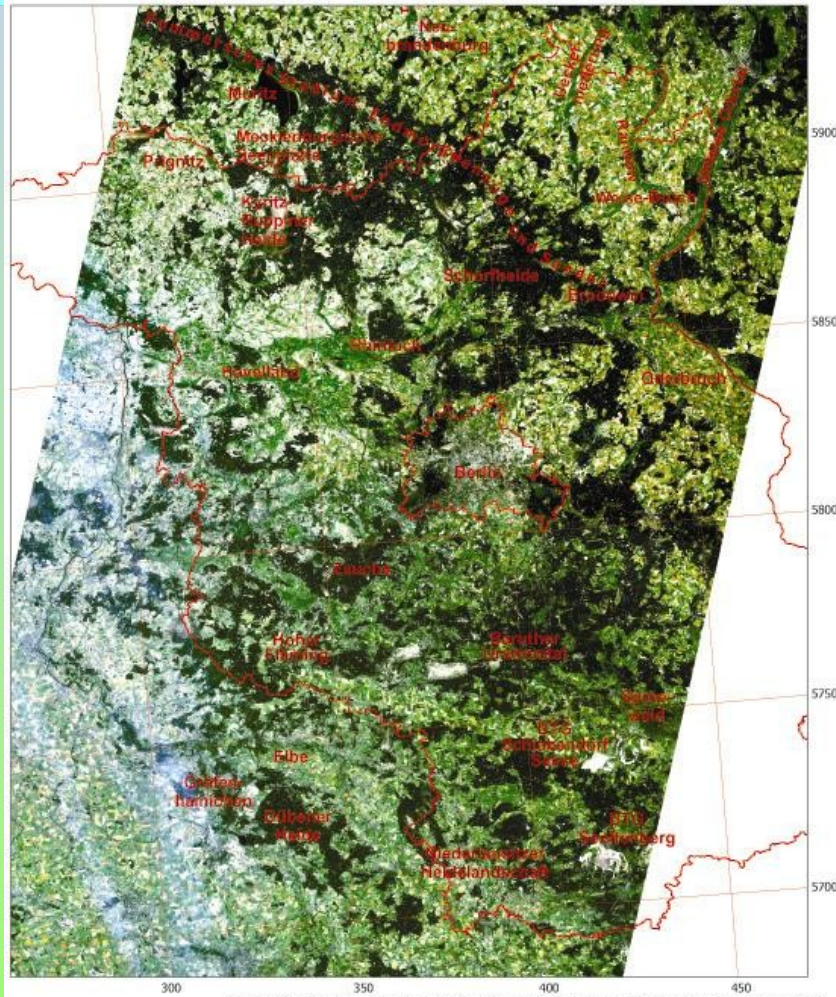


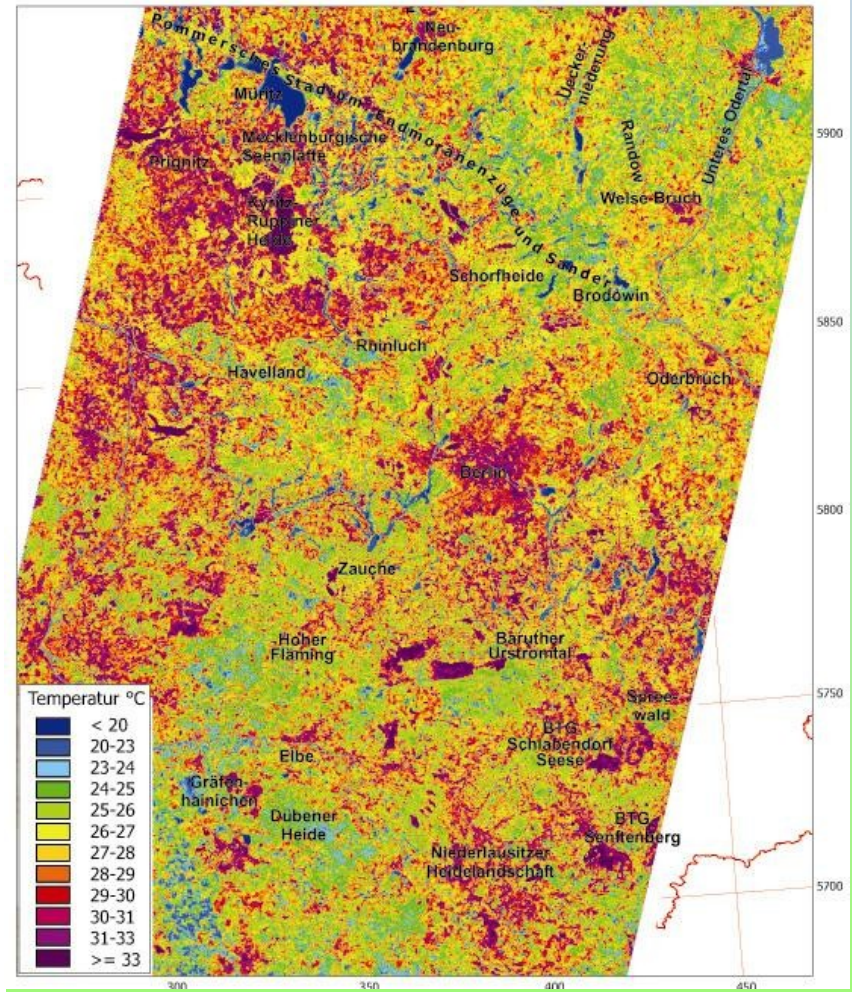
# Brandenburg RGB-Composit 07. Juli 1989

Landsat 5, Thematic Mapper, Kanal 1, 2, 3. Auflösung: 30 m

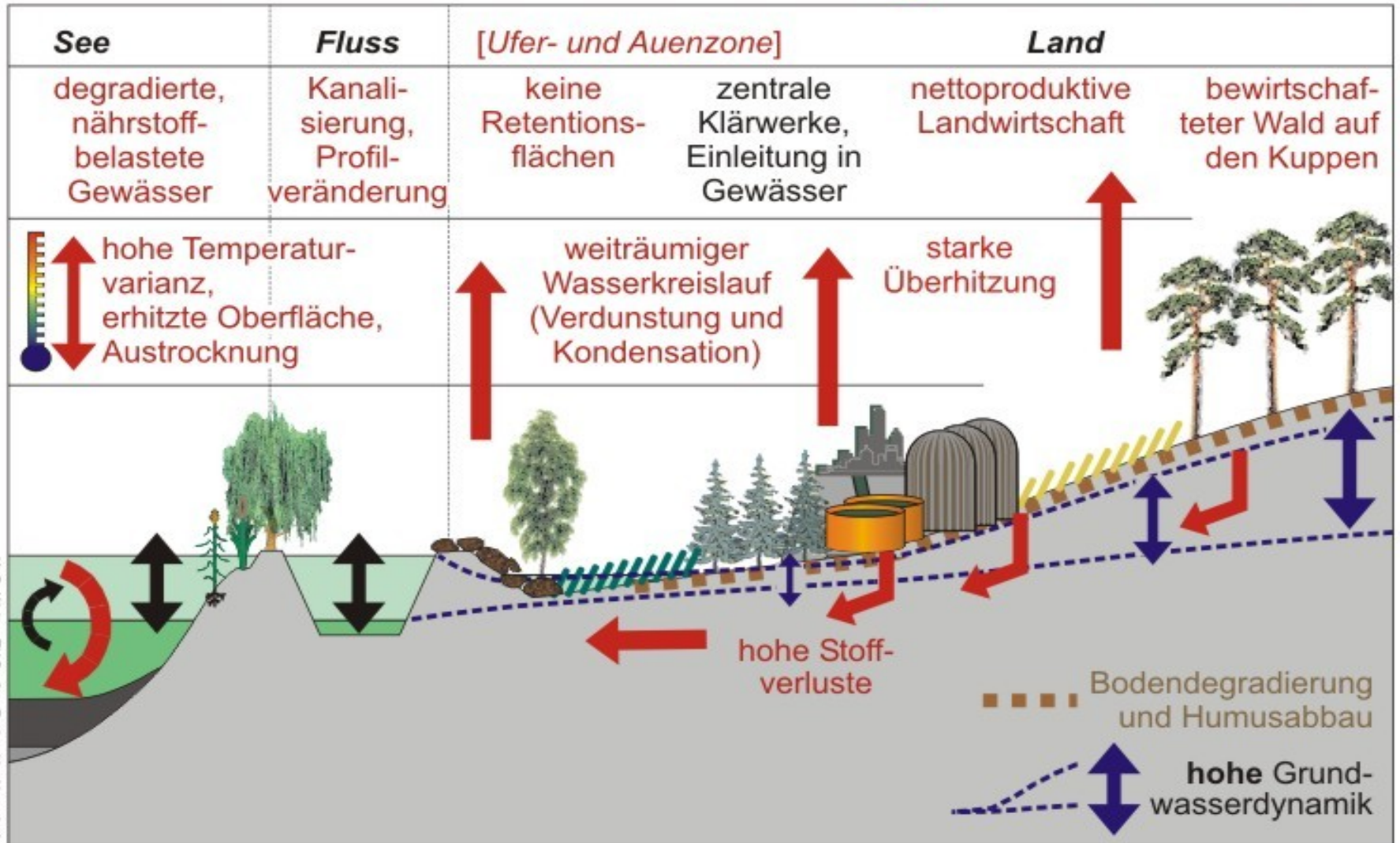


# Brandenburg Thermalbild 07. Juli 1989

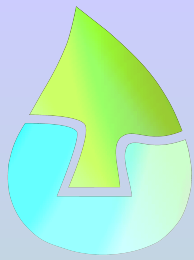
Landsat 5, Thematic Mapper, Kanal 6. Auflösung: 120 m



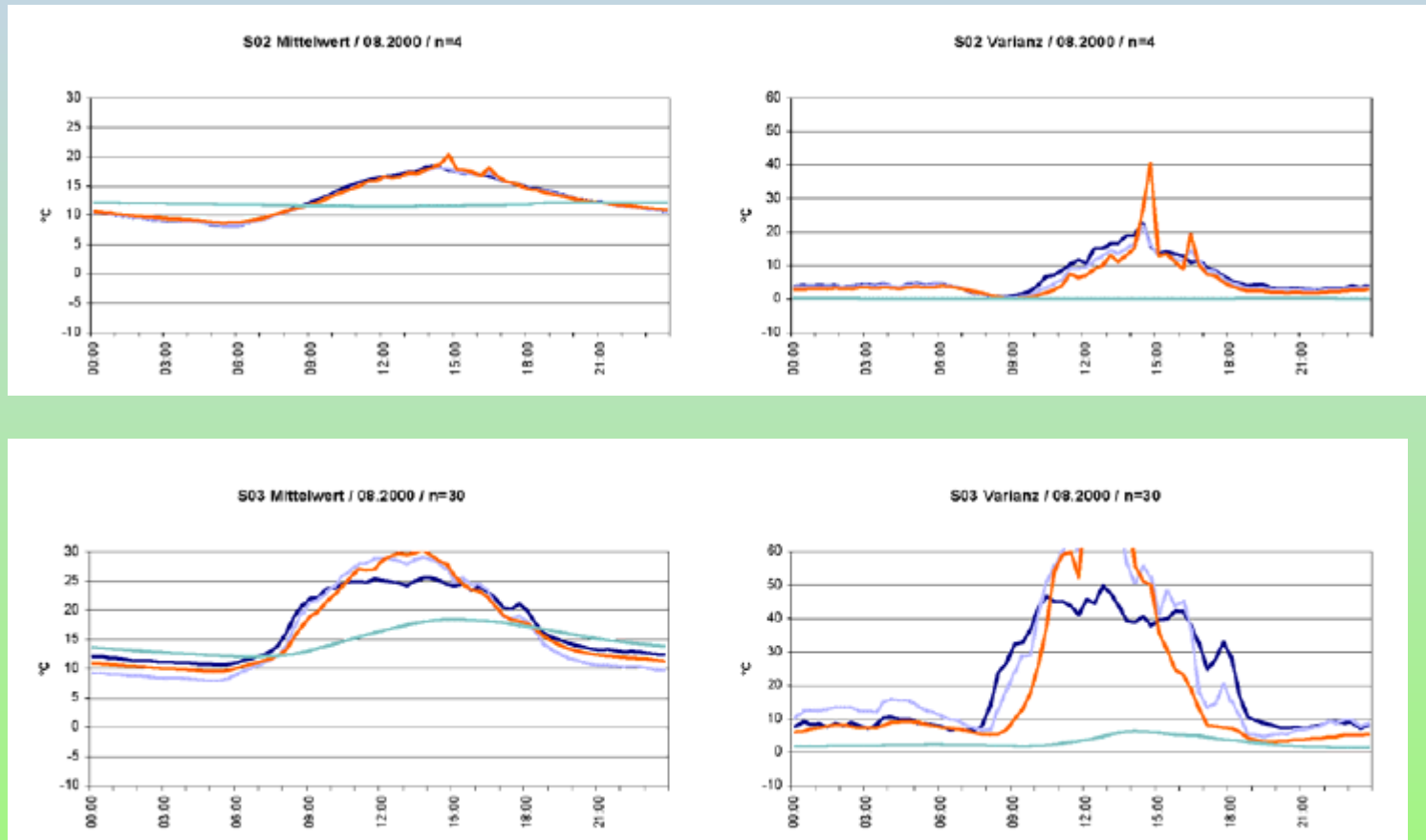
# Land - Wasser Ökotope (Flüsse und Seen) - *Degradation durch Menschen*

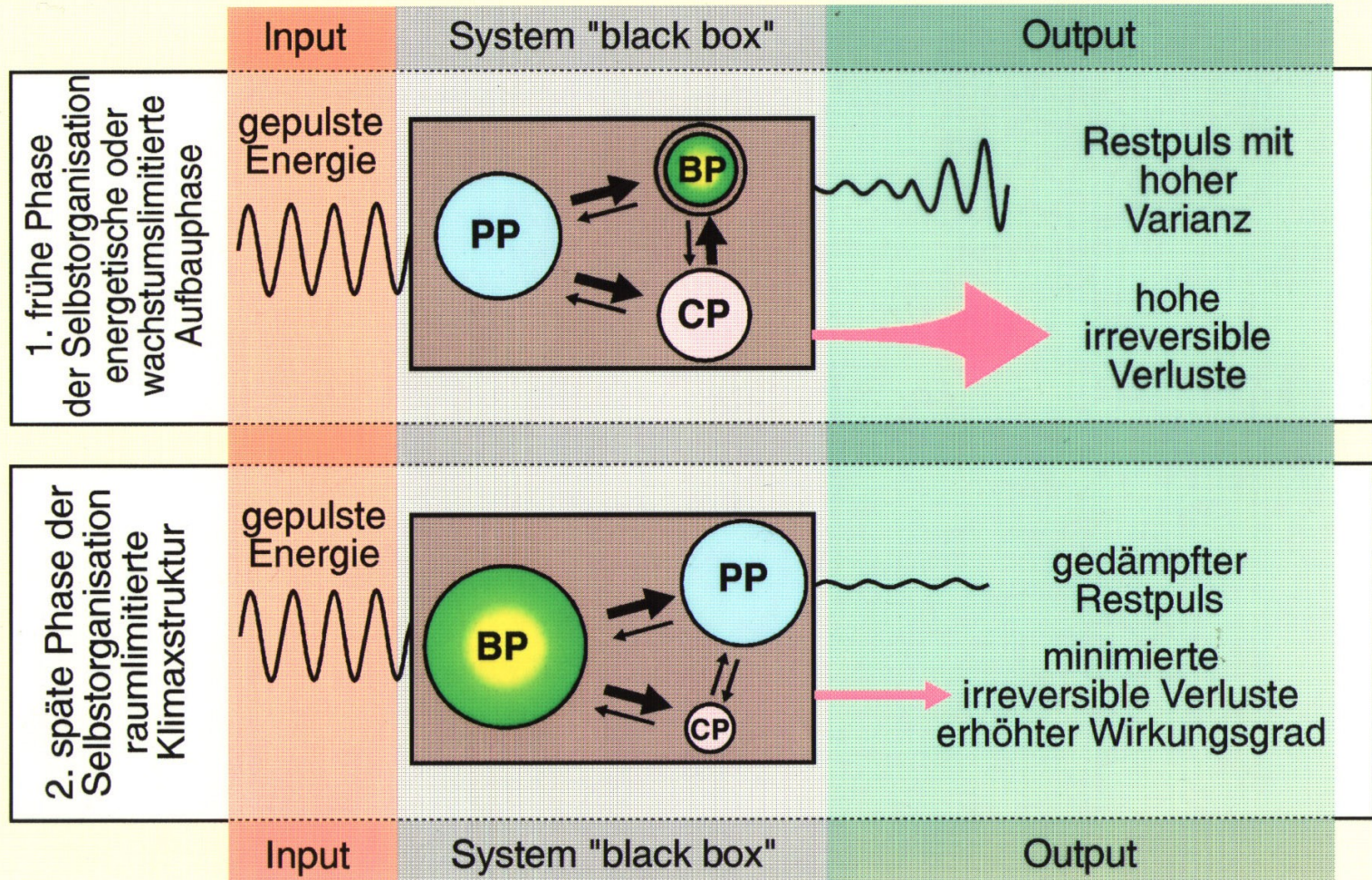
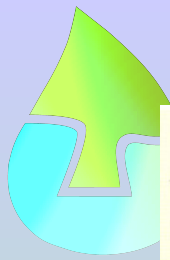


Source: Wolter & Ripl, unpubl.

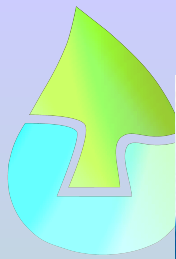


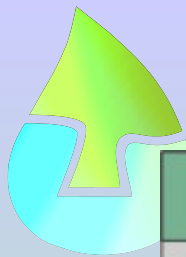
# Comparison Virgin forest and small meadow nearby





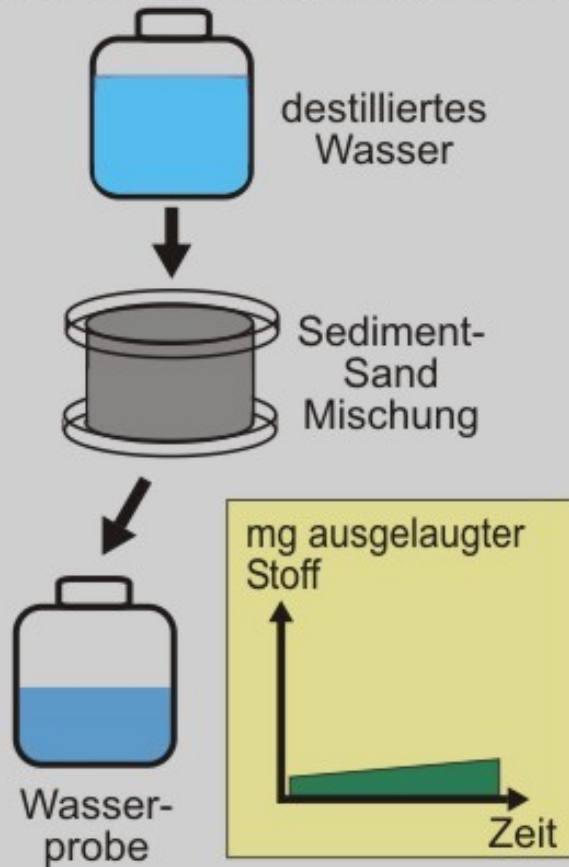
PP = physikal. Prozessor, CP = chemischer Prozessor, BP = biologischer Prozessor



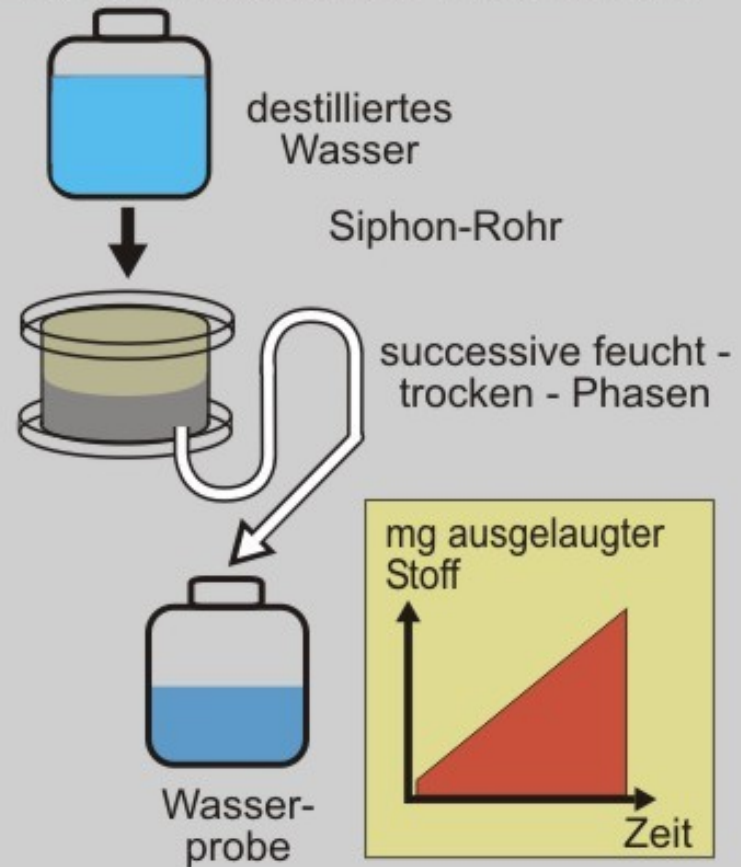


## Design für Auslaugungsexperiment

### 1. kontinuierlicher Wasserfluß



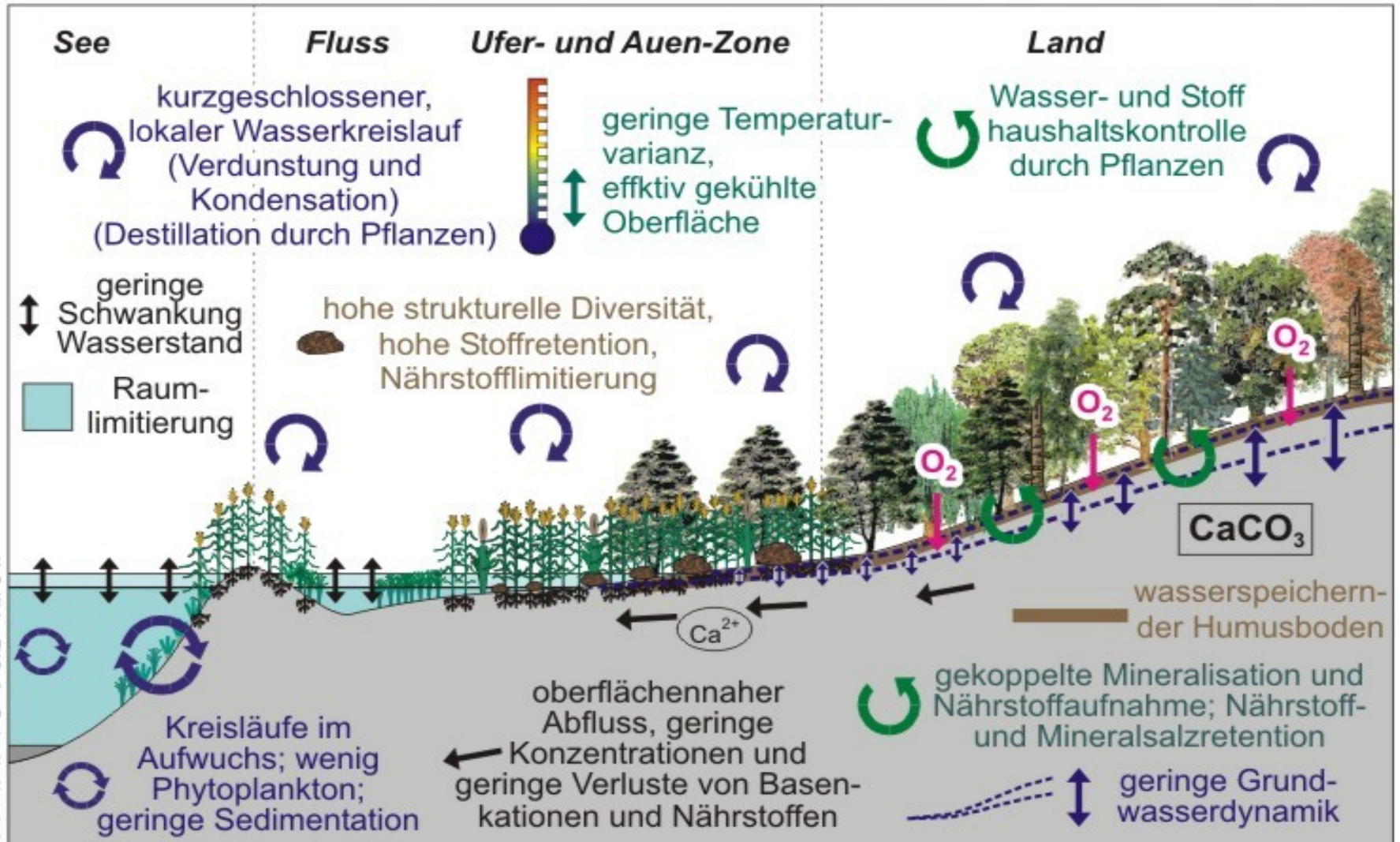
### 2. intermittierender Wasserfluß



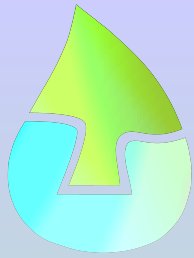
Quelle: Ripl pers. Mitt.

K-D Wolter, TUB - Limnologie, Leach\_e1.cdr, 11.12.00

# Land - Gewässer Ökotope (Flüsse und Seen) - *intakte Funktionalität*



K.-D. Wolter, TU Berlin - Fachgebiet Limnologie  
Landschaftsökologie, Land-Wasser, 01-d-cdr, 20.10.2002



# Zielsetzung: Nachhaltigkeit, "sustainable development"



K.-D. Wolter, TU Berlin - Limnologie  
Nachhalt: TAB\_WK-3Saeuen\_01.cdr, 04.09.2002, 11.07.2003

Sources: Ripl, Wolter and other