

1 **Title**

2 Pathophysiological analysis of uninephrectomized *db/db* mice as a model of severe
3 diabetic kidney disease.

4

5 Mariko Maekawa^{1),2)}, Tatsuya Maekawa¹⁾, Tomohiko Sasase¹⁾, Kayoko Takagi¹⁾, Satomi
6 Takeuchi¹⁾, Mari Kitamoto¹⁾, Tatsuro Nakagawa¹⁾, Kaoru Toyoda³⁾, Noriko Konishi¹⁾,
7 Takeshi Ohta⁴⁾, Takahisa Yamada²⁾

8

9 ¹⁾ *Biological/Pharmacological Research Laboratories, Central Pharmaceutical Research*
10 *Institute, Japan Tobacco Inc., Osaka, Japan*

11 ²⁾ *Graduate School of Science and Technology, Niigata University, Niigata, Japan*

12 ³⁾ *Toxicology Research Laboratories, Central Pharmaceutical Research Institute, Japan*
13 *Tobacco Inc., Kanagawa, Japan*

14 ⁴⁾ *Laboratory of Animal Physiology and Functional Anatomy, Graduate School of*
15 *Agriculture, Kyoto University, Kyoto, Japan*

16

17

18 **Full address of corresponding author**

19 Tatsuya Maekawa

20 Biological/Pharmacological Research Laboratories, Central Pharmaceutical Research
21 Institute, Japan Tobacco Inc., 1-1 Murasaki-cho, Takatsuki, Osaka 569-1125, Japan

22 Tel.: +81 72 681 9700

23 Fax: +81 72 681 9722

24 E-mail: tatsuya.maekawa@jt.com

25

26

27 **Short title**

28 Uninephrectomized *db/db* mice as a severe DKD model

29

1 **Summary**

2 Diabetic nephropathy, included in diabetic kidney disease (DKD), is the primary disease
3 leading to end-stage renal disease (ESRD) or dialysis treatment, accounting for more than
4 40% of all patients with ESRD or receiving dialysis. Developing new therapeutics to
5 prevent the transition to ESRD or dialysis treatment requires an understanding of the
6 pathophysiology of DKD and an appropriate animal model for drug efficacy studies. In
7 this study, we investigated the pathophysiology of diabetic kidney disease with type 2
8 diabetes in uninephrectomized *db/db* mice. In addition, the nephrectomized *db/db* mice
9 from 10 weeks to 42 weeks were used to assess the efficacy of long-term administration
10 of the angiotensin-II-receptor antagonist losartan. The blood and urinary biochemical
11 parameters, main pharmacological endpoint of the losartan therapy, were periodically
12 measured. And at the end, histopathological analysis was performed. Uninephrectomized
13 *db/db* mice clearly developed obesity and hyperglycemia from young age. Furthermore,
14 they showed renal pathophysiological changes, such as increased urinary albumin-
15 creatinine ratio (UACR) (the peak value 3104 ± 986 in 40-week-old mice), glomerular
16 hypertrophy and increased fibrotic areas in the tubulointerstitial tubules. The blood
17 pressure in the losartan group was significantly low compared to the normotensive
18 Vehicle group. However, as expected, Losartan suppressed the increase in UACR
19 (829 ± 500) indicating the medication was sufficient, but the histopathological
20 abnormalities including tubular interstitial fibrosis did not improve. These results suggest
21 that the uninephrectomized *db/db* mice are useful as an animal model of the severe DKD
22 indicated by the comparison of the efficacy of losartan in this model with the efficacy of
23 losartan in clinical practice.

24

25 **Keywords:** diabetic kidney disease, *db/db* mice, tubular interstitial fibrosis

26

27

1 **Introduction**

2 The incidence and prevalence of chronic kidney disease (CKD) are increasing
3 worldwide [1]. According to the US Renal Data System, about 30 million Americans were
4 afflicted by CKD in 2017, a prevalence of almost 15% [2-4]. In Japan, approximately
5 13% of the adult population, 13.3 million people are living with CKD [5]. The number of
6 patients on dialysis due to end-stage renal disease (ESRD) is increasing every year,
7 creating it a major economic burden in healthcare [6].

8 CKD is defined as any condition that causes abnormalities of kidney structure or
9 function for more than 3 months with notable implications for patient health [7,8].
10 Regardless of initial etiology, the common pathological features of CKD are fibrosis,
11 tubular atrophy, and interstitial inflammation. Kidney dysfunction has been shown to be
12 more correlated with tubular interstitial damage than glomerular damage, often associated
13 with the loss of peritubular capillaries, and it has been reported that hypoxia and other
14 factors are the final common mechanism of transition from CKD to ESRD [9,10].

15 Diabetic nephropathy, included in diabetic kidney disease (DKD), is the primary
16 disease leading to ESRD or dialysis treatment, accounting for more than 40% of all
17 patients with ESRD or receiving dialysis [5,11]. Lifestyle-related diseases and metabolic
18 syndrome are intimately linked to the development of CKD. Reports from
19 epidemiological studies in Japan have shown that there is an increase in the cumulative
20 incidence and relative risk of CKD in patients with metabolic syndrome [12]. Renal
21 damage due to obesity also involves insulin resistance; consequently insulin resistance
22 increase the likelihood of proteinuria [13,14]. In addition, as renal function declines,
23 insulin resistance rises, creating a vicious cycle.

24 Inhibiting the transition to ESRD would seem to be an important treatment strategy for

1 CKD, but there are not any drugs preventing effectively the CKD from development to
2 ESRD. In drug development, it is important to select appropriate animal models to
3 estimate the efficacy in humans. In addition, it is necessary to determine the relevance of
4 the various models to human pathology using those animal models to evaluate the efficacy
5 of a drug.

6 Various models of renal injury have been described, including chemical-induced
7 models such as the ones induced by Adriamycin [15] and Cisplatin [16] and surgical
8 models such as the ones induced by 5/6 nephrectomy [17] and Unilateral Ureter
9 Obstruction (UUO) [18]. However, in these animal models, disease progression begins
10 with an artificial insult causing a single cellular injury, which is different from the
11 complex pathogenesis of DKD in humans and is not accompanied by the background of
12 systemic metabolic abnormalities, such as obesity and insulin resistance, normally linked
13 to CKD progression. These models are useful for evaluating limited aspects of the
14 mechanism. On the other hand, when evaluating drugs for CKD, which has complex
15 characteristics, there may be gaps between drug efficacy estimated in existing animal
16 models and drug efficacy estimated in humans.

17 The *db/db* mouse is a type 2 diabetes model with a mutation in the leptin receptor gene
18 [19] and individuals have a background of overeating, obesity, and elevated levels of
19 blood glucose, urine glucose, and urine protein from a young age. Furthermore, the renal
20 damage worsens with age and the common pathological features of CKD such as
21 tubulointerstitial fibrosis can develop. Therefore, *db/db* mice may be an useful animal
22 model of CKD. Here, we removed one kidney of these *db/db* mice putting additional
23 stress on the other remaining kidney to determine whether these animals could be used as
24 a pathological model of severe DKD. It is also important that drugs used in clinical

1 practice in humans is comparable to the effects detected in mice. In this study, we
2 investigated the pharmacological effects of repeated administration with losartan in
3 uninephrectomized *db/db* mice.

1 **Methods**

2 *Animals and chemicals*

3 Male BKS.Cg-*+Lepr^{db}/+Lepr^{db}/Jcl* (*db/db*) and BKS.Cg-*m⁺/+Lepr^{db}/Jcl* (*db/m*) were
4 purchased from CLEA Japan, Inc. (Tokyo, Japan). All animal protocols complied with
5 the Laboratory Guidelines for Animal Experimentation of Japan Tobacco. Animals were
6 housed in a controlled room (temperature 23 ± 3 °C, humidity 55 ± 15 %, 12 h lighting
7 cycle) and allowed free access to diet and water.

8 At 7 weeks of age uninephrectomy (defined as 1K mice) was performed through a 1-
9 cm flank incision as previously described in *db/m* and *db/db* mice [20]. The kidneys in
10 other mice were left intact (defined as 2K mice).

11 *db/m* group (n = 6 from each group) , 2K *db/db* (n = 5) and 1K *db/db* (n = 4) a normal
12 powdered diet (CE-2) (Oriental Yeast; Tokyo, Japan) was fed, and the losartan group (n
13 = 4) was fed CE-2 supplemented with 0.04% (w/w) losartan potassium (LKT Laboratories
14 Inc.; St. Paul, MN, USA) from the age of 10 weeks.

15

16 *Body mass and biochemical parameters*

17 Body mass was monitored once every four weeks and the other parameters were
18 measured once every eight weeks until the animals were 42 weeks of age. Blood samples
19 were collected from the subclavian vein using a heparin-treated syringe. To collect urine
20 samples, mice were housed in metabolic cages. Glucose and urea nitrogen concentration
21 (BUN) levels were measured using commercial kits (Roche Diagnostics, Basel,
22 Switzerland) and an automatic analyzer (Hitachi 7180; Hitachi, Tokyo, Japan). Plasma
23 and urinary creatinine concentrations were measured by a High-Performance Liquid
24 Chromatography (HPLC) system (Waters Corporation; Milford, MA, USA). The urinary

1 albumin concentration was measured using the LBIS Mouse Albumin ELISA kit
2 (AKRAL-121, FUJIFILM Wako Shibayagi, Gunma, Japan) according to the
3 manufacturer's instructions. Urinary albumin-creatinine ratio (UACR) was calculated as
4 [urinary albumin ($\mu\text{g/ml}$)] divided by [urinary creatinine (mg/dl)]. Creatinine clearance
5 (Ccr, ml/min) and body mass corrected creatinine clearance (Ccr BM, ml/min/kg) were
6 calculated from plasma creatinine concentration (Pcr, mg/dl), urine creatinine
7 concentration (Ucr, mg/dl), urine volume (UV, ml/24 hr), and body mass (BM, g) using
8 the following equation:

$$9 \quad \text{Ccr (ml/min)} = \text{Ucr} \times \text{UV} / \text{Pcr}$$

$$10 \quad \text{Ccr BM (ml/min/kg)} = \text{Ccr} \times 1000 / \text{BM}$$

11

12 *Blood pressure and heart rate*

13 Systolic blood pressure (SBP) and heart rate (HR) were measured in mice at 36 weeks
14 of age using a non-invasive automatic blood pressure measurement device (BP-98A,
15 Softron Co., Ltd., Tokyo, Japan).

16

17 *Morphological analysis*

18 At 42 weeks of age, all mice were sacrificed under anesthesia and both kidneys were
19 dissected for subsequent analysis. The kidneys were weighed, fixed with 4%
20 paraformaldehyde, embedded in paraffin, sectioned, stained with hematoxylin and eosin
21 (HE), Schiff periodate (PAS), and Sirius red (SR), and examined using a light microscope
22 to visualize pathological change and evaluate the Sirius red-stained fibrotic areas. We
23 photographed three representative fields of the cortex, avoiding the glomeruli, examined
24 the fibrotic area in each field at $\times 200$ magnification, and quantified the fibrotic area in

1 each field using the image processing integration software inForm (PerkinElmer, Inc.,
2 Waltham, MA, USA). The fibrotic rate was calculated by dividing the area stained with
3 Sirius red by the total area. The mean value of fibrotic rate in the three fields was
4 calculated as the overall fibrosis rate.

5

6 *Statistical analysis*

7 All results are expressed as mean \pm standard deviation. Statistical analyses of
8 differences between groups were performed by a Student *t*-test or Aspin-Welch *t*-test. All
9 statistical analyses were performed using Statlight 2000 (Yukms Corp., Kawasaki, Japan)
10 statistical software. Differences were accepted as significant at $p < 0.05$.

11

1 **Results**

2 *Parameters of type 2 diabetes in db/db mice*

3 *db/db* mice demonstrated heavier body mass and higher blood glucose compared to
4 *db/m* mice (Fig. 1). Due to the effect of the operation, the body mass gain was moderate
5 in 1K *db/db* mice comparable to the 2K *db/db* mice. The body mass of 2K *db/db* peaked
6 at 16 weeks and decreased since then. At 42 weeks, the body mass of 2K *db/db* were
7 lighter than 2K *db/m*. Blood glucose was not affected by uninephrectomy throughout the
8 whole period, blood glucose in *db/db* mice was higher than that in *db/m* mice (Fig. 1B).

9
10 *Renal function parameters of type 2 diabetes in db/db mice*

11 In *db/db* mice compared with *db/m* mice, UACR increased significantly from 8 weeks
12 of age (Fig. 2A). The UACR of 1K *db/db* mice tend to increase from 16 weeks (9 weeks
13 postoperatively) 2 times higher than that of 2K *db/db* mice and at 40 weeks significant
14 increase was seen .

15 As for Ccr (Fig. 2B), the state of hyperfiltration continued after 16 weeks of age in
16 *db/db* mice. In 1K *db/db* mice compared with 2K *db/db* mice, there was a declining trend
17 in Ccr from 32 weeks of age.

18 BUN showed little change throughout the whole period (Fig. 2C). However, 1K *db/db*
19 mice showed an increasing trend between 32 and 40 weeks of age (2K *db/m* 20.4 ±
20 1.7 mg/dl, 1K *db/m* 29.1 ± 4.3 mg/dl, 2K *db/db* 24.3 ± 4.3 mg/dl, 1K *db/db* 46.6 ±
21 19.8 mg/dl at 40 weeks of age).

22 Kidney mass at 42 weeks of age was heavier in *db/db* mice than in *db/m* mice, and even
23 greater after uninephrectomy (Table 1).

24

1 *Kidney pathology of type 2 diabetes in db/db mice*

2 The histopathological changes of the kidney were examined by HE, PAS, and SR
3 staining in four groups of 42-week-old *db/m* mice and *db/db* mice is shown in Fig. 3A.
4 There were no changes suggestive of renal impairment in both the 2K and 1K groups of
5 *db/m* mice. In *db/db* mice, an increase in glomerular size, an increase in mesangial area,
6 and development of tubular lesions including tubular dilatation were observed and tend
7 to be more severe in 1K mice than 2K mice. In addition, glomerular sclerosis,
8 degeneration, and regeneration of tubular epithelial cells were also increased in 1K (data
9 not shown).

10 Fibrosis was quantified using the area stained with Sirius Red as an index, and the
11 results of positive area evaluation of Sirius Red staining are shown in Fig. 3B. The Sirius
12 Red positive area tended to be larger in *db/db* mice than in *db/m* mice and expanded more
13 in 1K mice than in 2K mice (2K *db/m* $0.8 \pm 0.6\%$, 1K *db/m* $1.9 \pm 1.8\%$, 2K *db/db* $3.6 \pm$
14 2.5% , 1K *db/db* $7.6 \pm 9.8\%$).

15
16 *Effect of losartan on type 2 diabetes in uninephrectomised db/db mice*

17 Blood pressure, the main pharmacological endpoint of losartan, and heart rate were
18 assessed (Table 2). In the 2K *db/db* group, blood pressure was significantly lower than in
19 the 2K *db/m* group and was unaffected by removing one kidney. In 1K *db/db* mice,
20 losartan (compared with vehicle) significantly lowered systolic blood pressure. Heart rate
21 was lower in *db/db* mice compared with *db/m* mice, but was unaffected by
22 uninephrectomy and losartan treatment.

23 On the renal function endpoint, losartan significantly reduced the UACR, but not Ccr
24 in 40-week-old 1K *db/db* mice, and the pathology of both glomerular and tubular

1 specimens was similar to that in the vehicle group (data not shown).

2 The tubulointerstitial fibrosis observed in the losartan group was similar to that
3 observed in the vehicle group. The quantification of the fibrosis area showed that fibrosis
4 tended to decrease with losartan administration, but was not significantly different
5 between the groups (vehicle $7.6 \pm 9.8\%$, losartan $5.2 \pm 1.1\%$).

6

1 **Discussion**

2 Clinically, DKD is a kidney disease caused by diabetes mellitus and is characterized
3 by increased urinary protein excretion. Moreover, in severe DKD, glomerular filtration
4 rate is decreased and pathological fibrosis of tubulointerstitium is also observed [10]. The
5 *db/db* mice with a diabetic background, and the removal of one of their kidneys resulted
6 in changes similar to those seen in human DKD, such as increased urinary protein
7 excretion, a decreased creatinine clearance, an indicator of glomerular filtration rate, and
8 fibrosis of tubular interstitium. Thus, the uninephrectomized *db/db* mice may mimic the
9 condition of severe DKD.

10 In this study, we focused on interstitial fibrosis and renal biomarkers using creatinine
11 clearance and BUN to evaluate the severity of renal disease. The presence of renal
12 tubulointerstitial fibrosis in a final common pathway [10], which is commonly observed
13 regardless of the primary disease, and considered to be an indicator of the severity of the
14 disease.

15 Previously, we looked for increased interstitial fibrosis and decreased creatinine
16 clearance in *db/db* intact mice up to 42 weeks of age but found no evidence of either
17 change (data not shown). Therefore, unilateral nephrectomy was performed to further
18 exacerbate the renal damage, and the pathological changes over time were evaluated.

19 In the present study, urinary albumin excretion and UACR increased with age in 2K
20 *db/db* mice compared to 2K *db/m* mice, suggesting the development of renal lesions.
21 Histopathologically, glomerular hypertrophy, an increase in mesangial matrix, and
22 development of tubular lesions including dilatation were observed. However, no
23 tubulointerstitial fibrosis nor a decrease in Ccr, an index of glomerular filtration function,
24 was found as in previous studies. In addition, the mass of 2K *db/db* mice was lighter than

1 2K *db/m* mice at 42 weeks. We consider that mass reduction of 2K *db/db* mice is due to
2 a decrease of glucose utilization by insulin deficiency. Dalbøge et al. [21] reported that
3 plasma insulin and C-peptide concentrations increased up to 10 weeks, whereafter they
4 declined until 34 weeks of age. They hypothesized that this due to a low beta cell
5 proliferation and as a result, in their 2K *db/db* mice developed glucose intolerance and
6 their body mass significantly decreased. Remarkably, similar to Dalbøge et al.'s
7 observations, in one of our 2K *db/db* mice also became obese at the start, but the mass
8 rapidly declined after 30 weeks.

9 On the other hand, in 1K *db/db* mice, urinary albumin excretion and UACR were
10 further increased beyond their levels compared to 2K *db/db* mice. As the creatinine
11 clearance findings show, total renal glomerular filtration rate is decreased by uni-
12 nephrectomy. Therefore, it is thought that albumin excretion and UACR was decreased
13 in 1K *db/m* compared to 2K *db/m*. On the other hand, *db/db* mice were hyperglycemic
14 and reached a hyperfiltration state to excrete glucose [22]. It is considered that the
15 enhanced glucose excretion mechanism associated with hyperglycemia exceeding the
16 reduction in filtration rate due to nephrectomy. The pathological findings in 1K *db/db*
17 showed not only a tendency toward aggravation of the above glomerular damage, but also
18 an expansion of Sirius Red-stained tubulointerstitial area, suggesting accelerated fibrosis
19 of the tubules. Accelerated renal lesion development in unilaterally nephrectomized mice
20 suggest that unilateral nephrectomy accelerated the development of renal lesions, as in
21 previous studies [20]. Furthermore, it is considered that we were able to evaluate the
22 severe pathology by extending the observation period where the level of Ccr and BUN
23 changed. There was a downward trend in Ccr after 32 weeks of age, suggesting a decline
24 in renal function due to a decrease in glomerular filtration rate. Creatinine is used as a

1 tracer because creatinine is not absorbed from the tubules and secreted creatinine accounts
2 for only about 10-20% of urinary creatinine excretion in humans. In mice, on the other
3 hand, about 35-50% of creatinine excreted is secreted from the tubules [23]. Therefore,
4 the amount of creatinine in the urine of mice is more compared to the amount of creatinine
5 in the urine of humans. In other words, Ccr is considered less likely to decrease in mice
6 than in humans. However, the fact that Ccr levels tended to decrease in mice suggest that
7 the renal function of both glomeruli and tubules had deteriorated considerably. BUN
8 levels also changed after 32 weeks of age, as well as in Ccr levels. In *db/db* mice where
9 polyuria develops due to diabetes, increased excretion lowers BUN, making it difficult to
10 observe an increase in BUN due to decreased renal function. Nevertheless, an increase of
11 BUN was observed at the same time as Ccr decreased [24]. These results suggest that in
12 addition to pathological changes in the kidney, the reabsorption mechanism is beginning
13 to malfunction. The pathological features of CKD, such as fibrosis, tubular atrophy, and
14 interstitial inflammation, were observed regardless of the initial etiology, and suggested
15 that the disease was similar to severe DKD.

16 Using this model, we evaluated the effect of losartan, which is clinically used for the
17 treatment of hypertension and proteinuria in type 2 diabetic nephropathy. First, we
18 examined the effect of losartan on blood pressure. The blood pressure was significantly
19 lower in 2K *db/db* mice than in 2K *db/m* mice. Although no effect of unilateral
20 nephrectomy on blood pressure was observed, losartan administration had the effect of
21 adequately lowering blood pressure. Therefore, the exposure of losartan in this study was
22 sufficient to show a drug effect. Blood pressure in 2K *db/db* was significantly reduced,
23 compared with 2K *db/m*. The tendency of low blood pressure in *db/db* was confirmed in
24 our previous study as well. Simonds et al. [25] reported blockade of leptin signaling

1 reduces blood pressure in obese mice, although they did not report a clear hypotensive
2 effect in *db/db*, suggesting that this may be a protective response to obesity hypertension.
3 Next, we examined the effect of losartan on the kidneys. Compared to the vehicle group,
4 the losartan group showed a significantly reduced UACR from the start of treatment to
5 the end of the study. Creatinine clearance and BUN also showed tendency to delay the
6 progression of the disease but without apparent pathological effect on either glomeruli or
7 tubules. Fibrosis in the tubular interstitium was evaluated based on the positive area of
8 Sirius red staining, but no significant decrease was observed. The effect of losartan on
9 glomerular efflux was thought to be due to the reduction of tubular burden associated with
10 the suppression of proteinuria in the early stages of CKD. Losartan may reduce the burden
11 and inhibit disease progression by decreasing intraglomerular pressure and glomerular
12 filtration rate in the early stages of CKD. One of the reasons for reducing the burden was
13 thought to be the reduction of reactive oxygen species (ROS) by decreasing the amount
14 of reabsorption in the proximal tubules. Sustained hyperglycemia, together with increased
15 blood levels of fatty acids, induce oxidative and inflammatory stress, which is largely
16 associated with a progressive renal failure in type 2 diabetes [26]. Fatty acids and other
17 ligands bound to albumin are known to induce the production of ROS that impair
18 proximal tubule function [27]. Enhanced oxidative stress may transform tubular epithelial
19 cells into α SMA-positive myofibroblasts [28]. Another report that evaluated losartan's
20 effect on renal fibrosis progression in a non-clinical animal model (the UUO rat model)
21 showed efficacy in inhibiting renal fibrosis and apoptosis via phosphorylation of STAT3
22 [29]. Losartan alleviates renal fibrosis and inhibits endothelial-mesenchymal transition
23 under high-fat diet-induced hyperglycemic conditions [30]. However, both of these
24 structural changes were only partially inhibited. In a clinical study, a follow-up study of

1 the long-term effects of losartan on kidney disease in American Indians with type 2
2 diabetic diabetes, long-term risk of glomerular filtration rate (GFR) decline was not
3 significantly different between persons randomized to early treatment with losartan and
4 those randomized to placebo [31]. It was reported to have an inhibitory effect on the
5 excretion of albuminuria but not on GFR, suggesting limited structural changes [32]. It is
6 speculated that the lack of clinical efficacy of losartan is probably due to the lack of
7 histological improvement. In this study, the suppression of albuminuria excretion by
8 losartan medication from an early stage of DKD may have tended to decrease fibrosis in
9 the tubulointerstitium, but there was no direct effect. In the uni-nephrectomized *db/db*
10 mice used in this study, long-term treatment with losartan showed a suppression of
11 albuminuria excretion but did not achieve sufficient histological effects in the kidney,
12 indicated the efficacy of losartan in this model and thus the efficacy of losartan in clinical
13 DKD patients. In the future, it will be essential to use this model to evaluate the
14 pharmacological effects of SGLT2 inhibitors for CKD in clinical practice.

15 In summary, we found a trend toward increased tubulointerstitial fibrosis and decreased
16 creatinine clearance in older 1K *db/db* mice. However, losartan treatment exhibited only a
17 partial effect in this model. In the future, it is expected that drugs that could directly
18 improve glomerular filtration rate and inhibit tubulointerstitial fibrosis will be developed.
19 For the development of such drugs, uninephrectomized *db/db* mice, as an animal model
20 of severe DKD, may be efficient to evaluate the drug.

21

22

23 **Conflict of Interest**

24 M.Maekawa, T.Maekawa, Sasase, Takagi, Takeuchi, Kitamoto, Nakagawa, Toyoda and

1 Konishi are employees of Japan Tobacco Inc.

2

3 **References**

4

5 1. Coresh J. Update on the Burden of CKD. *J Am Soc Nephrol* 2017;28:1020-1022.

6 <https://doi.org/10.1681/ASN.2016121374>

7 2. Saran R, Robinson B, Abbott KC, Agodoa LYC, Bhave N, Bragg-Gresham J,

8 Balkrishnan R, Dietrich X, Eckard A, Eggers PW, Gaipov A, Gillen D, Gipson D,

9 Hailpern SM, Hall YN, Han Y, He K, Herman W, Heung M, Hirth RA, Hutton D,

10 Jacobsen SJ, Jin Y, Kalantar-Zadeh K, Kapke A, Kovesdy CP, Lavalley D, Leslie

11 J, McCullough K, Modi Z, Molnar MZ, Montez-Rath M, Moradi H, Morgenstern

12 H, Mukhopadhyay P, Nallamothu B, Nguyen DV, Norris KC, O'Hare AM, Obi Y,

13 Park C, Pearson J, Pisoni R, Potukuchi PK, Rao P, Repeck K, Rhee CM, Schragger

14 J, Schaubel DE, Selewski DT, Shaw SF, Shi JM, Shieu M, Sim JJ, Soohoo M,

15 Steffick D, Streja E, Sumida K, Tamura MK, Tilea A, Tong L, Wang D, Wang M,

16 Woodside KJ, Xin X, Yin M, You AS, Zhou H, Shahinian V. *US Renal Data*

17 *System 2017 Annual Data Report: Epidemiology of Kidney Disease in the United*

18 *States. Am J Kidney Dis* 2018;71:A7. <https://doi.org/10.1053/j.ajkd.2018.01.002>

19 3. Saran R, Robinson B, Abbott KC, Agodoa LYC, Bragg-Gresham J, Balkrishnan

20 R, Bhave N, Dietrich X, Ding Z, Eggers PW, Gaipov A, Gillen D, Gipson D, Gu

21 H, Guro P, Haggerty D, Han Y, He K, Herman W, Heung M, Hirth RA, Hsiung JT,

22 Hutton D, Inoue A, Jacobsen SJ, Jin Y, Kalantar-Zadeh K, Kapke A, Kleine CE,

23 Kovesdy CP, Krueter W, Kurtz V, Li Y, Liu S, Marroquin MV, McCullough K,

24 Molnar MZ, Modi Z, Montez-Rath M, Moradi H, Morgenstern H, Mukhopadhyay

- 1 P, Nallamothu B, Nguyen DV, Norris KC, O'Hare AM, Obi Y, Park C, Pearson J,
2 Pisoni R, Potukuchi PK, Repeck K, Rhee CM, Schaubel DE, Schragger J, Selewski
3 DT, Shamraj R, Shaw SF, Shi JM, Shieu M, Sim JJ, Soohoo M, Steffick D, Streja
4 E, Sumida K, Kurella Tamura M, Tilea A, Turf M, Wang D, Weng W, Woodside
5 KJ, Wyncott A, Xiang J, Xin X, Yin M, You AS, Zhang X, Zhou H, Shahinian V.
6 US Renal Data System 2018 Annual Data Report: Epidemiology of Kidney
7 Disease in the United States. *Am J Kidney Dis* 2019;73:A7-A8.
8 <https://doi.org/10.1053/j.ajkd.2019.01.001>
- 9 4. Andrade-Oliveira V, Foresto-Neto O, Watanabe IKM, Zatz R, Camara NOS.
10 Inflammation in Renal Diseases: New and Old Players. *Front Pharmacol*
11 2019;10:1192. <https://doi.org/10.3389/fphar.2019.01192>
- 12 5. Japanese Society of Nephrology: Clinical Practice Guidebook for Diagnosis and
13 Treatment of Chronic Kidney Disease 2012. Tokyo Igakusha. Tokyo, 2012.
- 14 6. Sato Y, Yanagita M. Functional heterogeneity of resident fibroblasts in the kidney.
15 *Proc Jpn Acad Ser B Phys Biol Sci* 2019;95:468-478.
16 <https://doi.org/10.2183/pjab.95.033>
- 17 7. National Kidney F. K/DOQI clinical practice guidelines for chronic kidney
18 disease: evaluation, classification, and stratification. *Am J Kidney Dis*
19 2002;39:S1-266
- 20 8. Andrassy KM. Comments on 'KDIGO 2012 Clinical Practice Guideline for the
21 Evaluation and Management of Chronic Kidney Disease'. *Kidney Int*
22 2013;84:622-623. <https://doi.org/10.1038/ki.2013.243>
- 23 9. Bohle A, von Gise H, Mackensen-Haen S, Stark-Jakob B. The obliteration of the
24 postglomerular capillaries and its influence upon the function of both glomeruli

- 1 and tubuli. Functional interpretation of morphologic findings. *Klin Wochenschr*
2 1981;59:1043-1051. <https://doi.org/10.1007/BF01747747>
- 3 10. Yamaguchi J, Tanaka T, Nangaku M. Recent advances in understanding of chronic
4 kidney disease. *F1000Res* 2015;4. <https://doi.org/10.12688/f1000research.6970.1>
- 5 11. Nitta K, Abe M, Masakane I, Hanafusa N, Taniguchi M, Hasegawa T, Nakai S,
6 Wada A, Hamano T, Hoshino J, Joki N, Goto S, Wakasugi M, Yamamoto K,
7 Nakamoto H, Maeno K, Kawata T, Oyama C, Seino K, Sato T, Sato S, Ito M,
8 Kazama J, Ueda A, Saito O, Ando T, Ogawa T, Kumagai H, Terawaki H, Ando R,
9 Abe M, Kashiwagi T, Hamada C, Shibagaki Y, Hirawa N, Shimada H, Ishida Y,
10 Yokoyama H, Miyazaki R, Fukasawa M, Kamijyo Y, Matsuoka T, Kato A, Mori
11 N, Ito Y, Kasuga H, Koyabu S, Arimura T, Hashimoto T, Inaba M, Hayashi T,
12 Yamakawa T, Nishi S, Fujimori A, Yoneda T, Negi S, Nakaoka A, Ito T, Sugiyama
13 H, Masaki T, Nitta Y, Okada K, Yamanaka M, Kan M, Ota K, Tamura M, Mitsuiki
14 K, Ikeda Y, Nishikido M, Miyata A, Tomo T, Fujimoto S, Nosaki T, Oshiro Y, on
15 behalf of the Japanese Society for Dialysis Therapy Renal Data Registry C.
16 Annual dialysis data report 2018, JSDT Renal Data Registry: dialysis fluid quality,
17 hemodialysis and hemodiafiltration, peritoneal dialysis, and diabetes. *Renal
18 Replacement Therapy* 2020;6:51. <https://doi.org/10.1186/s41100-020-00290-z>
- 19 12. Ninomiya T, Kiyohara Y, Kubo M, Yonemoto K, Tanizaki Y, Doi Y, Hirakata H,
20 Iida M. Metabolic syndrome and CKD in a general Japanese population: the
21 Hisayama Study. *Am J Kidney Dis* 2006;48:383-391.
22 <https://doi.org/10.1053/j.ajkd.2006.06.003>
- 23 13. Zhang X, Lerman LO. The metabolic syndrome and chronic kidney disease.
24 *Transl Res* 2017;183:14-25. <https://doi.org/10.1016/j.trsl.2016.12.004>

- 1 14. Kim Y, Park CW. Mechanisms of Adiponectin Action: Implication of Adiponectin
2 Receptor Agonism in Diabetic Kidney Disease. *Int J Mol Sci* 2019;20:1782.
3 <https://doi.org/10.3390/ijms20071782>
- 4 15. Wang YM, Wang Y, Harris DCH, Alexander SI, Lee VWS. Adriamycin
5 nephropathy in BALB/c mice. *Curr Protoc Immunol* 2015;108:15.28.1-15.28.6.
6 <https://doi.org/10.1002/0471142735.im1528s108>
- 7 16. Perse M, Veceric-Haler Z. Cisplatin-Induced Rodent Model of Kidney Injury:
8 Characteristics and Challenges. *Biomed Res Int* 2018;2018:1462802.
9 <https://doi.org/10.1155/2018/1462802>
- 10 17. Kujal P, Vernerova Z. [5/6 nephrectomy as an experimental model of chronic renal
11 failure and adaptation to reduced nephron number]. *Cesk Fysiol* 2008;57:104-109
- 12 18. Dendooven A, Ishola DA, Jr., Nguyen TQ, Van der Giezen DM, Kok RJ,
13 Goldschmeding R, Joles JA. Oxidative stress in obstructive nephropathy. *Int J Exp*
14 *Pathol* 2011;92:202-210. <https://doi.org/10.1111/j.1365-2613.2010.00730.x>
- 15 19. Sharma K, McCue P, Dunn SR. Diabetic kidney disease in the db/db mouse. *Am*
16 *J Physiol Renal Physiol* 2003;284:F1138-1144.
17 <https://doi.org/10.1152/ajprenal.00315.2002>
- 18 20. Ninichuk V, Kulkarni O, Clauss S, Anders H. Tubular atrophy, interstitial fibrosis,
19 and inflammation in type 2 diabetic db/db mice. An accelerated model of
20 advanced diabetic nephropathy. *Eur J Med Res* 2007;12:351-355
- 21 21. Dalbøge LS, Almholt DL, Neerup TS, Vassiliadis E, Vrang N, Pedersen L,
22 Fosgerau K, Jelsing J. Characterisation of age-dependent beta cell dynamics in
23 the male db/db mice. *PLoS One* 2013;8:e82813.
24 <https://doi.org/10.1371/journal.pone.0082813>

- 1 22. Trevisan R, Dodesini AR. The Hyperfiltering Kidney in Diabetes. *Nephron*
2 2017;136:277-280. <https://doi.org/10.1159/000448183>
- 3 23. Breyer MD, Qi Z. Better nephrology for mice--and man. *Kidney Int* 2010;77:487-
4 489. <https://doi.org/10.1038/ki.2009.544>
- 5 24. Barsanti JA: Urinary Disorders. In: *Small Animal Clinical Diagnosis by*
6 *Laboratory Methods*. M Willard, H Tvedten (eds), Saunders, Philadelphia, PA,
7 U.S.A., 2012, pp 126-155.
- 8 25. Simonds SE, Pryor JT, Ravussin E, Greenway FL, Dileone R, Allen AM, Bassi J,
9 Elmquist JK, Keogh JM, Henning E, Myers MG, Jr., Licinio J, Brown RD, Enriori
10 PJ, O'Rahilly S, Sternson SM, Grove KL, Spanswick DC, Farooqi IS, Cowley MA.
11 Leptin mediates the increase in blood pressure associated with obesity. *Cell*
12 2014;159:1404-1416. <https://doi.org/10.1016/j.cell.2014.10.058>
- 13 26. Hirsch GE, Heck TG. Inflammation, oxidative stress and altered heat shock
14 response in type 2 diabetes: the basis for new pharmacological and non-
15 pharmacological interventions. *Arch Physiol Biochem* 2019:1-15.
16 <https://doi.org/10.1080/13813455.2019.1687522>
- 17 27. Long KR, Rbaibi Y, Gliozzi ML, Ren Q, Weisz OA. Differential kidney proximal
18 tubule cell responses to protein overload by albumin and its ligands. *Am J Physiol*
19 *Renal Physiol* 2020;318:F851-F859. <https://doi.org/10.1152/ajprenal.00490.2019>
- 20 28. Sato Y, Yanagita M. [Current concept in renal fibrosis]. *Nihon Jinzo Gakkai Shi*
21 2015;57:1187-1192
- 22 29. He P, Li D, Zhang B. Losartan attenuates renal interstitial fibrosis and tubular cell
23 apoptosis in a rat model of obstructive nephropathy. *Mol Med Rep* 2014;10:638-
24 644. <https://doi.org/10.3892/mmr.2014.2304>

- 1 30. Yao Y, Li Y, Zeng X, Ye Z, Li X, Zhang L. Losartan Alleviates Renal Fibrosis and
2 Inhibits Endothelial-to-Mesenchymal Transition (EMT) Under High-Fat Diet-
3 Induced Hyperglycemia. *Front Pharmacol* 2018;9:1213.
4 <https://doi.org/10.3389/fphar.2018.01213>
- 5 31. Tanamas SK, Saulnier PJ, Fufaa GD, Wheelock KM, Weil EJ, Hanson RL,
6 Knowler WC, Bennett PH, Nelson RG. Long-term Effect of Losartan on Kidney
7 Disease in American Indians With Type 2 Diabetes: A Follow-up Analysis of a
8 Randomized Clinical Trial. *Diabetes Care* 2016;39:2004-2010.
9 <https://doi.org/10.2337/dc16-0795>
- 10 32. Looker HC, Mauer M, Saulnier PJ, Harder JL, Nair V, Boustany-Kari CM,
11 Guarnieri P, Hill J, Esplin CA, Kretzler M, Nelson RG, Najafian B. Changes in
12 Albuminuria But Not GFR are Associated with Early Changes in Kidney Structure
13 in Type 2 Diabetes. *J Am Soc Nephrol* 2019;30:1049-1059.
14 <https://doi.org/10.1681/ASN.2018111166>

15

Tables

Table 1 Kidney mass in *db/m* and *db/db* mice

| | 2K <i>db/m</i> | 1K <i>db/m</i> | 2K <i>db/db</i> | 1K <i>db/db</i> |
|--|----------------|----------------|--------------------------|-----------------|
| Body mass (g) | 33.5 ± 2.8 | 34.1 ± 1.8 | 30.8 ± 4.6 | 39.3 ± 9.9 |
| Kidney mass (right) (mg) | 286 ± 19 | 455 ± 41** | 382 ± 36 ^{##} | 518 ± 174 |
| Kidney mass (right) (mg/100 g body mass) | 866 ± 83 | 1335 ± 107** | 1235 ± 177 ^{##} | 1326 ± 372 |

Body mass and kidney mass in *db/m* and *db/db* mice were measured at 42 weeks of age. Each value is a mean ± standard deviation

(*n*=3–6). ^{##} *p*<0.01; significantly different from *db/m* group. ** *p*<0.01; significantly different from 2K group.

Table 2 Blood pressure, biochemical tests of urine and blood and histology result in *db/m* and *db/db* mice

| | 2K <i>db/m</i> | 1K <i>db/m</i> | 2K <i>db/db</i> | 1K <i>db/db</i> Vehicle | 1K <i>db/db</i> Losartan |
|--------------------------------|----------------|--------------------------|------------------------|----------------------------|-----------------------------|
| Systolic blood pressure (mmHg) | 134 ± 6 | 130 ± 8 | 118 ± 13 [#] | 125 ± 9 | 90 ± 12 ^{††} |
| Heart rate (bpm) | 648 ± 61 | 656 ± 37 | 572 ± 53 | 582 ± 53 | 575 ± 59 |
| UACR | 107 ± 67 | 34 ± 7 [*] | 594 ± 247 [#] | 3104 ± 986 [*] | 829 ± 500 [†] |
| Ccr BM (ml/min/kg) | 20.9 ± 4.6 | 16.9 ± 4.2 | 43.8 ± 22.2 | 20.6 ± 7.6 | 27.7 ± 17.1 |
| BUN (mg/dl) | 20.4 ± 1.7 | 29.1 ± 4.3 ^{**} | 24.3 ± 4.3 | 46.6 ± 19.8 | 32.6 ± 1.8 |
| Sirius red Positive area (%) | 0.82 ± 0.62 | 1.88 ± 1.75 | 3.63 ± 2.45 | 6.54 ± 8.24 | 5.15 ± 1.08 |

Systolic blood pressure and heart rate were measured at 36 weeks of age. Biochemical tests of urine and blood were measured at 40 weeks of age. The Sirius red positive area assessed the fibrous area of the kidney at 42 weeks of age. Each value is represented as mean ± standard deviation ($n=3-6$). [#] $p<0.05$; significantly different from *db/m* group. ^{*} $p<0.05$, ^{**} $p<0.01$; significantly different from 2K group. [†] $p<0.05$, ^{††} $p<0.01$; significantly different from Vehicle group. UACR, urinary albumin-creatinine ratio; Ccr BM, creatinine clearance body mass corrected; BUN, blood urea nitrogen.

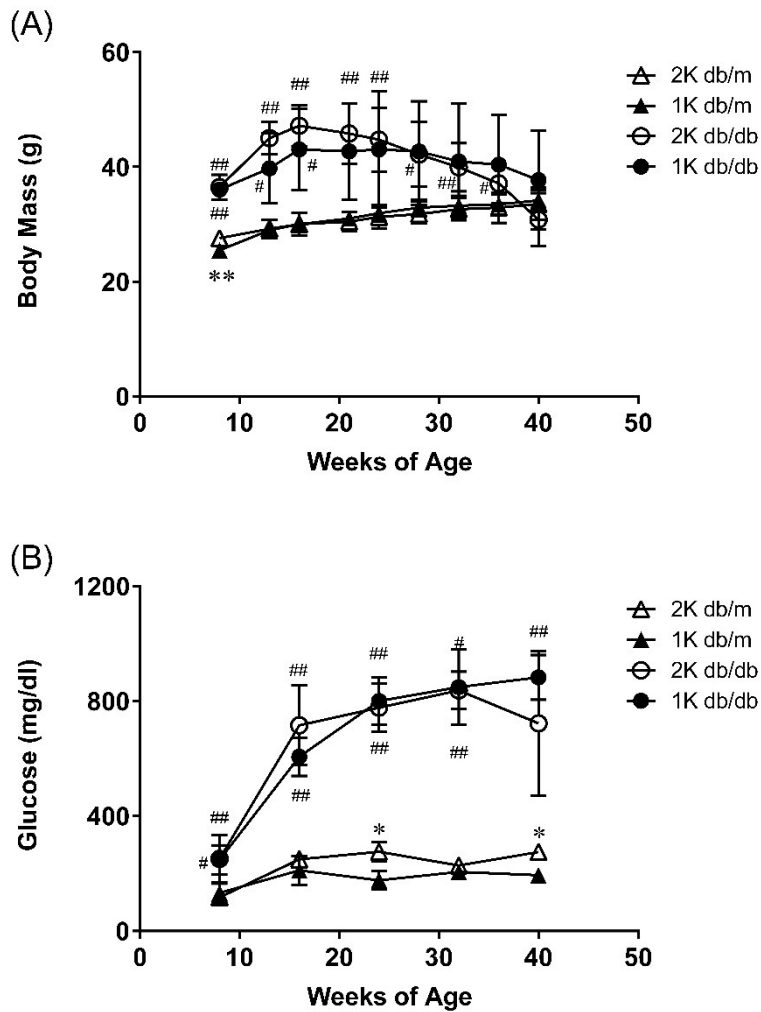


Fig. 1 (A) Body mass was monitored once every four weeks and (B) blood glucose levels were measured once every eight weeks from study start to study termination. Data represent means \pm standard deviations ($n=3-6$). # $p<0.05$, ## $p<0.01$; significantly different from *db/m* group. * $p<0.05$; significantly different from 2K group. 2K *db/m* = intact *db/m* mice, 1K *db/m* = uninephrectomized *db/m* mice, 2K *db/db* = intact *db/db* mice, 1K *db/db* = uninephrectomized *db/db* mice

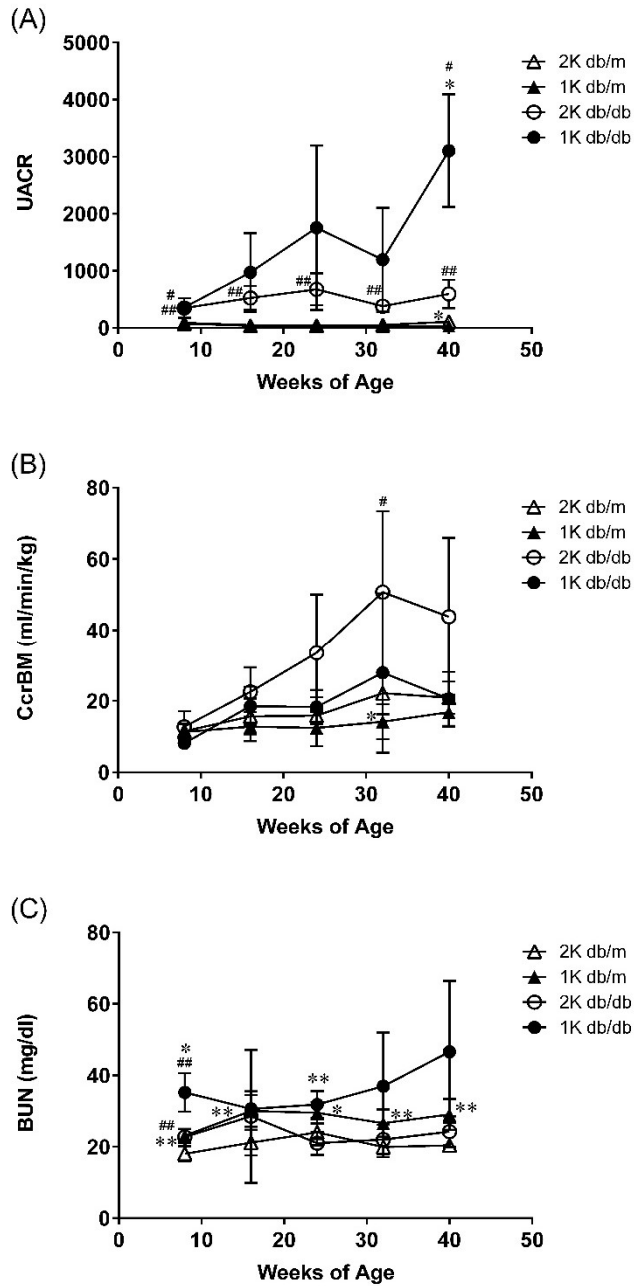


Fig. 2 (A) Urinary albumin-creatinine ratio (UACR), (B) Creatinine clearance by body mass corrected (Ccr BM) and (C) blood urea nitrogen concentration (BUN) were measured once every eight weeks from study start to study termination. Data represent mean \pm standard deviation (n=3-6). # $p < 0.05$, ## $p < 0.01$; significantly different from *db/m* group. * $p < 0.05$, ** $p < 0.01$; significantly different from 2K group.

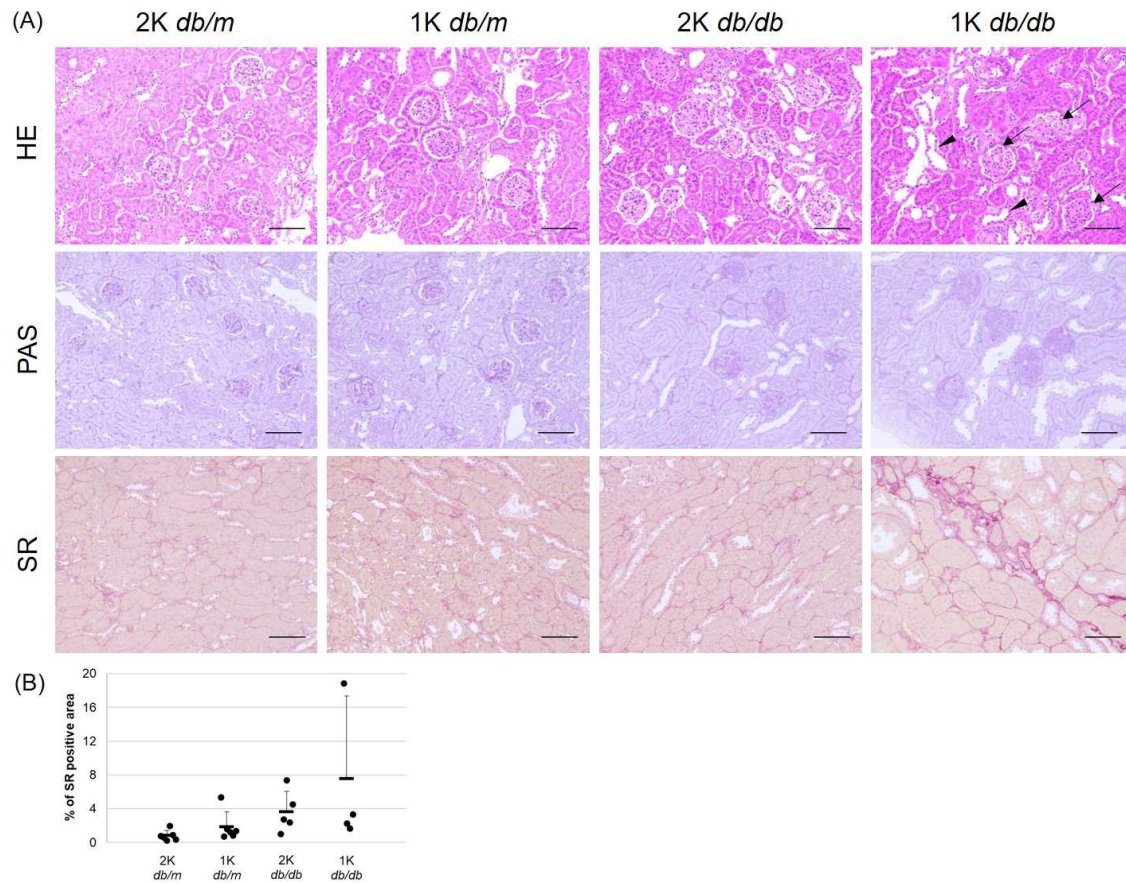


Fig. 3 (A) Kidney histopathology at 42 weeks of age examined by staining with hematoxylin and eosin (HE), Schiff periodate (PAS), and Sirius Red (SR) in four mouse groups. Bar = 100 μ m. Uninephrectomy was associated with a shift toward increasing glomerular size (arrows), an increase in mesangial area, and tubular damage including dilatation (arrowheads) in 1K *db/db* mice. (B) The data (percent of Sirius Red positive areas) are shown as individual points as well as means \pm standard deviations.