

ESMN School, Tatranská Lomnica, November 2004

Sunspot observations

Michal Sobotka

Astronomical Institute, Academy of Sciences of the Czech Republic, Ondřejov

Historical observations of sunspots

Ocassional naked-eye observations (China)

First telescopic observations:

1610 - T. Harriot

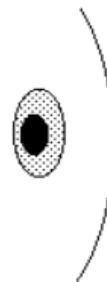
1611 - J. Fabricius (*first publication*)

C. Scheiner

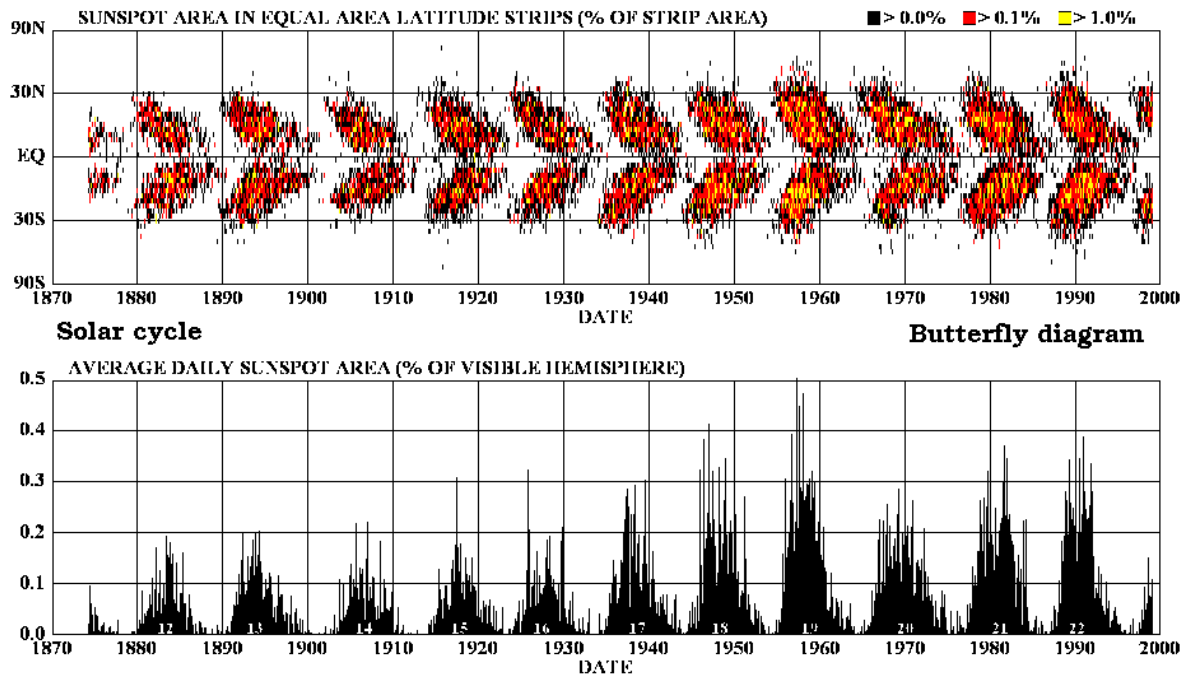
Galileo (*spots are surface phenomena*)

1769 - A. Wilson

Wilson depression



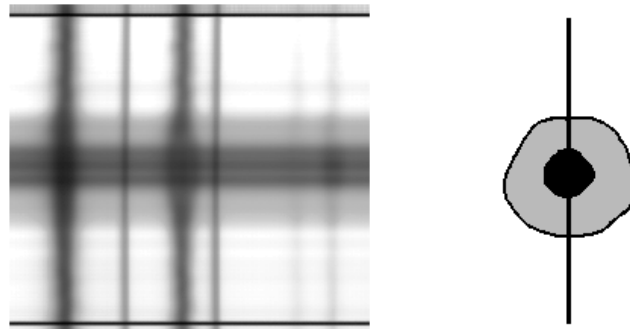
DAILY SUNSPOT AREA AVERAGED OVER INDIVIDUAL SOLAR ROTATIONS



<http://science.nasa.gov/sol/pod/solar/images/bfly.gif>

NASA/MSFC/LATHAWAY 04/99

Spectroscopy of sunspots



1908 - G. E. Hale: Magnetic splitting of spectral lines

Intensity and inclination of mag. field in large spots:

$B \sim 3000 \text{ G}$ in the center of umbra

$\gamma \sim 0^\circ \quad 40^\circ \quad 70^\circ$



1909 - J. Evershed: Shift and asymmetry of spectral lines

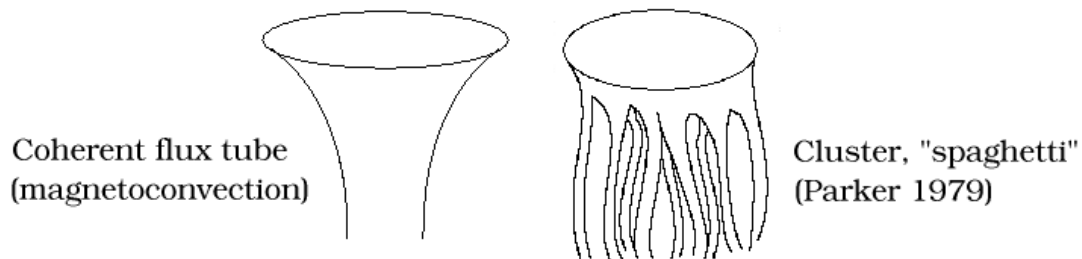
--> a few km/s outflow in the penumbra

Sunspot = magnetic flux tube breaking through the solar photosphere (Cowling 1934)

Sunspots are cooler than their surroundings:

- Convective transport of heat restricted by magnetic field (Biermann 1941)
- Heat flux is spread over a greater area due to fanning out of field lines (Hoyle 1949)

Basic models



Magneto hydrostatic equilibrium:

Vertical magnetic field in a stratified atmosphere (Priest 1982)

Magnetic field $B(R)$ is constant with height z .
Maximum value B_i is on the vertical axis ($R = 0$)
and $B \rightarrow 0$ for large R .

Pressure stratifications on the axis and far from it:
 $p_i(z)$ and $p_e(z)$.

The conditions of horizontal and vertical pressure balances are

$$p(R, z) + B^2(R)/2\mu = p_e(z) \quad (1)$$

$$\frac{\partial p}{\partial z} = -\rho(z)g, \quad (2)$$

where μ , ρ , and g are magnetical permeability, gas density, and gravitational acceleration, respectively.

Particularly, far from the axis we have

$$\frac{dp_e}{dz} = -\rho_e(z)g \quad (3)$$

and on the axis

$$p_i(z) + B_i^2/2\mu = p_e(z) \quad (4)$$

$$\frac{dp_i}{dz} = -\rho_i(z)g. \quad (5)$$

Differentiating (4) we see that $dp_e/dz = dp_i/dz$ and from (3) and (5) it follows that

$$\rho_i(z) = \rho_e(z). \quad (6)$$

Moreover, from (4) we see that $p_i < p_e$ and, introducing the ideal gas equation of state, we obtain the ratio of internal and external temperatures:

$$\frac{T_i(z)}{T_e(z)} = 1 - \frac{B_i^2}{2\mu p_e(z)}. \quad (7)$$

Usually, in the umbra at the level of the photosphere

$$B_i^2/2\mu > p_e(z) \quad (8)$$

(magnetic pressure for $B = 3000$ G is about 2.4×10^4 N/m², while the photospheric gas pressure at $\tau_{5000} = 1$ is only 1.4×10^4 N/m²). The horizontal equilibrium is perturbed and *the tube diverges, increasing its radius with height*. As a consequence,

$$dB_i/dz < 0 \quad (9)$$

and, since

$$p_i(z) + B_i(z)^2/2\mu = p_e(z), \quad (10)$$

the pressure gradient inside the tube is higher than the gradient outside. This results in smaller density inside the tube:

$$\rho_i(z) < \rho_e(z). \quad (11)$$

This density deficit in sunspots is partially responsible for the Wilson depression.

METHODS OF OBSERVATION

IMAGING AND TIME SERIES OF IMAGES

**morphology, broad-band photometric data,
evolution, horizontal motions**

**highest spatial and temporal resolution
correlation or sunspot trackers, adaptive optics**

**post-processing: speckle reconstruction
phase-diversity reconstruction**

**horizontal dynamics: local correlation tracking (LCT)
feature tracking**

SPECTROSCOPY AND POLARIMETRY

thermal stratification, Doppler velocities

polarimetry - I, (Q, U), V: magnetic field (vector)

**moderate spatial resolution, but trackers and adaptive optics
can greatly improve the results**

moderate temporal resolution

highest spectral resolution

**processing: inversion of profiles (I, Q, U, V) of spectral lines
to obtain a semi-empirical model of the atmosphere**

2D SPECTROSCOPY AND POLARIMETRY

maps of thermal stratification, Doppler velocities, magnetic field

*** *fast scanning with a slit spectrograph***

**scanning in spatial direction perpendicular to the slit
moderate spatial resolution (trackers, AO improve)
poor temporal resolution
spectral resolution as high as for 1D spectroscopy**

*** *Fabry-Perot spectrometers, tunable filters***

**scanning in wavelength
high spatial resolution (combined with speckle reconstruction)
moderate temporal and spectral resolution**

*** *MSDP (Multichannel Subtractive Double-Pass Spectrometer)***

**simultaneous exposures of a narrow field in several
(about 10) wavelengths
high spatial and temporal resolution
moderate spectral resolution**

LOCAL HELIOSEISMOLOGY

**3D tomographic maps of *subphotospheric*
temperature inhomogeneities, magnetic fields, flows**

data: long time series of dopplergrams (SOHO/MDI)

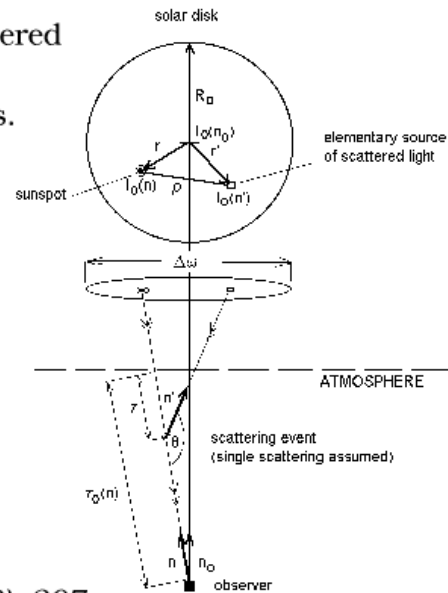
**technique: time-distance helioseimology,
based on measuring travel times of p-modes
between different solar surface points**

CORRECTION FOR SCATTERED LIGHT

In addition to the wavefront distortion in the Earth's atmosphere, light is scattered on dust and water droplets in the air, and on dust and dirt on optical surfaces.

--> bright circumsolar annulus, the **aureole**

Scattered light causes spurious enhancement of intensity in sunspots. The amount of scattered light can be obtained from aureole measurements or from polarimetric measurements, because polarized light comes mostly from the sunspot.



V. Martínez Pillet, *Solar Phys.* 140 (1992), 207

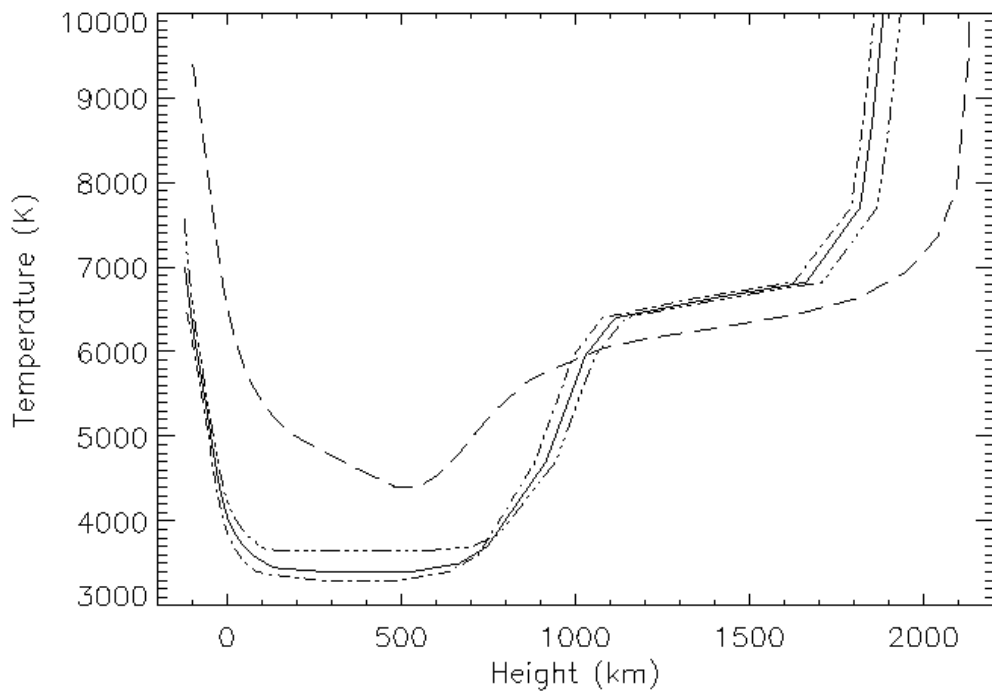
DATA ABOUT SUNSPOTS AND PORES

	Pores	Sunspots
Penumbra	NO	YES
Diameter D_{vis} (Mm)	1 – 6	6 – 40 (total)
Minimum intensity	0.2 – 0.7	0.05 – 0.3
$B(0)$ (G)	1700	3000
$B(R_{vis})$ (G)	1200	800
Inclination $\gamma(R_{vis})$	$40^\circ - 60^\circ$	$\sim 70^\circ$
Dependence on D_{vis}	strong	for $D_u < 6$ Mm

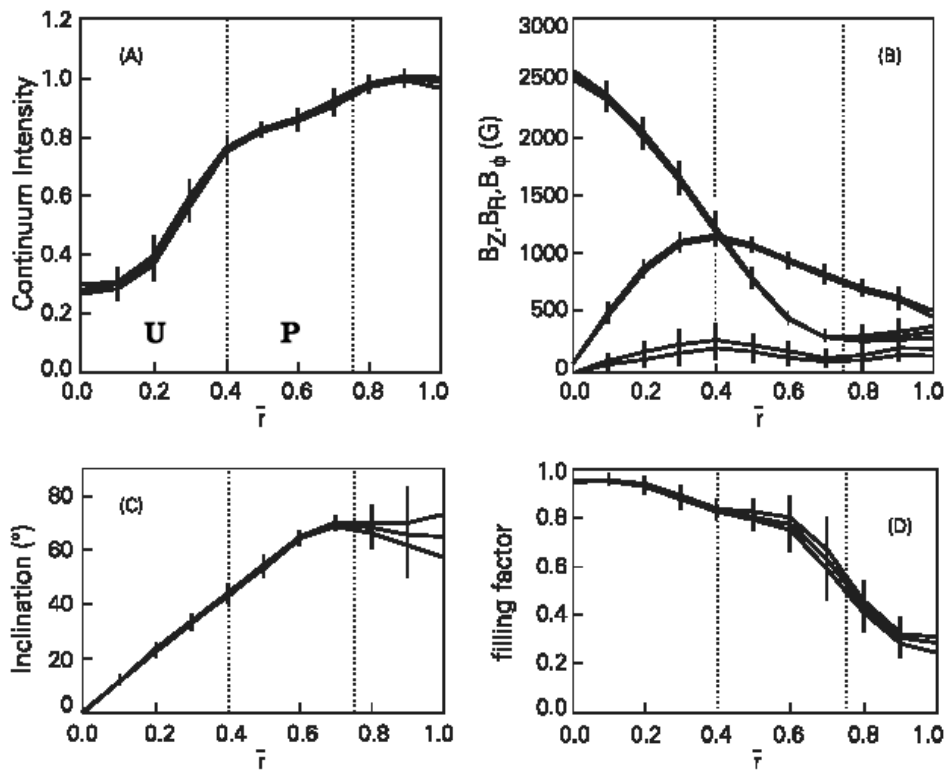
Sources: *Sütterlin 1998; Keil et al. 1999*

“Magnetic diameter” $D_m > D_{vis}$ (*Keppens & Martínez Pillet 1996*).

Pore → more magnetic flux → more inclination of **B** →
→ penumbra formation → **Sunspot**



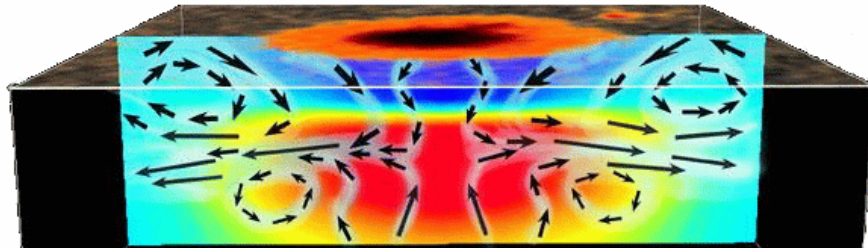
Temperature stratification in umbral models by Maltby et al. (1986). Dashed line corresponds to quiet sun.



Magnetic field distribution (Keppens & Martínez Pillet 1996)

RESULTS OF HELIOSEISMOLOGY

(Gizon 2000, Zhao et al. 2001, Kosovichev 2002)



- * sunspot is cooler than its surroundings only to the depth of 5 Mm
- * converging flows are found below 1.5 Mm, deeper changing to downflows
- * strong outflows at 6 - 10 Mm
- * a radial outflow of 1 km/s is found above 2 Mm (like Evershed flow)

In favour of the cluster model:

- * a horizontal flow across the sunspot was found at 9 - 12 Mm
- * sunspot has a constant radius in deep layers (Chou et al. 1997)

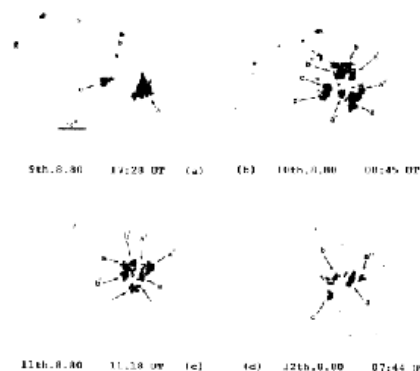
FORMATION OF SUNSPOTS AND PORES

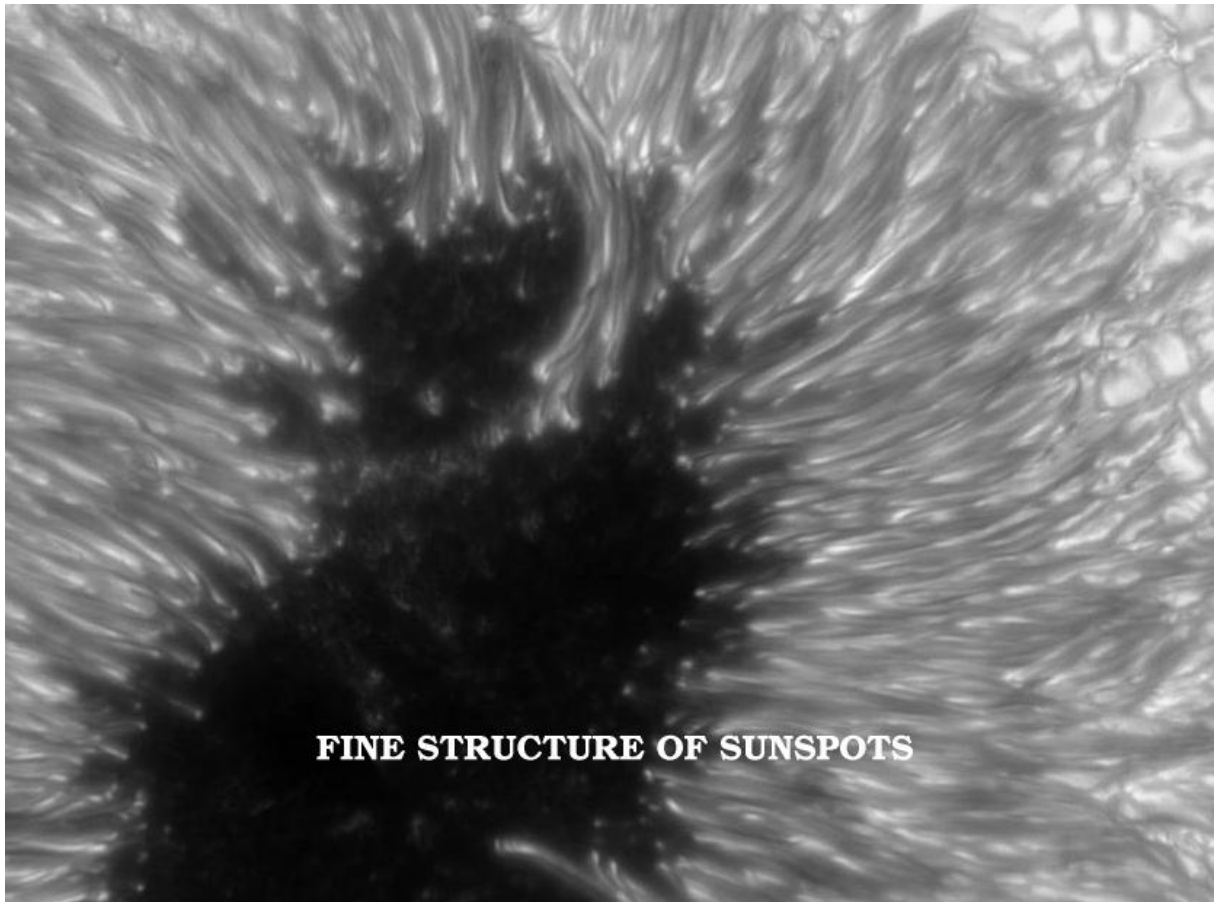
Merging, driven by supergranular and subsurface flows
(e.g. Wang & Zirin 1992, Keil et al. 1999):

Small flux elements → pores and small sunspots (“fragments”) →
→ large sunspots

The “fragments” keep their identity during the lifetime of a sunspot (García de la Rosa 1987) and they are observed as umbral cores or dark nuclei in developed umbrae.

Bright small-scale structures (umbral dots, light bridges) are seen at the interstices of fragments both in sunspots and pores.

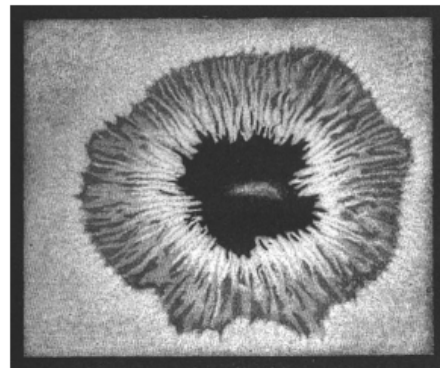




FIRST HIGH-RESOLUTION OBSERVATIONS

Visual: P. A. Secchi 1870

a drawing from the book
"Le Soleil"

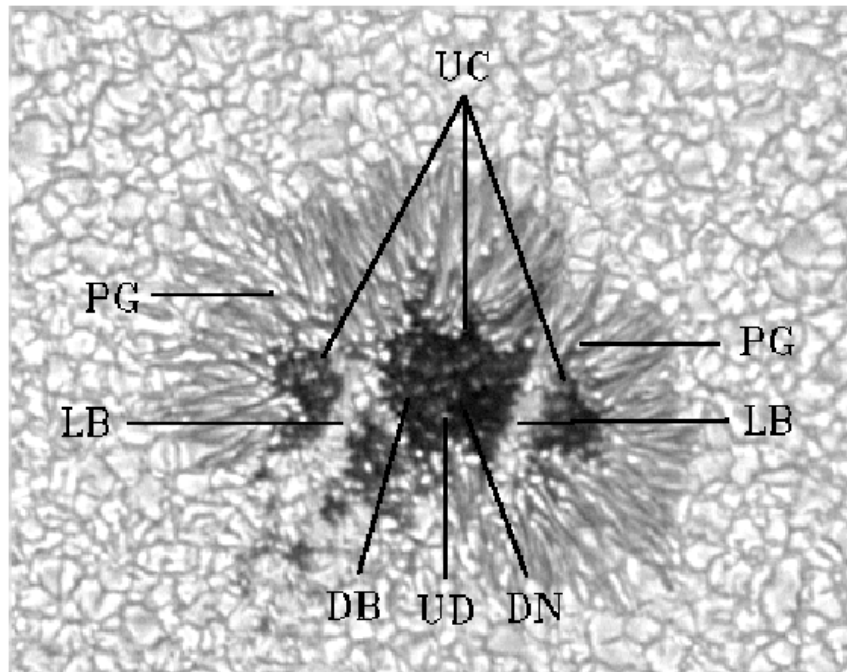


Photographic: S. Chevalier 1916 (resolution 0".7 - 1")

observed: filamentary structure of the penumbra
light bridges
umbral cores and dark nuclei
"umbral granulation"

OVERVIEW OF SUNSPOT FINE STRUCTURE

UC - umbral core, PG - penumbral grain, LB - light bridge,
UD - umbral dot, DN - dark nucleus, DB - diffuse background



THE PENUMBRA

PENUMBRAL FILAMENTS

- * **Brightness:** On average, 1 I_{ph} (bright), 0.6 I_{ph} (dark)
Terms "bright" and "dark" have only local meaning.
- * **Width:** Derived from power spectra:
 - 250 km (0".35) - Balthasar et al. (2001), Sütterlin (2001)
 - unresolved ? - Sánchez Almeida & Bonet (1998)
 - 1-m SST, La Palma:
 - many filaments are narrower than 80 km (0".11)Roupe van der Voort (2004)
- * **Dark cores in bright filaments**
 - best seen in the inner penumbra
 - Scharmer et al. (2002, 1-m SST), Sütterlin et al. (2004, DOT)

PENUMBRAL FILAMENTS: Magnetic and velocity fields

Pioneering work: Beckers & Schröter (1969)

Many observations have been done, giving different results depending on examined depth in the atmosphere (spectral lines, technique).

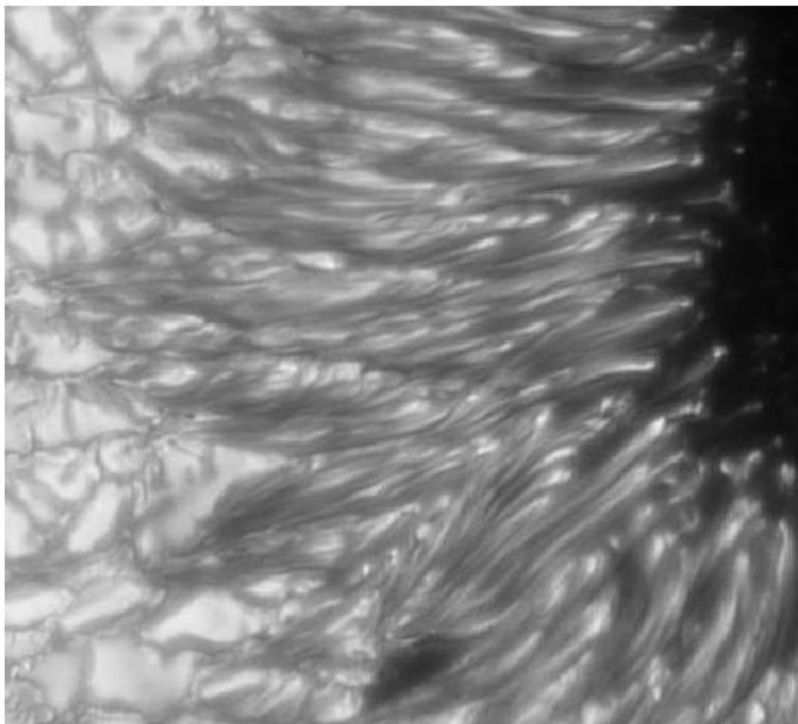
This still open problem converges to the following:

- (1) Dark filaments host more inclined magnetic field (by $30^\circ - 40^\circ$) compared to bright filaments, and possibly stronger in intensity.
Wiehr (2000), Westendorp Plaza et al. (2001), Bellot Rubio et al. (2003)
- (2) Evershed flow tends to be aligned with more inclined magnetic field, i.e., with dark filaments. Its filamentary structure is seen in deep layers.
Roupe van der Voort (2002), Bellot Rubio et al. (2003), Tritschler et al. (2004)

Upflows are observed near the umbra-penumbra border and strong downflows near the penumbra-granulation border.

Hirzberger & Kneer (2001)

PENUMBRAL GRAINS comet-like bright features in bright filaments



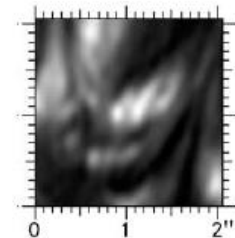
Muller (1973)

Brightness:
0.85 - 1.10 I_{ph}

Width: $\sim 0''.5$

Internal structure
- dark bands

Roupe van der
Voort et al. (2004)



SST, June 2004

Horizontal motions of penumbral grains

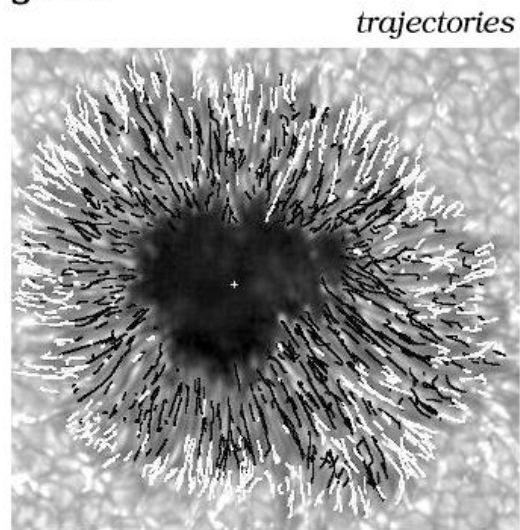
Inner penumbra:
Mostly inwards, 0.5 km/s

Outer penumbra:
Mostly outwards, 0.75 km/s

Sobotka et al. (1999)
Sobotka & Sutterlin (2001)

Some inward-moving grains
penetrate into the umbra
(Ewell 1992).

About 1/3 of outward-moving
grains cross the outer penumbral
boundary, evolve into a small
bright feature or a normal photospheric granule and continue to move
radially away from the spot (Bonet et al. 2004).



Lifetimes of penumbral grains

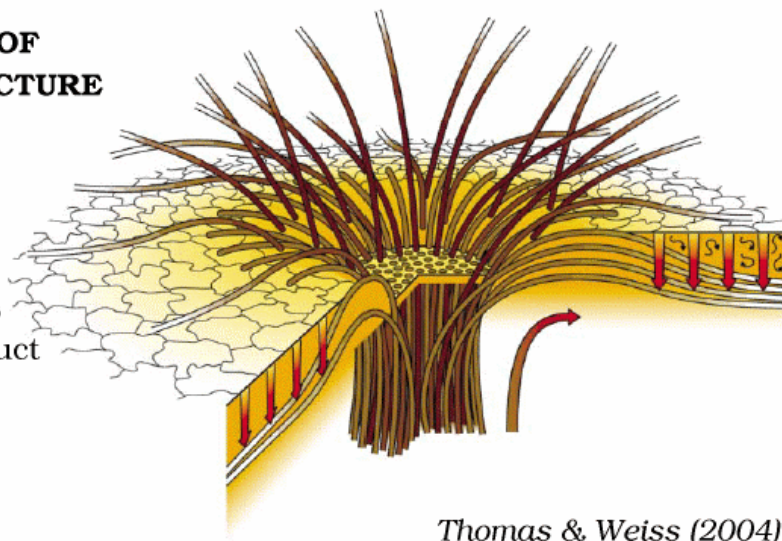
Mean: 40 min (inward-moving), 25 min (outward-moving)

INTERPRETATION OF PENUMBRAL STRUCTURE

Two systems of
flux tubes with
different inclination.

Horizontal flux tubes
are expected to conduct
Evershed flow.

"Uncombed"
penumbral model
Solanki & Montavon
(1993)



Thomas & Weiss (2004)

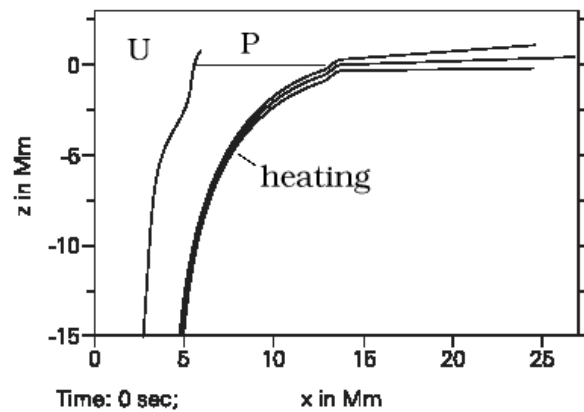
Figure 11 Sketch showing the interlocking-comb structure of the magnetic field in the filamentary penumbra of a sunspot (after Thomas et al. 2002a). The bright radial filaments, where the magnetic field is inclined (at approximately 40° to the horizontal in the outer penumbra), alternate with dark filaments in which the field is nearly horizontal. Within the dark filaments, some magnetic flux tubes (i.e., bundles of magnetic field lines) extend radially outward beyond the penumbra along an elevated magnetic canopy, while other, "returning" flux tubes dive back below the surface. The sunspot is surrounded by a layer of small-scale granular convection (*squiggly arrows*) embedded in the radial outflow associated with a long-lived annular supergranule (the moat cell) (*large curved arrow*). The submerged parts of the returning flux tubes are held down by turbulent pumping (*vertical arrows*) by the granular convection in the moat.

Moving tube model

Schlichenmaier et al. (1998)

Interpretation of

- inward motion of penumbral grains
- Evershed flow



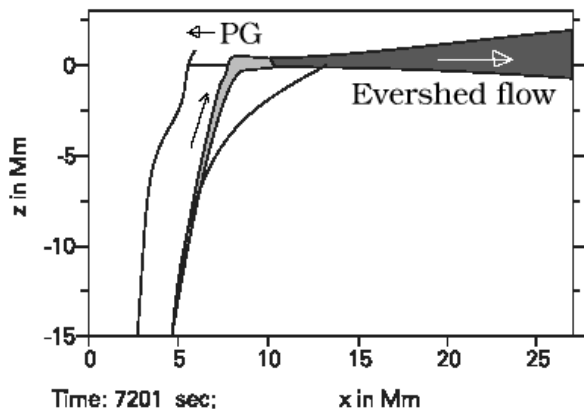
Photospheric "serpent"

Schlichenmaier (2002)

Flux tube, instead of lying horizontal, develops waves.

Interpretation of

- outward motion of PGs
- downflows in penumbra



LIGHT BRIDGES

Location in the umbra

usually at the interstices between "fragments"

- * separating umbral cores - "strong" light bridges
- * embedded in the umbra - "faint" light bridges

Structure

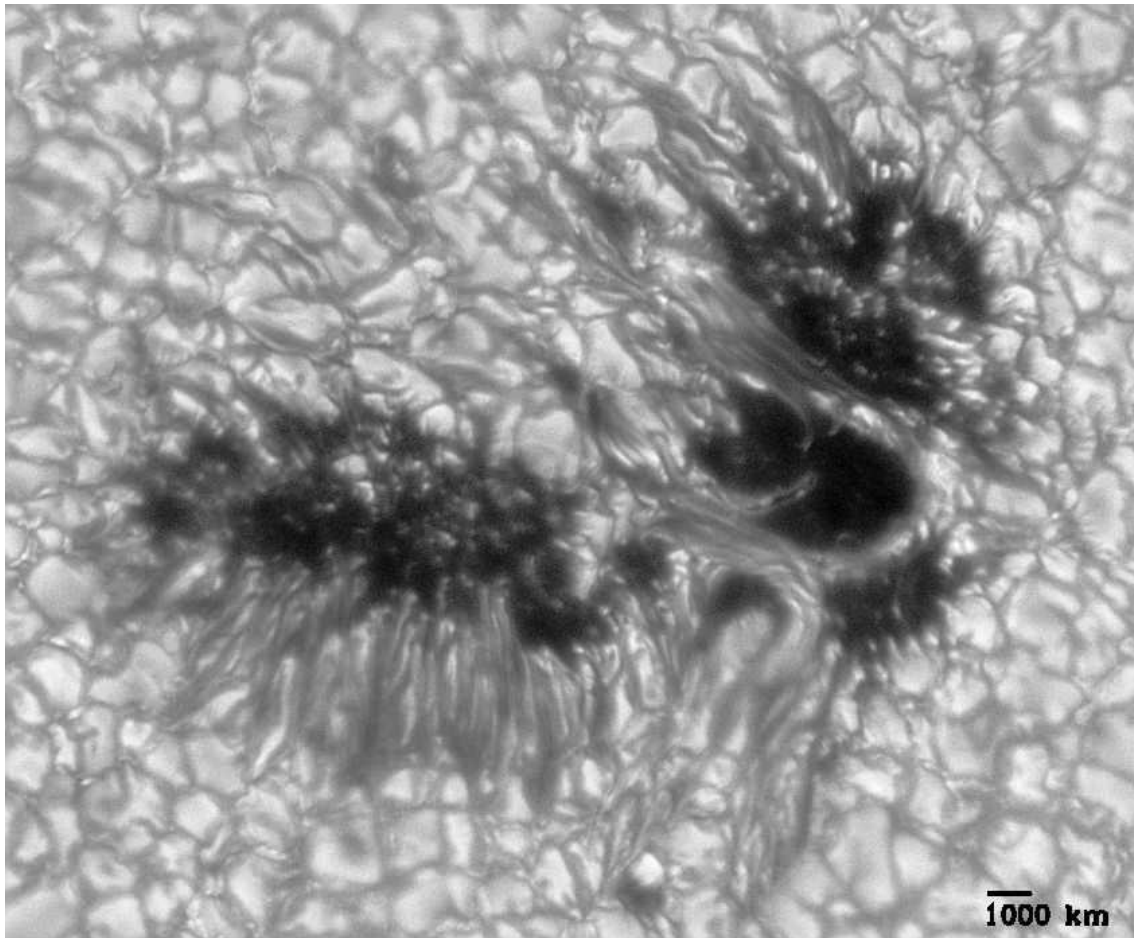
- * granular, size of grains from 0".2 to 1".2
sometimes, a central dark lane is observed
- * filamentary, penumbra-like bright filaments
- * mixed

Evolution

Sunspot formation:

granulation --> light bridge --> chain of umbral dots

Sunspot decay: A reverse scenario



Magnetic field and velocities in light bridges

B is reduced by 500 - 1200 G with respect to the surrounding umbra. Magnetic field is inclined, but less than in penumbra. (Leka 1997)

Possible existence of magnetic canopy above light bridges.

Upflows and downflows (max. 400 m/s) indicating convective motions.

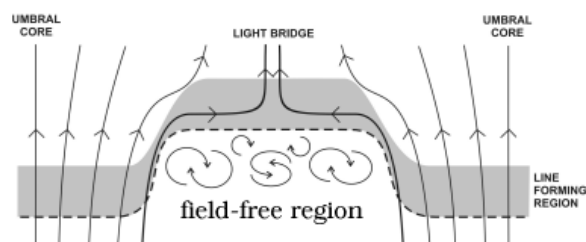
In granular LBs, convective elements with upflows in bright grains and downflows in dark lanes are observed. Velocities and cell sizes are smaller, lifetimes longer than in photospheric granulation.

(Rimmele 1997)

Irregular horizontal motions of grains (300 m/s, Hirzberger et al. 2002)

Steady horizontal flow (900 m/s) along LB (Berger & Berdyugina 2003)

LBs are deep-rooted structures of convective origin.



UMBRAL DOTS

BRIGHTNESS AND SIZE

Restricted by telescope aperture,
seeing, signal-to-noise ratio,
Many UD are spatially unresolved.

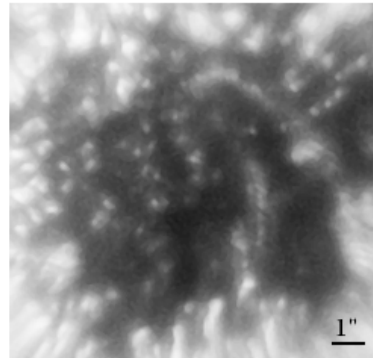
Indirect methods to find "true"
brightness and size:

- two-color photometry (Beckers & Schröter 1968)
- two-component thermal models (Sobotka et al. 1993)

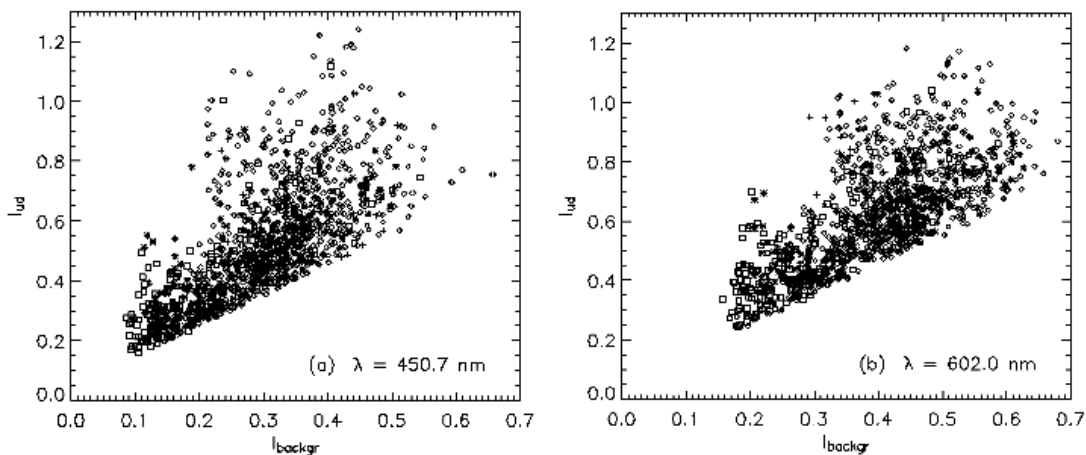
Brightness: Observed in the range $0.2 - 0.7 I_{ph}$
Peripheral UDs are brighter than central UDs
Brightness is related to local background intensity

$$I_{ud} \cong 1.5 I_b \quad (\text{observed})$$

$$\text{"True" brightness: } I_{ud} \cong 3 I_b$$



Sobotka & Hanslmeier (in preparation) - 1-m SST, 2003

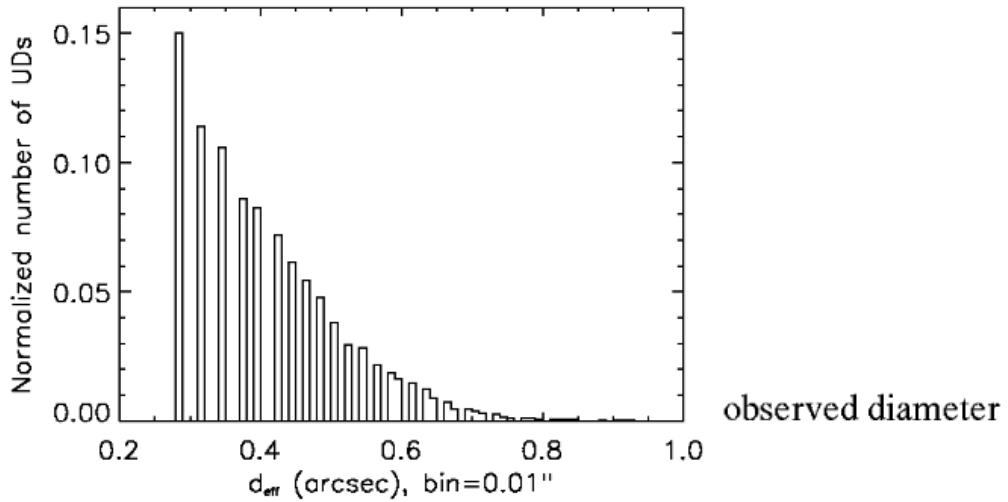


Observed UDs vs. background intensities

blue: $I_{ud}/I_{db} \sim 1.8$

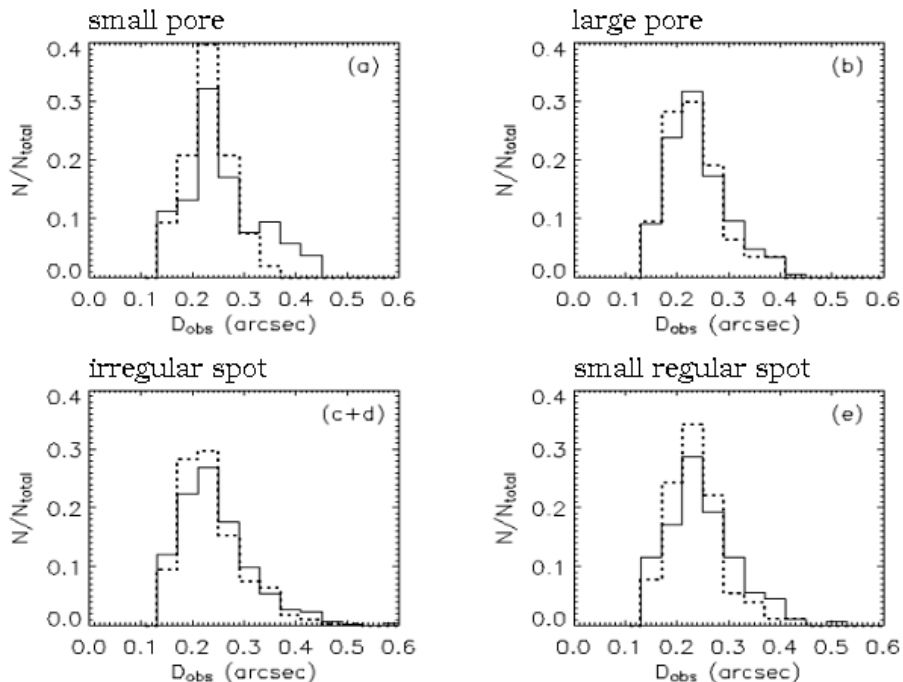
red: $I_{ud}/I_{db} \sim 1.6$

Observed size:



Sobotka et al. (1997): Number of UDs increases with decreasing D, i.e., smallest UDs are not spatially resolved (0.5 m telescope)

Tritschler & Schmidt (2002): The same result, with 0.7 m telescope and phase-diversity image restoration



Observed diameters: Most of UDs are spatially resolved !
Typical observed diameter: 0".23 (165 km)

Two-colour photometry technique: "True" intensities and sizes

Beckers & Schröter (1968)

$$I_\lambda = I_\lambda^{db} + \Delta I_\lambda, \quad J_\lambda = J_\lambda^{db} + \Delta J_\lambda, \quad J_\lambda^{db} \sim I_\lambda^{db} \quad \lambda = blue, red$$

The flux is not influenced by image degradation

$$(*) \quad \Delta I_\lambda D_\lambda^2 = \Delta J_\lambda d_\lambda^2, \quad d_{blue} = d_{red}$$

colour index c : calculated from observed values

$$\Delta J_{blue} = c \Delta J_{red}, \quad c = \frac{\Delta I_{blue} D_{blue}^2}{\Delta I_{red} D_{red}^2}$$

Obtaining colour temperature T from colour index c by fitting Planck curve

– a system of two equations for ΔJ_{red} and T

$$J_{blue} = J_{blue}^{db} + c \Delta J_{red} = B_{blue}(T) / I_{blue}^{ph}$$

$$J_{red} = J_{red}^{db} + \Delta J_{red} = B_{red}(T) / I_{red}^{ph}$$

and d from (*)

Calculated intensities and sizes of UDs

Results of two-colour photometry (Sobotka & Hanslmeier, in prep.)

About 50 % of UDs are brighter and hotter than the mean quiet photosphere

Calculated diameters of UDs

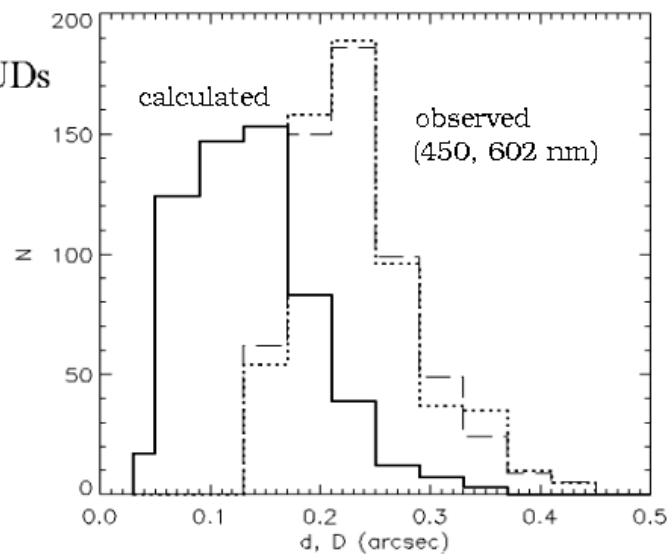
average $d = 0.14''$
(100 km)

median $d = 0.13''$
(95 km)

**Mean free photon path
(500 nm continuum)**

umbra: ~ 70 km

photosphere: ~ 90 km



SPATIAL DISTRIBUTION OF UMBRAL DOTS

Non-uniform, preferred locations, clusters and chains.

Nearest-neighbour distance ($0''.4 - 0''.7$) decreases and observed filling factor (6 - 15 %) increases with increasing brightness of the umbral background

(Sobotka et al. 1993).

Is the umbra heated by umbral dots?

At the visible surface, UDs contribute only by 10 - 20 % of the total flux, so that the umbral brightness is influenced mainly by the brightness of the umbral background.

However, the umbral background can be heated by lateral radiation of UDs below the visible surface.

LIFETIME OF UMBRAL DOTS

66 % : $t < 10$ min

27 % : $10 < t < 40$ min

1 % : $t > 2$ hours

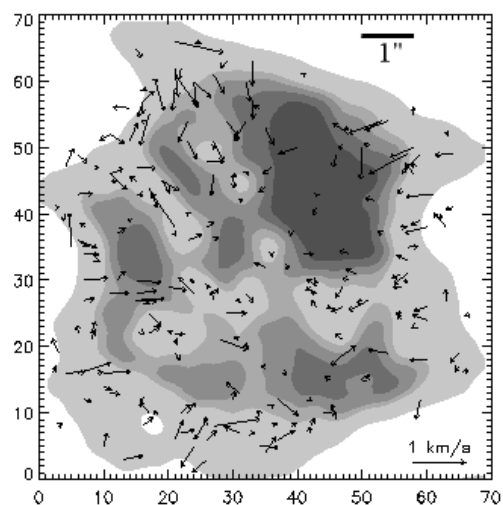
HORIZONTAL MOTIONS

Velocities 0 - 800 m/s

On average, UDs are faster in peripheral parts of umbra, where inward motions prevail.

Relation to inward-moving penumbral grains?

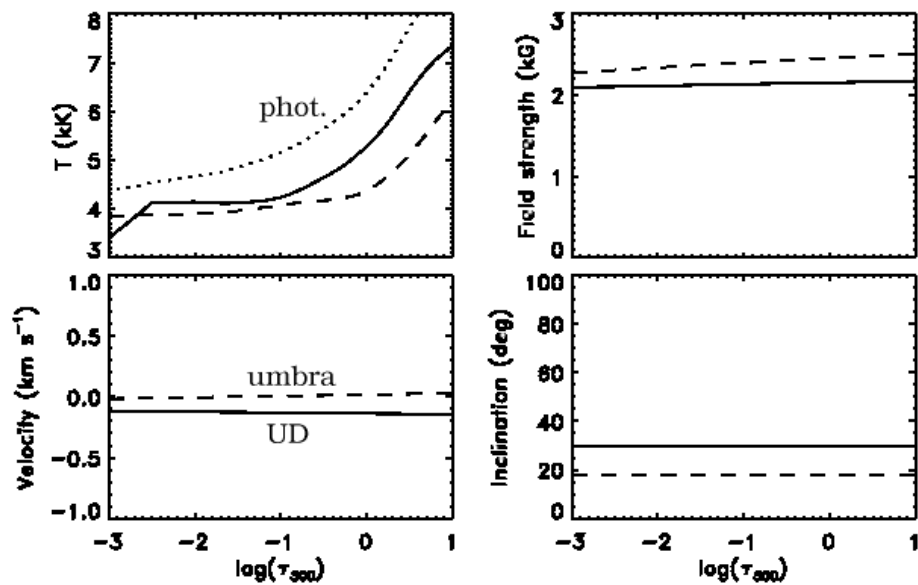
Sobotka et al. (1997)



MAGNETIC FIELD AND LINE-OF-SIGHT VELOCITY

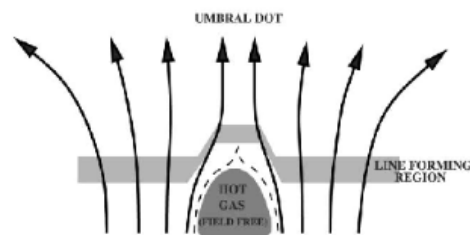
Hard to detect, because

1. UDs are deep-formed structures and their magnetic and velocity signatures are weak at heights of formation of spectral lines.
(Degenhardt & Lites 1993)
 2. Lines are formed at different heights in UDs and in the umbra.
- Magnetic field in umbral dots is weaker by 10 %
(Schmidt & Balthasar 1994; Socas Navarro et al. 2004)
 - Upflows of 200 - 1000 m/s are observed in deepest layers
(Socas Navarro et al. 2004; Rimmele 2004)
 - UDs are hotter than the surrounding umbra only below $z = 100$ km
 - Magnetic field in UDs is inclined $30^\circ - 40^\circ$ to the normal
(Socas Navarro et al. 2004)



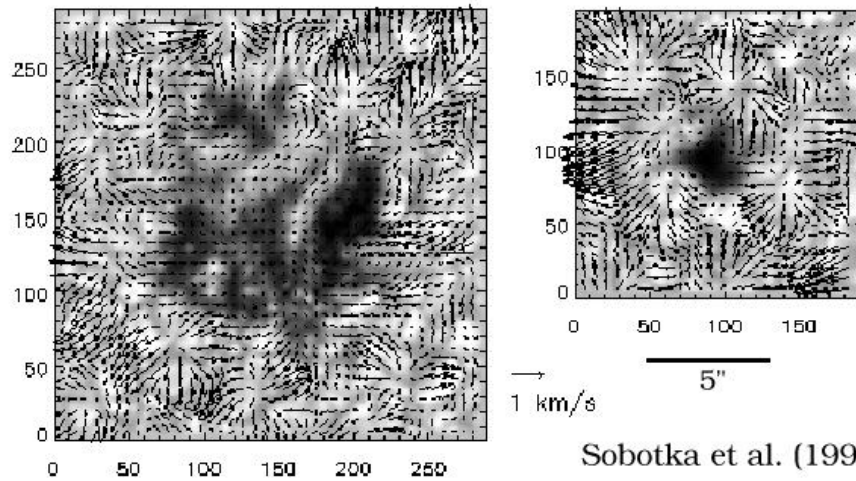
Socas Navarro, Martínez Pillet,
Sobotka, Vázquez (2004)

2D (scanning) spectroscopy,
0.5-m SVST, LPSP



HORIZONTAL MOTIONS AROUND SUNSPOTS AND PORES

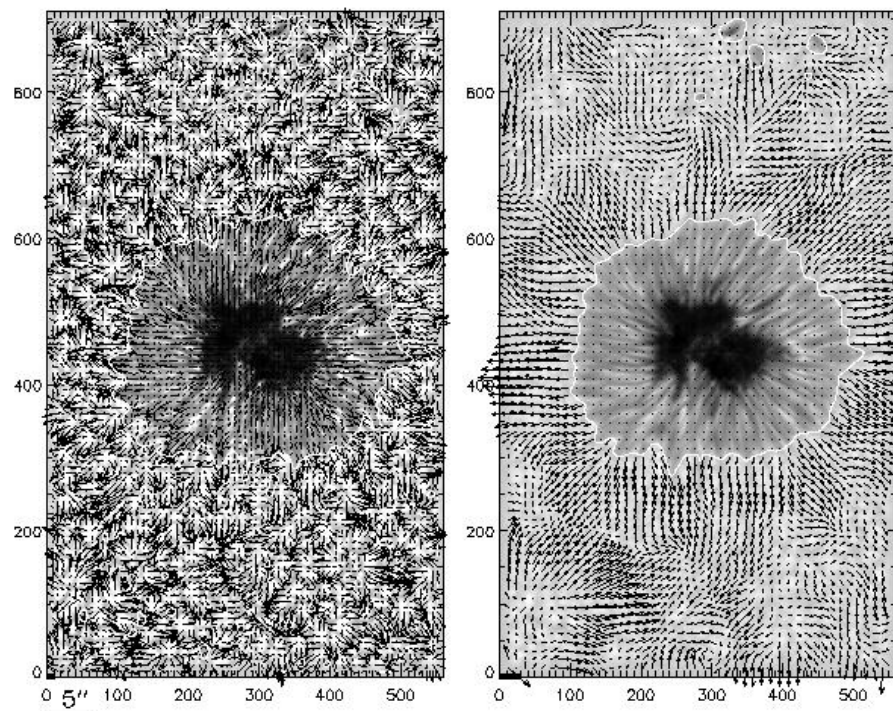
PORES



- * Granules in a 1500 km wide zone around the pore are directed toward the pore. These motions are driven by exploding granules and mesogranules.
- * Some granules (or their fragments) penetrate into the umbra.

SUNSPOTS

- * Local divergent motions ($\sim 3''$) - exploding granules
- * Regular outflow (500 m/s) in the ***sunspot moat***

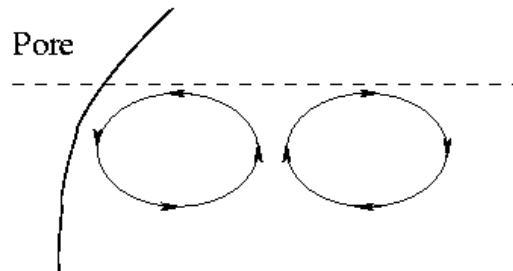


RESULTS OF NUMERICAL SIMULATIONS

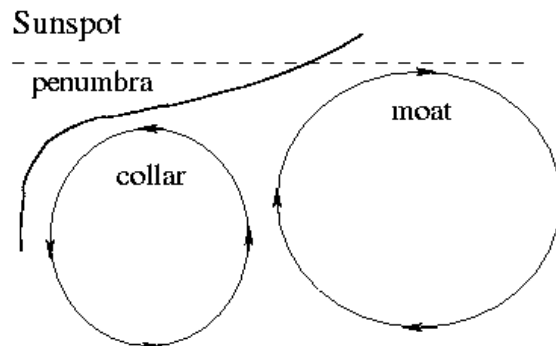
Hurlburt & Rucklidge
(2000)

Plasma neighbouring with
the flux tube is cooled
--> downflows.

Inflows help to stabilize
the pore / sunspot.



Discrepancies with the
results of helioseismology.



SOME CONCLUSIONS

- * We have now a fairly good picture on sunspot structure and dynamics on scales down to $0''.2$.
- * We have also some glimpses on the structure at $0''.1$.
- * This knowledge gives a good input for modelling magnetoconvective and other dynamical processes in sunspots.
- * Helioseismology is promising in revealing sunspots' subsurface structure and needs further development.
- * Cluster ("spaghetti") model of sunspots, supported by some results of helioseimology, needs a deeper elaboration.
- * We still do not know exactly how sunspots are formed and what is the reason for the formation of penumbra.

Recommended review papers:

- Solanki, S.K., 2003, "Sunspots: An overview",
The Astronomy and Astrophysics Review, 11, 153-286
- Thomas, J.H. & Weiss, N.O., 2004, "Fine Structure in Sunspots",
Annual Review of Astronomy and Astrophysics, 42, 517-548.