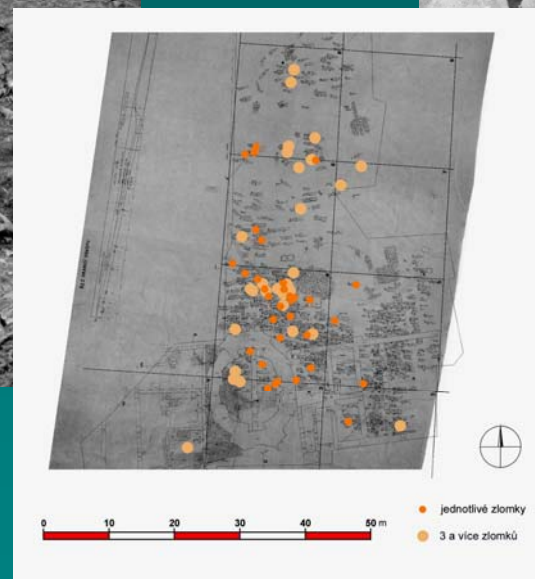
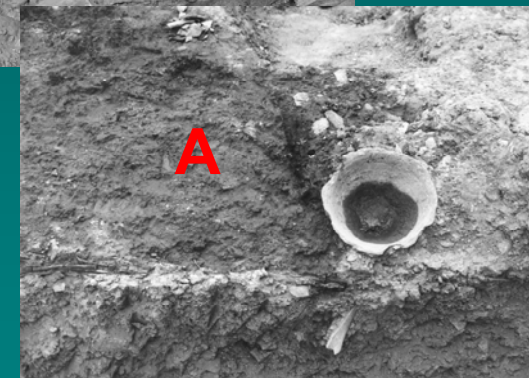
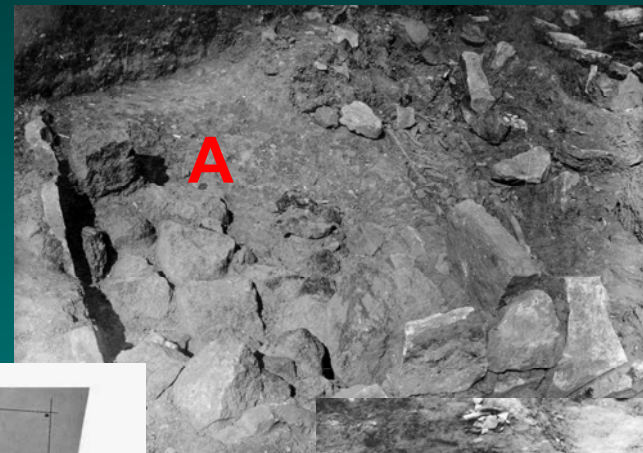
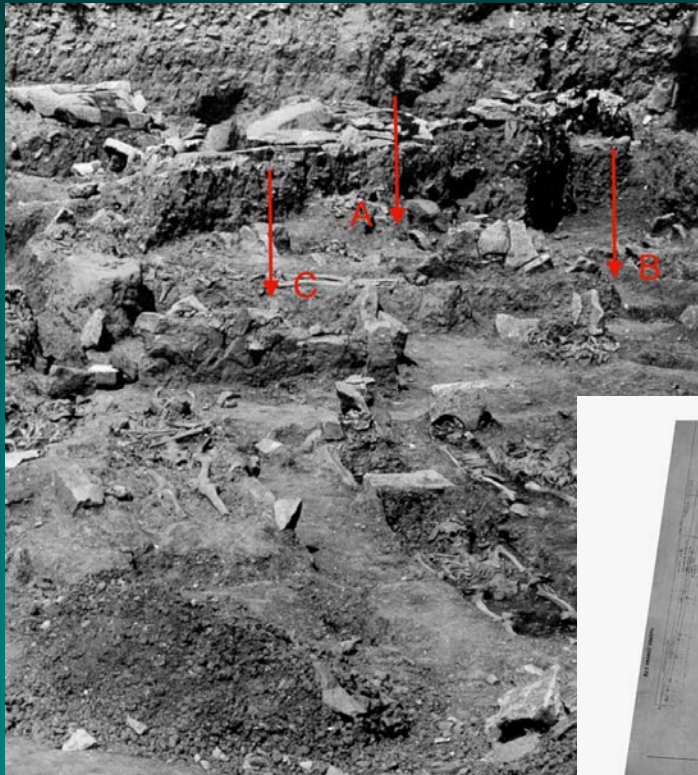


Graveyard reused as a settlement area - settlement area reused as a graveyard?

The burials in the settlement area Prague - Hradčany in the Middle Ages



Ivana Boháčová,
Institute of Archaeology, Prague, v.v.i.
Forum Urbes Medii Aevi, Znojmo 2009

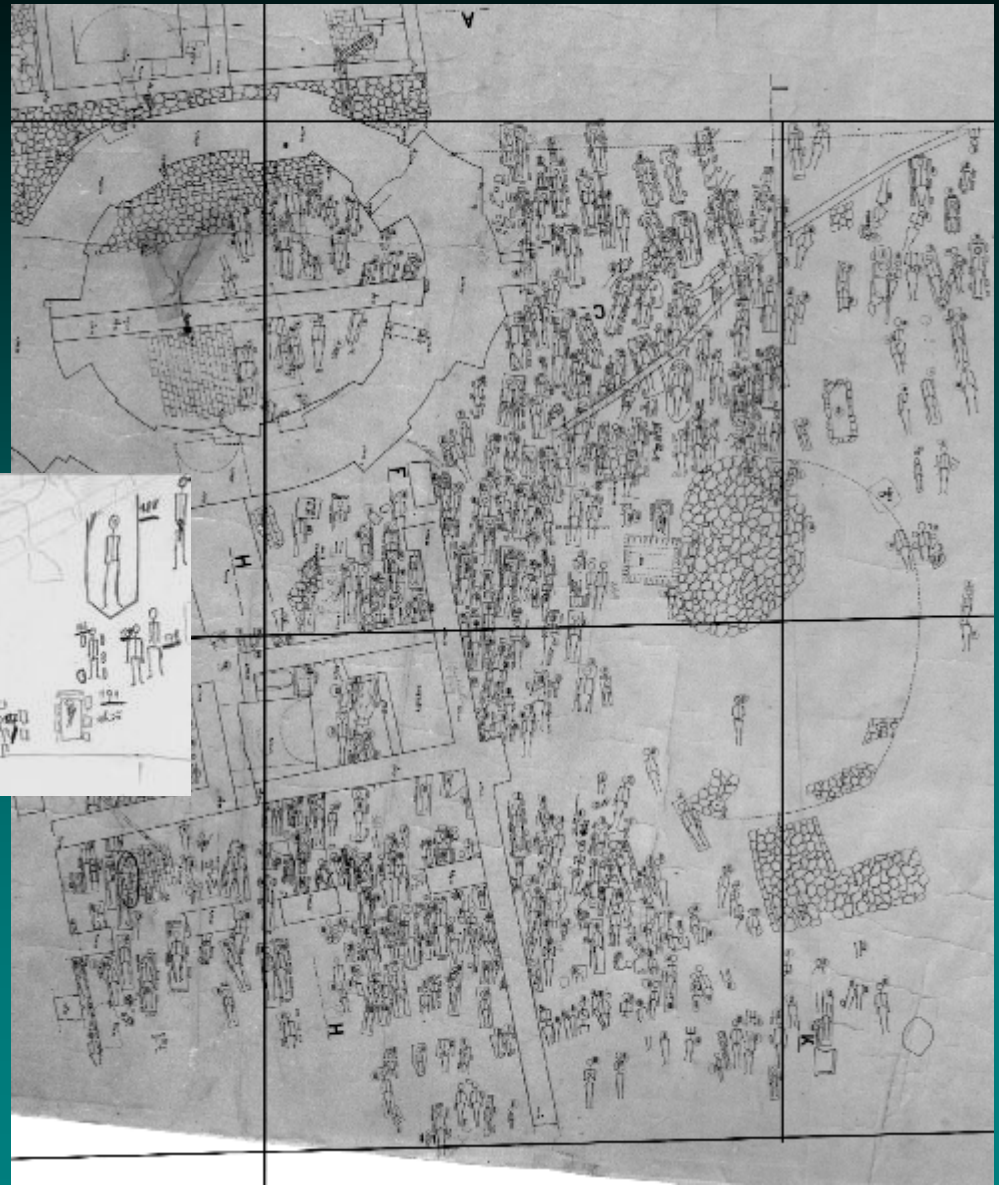
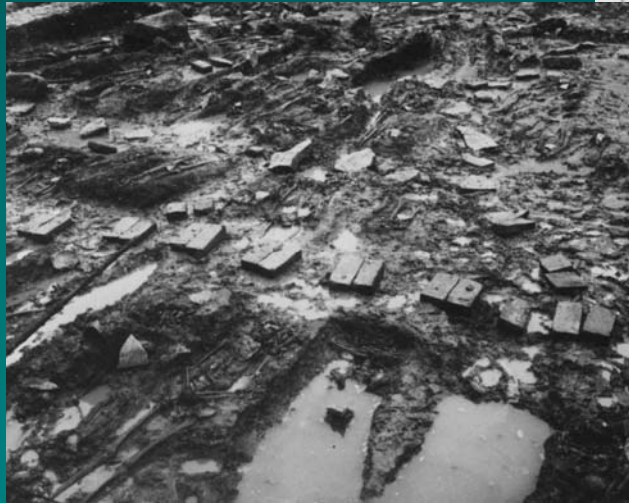
1 The rescue archaeological excavations at Prague – Hradčany, Loreta square 1934-1935, PhDr. IVAN BORKOVSKÝ



The Loreta square and the Prague archaeology in the first half of the 20th century

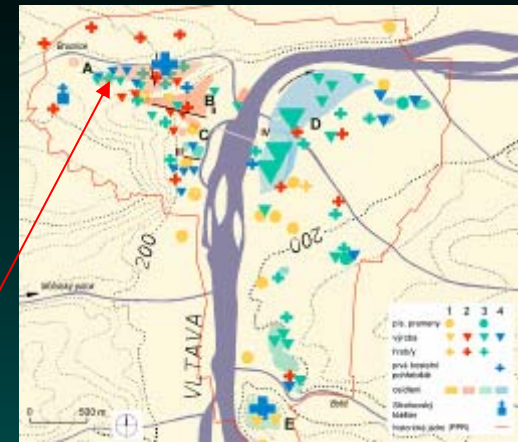
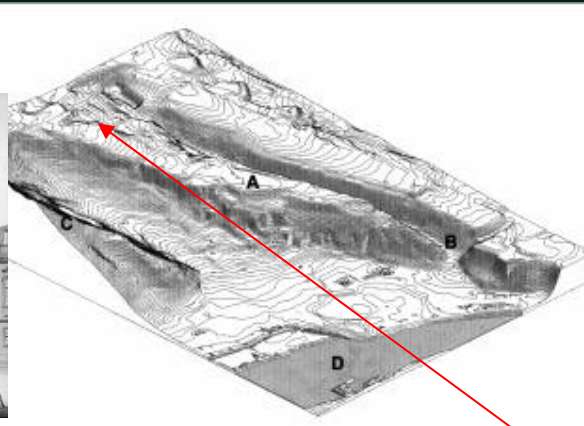
- one of the first rescue excavations of the Early Medieval cultural deposits
- one of the largest areas excavated
- over 600 graves and numerous other human remains displaced

The archive sources



according to Borkovský (no published):
the burial area used during the 9th to the 14th century, the oldest grave from the 6th century

2 The site, location and historical context

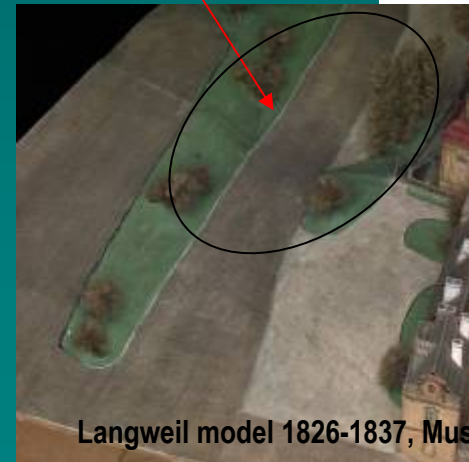
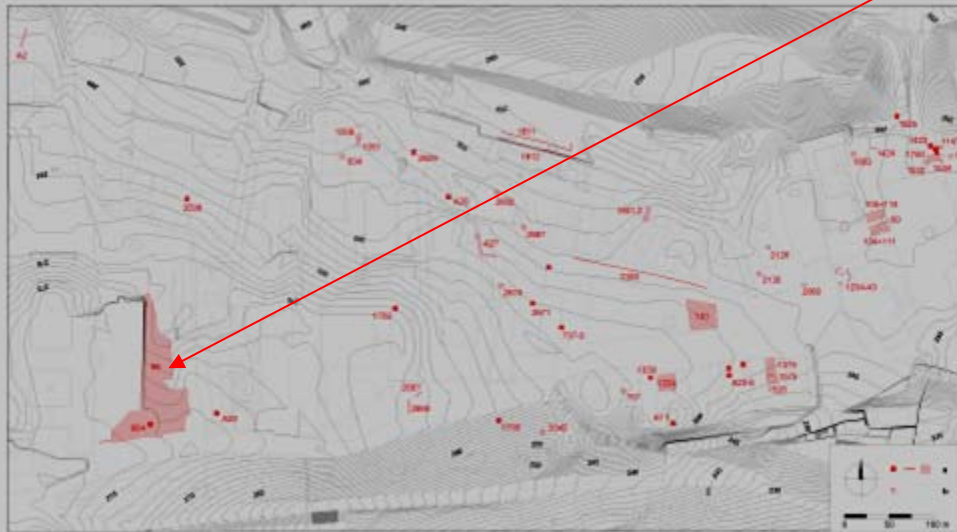


Early Medieval
Prague agglomeration

Middle Hillfort P.
Later Hillfort P. I.
Later Hillfort P. II

- the Hradčany promontory, the eastern slope of a shallow natural depression
- the western part of the Prague-Castle bailey
- the graveyard location – from „extra muros“ to the settlement area

phase	?	1	2	3
historic data	●	●	●	●
production	▼	▼	▼	▼
cemetary	+	+	+	+
oldest with church				+
settlement	■	■	■	■

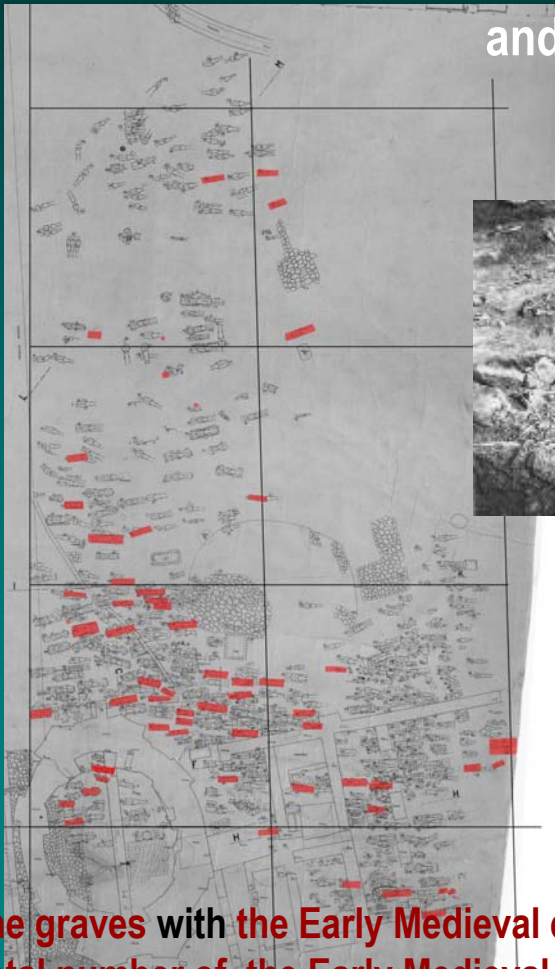


Langweil model 1826-1837, Museum of Prague

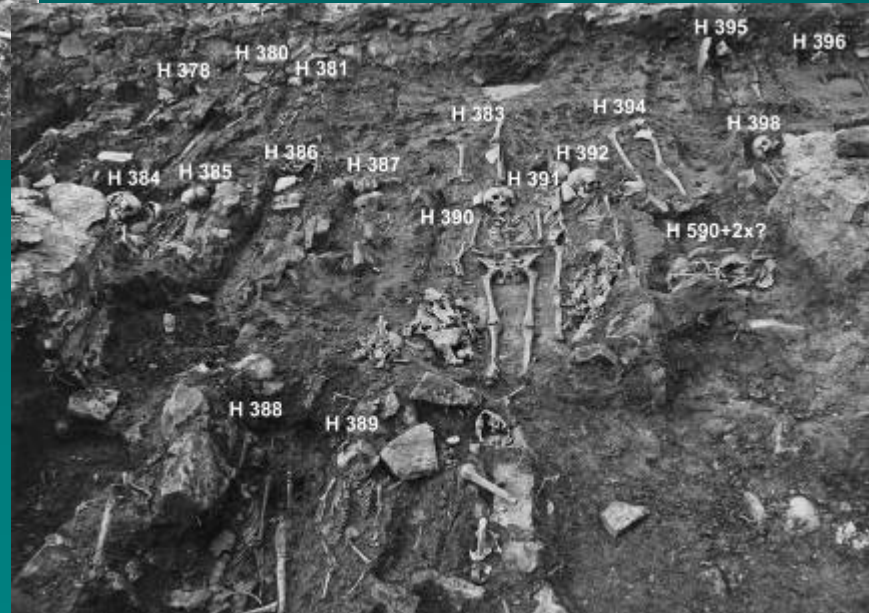
3 The graveyard area

- the isolated burials – Early Slavonic period
- the rapidly increasing graveyard horizon from the half of the 11th century
- the cemetery of the High Middle Ages

and the New Ages



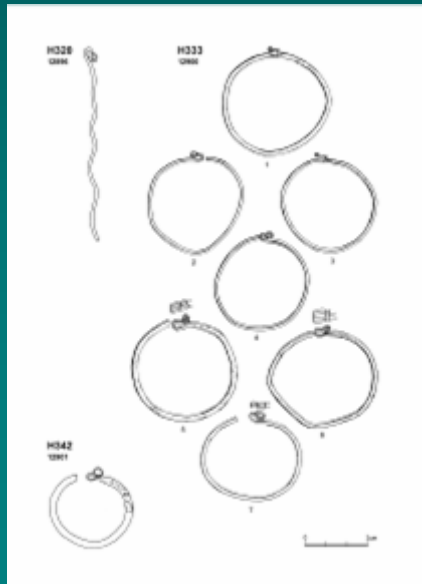
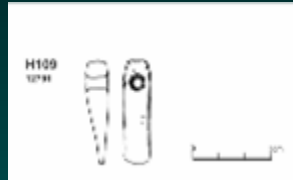
- the storey burials
- whole population
- the stone facing
- the wood facing (coffin?)
- the grave stones



The graves with the Early Medieval equipment (total 56)
Total number of the Early Medieval graves?

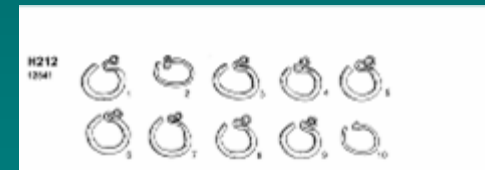
4 The burials

The Early Medieval equipment



S-shaped earrings - total number: 230
diameter size: from 10 mm to 50 mm
denarius of Vratislav II - 1061-1092, grave 17
denarius of Vratislav II - 1061-1092, grave 160
denarius of Vratislav II - 1061-1092, grave 169
denarius of Vladislav I - 1120-1125, grave 315

from the grave?:
denarius of Heinrich II - 955-976, Bayern
denarius of Vladislav II - 1140-1158, 1158-1174



5 Did the graveyard use an older settlement area?

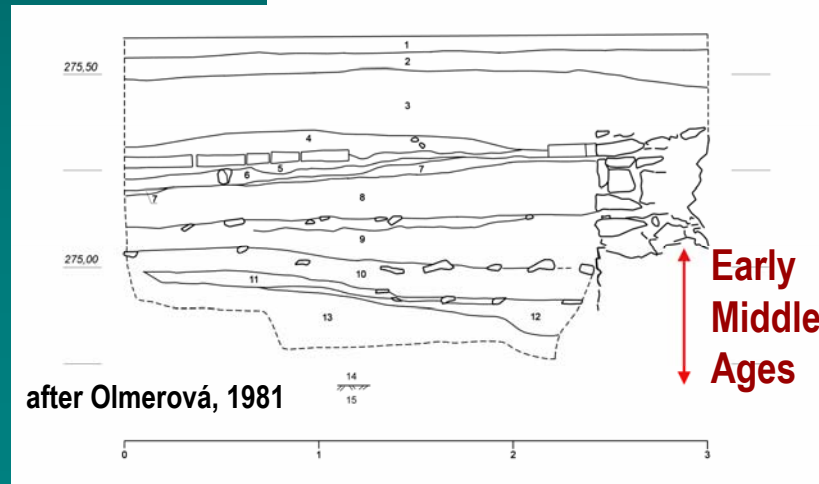
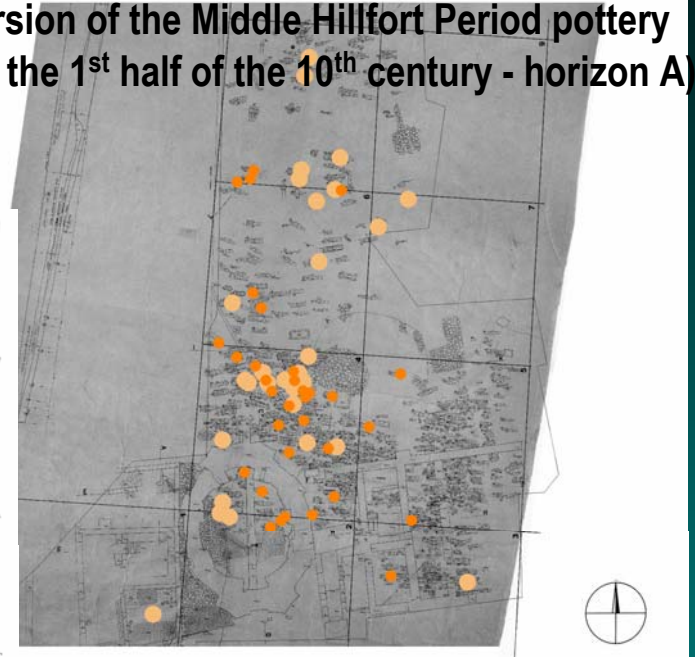
- the burials were embedded
in the Early Medieval settlement deposits

dispersion of the Middle Hillfort Period pottery
(up to the 1st half of the 10th century - horizon A)

remains of the Middle Hillfort settlement – horizon A



example of thee pottery of horizon B



- jednotlivé zlomky
- 3 a více zlomků

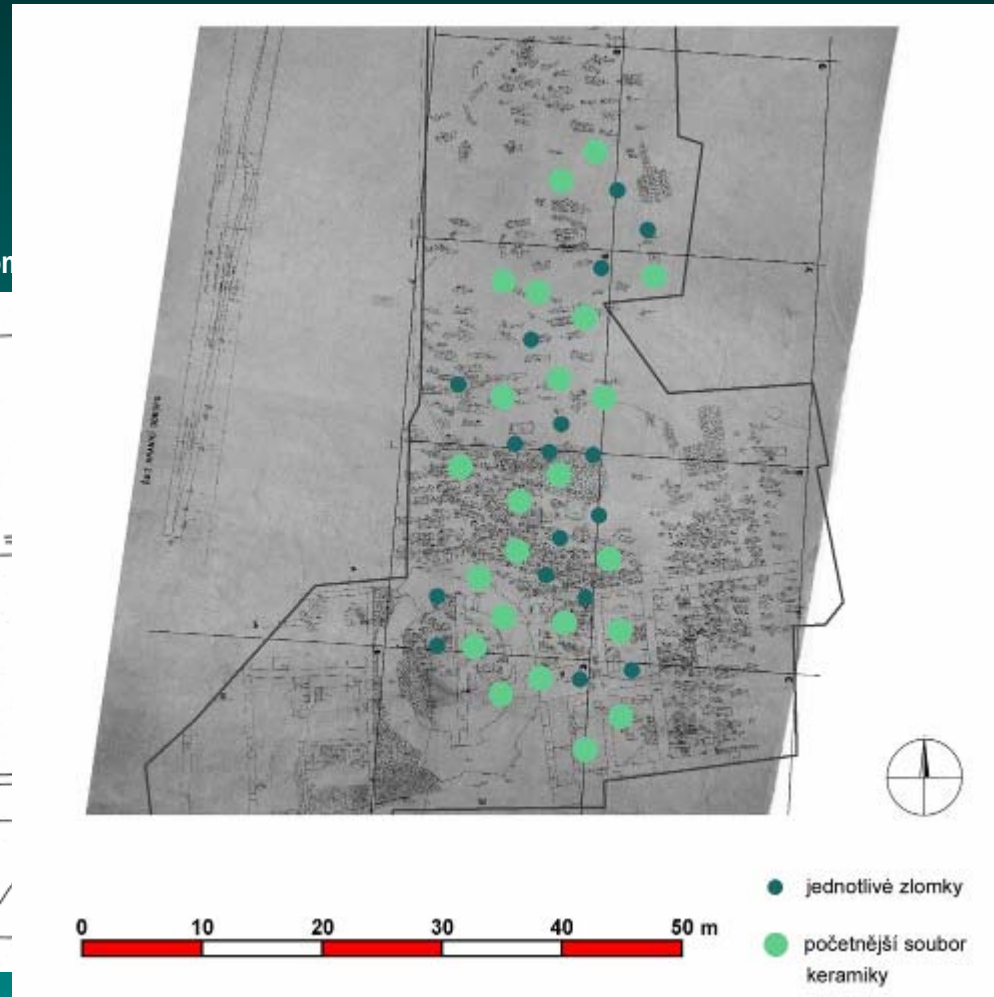
6 The graveyard reused as a settlement area



- the graveyard area was used from the end of the Late Hillfort Period as production area (horizon C-VS1: 12th - first half of the 13th century)
- the production and settlement area was reoccupied as a cemetery in the Middle and New Ages



the pottery from

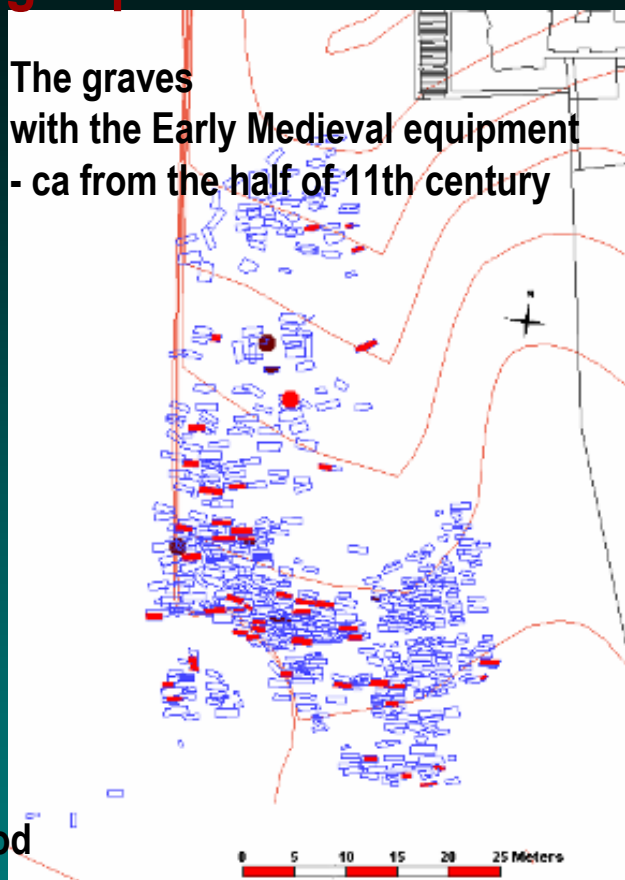


7 - Summary – The area of Loreta square in the Early Middle Ages period

The graves with the Early Medieval equipment - ca from the half of 11th century

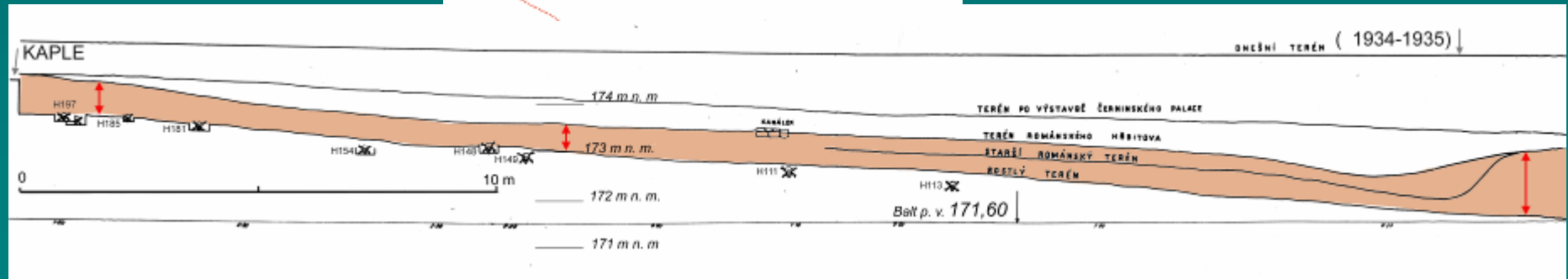
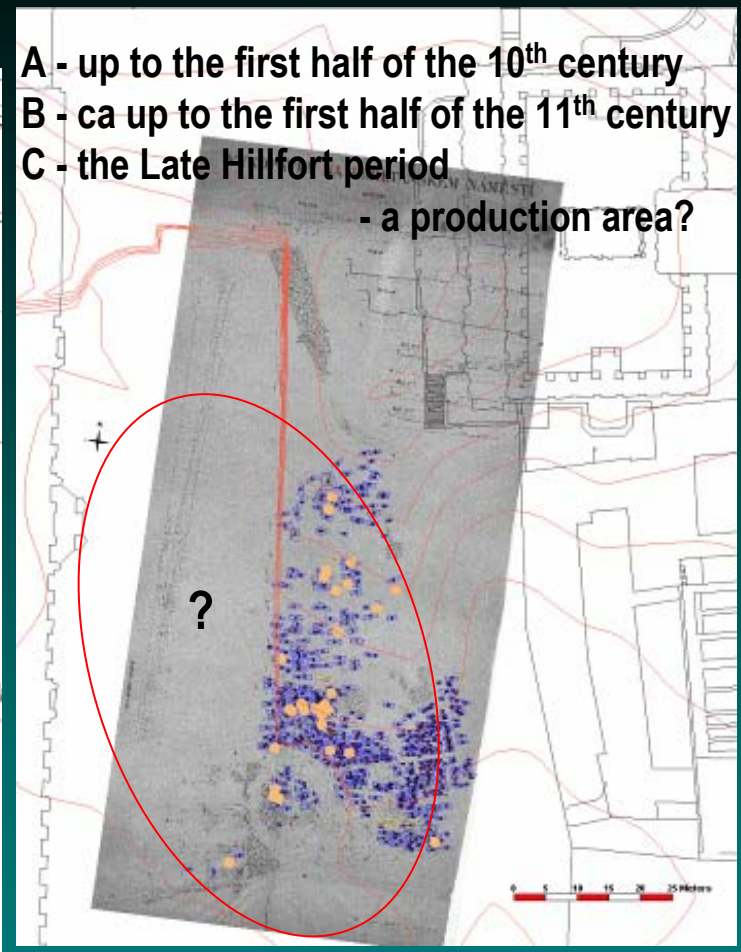


↑ the settlement horizon of the Early Middle Ages Period ↓



The horizons of the settlement

- A - up to the first half of the 10th century
- B - ca up to the first half of the 11th century
- C - the Late Hillfort period - a production area?



The burying and settlement areas in Prague in the 11th-12th century

- the time of the first cemeteries in the settlement area
- the first Churches cemeteries

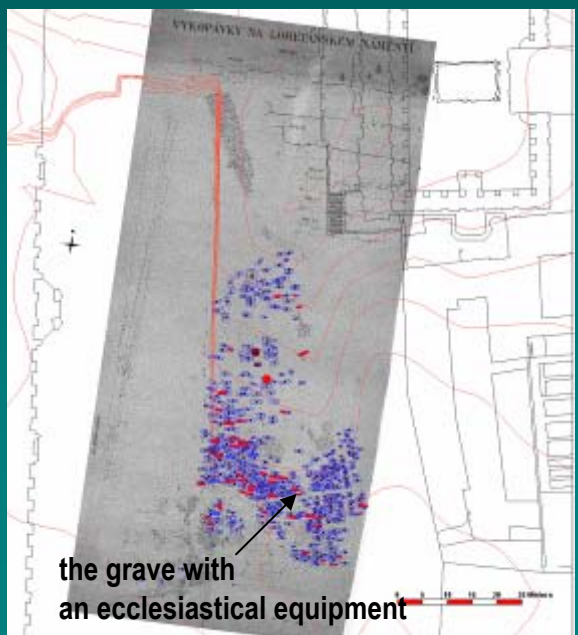
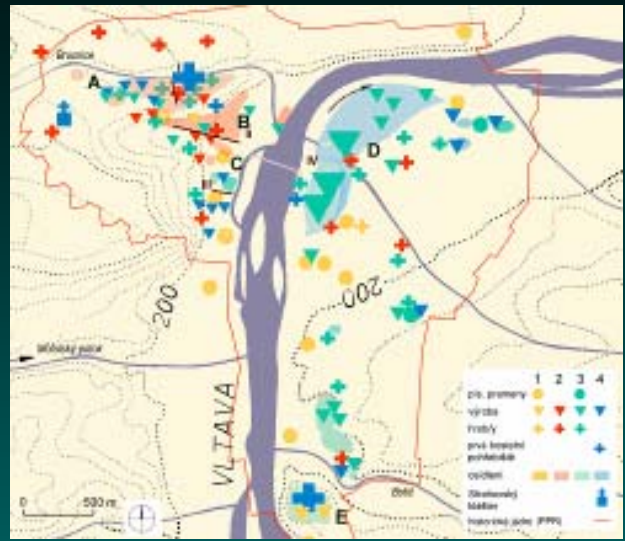
Loreta square - Graveyard or Church cemetery?

St Adalbert at Pohořelec settlement of the 14th century

„*primam a walva Hradczanensi in Strahowiam transuendo*“

The current questions of the Loreta sq. graveyard study:

- the importance and the function of the area in the proximity of the Prague Castle during the Early Middle Ages





Thank you for your attention