

Long-term woodland dynamics in Central Europe: from estimations to a realistic model

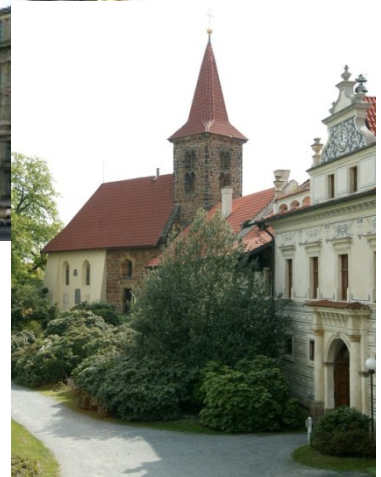
Péter Szabó

Institute of Botany of the ASCR, v. v. i.
Zámek 1, CZ - 252 43 Průhonice, Czech Republic
www.ibot.cas.cz



About myself

- Studied linguistics and history in Budapest
- Specialization in the Middle Ages, PhD in interdisciplinary medieval studies
- Research interest (woodland historical ecology) lies between *history*, *archaeology* and *ecology*
 - Department of Medieval Archaeology at ELTE, Budapest, Hungary
 - Institute of Botany of the Czech Academy of Sciences, Brno, Czech Republic



Disappearance and transformation of woodland since the Neolithic

Several neglected aspects:

- Woodland cover until ca. AD 1800 is inferred from population density
- Effects of traditional management on tree composition
- Focus on trees, although herbaceous vegetation is key to biodiversity

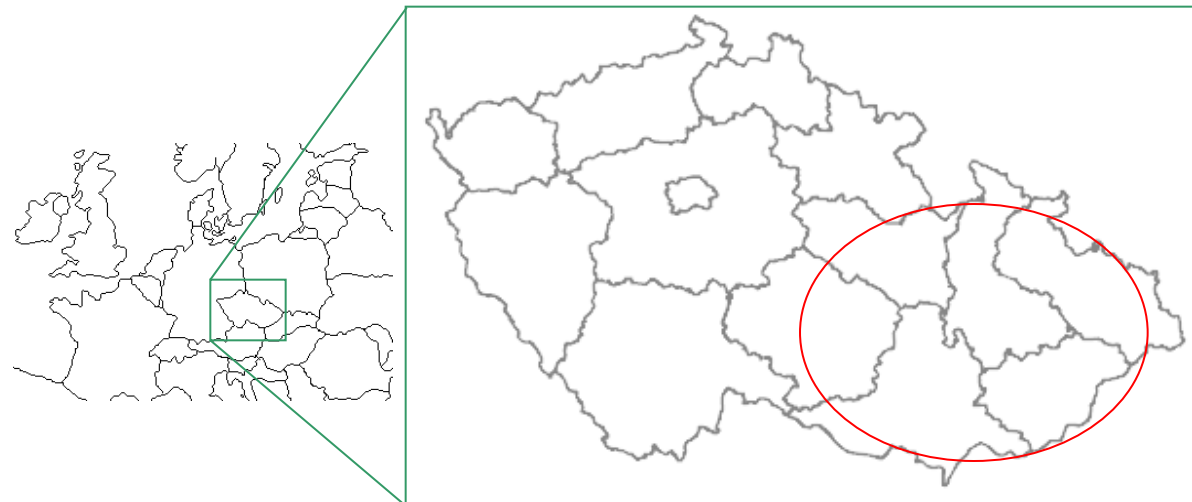
Two interconnected reasons:

- Lack of interdisciplinary cooperation
- Differences in scaling and resolution



Aims

- to combine historical, palaeoecological, vegetation ecological and archaeological data
- to build a complex model of long-term woodland dynamics in a well-defined, larger study region (Moravia) with the highest resolution possible
- to relate past patterns in the tree layer to patterns in the herb layer
- to analyze the role of humans in woodland dynamics

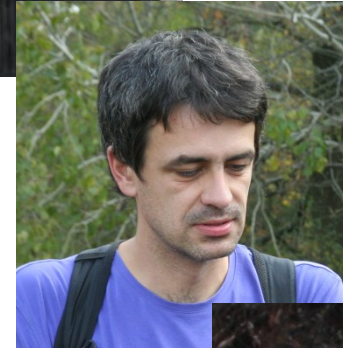


Research team

History: Péter Szabó

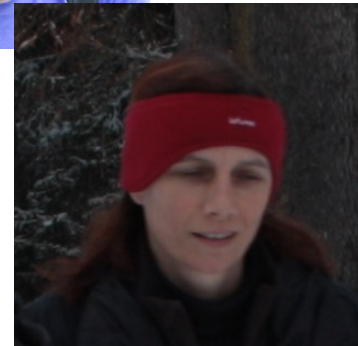


Palaeoecology: Petr Kuneš



Vegetation Ecology: Radim Hédli

GIS: Jana Müllerová



- young team:
average age 33.8 yrs
- balanced gender structure:
42% women, 58 % men



Preparation

Interdisciplinary project – fairly long preparation process

general outline by working group leaders → individual parts
→ detailed research plan → feedback from all involved →
updating → final version

Simultaneously: technical details, consultations, budget preparation

However: from the side of ERC straightforward and easy procedure!



Why (I think) we succeeded

Key point : *well thought out strategy* (find out what makes you special and focus on that)

- unusual and interdisciplinary
- right time: start of interdisciplinary projects
- good team (essential because of interdisciplinarity), good institutional background
- deliberate focus on novel aspects
- lot of effort put into presentation (interview crucial)

Good project and good CV are a must

(first round evaluation)



Novelty and potential

- Local studies – high resolution
Large-scale models – coarse resolution
- Interdisciplinarity
 - high quality in all disciplines
 - synergetic results
- Paradigm shift in ecology
- Practical application: nature conservation and forestry
- Larger region - unprecedented amount of sources - highest resolution possible



What helped me personally

- postgraduate education in international environment and in English
- good overview of general issues of interdisciplinarity
- historical ecology is very much an upcoming discipline

