

# Expression of Estrogen Receptor $\alpha$ and $\beta$ in Rat Astrocytes in Primary Culture: Effects of Hypoxia and Glucose Deprivation

M. D. AL-BADER<sup>1</sup>, S. A. MALATIALI<sup>1</sup>, Z. B. REDZIC<sup>1</sup>

<sup>1</sup>Department of Physiology, Faculty of Medicine, Kuwait University, Kuwait

Received March 3, 2011

Accepted September 1, 2011

On-line October 12, 2011

## Summary

Estrogen replacement therapy could play a role in the reduction of injury associated with cerebral ischemia *in vivo*, which could be, at least partially, a consequence of estrogen influence of glutamate buffering by astrocytes during hypoxia/ischemia. Estrogen exerts biological effects through interaction with its two receptors: estrogen receptor alpha (ER $\alpha$ ) and estrogen receptor beta (ER $\beta$ ), which are both expressed in astrocytes. This study explored effects of hypoxia and glucose deprivation (HGD), alone or followed by 1 h recovery, on ER $\alpha$  and ER $\beta$  expression in primary rat astrocyte cultures following 1 h exposure to: a) 5 % CO<sub>2</sub> in air (control group-CG); b) 2 % O<sub>2</sub>/5 % CO<sub>2</sub> in N<sub>2</sub> with glucose deprivation (HGD group-HGDG); or c) the HGDG protocol followed by 1 h CG protocol (recovery group-RG). ER $\alpha$  mRNA expression decreased in HGDG. At the protein level, full-length ER $\alpha$  (67 kDa) and three ER $\alpha$ -immunoreactive protein bands (63, 60 and 52 kDa) were detected. A significant decrease in the 52 kDa band was seen in HGDG, while a significant decrease in expression of the full length ER $\alpha$  was seen in the RG. ER $\beta$  mRNA and protein expression (a 54 kDa single band) did not change. The observed decrease in ER $\alpha$  protein may limit estrogen-mediated signalling in astrocytes during hypoxia and recovery.

## Key words

Astrocytes • Estrogen receptor • Hypoxia • Glucose deprivation • Ischemia • Brain

## Corresponding author

Z. Redzic, Department of Physiology, Faculty of Medicine, Kuwait University, P.O. Box 24923 Safat, 13110, Kuwait. Fax: +965 25338937. E-mail: redzic@hsc.edu.kw

## Introduction

Mild to moderate reduction in cerebral blood flow, as seen in the penumbra during transient focal cerebral ischemia or in the whole brain during hypoperfusion, could trigger events through several signaling pathways, including activation of AMP-activated protein kinases (Li and McCullough 2010), which could lead to apoptotic cell death (Hossmann 2008). A well established theory suggests a role for glutamate accumulation in the interstitial fluid (Mergenthaler *et al.* 2004), which binds to ionotropic receptors, causing an increase in Ca<sup>++</sup> entry into the cells (Broughton *et al.* 2009) and facilitating an accumulation of intracellular Ca<sup>++</sup> that triggers the intrinsic apoptotic pathway (Dirnagl *et al.* 1999). Thus, the amount of glutamate released in the early stages of an ischemic event could be of considerable importance in determining the extent of apoptotic cell death in the penumbra (Hertz 2008). Astrocytes play a key role in buffering extracellular glutamate during hypoxia/ischemia (Hertz 2008) because these cells have a considerable potential to take up glutamate from the extracellular space through the action of glutamate transporters (Chao *et al.* 2010) and can accumulate glutamate for a considerable time during an ischemic event (Haberg *et al.* 1998, 2001).

Estrogen can influence glutamate buffering by astrocytes during brain ischemia but the results are conflicting: administration of estrogen to rat astrocytes in primary culture significantly increased expression of glutamate transporters at mRNA and protein levels and this was accompanied by elevated l-glutamate uptake (Sato *et al.* 2003). However, another study revealed that estrogens down-regulate l-glutamate uptake activity of

astrocytes *via* membrane ER $\alpha$  (Billeci *et al.* 2008). Most studies support a role for estrogen replacement therapy in the reduction of ischemic brain injury (Billeci *et al.* 2008). Female gerbils experienced less severe brain damage following severe incomplete hemispheric ischemia produced by unilateral carotid occlusion than did male gerbils (Hall *et al.* 1991). Exogenous administration of 17 $\beta$ -estradiol reduces infarct volume following middle cerebral artery occlusion (MCAO) in ovariectomized female rats (Dubal *et al.* 1998, Rusa *et al.* 1999). Exogenous estradiol, when administered at the onset of MCAO, also showed to be protective in male rats (Toung *et al.* 1998). The doses of 17 $\beta$ -E2 used in these studies did not influence cerebral blood flow, implying that the neuroprotective effect of 17 $\beta$ -E2 occurs directly at the level of the brain rather than involving the vasculature (Rusa *et al.* 1999).

Estrogen regulates gene expression through interaction with estrogen receptor alpha (ER $\alpha$ ) and estrogen receptor beta (ER $\beta$ ), which are both expressed in the brain (Shughrue *et al.* 1997). ERs are selectively expressed in some types of neurons, like Purkinje cells (Ikeda and Nagai 2006) and inhibitory interneurons in hippocampus, but not in the pyramidal neurons or in granule cells (Prewitt and Wilson 2008). Estrogen interacts directly with apoptotic signalling processes in neurons (Meda *et al.* 2000). Astrocytes express both ER $\alpha$  (Huppmann *et al.* 2008, Bondar *et al.* 2009, Yi *et al.* 2009) and ER $\beta$  (Huppmann *et al.* 2008) receptors. However, no data exist so far regarding the responses of these receptors upon the conditions that mimic conditions during short cerebral ischemia and recovery. The aim of our study was to assess the expression of ER $\alpha$  and ER $\beta$  in rat astrocytes in primary culture at the transcript level, by real time-polymerase chain reaction (ReT-PCR), and at the protein level by immunoblotting and to explore changes in the expression of ER $\alpha$  and ER $\beta$  after 1 h HGD alone or followed by 1 hour recovery.

## Methods

This study was approved by the Medical Research Council of the Faculty of Medicine, Kuwait University. Animals were maintained and handled in the Animal House, Health Science Centre, and all procedures were conducted in accordance with the animal care guidelines in this institution and in accordance with the Guidelines on Laboratory Animal Care.

## Chemicals and solutions

Two days old female Sprague Dawley pups were used to initiate primary cultures of astrocytes; cortices from four pups were used to initiate primary cultures in four 25 cm<sup>2</sup> flasks or in four 6-well plates. The following solutions were used: (a) phosphate buffered saline (PBS), containing (mmol/l): NaCl 136.9, KCl 2.7, KH<sub>2</sub>PO<sub>4</sub> 1.5, Na<sub>2</sub>HPO<sub>4</sub> 7.7, pH 7.4; (b) tissue buffer, which was Ca<sup>++</sup> and Mg<sup>++</sup> free Hank's Balanced Salt Solution (GIBCO, Carlsbad, USA) containing (mmol/l) NaCl 140, KCl 5.4, Na<sub>2</sub>HPO<sub>4</sub> 0.67, KH<sub>2</sub>PO<sub>4</sub> 0.5, glucose 17, sucrose 12, HEPES 20 and penicillin/gentamicin 100 U/ml; pH 7.4; (c) Dulbecco's modified Eagle's medium (DMEM) containing 7 mM D-glucose, L-glutamine and Na<sup>+</sup>-pyruvate. This medium was prepared by adding an appropriate amount of a high glucose DMEM (GIBCO, catalogue number 11995-040) and 10 % (v/v) Fetal Calf Serum (FCS) (Invitrogen) to a low glucose DMEM (GIBCO, 11885-084); (d) low glucose, pyruvate-free DMEM, containing L-glutamine and 1.5 mM D-glucose, which was prepared by adding appropriate amount of a high glucose, pyruvate-free DMEM (Gibco, 31053-028) and 10 % FCS to a glucose and pyruvate free DMEM (Gibco, 11966-025). It also contained 10 mM 2-deoxy-glucose (2-DG) (Sigma), an analogue of D-glucose that cannot be metabolized beyond the 2-deoxy-glucose 6-phosphate, thereby competitively inhibiting glycolysis (e) homogenisation buffer, containing 10 mM Tris, 1.5 mM EDTA, 10 % (v/v) glycerol, 1  $\mu$ g/ml leupeptin, 100  $\mu$ g/ml bacitracin, and 1  $\mu$ g/ml pepstatin.

Reverse-transcription PCR buffers, enzymes and reagents were supplied by Invitrogen. Real time PCR (ReT-PCR) reagents were purchased from Applied Biosystems, USA. A rabbit polyclonal antibody that recognized a peptide corresponding to amino acids 1-150 of human ER $\beta$  (H-150; Santa Cruz Biotechnology, Inc., CA, U.S.A.), which cross-reacts with rat ER $\beta$  (Qiu *et al.* 2005) and a mouse monoclonal anti-ER $\alpha$  raised against the amino acid residues 151-165 of human ER $\alpha$  (MAB463, Millipore, Ann Arbor, MI, U.S.A.) that cross-reacts with rat ER $\alpha$  (Ali *et al.* 1993, Jesmin *et al.* 2002) were used. For the detection of actin, a mouse monoclonal IgG1 anti-human actin antibody was used (Millipore, USA). PVDF membranes were obtained from Amersham Biotech (Buckinghamshire, UK). General laboratory chemicals were purchased from Merck (Dagenham, U.K.) and all fine chemicals were obtained from Sigma (Poole, U.K.).

#### *Treatment of animals, tissue extraction and initiation of culture*

A total of thirty 1-2 day old Sprague-Dawley rats were used in this study. Efforts were made to reduce the number of animals used and to minimize animal suffering. Rats were sacrificed by cervical dislocation, skull was opened, dura mater was dissected and brain immersed in ice-cold tissue buffer. The remaining meninges and choroid plexuses were carefully removed from brain surface under a magnifying glass, cerebral cortices were separated and the white matter carefully removed. The remaining cortices were kept in tissue buffer on ice.

Primary cultures were produced as described earlier (Dolman *et al.* 2005). Briefly, the isolated tissue was incubated into warm (37 °C) tissue buffer containing 0.25 % trypsin (Gibco) for 30 min. Trypsin was inactivated by adding a serum-containing DMEM, tissue was triturated through a pipette tip for 1 min and the cell suspension was filtered through 80 micron cell strainer (BD Falcon, San Jose, USA). The cell suspension was centrifuged at 600 x g for 5 min, the pellet was re-suspended in DMEM and placed in 25 cm<sup>2</sup> cell culture flasks (Nunc, Rochester, NY, USA) pre-treated with poly-L-lysine (0.01 %) for 15 min. The cell cultures were incubated at 37 °C in water saturated air with 5 % CO<sub>2</sub> and medium was changed every 2 days.

Primary cultures were purified as described by Rist *et al.* (1997). Briefly, at sub-confluence, cell contaminants on the top of the monolayer were separated from astrocytes by shaking for 24 h at 110 rpm at 37 °C on a Stuart mini orbital shaker (Stuart Scientific, Stone, U.K.) at 37 °C. Further purification of the cell cultures was achieved at confluence (day 11-12 after plating) by adding cytosine arabinoside (0.01 mM) to the culture medium for 3-4 days. Since at this stage astrocytes reach confluence, they do not divide further, so cytosine arabinoside affects only contaminating dividing cells and no effects of this treatment on astrocytes morphology could be observed under the phase contrast microscopy, which was in agreement with the results reported before (Rist *et al.* 1997). Cells were used for experiments 18-20 days after seeding. It has been shown earlier that this procedure produces astrocytes primary cultures, with reported purity of >90 % (Rist *et al.* 1997) and >95 % (Romero *et al.* 1995), which was estimated counting cells that were stained with antibodies for glial fibrillary acidic protein (GFAP) (Romero *et al.* 1995, Rist *et al.* 1997) and high expression of GFAP mRNA (Dolman *et al.* 2005).

#### *Treatment of the cells and experimental groups*

In this study primary cultures were divided into three experimental groups: control group (CG): primary cultures were incubated in DMEM and exposed to 5 % CO<sub>2</sub> in air during the course of experiment; hypoxia and glucose deprivation (HGDG) group: primary cultures were transferred into a handmade transparent glove-box chamber (manufactured in the Health Science Centre workshop) with 2 % O<sub>2</sub>, 5 % CO<sub>2</sub> in N<sub>2</sub>; the composition of gases was constantly monitored by a NormcapOxy gas analyzer (Datex-Ohmeda, GE Health Care); cultures were washed with PBS and low glucose, pyruvate-free DMEM with 10 mM 2-DG was added to primary cultures. Cells were kept under these conditions for 1 h. All solutions were kept in the chamber for 12 h prior to experiments in order to equilibrate gases; recovery groups (RG): primary cultures were exposed to the same protocol as described for the HGDG and then were exposed to the same conditions as flasks from the CG for 1 h.

#### *Expression of ER $\alpha$ and ER $\beta$ at the transcript level*

##### *RNA extraction and reverse transcription*

At the end of each protocol, total RNA was extracted with Trizol (Invitrogen) and dissolved in diethylpyrocarbonate-treated water at 55 °C. RNA concentrations were determined by absorbance at 260 nm and 2  $\mu$ g portions were used for reverse transcription. Intron-spanning primers were used in the study that excluded interference from genomic DNA in the results; however, all RNA samples were treated with DNAase, 4 units/sample (Invitrogen, Carlsbad, USA) prior to reverse transcription. Two  $\mu$ g portions were used for first-strand cDNA synthesis, which was performed with MuMLV reverse transcriptase (Invitrogen) using random hexamers, according to the manufacturer's instructions (RT+ samples). Negative controls (RT- samples) were processed under the same conditions, with the reverse transcriptase replaced with water.

##### *Real-time PCR*

The ReT-PCR reaction was carried out in a ReT-PCR system (Applied Biosystems, model 7500), using the following gene expression assays, which had intron-spanning primers and hydrolysis probes labeled with 6-carboxyfluorescein (FAM) as a reporter dye and 6-carboxy-tetramethyl-rhodamine (TAMRA) as a quencher dye: assay ID Rn01430446\_m1, expected amplicon length 73 bp for ER $\alpha$ , assay ID Rn00562610\_m1, expected amplicon length 89 bp for

ER $\beta$  and assay ID Hs9999901-sl, expected amplicon length 187 bp for 18S ribosomal RNA. The PCR reactions were prepared using the TaqMan universal master mix (Applied Biosystems) and were carried out in a 96-well plate that was sealed with an adhesive transparent foil, employing the thermal profile that was suggested by the manufacturer: 2 min at 50 °C (1 cycle); 10 min at 95 °C (1 cycle) and then 15 s at 95 °C and 1 min at 60 °C for 40 cycles. In some cases, a 10  $\mu$ l sample of the PCR product was analyzed by electrophoresis on a 2 % agarose gel that contained ethidium bromide in order to verify that product sizes were as expected.

In some cases, a series of dilutions of cDNA was made (2-64 folds) and then ReT-PCR reactions were carried out as outlined above. The obtained Ct values for ER $\alpha$ , ER $\beta$  and 18S were then plotted against the log dilution and the coefficient of linearity and the slope were calculated and efficiencies of the PCR were estimated using the following equation (Pfaffl 2001):

$$E = 10^{-1/\text{slope}} \quad (1)$$

Under theoretically ideal circumstances, in every PCR cycle the amount of product should be doubled giving the ideal efficiency of 2.00.

The relative gene expression was calculated using the efficiency corrected calculation model for multiple samples and based on one reference gene (Pfaffl 2001). All samples were done in duplicates and the  $\Delta$ Ct value for each sample was determined by subtracting the average 18S Ct value from the average ER $\alpha$  or ER $\beta$  Ct value. The fold change was then calculated as:

$$\text{Ratio} = \frac{(E_{\text{target}})^{\Delta\text{Ct}(\text{control-sample})}}{(E_{\text{reference}})^{\Delta\text{Ct}(\text{control-sample})}} \quad (2)$$

This equation expresses fold change (ratio) of ER genes in the HGDG and RG versus the CG in comparison to the 18S gene.  $E_{\text{target}}$  and  $E_{\text{reference}}$  are the efficiencies of target and reference gene transcripts, respectively. In every experiment, 3 flasks for the same batch were exposed to experimental protocols (one in each group: CG, HGDG, RG); the ratio was calculated for the HGDG, RG; finally, the average fold change  $\pm$  S.D. in the HGDG and the fold change in the RG (both relative to the CG) were calculated from 3-4 different batches using the equation 2.

#### *Expression of ER $\alpha$ and ER $\beta$ at the protein level*

Cellular monolayers from CG, HGDG and RG were washed twice with ice-cold saline, detached from the surface by Trypsin-EDTA solution and then homogenized in ice-cold homogenization buffer using a Polytron homogenizer, to yield a 5 % (w/v) homogenate.

Twenty  $\mu$ g of protein was loaded per lane, and separated using 7.5 % SDS-PAGE. The monoclonal ER $\alpha$  antibody was used at a dilution of 1:500 in 10 % non-fat dry milk in Tris Buffer Saline-Tween20 (TBS-T, containing 20 mM Tris, 137 mM NaCl, pH 7.6 and 0.1 % v/v Tween20), the polyclonal ER $\beta$  antibody was used at a dilution of 1:100 in 10 % non-fat dry milk in TBS-T and the anti-actin antibody was used at a dilution of 1:50,000 in 5 % non-fat dry milk in TBS-T. Western blot analysis and immunodetection of total ER proteins together with analysis of protein sizes was performed as described earlier (Al-Bader *et al.* 2008). In preliminary experiments, the primary antibody was omitted and filters were incubated with secondary antibody only. No bands were detected with this antibody. Once membranes were probed with the ER antibodies, they were stripped and re-probed with anti-actin antibody.

#### *Statistical analysis*

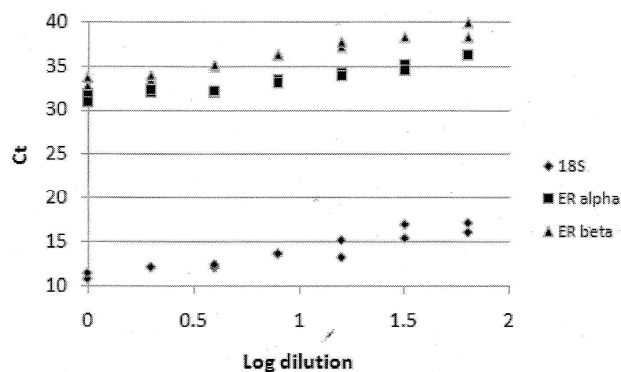
Data was tested for statistical significance using unpaired T-test (Epicalc 2000). In some cases, as indicated in the Results section, a difference between the obtained Ct values in experimental groups was tested by ANOVA.

## **Results**

#### *Effect of hypoxia and glucose deprivation, and recovery on the expression of ERs at the transcript level*

A plot of log dilution against the Ct values for each pair of primers is shown in Figure 1. Those data points revealed a linear increase of Ct values with the Pearson's coefficient  $r$  being 0.81, 0.85 and 0.82 for ER $\alpha$ , ER $\beta$  and 18S ribosomal RNA, respectively. The slopes of the corresponding lines were estimated and the PCR efficiencies, calculated using equation 1, were 2.48, 2.03 and 1.93 for ER $\alpha$ , ER $\beta$  and 18S ribosomal RNA respectively.

Table 1 shows the estimated average Ct values of ERs in rat astrocytes in the CG, HGDG group and RG. The Ct values in all negative controls (RT- samples) were above 40 (not shown). Initially, three housekeeping genes were used: glyceraldehyde 3-phosphate dehydrogenase,



**Fig. 1.** Validation of the method for fluorescence-based quantitative real-time PCR. Titration curves were obtained by using cDNA to create a series of dilutions, from 1X (no dilution) to 64 X dilution. Then the quantitative real-time PCR was run and log dilutions plotted against the obtained quantification cycle (Ct) values. Each Ct value was estimated as an average from 2 replicates and each point in the Figure represents mean  $\pm$  S.E. from 3 separate cDNA samples. These data were also used to estimate the efficiency (E) of the reaction for each gene of interest.

beta actin and 18S ribosomal RNA. There was no significant difference in the obtained Ct values between the CG, HGDG and RG for either of those genes ( $p > 0.05$  by ANOVA); however, the intra-essay and inter-essay variability, calculated for each gene as explained by Pfaffl (2001), revealed that 18S ribosomal RNA had the most consistent expression in all experimental groups. Therefore, this RNA was used for calculations of the relative expression of ER mRNAs and the Ct values in RT+ samples are shown in Table 1.

There are several splice variants of ER $\alpha$  mRNA in primates and mice, but no known splice variants in the rat brain; there are four known splice variants of ER $\beta$  in the rat brain: ER $\beta$ 1, ER $\beta$ 2, ER $\beta$ 1 $\delta$ 3, and ER $\beta$ 2 $\delta$ 3 (Petersen *et al.* 1998, Price *et al.* 2000). However, there were no splice variants or single-nucleotide

polymorphism positions documented in transcript and single-nucleotide polymorphism databases in the regions of the genes corresponding to the portions of the cDNA to be amplified in this study according to the ENSEMBL entries. Thus, use of intron-spanning primers could not affect the quantification data in this study.

The obtained data from the CG indicated that mRNAs encoding ER $\alpha$  and ER $\beta$  were  $10^4$  and  $10^6$  fold less abundant than 18S ribosomal RNA, respectively and that mRNA encoding ER $\beta$  was  $\sim 10^2$  fold more abundant than mRNA encoding ER $\alpha$ . The obtained fold-change values indicated that HGD protocol caused a 50 % decrease in the amount of mRNA for ER $\alpha$ , when compared to the CG, while the amount of mRNA for ER $\beta$  did not change. In the RG, the amount of mRNAs for ER $\alpha$  and for ER $\beta$  did not change when compared to the CG.

#### *Effect of hypoxia, glucose deprivation and recovery on the expression of ERs at the protein level*

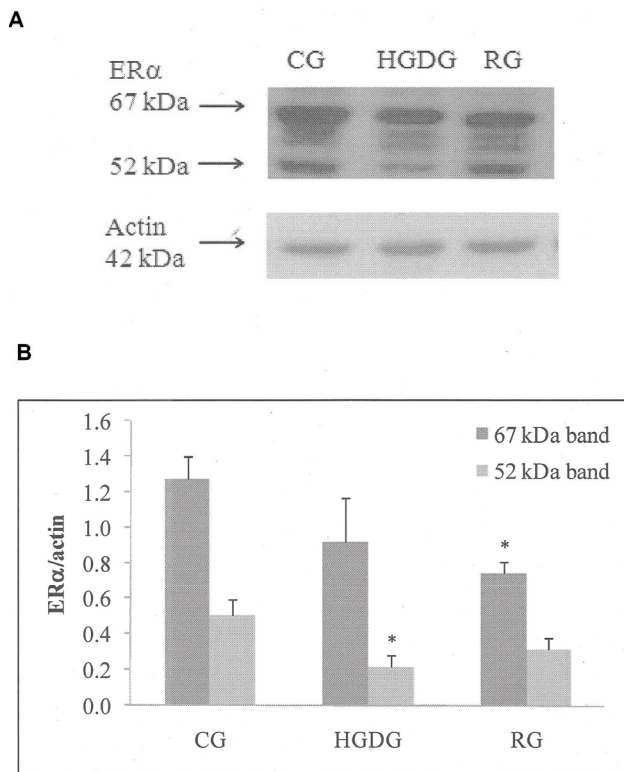
Immunoblots of the astrocyte protein extracts revealed the presence of ER $\alpha$  and ER $\beta$  at the protein level. Rat beta actin, which was used as an internal control and to prove equal loading of protein samples, migrated with mobility comparable to an apparent size of 42 kDa (Fig. 2A).

In addition to the full length ER $\alpha$ , three splice variants (so-called ER $\alpha$ -immunoreactive proteins) have been detected in rat earlier; they migrated during electrophoresis with apparent molecular weights from  $\sim 50$  kDa to  $\sim 65$  kDa (Pasqualini *et al.* 2001). This finding was also confirmed in later studies that detected that ER $\alpha$  in the rat brain and in astrocytes existed as the full length ER $\alpha$  (apparent MW 66-67 kDa) and at least one ER $\alpha$ -immunoreactive protein with apparent MW of 52

**Table 1.** Expression of ER $\alpha$  and ER $\beta$  in rat astrocytes in primary culture and the effects of hypoxia and glucose deprivation treatment and recovery on that expression.

	CG		HGDG		RG	
	Ct $\pm$ S.E.	E <sup>-Ct</sup> $\pm$ S.E. (x 10 <sup>12</sup> )	Ct $\pm$ S.E.	Fold change	Ct $\pm$ S.E.	Fold change
18S	12.99 $\pm$ 0.03	195.99 $\pm$ 3.35 x10 <sup>6</sup>	13.62 $\pm$ 0.68		13.04 $\pm$ 0.02	
ER $\alpha$	29.63 $\pm$ 0.43	2.5 $\pm$ 0.9	30.69 $\pm$ 0.33	0.49 $\pm$ 0.15	28.81 $\pm$ 0.12	0.95 $\pm$ 0.28
ER $\beta$	31.55 $\pm$ 0.47	238 $\pm$ 88	31.57 $\pm$ 1.11	1.58 $\pm$ 0.38	30.74 $\pm$ 0.40	1.40 $\pm$ 0.83

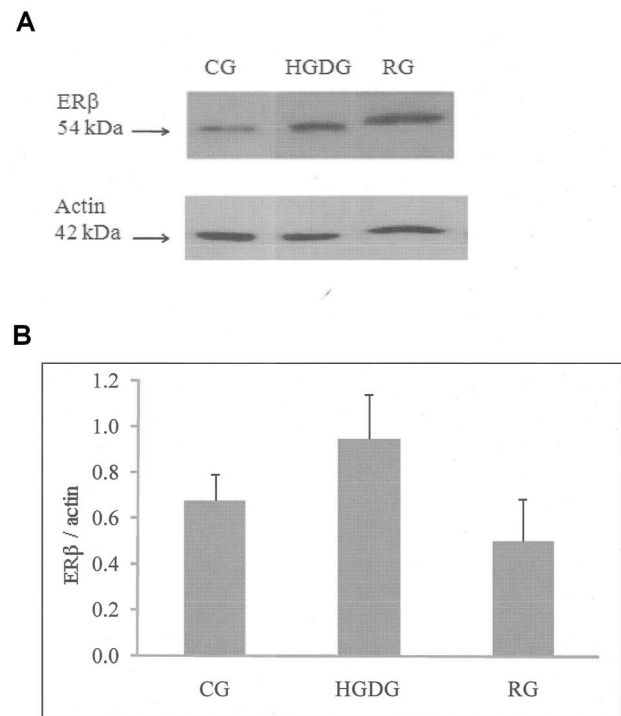
Data were obtained from 3-4 different samples for ER $\alpha$  and ER $\beta$  and from 6-8 samples for 18S RNA; each sample represented cDNA from one flask. Ct value for a sample was calculated as average from 2 replicates of one sample and  $\Delta$ Ct values for genes of interest and for the housekeeping gene were estimated. The linear form of the Ct values was corrected for the reaction efficiency, and is presented as E<sup>-Ct</sup>. The Ct values were used to estimate the fold change in the target genes for each sample (see the Method section), normalized to 18S ribosomal RNA and relative to the expression in the control group and the fold change values are presented as mean  $\pm$  S.D.



**Fig. 2.** Expression of ER $\alpha$  protein in rat astrocytes. A mouse monoclonal anti-ER $\alpha$  antibody raised against the amino acid residues 151-165 was used; 20  $\mu$ g of protein was loaded on 7.5 % SDS-polyacrylamide gels. **(A)** Representative Western blot for ER $\alpha$  and actin; the calculated size of the band is indicated on the left-hand side of the gel. Bands corresponding to ~67 kDa and 52 kDa molecular weight were detected for ER $\alpha$ . **(B)** Protein expression profile: ER $\alpha$  protein was expressed relative to actin. Results shown are mean  $\pm$  S.E.M. ( $n \geq 3$ ); there was a significant decrease in the expression of the 67 kDa band between CG and RG ( $p=0.01$ ) and a significant decrease in expression of the 52 kDa band between CG and HGDG ( $p < 0.05$ ).

kDa (Bondar *et al.* 2009). In our study, immunoblotting using primary antibodies against ER $\alpha$ , revealed presence of two major bands in astrocytes that corresponded to the full length ER $\alpha$  (~67 kDa band) and a 52 kDa ER $\alpha$ -immunoreactive protein (Fig. 2A). In addition to those, two minor ER $\alpha$ -immunoreactive protein bands that migrated with apparent MW of ~60 kDa and 63 kDa were also detected. HGD protocol caused a significant decrease in the expression of the 52 kDa band compared to the expression in the CG (Fig. 2B), while the expression of other bands did not change significantly. In the RG 1 h there was a significant decrease in the expression of 67 kDa band when compared to the expression in the CG ( $p < 0.05$ ), while the expression other bands did not change.

The predicted MW of a wild type ER $\beta$  was 54 kDa; when primary antibodies against ER $\beta$  were used, presence of a single band that migrated with an apparent



**Fig. 3.** Expression of ER $\beta$  protein in rat astrocytes. A rabbit polyclonal antibody corresponding to amino acids 1-150 was used; 20  $\mu$ g of protein was loaded on 7.5 % SDS-polyacrylamide gels. **(A)** Representative Western blot for ER $\beta$  and actin; the calculated size of the band is indicated on the left-hand side of the gel. One band of apparent molecular weight of 54 kDa was detected for ER $\beta$ . **(B)** Protein expression profile: density of the ER $\beta$  protein bands were expressed relative to density of the beta actin bands. Results shown are mean  $\pm$  S.E.M. ( $n \geq 3$ ); no significant change in protein expression was detected.

size of 54 kDa was detected. However, it appears that HGD and recovery protocols did not affect expression of this protein, since the density of this band, relative to density of actin bands, did not differ between HGDG/RG and the CG (Fig. 3B).

## Discussion

Experimental conditions used in this study, hypoxia and glucose deprivation mimic, at least partially, conditions that may occur during hypoperfusion in the brain (i.e. in the penumbra during focal cerebral ischemia or during a transient global cerebral ischemia, like hypotension). Using the same *in vitro* model, it has been shown that there was ~50 % depletion in cellular ATP in the HGDG after 1 h, which partially reversed after 1 h recovery; also there was an increase in ATP and adenosine concentration in the cell culture medium, while cell viability did not change and apoptosis was generally rare (Redzic *et al.* 2010).

This study revealed that amount of mRNA for both ER $\alpha$  and ER $\beta$  in astrocytes in the CG was low, giving the Ct values of  $\sim 30$ , with mRNA for ER $\beta$  being about  $10^2$  fold more abundant than mRNA for ER $\alpha$ . This may indicate a low turnover rate of ERs in astrocytes and is in accordance with a finding that ERs' mRNAs are expressed at very low abundance in rodent neurons (Wilson *et al.* 2008). It has been shown that deletion of ER $\alpha$  (in ER $\alpha$  knockout mice) abolished the protective actions of estradiol in the brain during permanent cerebral ischemia; while in the absence of ER $\beta$  (in ER $\beta$  knockout mice) the ability of estradiol to protect brain injury during permanent cerebral ischemia was preserved (Dubal *et al.* 2001). Following brain ischemia ER $\alpha$  was reactivated in rat neurons after 3-6 hours (Dubal *et al.* 2006). This expression pattern of ER gene expression could be a compensatory mechanism to prevent cell death (Wilson and Westberry 2009). This study revealed changes in the ER $\alpha$  mRNA, which decreased after 1 h HGD protocol, so it was less abundant in the HGDG than in the CG, while no change in the expression of ER $\beta$  was observed; after the recovery period the amount of mRNA for ER $\alpha$  in was not different from the amount in the CG.

For ER $\alpha$  and  $\beta$ , a number of variant transcripts have been described (Kuo *et al.* 2009). However, many of these transcripts are created by skipping internal exons, so they retain the same reading frame as the full-length transcript; thus, only few corresponding variant proteins have been detected (Taylor 2010). It has been shown previously, using anti-full length ER $\alpha$  antibodies, that ER $\alpha$  protein existed in rat as full length protein and three splice variants with MW ranging from  $\sim 50$  to  $\sim 65$  kDa (Pasqualini *et al.* 2001). We found in this study that ER $\alpha$  protein existed in astrocytes as the full length ER $\alpha$ , which migrated with apparent MW 67 kDa, and an ER $\alpha$ -immunoreactive protein, which migrated with apparent MW of 52 kDa and as two additional splice variants, which migrated with apparent MWs of 60 and 63 kDa. It was believed initially that ERs were purely nuclear receptors, but it was found that 5-10 % of total cellular ERs existed as proteins with various amount palmitoylated cysteine residues in the plasma membrane and that these proteins mediate membrane-initiated steroid signaling (MISS). MISS depends on coactivation of metabotropic glutamate receptors, causing estradiol-induced calcium influx (Kuo *et al.* 2009). However, only the full-length ER could bind estradiol and trigger MISS causing increased calcium influx (Bondar *et al.* 2009). This study showed that 1 h HGD protocol did not affect

the amount of the full length ER $\alpha$ ; however, after 1 h recovery, the level of this protein was significantly reduced when compared to control. Since it is believed that estrogen signaling could be protective during cerebral ischemia/hypoxia, our finding indicates a possibility that estrogen could exert limited protective effects on astrocytes during short the recovery phase because of the reduced amount of the full length ER $\alpha$ . HGD protocol caused significant reduction in the level of a 52 kDa ER $\alpha$ -immunoreactive protein, which is likely to be a splice variant of the full length ER $\alpha$ . Also, this protein could be a proteolytic/degradation product, although in this study, every precaution was taken to prevent degradation of proteins, so all procedures were performed at 4 °C and in the presence of several protease inhibitors.

Little is known about the molecular mechanism that could be involved in a change of ER $\alpha$  expression during HGD and recovery treatments. Hypoxia can alter the amount of mRNA for various proteins *via* hypoxia inducible factor-1 (HIF-1), so a hypothesis could be established that the observed changes in ER $\alpha$  could be HIF-mediated. HIF-1 $\alpha$  is not found in astrocytes under normoxic conditions due to ubiquitin-proteasomal degradation; however, it was shown that the lack of oxygen stabilizes the  $\alpha$ -subunit of the transcription factor HIF-1 *via* inhibition of its degradation. Thus, the level of HIF-1 $\alpha$  in astrocytes in culture increased after oxygen deprivation (Karovic *et al.* 2007). HIF-1 binds to the *cis*-elements within target genes that include several growth factors, such as erythropoietin (Semenza 2007). There are two possible mechanisms that could link HIF-1 to the ER $\alpha$  downregulation. First, HIF-1 interacts with ER $\alpha$  and this interaction down-regulates the ER $\alpha$  transcriptional activity (Cho *et al.* 2005) but had no effect on ER $\beta$  transcriptional activity (Yi *et al.* 2009), which appears to be in accordance with the finding that there was no change in the amount of ER $\beta$  mRNA in the HGDG. Second, it has been shown that insulin receptor substrate-2 (IRS-2) is phosphorylated on tyrosine following treatment of cells with erythropoietin (Verdier *et al.* 1997), an action which was believed to mimic the effects of insulin. It is known that cell signalling *via* insulin receptor or and epidermal growth factor receptor can decrease ER $\alpha$  mRNA expression (Wilson and Westberry, 2009), which is consistent with findings of this study.

However, due to a short period of HGD and recovery treatments in this study, a decrease in the ER $\alpha$  at the protein level is likely to be due to degradation of

existing ER $\alpha$ , rather than to a reduction in mRNA and a consequent reduction in ER $\alpha$  translation. It has been shown that hypoxia induced proteasome-dependent downregulation of ER $\alpha$  (Cho *et al.* 2006) and direct repression of ER which has been shown in breast cancer cell lines following hypoxia (Cho *et al.* 2005). Also, it has been shown that ER $\alpha$  is degraded in response to hypoxia and estradiol *via* a proteasome pathway, which was not seen for the ER $\beta$  (Yi *et al.* 2009). These data support a hypothesis that a downregulation of ER $\alpha$  at the transcript and at the protein level, which was observed in this study, was induced by HIF-1 -mediated pathways.

Estrogen signalling increased expression of glutamate transporters GLT-1 and GLAST on the mRNA and protein level in rat astrocytes through binding to nuclear estrogen receptors, a process which was accompanied by an increase in glutamate uptake (Pawlak

*et al.* 2005). Therefore, a downregulation in ER $\alpha$  during HGD protocol could be one of the possible reasons for an observed reduced ability of astrocytes to take up glutamate *via* a Na<sup>+</sup>-dependent mechanism during hypoxia (Dallas *et al.* 2007).

### Conflict of Interest

There is no conflict of interest.

### Acknowledgements

The authors acknowledge the technical assistance of Dr. S. S. Mohan, Mrs. L. Jacob and Mrs. A. Al-Farhan. We acknowledge help of Dr. James Craig, Department of Biochemistry, in improving manuscript style and clarity. Financial support for this study was provided by Kuwait University Grant No MY01/08.

### References

- AL-BADER MD, EL-ABDALLAH AA, REDZIC ZB: Ontogenic profile of estrogen receptor alpha and beta mRNA and protein expression in fetal rat brain. *Neurosci Lett* **440**: 222-226, 2008.
- ALI S, LUTZY, BELLOCQ JP, CHENARD-NEU MP, ROUYEN R, METZGER D: Production and characterization of monoclonal antibodies recognising defined regions of the human oestrogen receptor. *Hybridoma* **12**: 391-405, 1993.
- BILLECI AM, PACIARONI M, CASO V, AGNELLI G: Hormone replacement therapy and stroke. *Curr Vasc Pharmacol* **6**: 112-123, 2008.
- BONDAR G, KUO J, HAMID N, MICEVYCH P: Estradiol-induced estrogen receptor-alpha trafficking. *J Neurosci* **29**: 15323-15330, 2009.
- BROUGHTON BR, REUTENS DC, SOBEY CG: Apoptotic mechanisms after cerebral ischemia. *Stroke* **40**: e331-e339, 2009.
- CHAO XD, FEI F, FEI Z: The role of excitatory amino acid transporters in cerebral ischemia. *Neurochem Res* **35**: 1224-1230, 2010.
- CHO J, BAHNA J, PARK M, AHN W, LEE YJ: Hypoxic activation of unoccupied estrogen-receptor-alpha is mediated by hypoxia-inducible factor-1 alpha. *J Steroid Biochem Mol Biol* **100**: 18-23, 2006.
- CHO J, KIM D, LEE S, LEE Y: Cobalt chloride-induced estrogen receptor alpha down-regulation involves hypoxia-inducible factor-1alpha in MCF-7 human breast cancer cells. *Mol Endocrinol* **19**: 1191-1199, 2005.
- DALLAS M, BOYCOTT HE, ATKINSON L: Hypoxia suppresses glutamate transport in astrocytes. *J Neurosci* **27**: 3946-3955, 2007.
- DIRNAGL U, IADECOLA C, MOSKOWITZ MA: Pathobiology of ischaemic stroke: an integrated view. *Trends Neurosci* **22**: 391-397, 1999.
- DOLMAN D, DRNDARSKI S, ABBOTT NJ, RATTRAY M: Induction of aquaporin 1 but not aquaporin 4 messenger RNA in rat primary brain microvessel endothelial cells in culture. *J Neurochem* **93**: 825-833, 2005.
- DUBAL DB, KASHON ML, PETTIGREW LC, REN JM, FINKLESTEIN SP, RAU SW, WISE PM: Estradiol protects against ischemic injury. *J Cereb Blood Flow Metab* **18**: 1253-1258, 1998.
- DUBAL DB, RAU SW, SHUGHRUE PJ, ZHU H, YU J, CASHION AB, SUZUKI S, GERHOLD LM, BOTTFNER MB, DUBAL SB, MERCHANHALER I, KINDY MS, WISE PM: Differential modulation of estrogen receptors (ERs) in ischemic brain injury: a role for ERalpha in estradiol-mediated protection against delayed cell death. *Endocrinology* **147**: 3076-3084, 2006.



- DUBAL DB, ZHU H, YU J, RAU SW, SHUGHRUE PJ, MERCHENTHALER I, KINDY MS, WISE PM: Estrogen receptor alpha, not beta, is a critical link in estradiol-mediated protection against brain injury. *Proc Natl Acad Sci USA* **98**: 1952-1957, 2001.
- HABERG A, QU H, HARALDSETH O, UNSGÅRD G, SONNEWALD U: *In vivo* injection of [1-<sup>13</sup>C]glucose and [1,2-<sup>13</sup>C]acetate combined with *ex vivo* <sup>13</sup>C nuclear magnetic resonance spectroscopy: a novel approach to the study of middle cerebral artery occlusion in the rat. *J Cereb Blood Flow Metab* **18**: 1223-1232, 1998.
- HABERG A, QU H, SAETHER O, UNSGÅRD G, HARALDSETH O, SONNEWALD U: Differences in neurotransmitter synthesis and intermediary metabolism between glutamatergic and GABAergic neurons during 4 hours of middle cerebral artery occlusion in the rat: the role of astrocytes in neuronal survival. *J Cereb Blood Flow Metab* **21**: 1451-1463, 2001.
- HALL ED, PAZARA KE, LINSEMAN KL: Sex differences in postischemic neuronal necrosis in gerbils. *J Cereb Blood Flow Metab* **11**: 292-298, 1991.
- HERTZ L: Bioenergetics of cerebral ischemia: a cellular perspective. *Neuropharmacology* **55**: 289-309, 2008.
- HOSSMANN KA: Cerebral ischemia: models, methods and outcomes. *Neuropharmacology* **55**: 257-270, 2008.
- HUPPMANN S, ROMER S, ALTMANN R, OBLADEN M, BERNIS M: 17beta-estradiol attenuates hyperoxia-induced apoptosis in mouse C8-D1A cell line. *J Neurosci Res* **86**: 3420-3426, 2008.
- IKEDA Y, NAGAI A: Differential expression of the estrogen receptors alpha and beta during postnatal development of the rat cerebellum. *Brain Res* **1083**: 39-49, 2006.
- JESMIN S, MOWA CN, MATSUDA N, SALAH-ELDIN AE, TOGASHI H, SAKUMA I, HATTORI Y, KITABATAKE A: Evidence for a potential role of estrogen in the penis: detection of estrogen receptor-alpha and -beta messenger ribonucleic acid and protein. *Endocrinology* **143**: 4764-4774, 2002.
- KAROVIC O, TONAZZINI I, REBOLA N, EDSTRÖM E, LÖVDAHL C, FREDHOLM BB, DARÉ E: Toxic effects of cobalt in primary cultures of mouse astrocytes. Similarities with hypoxia and role of HIF-1alpha. *Biochem Pharmacol* **73**: 694-708, 2007.
- KUO J, HARIRI OR, BONDAR G, OGI J, MICEVYCH P: Membrane estrogen receptor-alpha interacts with metabotropic glutamate receptor type 1a to mobilize intracellular calcium in hypothalamic astrocytes. *Endocrinology* **150**: 1369-1376, 2009.
- LI J, McCULLOUGH LD: Effects of AMP-activated protein kinase in cerebral ischemia. *J Cereb Blood Flow Metab* **30**: 480-492, 2010.
- MEDA C, VEGETO E, POLLIO G, CHIANA P, PELLICCIARI C, MAGGI A: Oestrogen prevention of neural cell death correlates with decreased expression of mRNA for the pro-apoptotic protein nip-2. *J Neuroendocrinol* **12**: 1051-1059, 2000.
- MERGENTHALER P, DIRNAGL U, MEISEL A: Pathophysiology of stroke: lessons from animal models. *Metab Brain Dis* **19**: 151-167, 2004.
- PASQUALINI C, GUIVARCH D, BARNIER JV, GUIBERT B, VINCENT JD, VERNIER P: Differential subcellular distribution and transcriptional activity of sigmaE3, sigmaE4, and sigmaE3-4 isoforms of the rat estrogen receptor-alpha. *Mol Endocrinol* **15**: 894-908, 2001.
- PAWLAK J, BRITO V, KUPPERS E, BEYER C: Regulation of glutamate transporter GLAST and GLT-1 expression in astrocytes by estrogen. *Brain Res Mol Brain Res* **138**: 1-7, 2005.
- PETERSEN DN, TKALCEVIC GT, KOZA-TAYLOR PH, TURI TG, BROWN TA: Identification of estrogen receptor beta2, a functional variant of estrogen receptor beta expressed in normal rat tissues. *Endocrinology* **139**: 1082-1092, 1998.
- PFAFFL MW: A new mathematical model for relative quantification in real-time RT-PCR. *Nucleic Acids Res* **29**: e45, 2001.
- PREWITT AK, WILSON ME: Changes in estrogen receptor-alpha mRNA in the mouse cortex during development. *Brain Res* **1134**: 62-69, 2007.
- PRICE RH, LORENZON N, HANDA RJ: Differential expression of estrogen receptor beta splice variants in rat brain: identification and characterization of a novel variant missing exon 4. *Brain Res Mol Brain Res* **80**: 260-268, 2000.

- 
- QIU C, SHAN L, YU M, SNYDERWINE EG: Steroid hormone receptor expression and proliferation in rat mammary gland carcinomas induced by 2-amino-1-methyl-6-phenylimidazo[4,5-b]pyridine. *Carcinogenesis* **26**: 763-769, 2005.
- REDZIC ZB, MALATIALI SA, AL-BADER M, AL-SARRAF HA: Effects of hypoxia, glucose deprivation and recovery on the expression of nucleoside transporters and adenosine uptake in primary culture of rat cortical astrocytes. *Neurochem Res* **35**: 1434-1444, 2010.
- RIST RJ, ROMERO IA, CHAN MW, COURAUD PO, ROUX F, ABBOTT NJ: F-actin cytoskeleton and sucrose permeability of immortalised rat brain microvascular endothelial cell monolayers: effects of cyclic AMP and astrocytic factors. *Brain Res* **768**: 10-18, 1997.
- ROMERO IA, LISTER T, RICHARDS HK, SEVILLE MP, WYLIE SP, RAY DE: Early metabolic changes during m-Dinitrobenzene neurotoxicity and the possible role of oxidative stress. *Free Radic Biol Med* **18**: 311-319, 1995.
- RUSA R, ALKAYED NJ, CRAIN BJ, TRAYSTMAN RJ, KIMES AS, LONDON ED, KLAUS JA, HURN PD: 17beta-estradiol reduces stroke injury in estrogen-deficient female animals. *Stroke* **30**: 1665-1670, 1999.
- SATO K, MATSUKI N, OHNO Y, NAKAZAWA K: Estrogens inhibit l-glutamate uptake activity of astrocytes via membrane estrogen receptor alpha. *J Neurochem* **86**: 1498-1505, 2003.
- SEMENZA GL: Oxygen-dependent regulation of mitochondrial respiration by hypoxia-inducible factor 1. *Biochem J* **405**: 1-9, 2007.
- SHUGHRUE PJ, LANE MV, MERCHENTHALER I: Comparative distribution of estrogen receptor-alpha and -beta mRNA in the rat central nervous system. *J Comp Neurol* **388**: 507-525, 1997.
- TAYLOR SE, MARTIN-HIRSCH PL, MARTIN FL: Oestrogen receptor splice variants in the pathogenesis of disease. *Cancer Lett* **288**: 133-148, 2010.
- TOUNG TJ, TRAYSTMAN RJ, HURN PD: Estrogen-mediated neuroprotection after experimental stroke in male rats. *Stroke* **29**: 1666-1670, 1998.
- VERDIER F, CHRÉTIEN S, BILLAT C, GISSELBRECHT S, LACOMBE C, MAYEUX P: Erythropoietin induces the tyrosine phosphorylation of insulin receptor substrate-2. An alternate pathway for erythropoietin-induced phosphatidylinositol 3-kinase activation. *J Biol Chem* **272**: 26173-26178, 1997.
- WILSON ME, WESTBERRY JM: Regulation of oestrogen receptor gene expression: new insights and novel mechanisms. *J Neuroendocrinol* **21**: 238-242, 2009.
- WILSON ME, WESTBERRY JM, PREWITT AK: Dynamic regulation of estrogen receptor-alpha gene expression in the brain: a role for promoter methylation? *Front Neuroendocrinol* **29**: 375-385, 2008.
- YI JM, KWON HY, CHO JY, LEE YJ: Estrogen and hypoxia regulate estrogen receptor alpha in a synergistic manner. *Biochem Biophys Res Commun* **378**: 842-846, 2009.
-