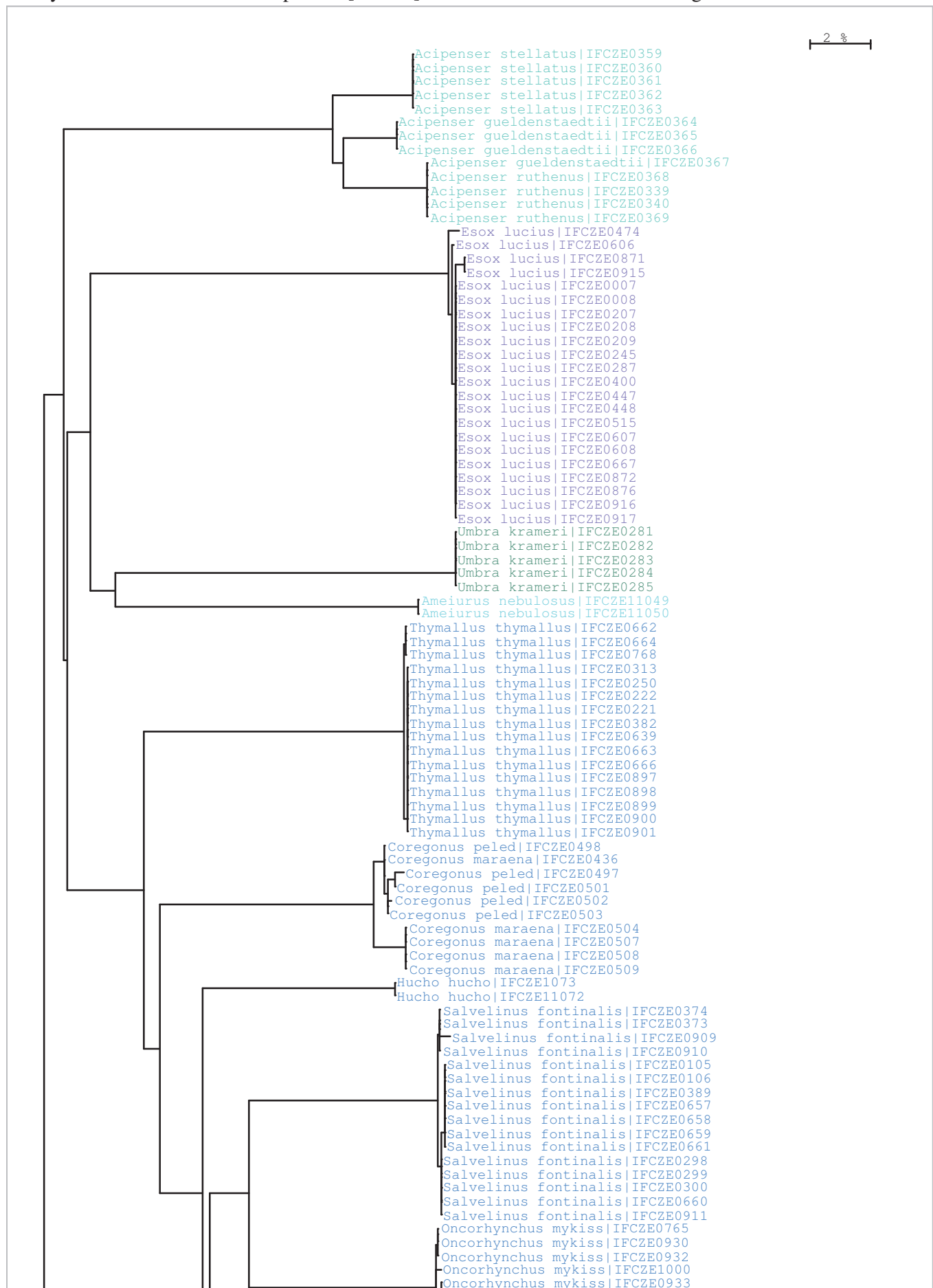
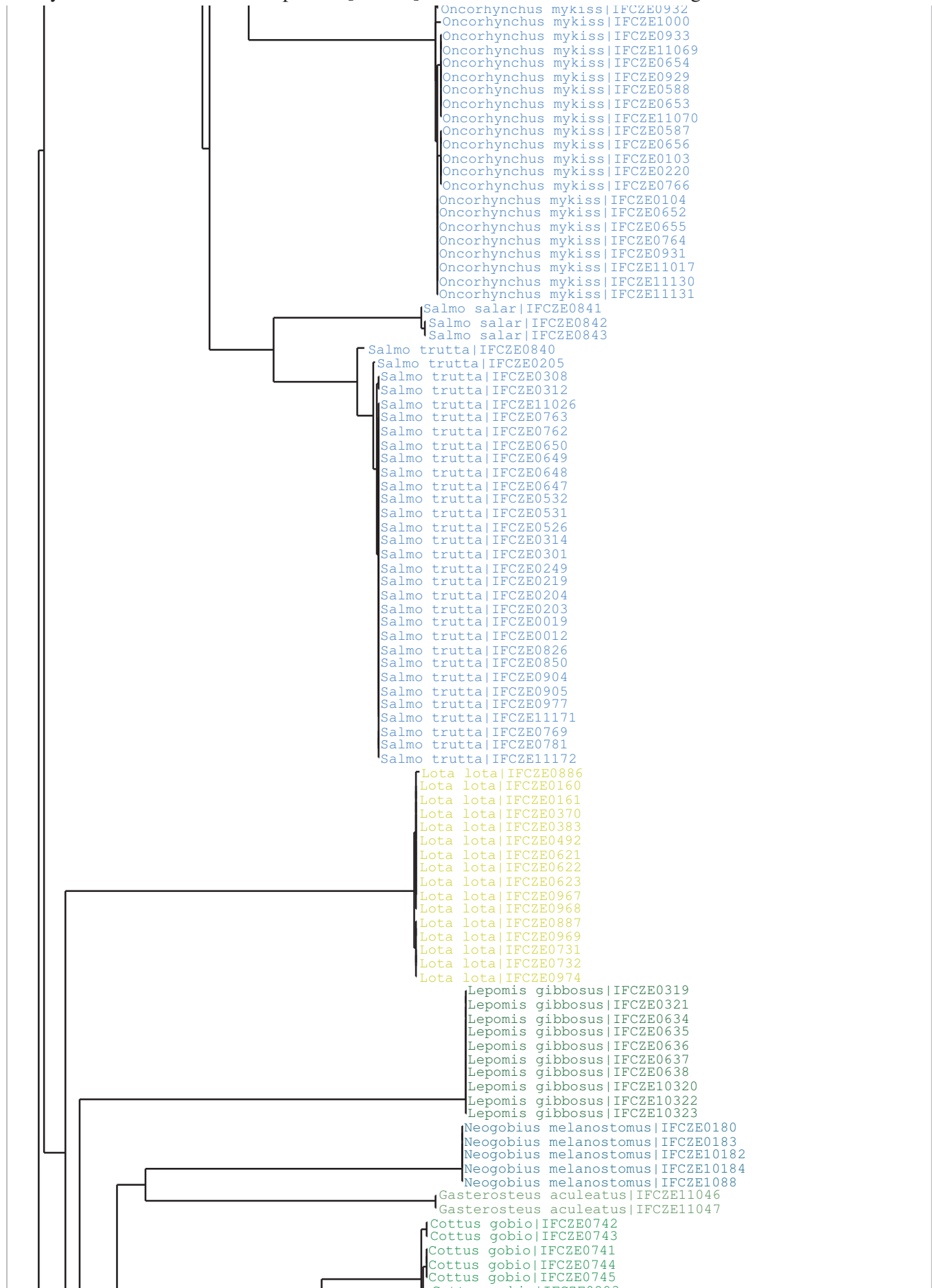


Project : Ichthyofauna of the Czech Republic [IFCZE]
Date : 7-October-2011
Data Type : Nucleotide
Distance Model : Kimura 2 Parameter
Marker : COI-5P
Codon Positions : 1st, 2nd, 3rd
Labels : SampleID,
Filters : Length > 500
Colorization : tax_family

Sequence Count : 820
Species count : 67
Genus count : 53
Family count : 17
Unidentified : 0





Cottus gobio|IFCZE0744
Cottus gobio|IFCZE0745
Cottus gobio|IFCZE0893
Cottus gobio|IFCZE0894
Cottus gobio|IFCZE0838
Cottus gobio|IFCZE0814
Cottus gobio|IFCZE0546
Cottus gobio|IFCZE0545
Cottus gobio|IFCZE0544
Cottus gobio|IFCZE0377
Cottus gobio|IFCZE0185
Cottus gobio|IFCZE10171
Cottus gobio|IFCZE0839
Cottus gobio|IFCZE0848
Cottus gobio|IFCZE10167
Cottus gobio|IFCZE10168
Cottus gobio|IFCZE10169
Cottus gobio|IFCZE10186
Cottus poecilopus|IFCZE0746
Cottus poecilopus|IFCZE0747
Cottus poecilopus|IFCZE0748
Cottus poecilopus|IFCZE0749
Cottus poecilopus|IFCZE0750
Cottus poecilopus|IFCZE11133
Cottus poecilopus|IFCZE0978
Cottus poecilopus|IFCZE0187
Cottus poecilopus|IFCZE11135
Cottus poecilopus|IFCZE11137
Cottus poecilopus|IFCZE11141
Cottus poecilopus|IFCZE10188
Cottus poecilopus|IFCZE10190
Cottus poecilopus|IFCZE10191
Cottus poecilopus|IFCZE1132
Perca fluviatilis|IFCZE0734
Perca fluviatilis|IFCZE0297
Perca fluviatilis|IFCZE0276
Perca fluviatilis|IFCZE0179
Perca fluviatilis|IFCZE0102
Perca fluviatilis|IFCZE0735
Perca fluviatilis|IFCZE0736
Perca fluviatilis|IFCZE0803
Perca fluviatilis|IFCZE0823
Perca fluviatilis|IFCZE0737
Perca fluviatilis|IFCZE0407
Perca fluviatilis|IFCZE0346
Perca fluviatilis|IFCZE0345
Perca fluviatilis|IFCZE0337
Perca fluviatilis|IFCZE0315
Perca fluviatilis|IFCZE0240
Perca fluviatilis|IFCZE0166
Perca fluviatilis|IFCZE0162
Perca fluviatilis|IFCZE0165
Perca fluviatilis|IFCZE0478
Perca fluviatilis|IFCZE0512
Perca fluviatilis|IFCZE0581
Perca fluviatilis|IFCZE0584
Perca fluviatilis|IFCZE0585
Perca fluviatilis|IFCZE0861
Perca fluviatilis|IFCZE0862
Perca fluviatilis|IFCZE0970
Perca fluviatilis|IFCZE0971
Perca fluviatilis|IFCZE0972
Gymnocephalus cernua|IFCZE0631
Gymnocephalus cernua|IFCZE0632
Gymnocephalus cernua|IFCZE0740
Gymnocephalus cernua|IFCZE0491
Gymnocephalus cernua|IFCZE0888
Gymnocephalus cernua|IFCZE0426
Gymnocephalus cernua|IFCZE0328
Gymnocephalus cernua|IFCZE0325
Gymnocephalus cernua|IFCZE0324
Gymnocephalus cernua|IFCZE0091
Gymnocephalus cernua|IFCZE0278
Gymnocephalus cernua|IFCZE0641
Gymnocephalus cernua|IFCZE0326
Gymnocephalus cernua|IFCZE0327
Gymnocephalus cernua|IFCZE11012
Gymnocephalus cernua|IFCZE1154
Gymnocephalus baloni|IFCZE0093
Gymnocephalus schraetser|IFCZE13889
Gymnocephalus schraetser|IFCZE13891
Sander lucioperca|IFCZE0086
Sander lucioperca|IFCZE0251
Sander lucioperca|IFCZE0277
Sander lucioperca|IFCZE0409
Sander lucioperca|IFCZE0410
Sander lucioperca|IFCZE0457
Sander lucioperca|IFCZE0458
Sander lucioperca|IFCZE0476
Sander lucioperca|IFCZE0516
Sander lucioperca|IFCZE0517
Sander lucioperca|IFCZE0518
Sander lucioperca|IFCZE0620
Sander lucioperca|IFCZE0739

