

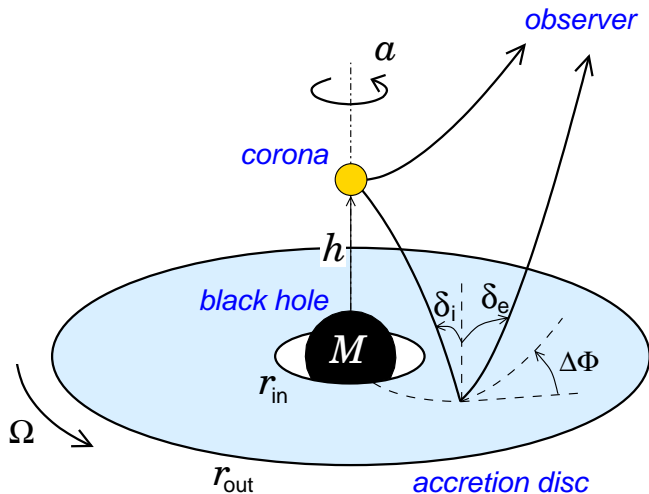
# Time lags in the lamp-post geometry of the compact corona illuminating a black-hole accretion disc

Michal Dovčiak

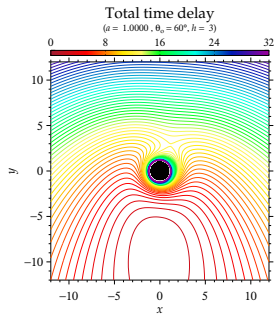
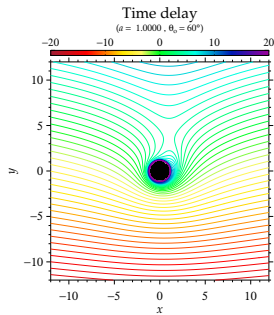
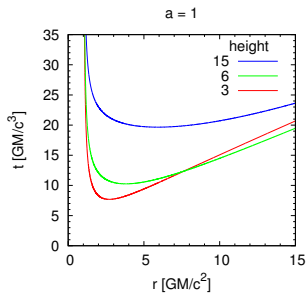
Astronomical Institute  
Academy of Sciences of the Czech Republic, Prague

*6<sup>th</sup> FERO meeting*  
30<sup>th</sup> – 31<sup>st</sup> August 2012  
Astronomical Institute AS CR, Prague

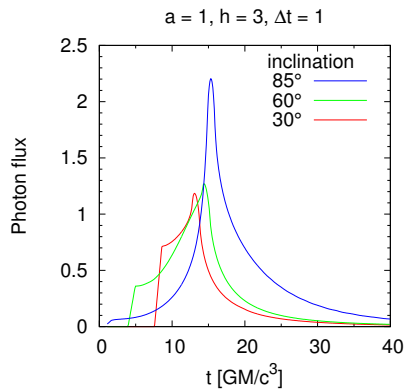
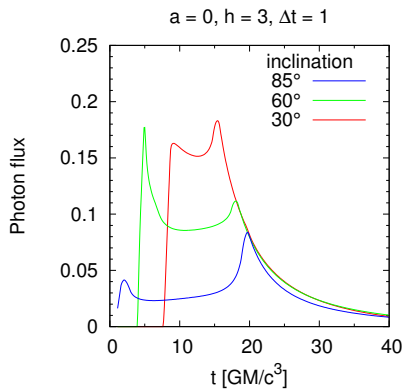
# Scheme of the geometry



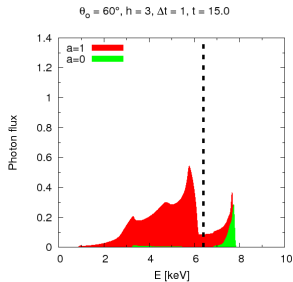
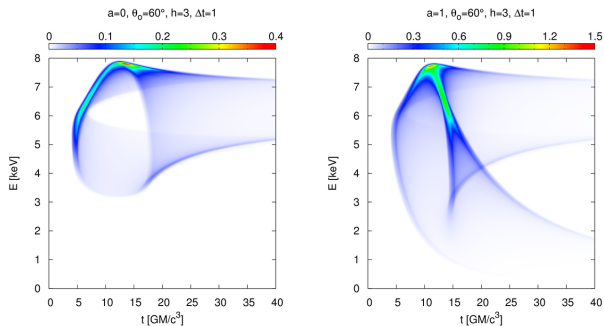
# Time delay



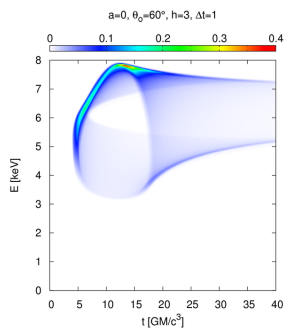
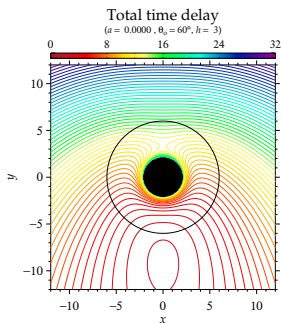
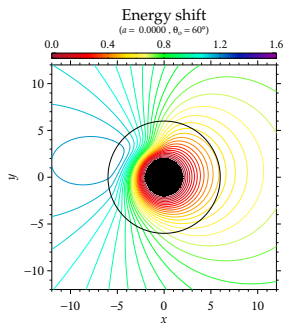
# Light curve



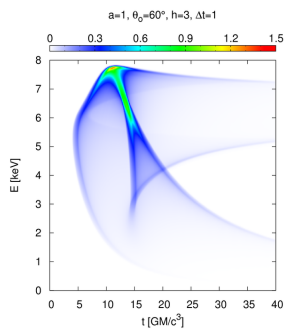
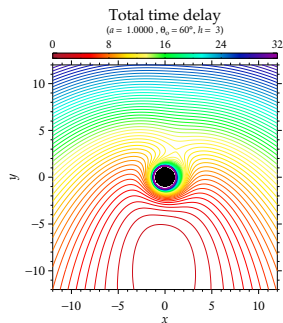
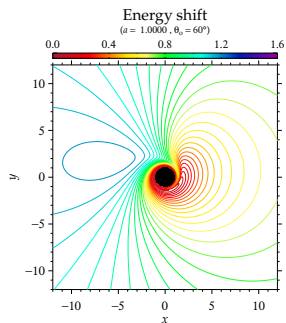
# Dynamic spectrum



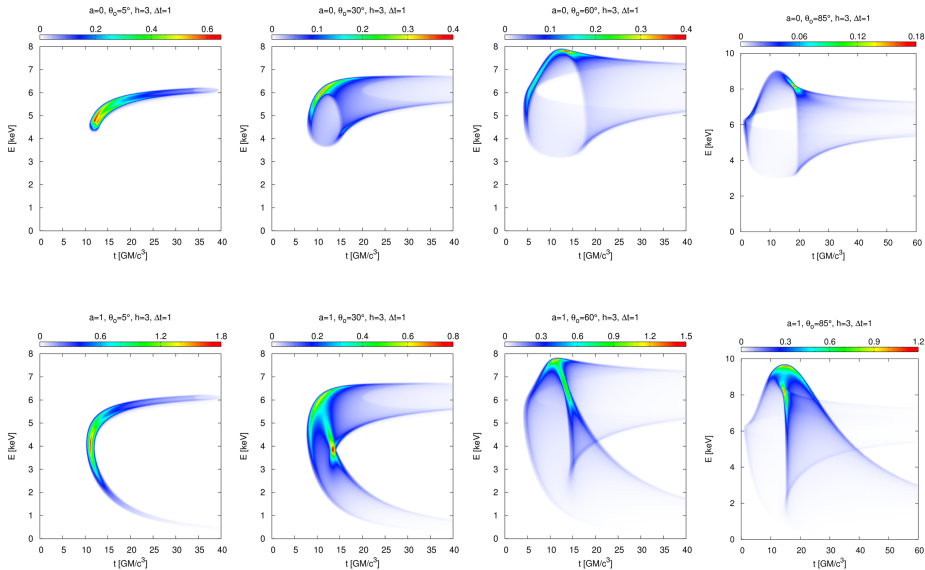
# Dynamic spectrum



# Dynamic spectrum

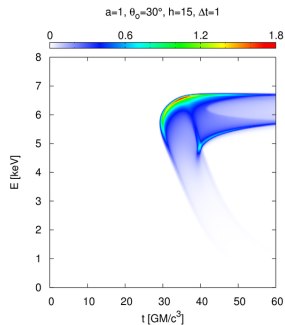
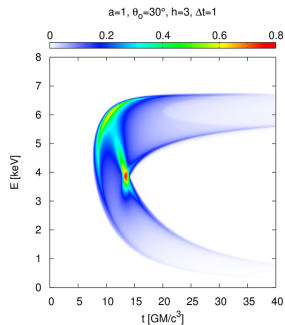
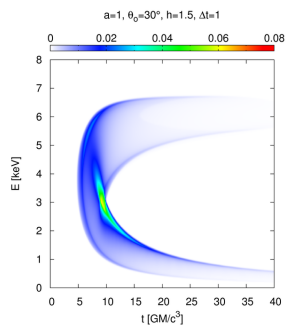


# Dynamic spectrum — dependence on inclination

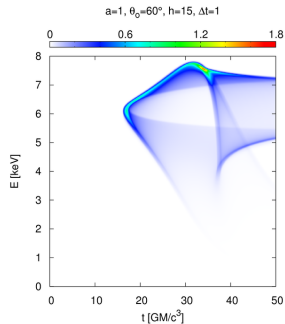
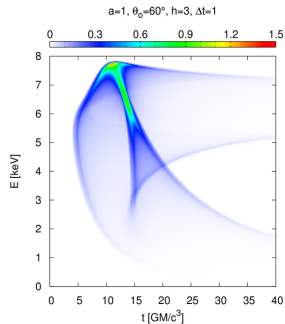
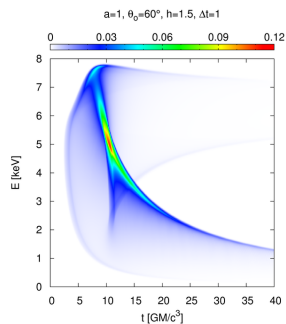




# Dynamic spectrum — dependence on height

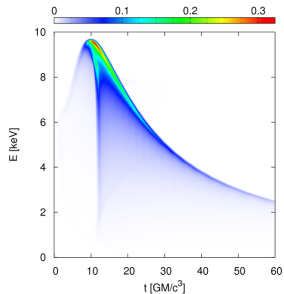


# Dynamic spectrum — dependence on height

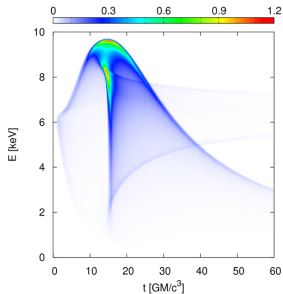


# Dynamic spectrum — dependence on height

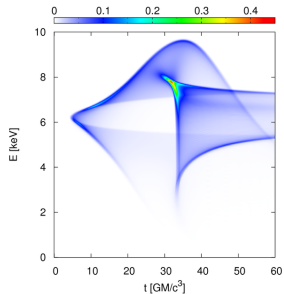
$a=1, \theta_0=85^\circ, h=1.5, \Delta t=1$



$a=1, \theta_0=85^\circ, h=3, \Delta t=1$



$a=1, \theta_0=85^\circ, h=15, \Delta t=1$



# Dynamic spectrum with reflection continuum

