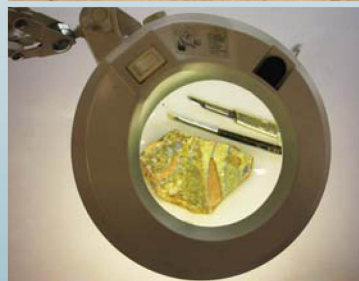
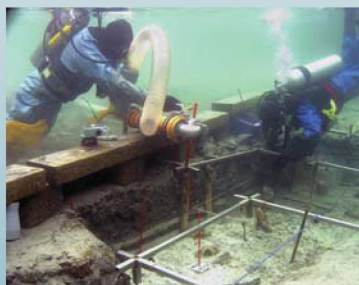


STANDARDY A PŘÍRUČKA K DOBRÉ PRAXI PÉČE O ARCHEOLOGICKÉ FONDY V EVROPĚ

EAC GUIDELINES 1



Kathy PERRIN, Duncan H. BROWN,
Gus LANGE, David BIBBY,
Annika CARLSSON, Ann DEGRAEVE,
Martin KUNA, Ylva LARSSON,
Sólborg Una PÁLSDÓTTIR,
Bettina STOLL-TUCKER