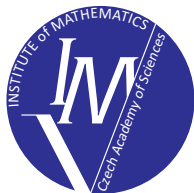


Numerical lower bounds on eigenvalues of elliptic operators

Tomáš Vejchodský (vejchod@math.cas.cz)

Institute of Mathematics
Czech Academy of Sciences



EMS School in Applied Mathematics, Kácov, May 29 – June 3, 2016



What do we do in numerics?



What do we do in numerics?

We solve problems approximately.



What do we do in numerics?

We solve problems approximately.

What should we do?



What do we do in numerics?

We solve problems approximately.

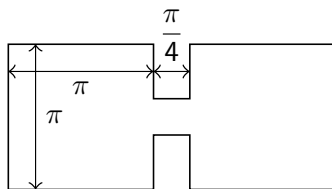
What should we do?

Solve problems within a given accuracy.



Example – dumbbell

$$\begin{aligned} -\Delta u_j &= \lambda_j u_j && \text{in } \Omega \\ u_j &= 0 && \text{on } \partial\Omega \end{aligned}$$

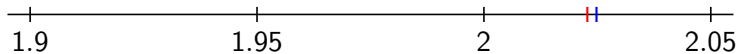
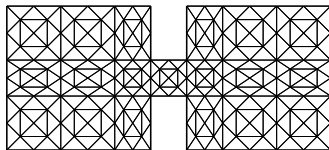


[Trefethen, Betcke 2006]

Example – dumbbell

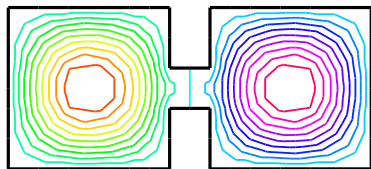
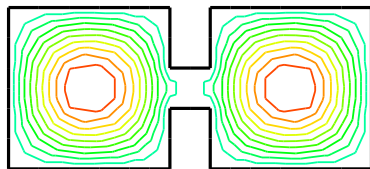


$$\begin{aligned} -\Delta u_j &= \lambda_j u_j && \text{in } \Omega \\ u_j &= 0 && \text{on } \partial\Omega \end{aligned}$$



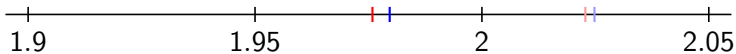
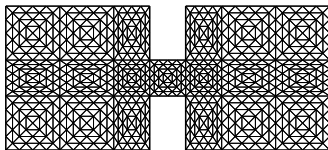
$$\lambda_1 \approx 2.02280$$

$$\lambda_2 \approx 2.02481$$



Example – dumbbell

$$\begin{aligned}
 -\Delta u_j &= \lambda_j u_j && \text{in } \Omega \\
 u_j &= 0 && \text{on } \partial\Omega
 \end{aligned}$$

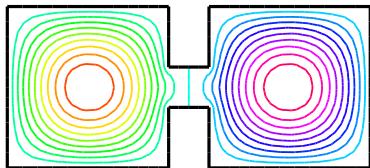
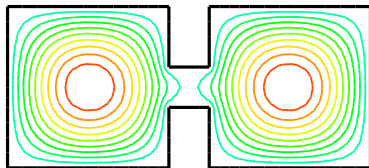


$$\lambda_1 \approx 2.02280$$

$$\lambda_2 \approx 2.02481$$

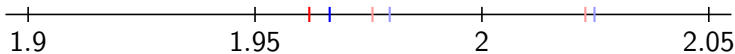
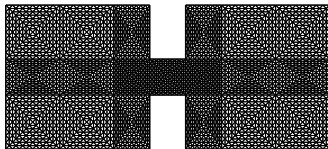
$$\lambda_1 \approx 1.97588$$

$$\lambda_2 \approx 1.97967$$



Example – dumbbell

$$\begin{aligned}
 -\Delta u_j &= \lambda_j u_j && \text{in } \Omega \\
 u_j &= 0 && \text{on } \partial\Omega
 \end{aligned}$$



$$\lambda_1 \approx 2.02280$$

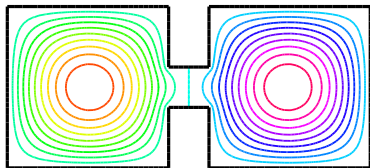
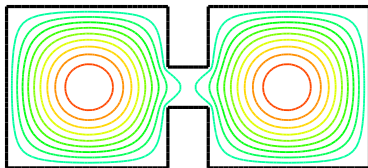
$$\lambda_2 \approx 2.02481$$

$$\lambda_1 \approx 1.97588$$

$$\lambda_2 \approx 1.97967$$

$$\lambda_1 \approx 1.96196$$

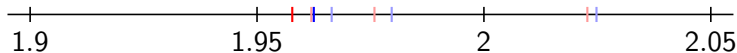
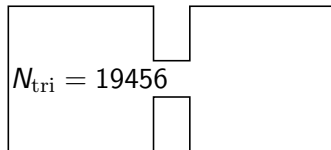
$$\lambda_2 \approx 1.96644$$





Example – dumbbell

$$\begin{aligned} -\Delta u_j &= \lambda_j u_j && \text{in } \Omega \\ u_j &= 0 && \text{on } \partial\Omega \end{aligned}$$

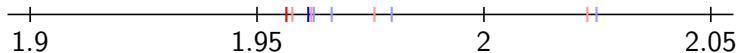
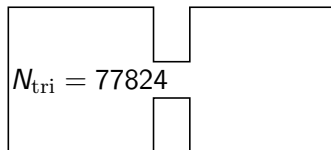


$\lambda_1 \approx 2.02280$	$\lambda_2 \approx 2.02481$
$\lambda_1 \approx 1.97588$	$\lambda_2 \approx 1.97967$
$\lambda_1 \approx 1.96196$	$\lambda_2 \approx 1.96644$
$\lambda_1 \approx 1.95777$	$\lambda_2 \approx 1.96251$



Example – dumbbell

$$\begin{aligned} -\Delta u_j &= \lambda_j u_j && \text{in } \Omega \\ u_j &= 0 && \text{on } \partial\Omega \end{aligned}$$

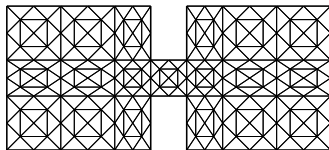


$\lambda_1 \approx 2.02280$	$\lambda_2 \approx 2.02481$
$\lambda_1 \approx 1.97588$	$\lambda_2 \approx 1.97967$
$\lambda_1 \approx 1.96196$	$\lambda_2 \approx 1.96644$
$\lambda_1 \approx 1.95777$	$\lambda_2 \approx 1.96251$
$\lambda_1 \approx 1.95646$	$\lambda_2 \approx 1.96129$

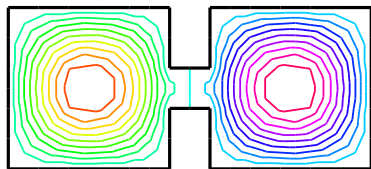
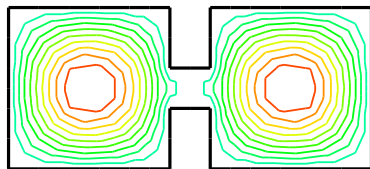
Example – dumbbell



$$\begin{aligned} -\Delta u_j &= \lambda_j u_j && \text{in } \Omega \\ u_j &= 0 && \text{on } \partial\Omega \end{aligned}$$



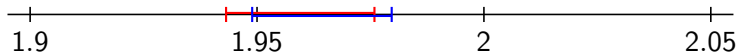
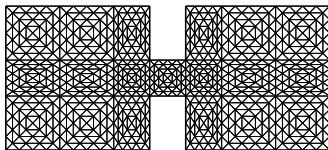
$$1.91067 \leq \lambda_1 \leq 2.02280 \quad 1.91981 \leq \lambda_2 \leq 2.02481$$



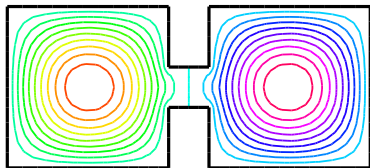
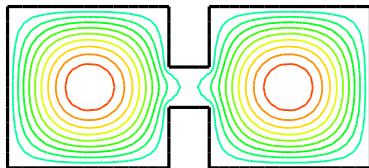
Example – dumbbell



$$\begin{aligned} -\Delta u_j &= \lambda_j u_j && \text{in } \Omega \\ u_j &= 0 && \text{on } \partial\Omega \end{aligned}$$

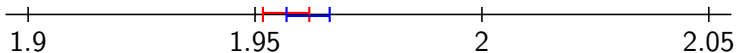
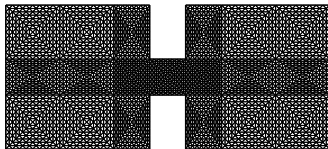


$$\begin{aligned} 1.91067 &\leq \lambda_1 \leq 2.02280 && 1.91981 \leq \lambda_2 \leq 2.02481 \\ 1.94317 &\leq \lambda_1 \leq 1.97588 && 1.94893 \leq \lambda_2 \leq 1.97967 \end{aligned}$$

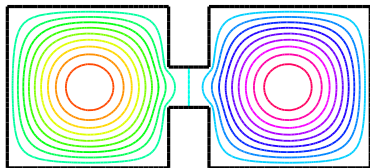
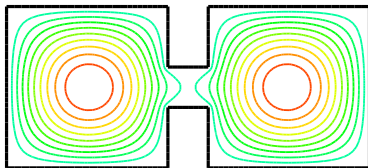


Example – dumbbell

$$\begin{aligned}
 -\Delta u_j &= \lambda_j u_j & \text{in } \Omega \\
 u_j &= 0 & \text{on } \partial\Omega
 \end{aligned}$$



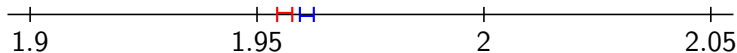
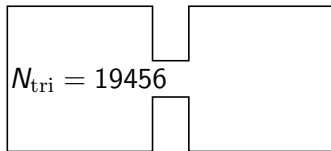
$$\begin{aligned}
 1.91067 &\leq \lambda_1 \leq 2.02280 & 1.91981 &\leq \lambda_2 \leq 2.02481 \\
 1.94317 &\leq \lambda_1 \leq 1.97588 & 1.94893 &\leq \lambda_2 \leq 1.97967 \\
 1.95174 &\leq \lambda_1 \leq 1.96196 & 1.95694 &\leq \lambda_2 \leq 1.96644
 \end{aligned}$$





Example – dumbbell

$$\begin{aligned} -\Delta u_j &= \lambda_j u_j && \text{in } \Omega \\ u_j &= 0 && \text{on } \partial\Omega \end{aligned}$$

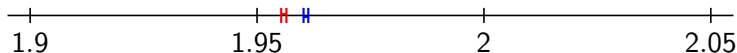
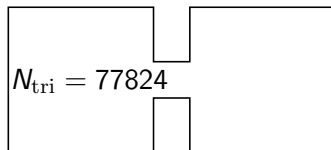


$1.91067 \leq \lambda_1 \leq 2.02280$	$1.91981 \leq \lambda_2 \leq 2.02481$
$1.94317 \leq \lambda_1 \leq 1.97588$	$1.94893 \leq \lambda_2 \leq 1.97967$
$1.95174 \leq \lambda_1 \leq 1.96196$	$1.95694 \leq \lambda_2 \leq 1.96644$
$1.95443 \leq \lambda_1 \leq 1.95777$	$1.95944 \leq \lambda_2 \leq 1.96251$



Example – dumbbell

$$\begin{aligned} -\Delta u_j &= \lambda_j u_j && \text{in } \Omega \\ u_j &= 0 && \text{on } \partial\Omega \end{aligned}$$



$1.91067 \leq \lambda_1 \leq 2.02280$	$1.91981 \leq \lambda_2 \leq 2.02481$
$1.94317 \leq \lambda_1 \leq 1.97588$	$1.94893 \leq \lambda_2 \leq 1.97967$
$1.95174 \leq \lambda_1 \leq 1.96196$	$1.95694 \leq \lambda_2 \leq 1.96644$
$1.95443 \leq \lambda_1 \leq 1.95777$	$1.95944 \leq \lambda_2 \leq 1.96251$
$1.95532 \leq \lambda_1 \leq 1.95646$	$1.96025 \leq \lambda_2 \leq 1.96129$

Upper bounds on eigenvalues



Laplace eigenvalue problem

$$\begin{aligned} -\Delta u_i &= \lambda_i u_i && \text{in } \Omega \\ u_i &= 0 && \text{on } \partial\Omega \end{aligned}$$

Weak formulation

$$\lambda_i \in \mathbb{R}, \quad u_i \in H_0^1(\Omega) : \quad (\nabla u_i, \nabla v) = \lambda_i (u_i, v) \quad \forall v \in H_0^1(\Omega)$$

Finite element method

$$\begin{aligned} V_h &= \{v_h \in H_0^1(\Omega) : v_h|_K \in P_1(K), \quad \forall K \in \mathcal{T}_h\} \\ \Lambda_{h,i} \in \mathbb{R}, \quad u_{h,i} \in V_h : \quad (\nabla u_{h,i}, \nabla v_h) &= \Lambda_{h,i} (u_{h,i}, v_h) \quad \forall v_h \in V_h \end{aligned}$$

Lower bound?

$$? \leq \lambda_i \leq \Lambda_{h,i}, \quad i = 1, 2, \dots, m$$



Old problem:

Temple 1928, Kato 1949, Lehmann 1949, 1950, Harrell 1978, ...

Methods based on FEM:

1. Eigenvalue inclusions [Behnke, Mertins, Plum, Wieners 2000]
based on [Behnke, Goerish 1994] and [Plum 1997]
2. Crouzeix–Raviart elements [Carstensen, Gedicke 2013]
3. Complementarity based [Šebestová, Vejchodský 2016]



Method 1. Eigenvalue inclusions

Input: Rough lower bounds: $\underline{\lambda}_2 \leq \lambda_2, \dots, \underline{\lambda}_{m+1} \leq \lambda_{m+1}$,

Algorithm:

- ▶ FEM eigenpairs: $\Lambda_{h,i} \in \mathbb{R}, u_{h,i} \in V_h, i = 1, 2, \dots, m$
- ▶ Mixed FEM problem: $\sigma_{h,i} \in \mathbf{W}_h, q_{h,i} \in Q_h, i = 1, 2, \dots, m$
 $\mathbf{W}_h = \{\sigma_h \in \mathbf{H}(\text{div}, \Omega) : \sigma_h|_K \in \mathbf{RT}_k(K) \quad \forall K \in \mathcal{T}_h\}$
 $Q_h = \{q_h \in L^2(\Omega) : q_h|_K \in P_k(K) \quad \forall K \in \mathcal{T}_h\}$

$$\begin{aligned}(\sigma_{h,i}, \mathbf{w}_h) + (q_{h,i}, \text{div } \mathbf{w}_h) &= 0 & \forall \mathbf{w}_h \in \mathbf{W}_h, \\(\text{div } \sigma_{h,i}, \varphi_h) &= (-u_{h,i}, \varphi_h) & \forall \varphi_h \in Q_h,\end{aligned}$$



Method 1. Eigenvalue inclusions

Input: Rough lower bounds: $\underline{\lambda}_2 \leq \lambda_2, \dots, \underline{\lambda}_{m+1} \leq \lambda_{m+1}$,

Algorithm:

- ▶ FEM eigenpairs: $\Lambda_{h,i} \in \mathbb{R}, u_{h,i} \in V_h, i = 1, 2, \dots, m$
- ▶ Mixed FEM problem: $\sigma_{h,i} \in \mathbf{W}_h, q_{h,i} \in Q_h, i = 1, 2, \dots, m$
- ▶ For $n = 1, 2, \dots, m$ do

$$\gamma = \|u_{h,n} + \operatorname{div} \sigma_{h,n}\|_{L^2(\Omega)}, \quad \rho = \underline{\lambda}_{n+1} + \gamma$$

$$\mathbf{M}_{ij} = (\nabla u_{h,i}, \nabla u_{h,j}) + (\gamma - \rho)(u_{h,i}, u_{h,j})$$

$$\mathbf{N}_{ij} = (\nabla u_{h,i}, \nabla u_{h,j}) + (\gamma - 2\rho)(u_{h,i}, u_{h,j}) + \rho^2(\sigma_{h,i}, \sigma_{h,j}) \\ + (\rho^2/\gamma)(u_{h,i} + \operatorname{div} \sigma_{h,i}, u_{h,j} + \operatorname{div} \sigma_{h,j})$$

$$\mu_1 \leq \dots \leq \mu_n : \quad \mathbf{M} \mathbf{y}_i = \mu_i \mathbf{N} \mathbf{y}_i, \quad i = 1, 2, \dots, n$$

If \mathbf{N} is s.p.d. and if $\mu_i < 0$ then

$$\ell_{j,n}^{\text{incl}} = \rho - \gamma - \rho / (1 - \mu_{n+1-j}) \leq \lambda_j, \quad j = 1, 2, \dots, n.$$

end for

$$\ell_j^{\text{incl}} = \max\{\ell_{j,n}^{\text{incl}}, n = j, j+1, \dots, m\} \leq \lambda_j, \quad j = 1, 2, \dots, m$$



Method 2. Crouzeix–Raviart elements

Crouzeix–Raviart finite elements

$V_h^{\text{CR}} = \{v_h \in P_1(\mathcal{T}_h) : v_h \text{ continuous in midpoints of all } \gamma \in \mathcal{E}_h\}$

Find $0 \neq u_{h,i}^{\text{CR}} \in V_h^{\text{CR}}, \lambda_{h,i}^{\text{CR}} \in \mathbb{R}$:

$$(\nabla u_{h,i}^{\text{CR}}, \nabla v_h) = \lambda_{h,i}^{\text{CR}} (u_{h,i}^{\text{CR}}, v_h) \quad \forall v_h \in V_h^{\text{CR}}.$$

Lower bound (no round-off errors)

$$\ell_i^{\text{CR}} = \frac{\lambda_{h,i}^{\text{CR}}}{1 + \kappa^2 \lambda_{h,i}^{\text{CR}} h_{\max}^2} \leq \lambda_i \quad \forall i = 1, 2, \dots$$

where

- ▶ $\kappa^2 = 1/8 + j_{1,1}^{-2} \leq 0.1932$
- ▶ $h_{\max} = \max_{K \in \mathcal{T}_h} \text{diam } K$



Method 2. Crouzeix–Raviart elements

Crouzeix–Raviart finite elements

$V_h^{\text{CR}} = \{v_h \in P_1(\mathcal{T}_h) : v_h \text{ continuous in midpoints of all } \gamma \in \mathcal{E}_h\}$

Find $0 \neq u_{h,i}^{\text{CR}} \in V_h^{\text{CR}}, \lambda_{h,i}^{\text{CR}} \in \mathbb{R}$:

$$(\nabla u_{h,i}^{\text{CR}}, \nabla v_h) = \lambda_{h,i}^{\text{CR}} (u_{h,i}^{\text{CR}}, v_h) \quad \forall v_h \in V_h^{\text{CR}}.$$

Lower bound (inexact solver: $\mathbf{A}\tilde{\mathbf{u}}_i^{\text{CR}} \approx \tilde{\lambda}_{h,i}^{\text{CR}}\mathbf{B}\tilde{\mathbf{u}}_i^{\text{CR}}$)

$$\tilde{\rho}_i^{\text{CR}} = \frac{\tilde{\lambda}_{h,i}^{\text{CR}} - \|\mathbf{r}\|_{\mathbf{B}^{-1}}}{1 + \kappa^2 \left(\tilde{\lambda}_{h,i}^{\text{CR}} - \|\mathbf{r}\|_{\mathbf{B}^{-1}} \right) h_{\max}^2} \leq \lambda_i \quad \forall i = 1, 2, \dots$$

where

- ▶ $\kappa^2 = 1/8 + j_{1,1}^{-2} \leq 0.1932$
- ▶ $h_{\max} = \max_{K \in \mathcal{T}_h} \text{diam } K$
- ▶ $\mathbf{r} = \mathbf{A}\tilde{\mathbf{u}}_i^{\text{CR}} - \tilde{\lambda}_{h,i}^{\text{CR}}\mathbf{B}\tilde{\mathbf{u}}_i^{\text{CR}}$

Provided

- ▶ $\|\mathbf{r}\|_{\mathbf{B}^{-1}} < \tilde{\lambda}_{h,i}^{\text{CR}}$
- ▶ $\tilde{\lambda}_{h,i}^{\text{CR}}$ is closer to $\lambda_{h,i}^{\text{CR}}$ than to any other discrete eigenvalue $\lambda_{h,j}^{\text{CR}}, j \neq i$



Upper bound

- ▶ \mathcal{T}_h^* is the red refinement of \mathcal{T}_h
- ▶ $u_{h,i}^* = \mathcal{I}_{\text{CM}} \tilde{u}_{h,i}^{\text{CR}}$ for $i = 1, 2, \dots, m$
- ▶ $\mathbf{S}, \mathbf{Q} \in \mathbb{R}^{m \times m}$ with entries $\mathbf{S}_{j,k} = (\nabla u_{h,j}^*, \nabla u_{h,k}^*)$ and $\mathbf{Q}_{j,k} = (u_{h,j}^*, u_{h,k}^*)$
- ▶ $\mathbf{S} \mathbf{y}_i = \Lambda_i^* \mathbf{Q} \mathbf{y}_i, \quad i = 1, 2, \dots, m$
- ▶ $\Lambda_1^* \leq \Lambda_2^* \leq \dots \leq \Lambda_m^*$
- ▶ $\lambda_i \leq \Lambda_i^*$ for $i = 1, 2, \dots, m$



Method 3. Complementarity based

▶ FEM eigenpairs: $\Lambda_{h,i} \in \mathbb{R}$, $u_{h,i} \in V_h$, $i = 1, 2, \dots, m$

▶ Flux reconstruction: $\mathbf{q}_{h,i} = \sum_{\mathbf{z} \in \mathcal{N}_h} \mathbf{q}_{\mathbf{z},i}$

▶ Local mixed FEM: $\mathbf{q}_{\mathbf{z},i} \in \mathbf{W}_{\mathbf{z}}$, $d_{\mathbf{z},i} \in P_1^*(\mathcal{T}_{\mathbf{z}})$

$$\begin{aligned} (\mathbf{q}_{\mathbf{z},i}, \mathbf{w}_h)_{\omega_{\mathbf{z}}} - (d_{\mathbf{z},i}, \operatorname{div} \mathbf{w}_h)_{\omega_{\mathbf{z}}} &= (\psi_{\mathbf{z}} \nabla u_{h,i}, \mathbf{w}_h)_{\omega_{\mathbf{z}}} & \forall \mathbf{w}_h \in \mathbf{W}_{\mathbf{z}} \\ -(\operatorname{div} \mathbf{q}_{\mathbf{z},i}, \varphi_h)_{\omega_{\mathbf{z}}} &= (r_{\mathbf{z},i}, \varphi_h)_{\omega_{\mathbf{z}}} & \forall \varphi_h \in P_1^*(\mathcal{T}_{\mathbf{z}}) \end{aligned}$$

where

▶ $\omega_{\mathbf{z}}$ is the patch of elements around vertex $\mathbf{z} \in \mathcal{N}_h$

▶ $\mathcal{T}_{\mathbf{z}}$ is the set of elements in $\omega_{\mathbf{z}}$

▶ $\mathbf{W}_{\mathbf{z}} = \{ \mathbf{w}_h \in \mathbf{H}(\operatorname{div}, \omega_{\mathbf{z}}) : \mathbf{w}_h|_K \in \mathbf{RT}_1(K) \forall K \in \mathcal{T}_{\mathbf{z}} \text{ and } \mathbf{w}_h \cdot \mathbf{n}_{\omega_{\mathbf{z}}} = 0 \text{ on } \Gamma_{\omega_{\mathbf{z}}}^{\text{ext}} \}$

▶ $P_1^*(\mathcal{T}_{\mathbf{z}}) = \begin{cases} \{v_h \in P_1(\mathcal{T}_{\mathbf{z}}) : \int_{\omega_{\mathbf{z}}} v_h \, dx = 0\} & \text{for } \mathbf{z} \in \mathcal{N}_h \setminus \partial\Omega \\ P_1(\mathcal{T}_{\mathbf{z}}) & \text{for } \mathbf{z} \in \mathcal{N}_h \cap \partial\Omega \end{cases}$

▶ $r_{\mathbf{z},i} = \Lambda_{h,i} \psi_{\mathbf{z}} u_{h,i} - \nabla \psi_{\mathbf{z}} \cdot \nabla u_{h,i}$



Method 3. Complementarity based

▶ FEM eigenpairs: $\Lambda_{h,i} \in \mathbb{R}$, $u_{h,i} \in V_h$, $i = 1, 2, \dots, m$

▶ Flux reconstruction: $\mathbf{q}_{h,i} = \sum_{z \in \mathcal{N}_h} \mathbf{q}_{z,i}$

▶ Local mixed FEM: $\mathbf{q}_{z,i} \in \mathbf{W}_z$, $d_{z,i} \in P_1^*(\mathcal{T}_z)$

$$\begin{aligned}(\mathbf{q}_{z,i}, \mathbf{w}_h)_{\omega_z} - (d_{z,i}, \operatorname{div} \mathbf{w}_h)_{\omega_z} &= (\psi_z \nabla u_{h,i}, \mathbf{w}_h)_{\omega_z} & \forall \mathbf{w}_h \in \mathbf{W}_z \\ -(\operatorname{div} \mathbf{q}_{z,i}, \varphi_h)_{\omega_z} &= (r_{z,i}, \varphi_h)_{\omega_z} & \forall \varphi_h \in P_1^*(\mathcal{T}_z)\end{aligned}$$

▶ Error estimator: $\eta_i = \|\nabla u_{h,i} - \mathbf{q}_{h,i}\|_{L^2(\Omega)}$

▶ Lower bound: $\ell_1^{\text{cmpl}} = \left(-\eta_1 + \sqrt{\eta_1^2 + 4\Lambda_{h,1}}\right)^2 / 4$

$$\ell_i^{\text{cmpl}} = \Lambda_{h,i} \left(1 + \lambda_1^{-1/2} \eta_i\right)^{-1}, \quad i = 2, 3, \dots$$

▶ Provided $\Lambda_{h,i} \leq 2(\lambda_i^{-1} + \lambda_{i+1}^{-1})^{-1}$

Comparison

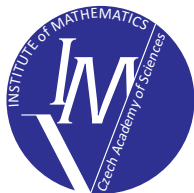


	1. Inclusions	2. CR elements	3. Complementarity
convergence	**	***	*
generality	***	*	**
a priori info	*	***	**
DOFs needed	*	**	***
algebraic err.	**	***	***
adaptivity	*	**	***

Thank you for your attention

Tomáš Vejchodský (vejchod@math.cas.cz)

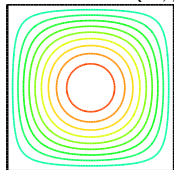
Institute of Mathematics
Czech Academy of Sciences



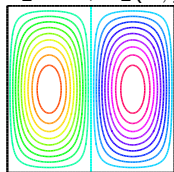
EMS School in Applied Mathematics, Kácov, May 29 – June 3, 2016

Square

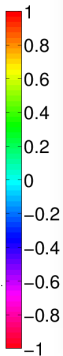
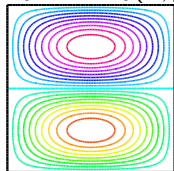
$$\lambda_1 = 2, u_1(x, y) = \sin(x) \sin(y)$$



$$\lambda_2 = 5, u_2(x, y) = \sin(2x) \sin(y)$$

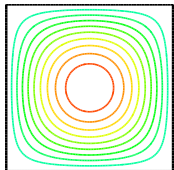
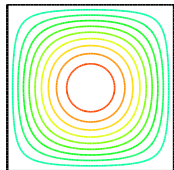


$$\lambda_3 = 5, u_3(x, y) = \sin(x) \sin(2y)$$

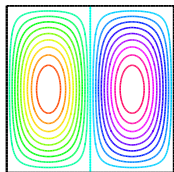
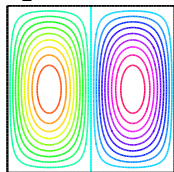


Two squares

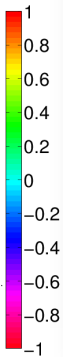
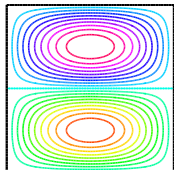
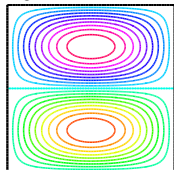
$$\lambda_1 = 2$$



$$\lambda_2 = 5$$

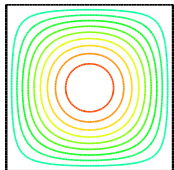
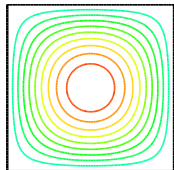


$$\lambda_3 = 5$$

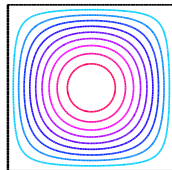
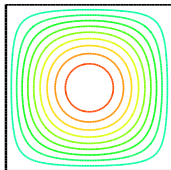


Two squares

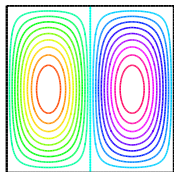
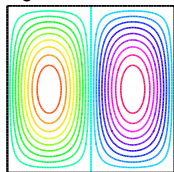
$\lambda_1 = 2$



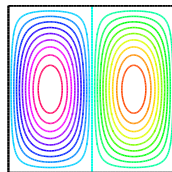
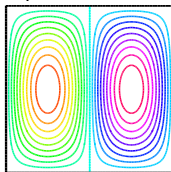
$\lambda_2 = 2$



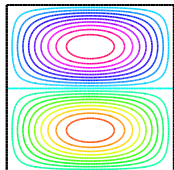
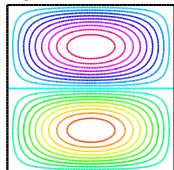
$\lambda_3 = 5$



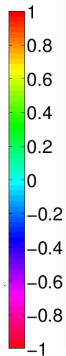
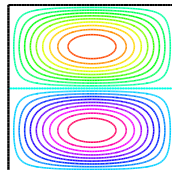
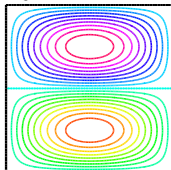
$\lambda_4 = 5$



$\lambda_5 = 5$

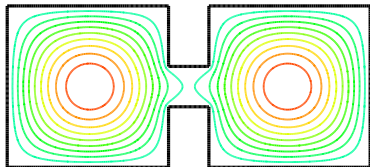


$\lambda_6 = 5$

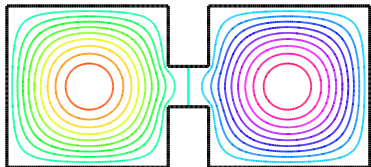


Dumbbell

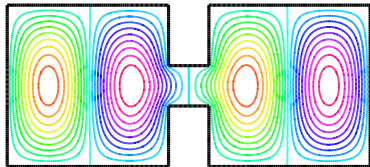
$\lambda_1 \approx 1.9556$



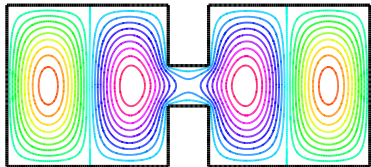
$\lambda_2 \approx 1.9605$



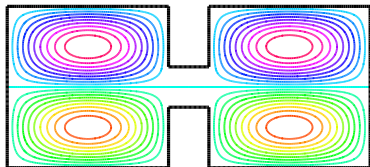
$\lambda_4 \approx 4.8288$



$\lambda_3 \approx 4.7996$



$\lambda_5 \approx 4.9960$



$\lambda_6 \approx 4.9960$

