

## TRANSPORTATION ROUTE

### Possibility 1.

Through the emergency exit door 1680 x 2400 mm (w x h). Access to the door is inclined.



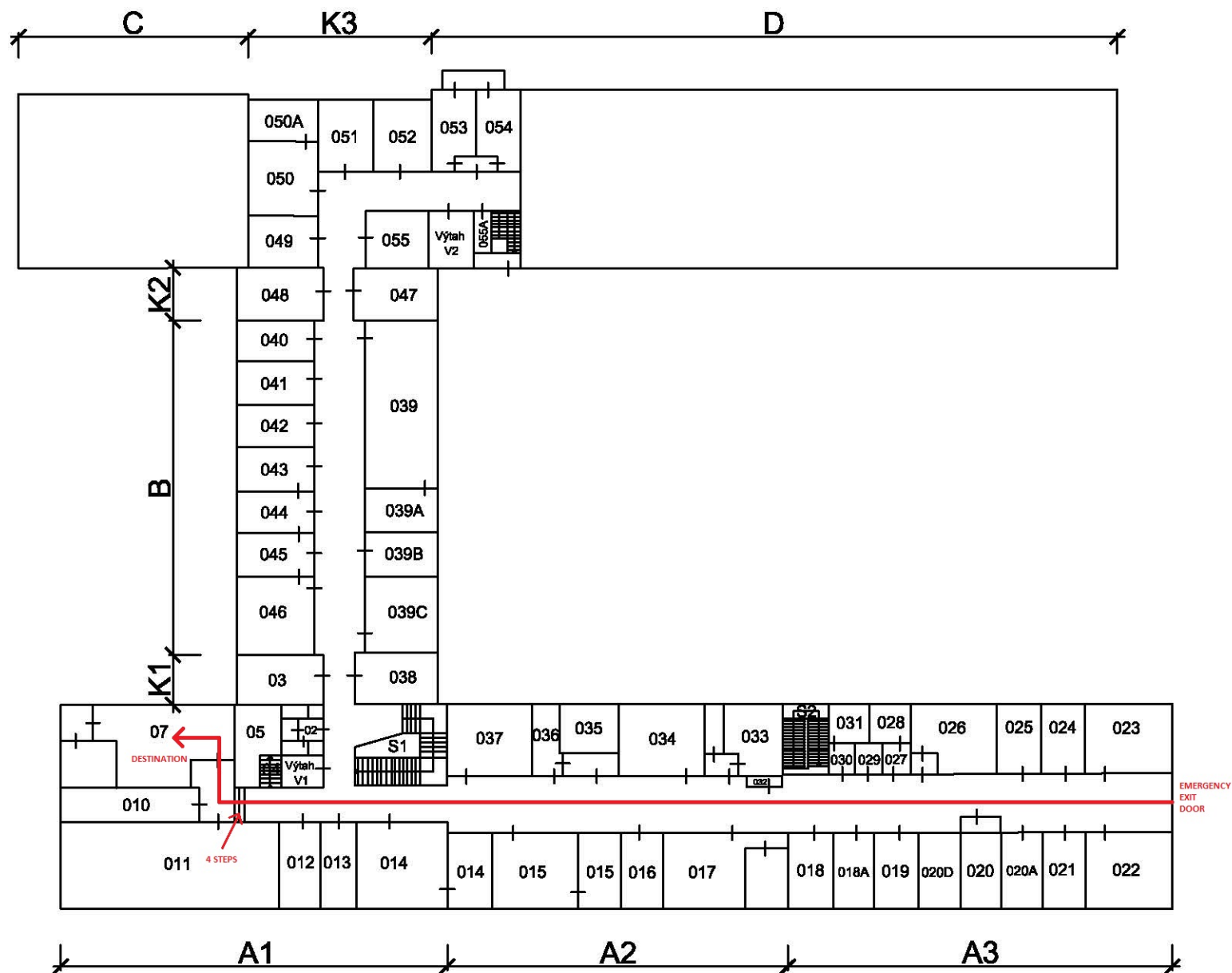
Through hallway (approx. 70 m). At the end of the hallway there are 4 steps.



To the room No. 07 through two consecutive doors. Within the planned reconstruction works these doors will be extended (minimum width will be 1180 mm and minimum height 1950 mm).



# HLAVNÍ BUDOVA 1PP



## Possibility 2.

Through the loading ramp.



Through 3 doors (minimum width 1500 mm, minimum height 2250 mm) to elevator (elevator – door 1700 x 1950 mm; maximum load 1000 kg).





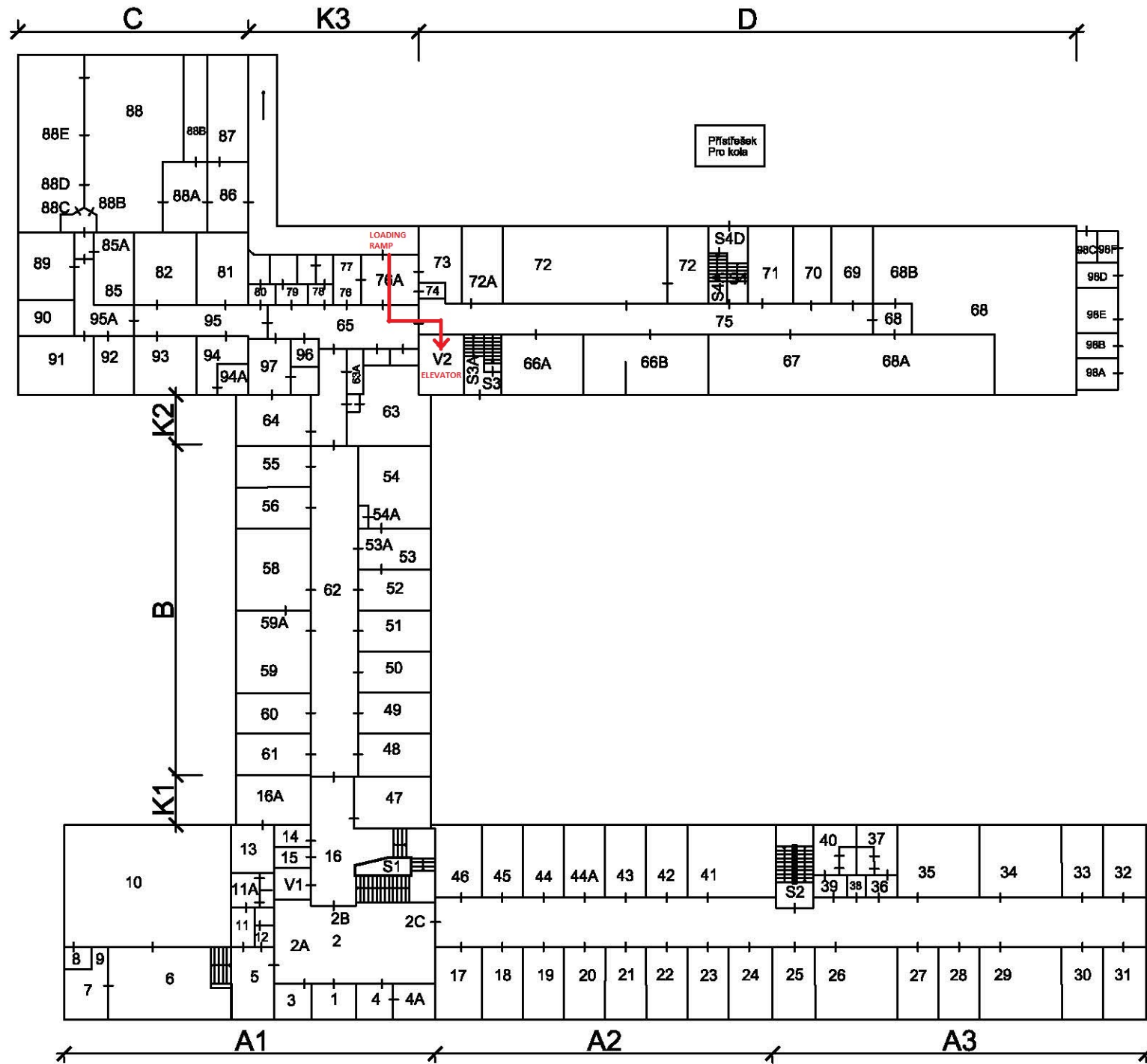
Approx. 50 m through hallway (2 doors of width 1500 mm and height 1950 mm). At the end of the hallway there are 4 steps.



To the room No. 07 through two consecutive doors. Within the planned reconstruction works these doors will be extended (minimum width will be 1180 mm and minimum height 1950 mm).



# HLAVNÍ BUDOVA 1NP



# HLAVNÍ BUDOVA 1PP

