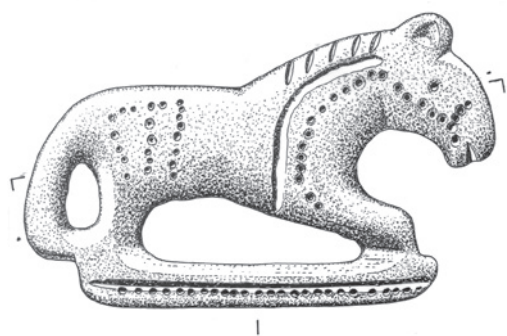


PRELIMINARY PROGRAMME

International Colloquium Archaeology in Contemporary Europe - ACE The Significance of the Past

*The very beginning of Europe?
Cultural and Social Dimensions of Early-Medieval Migration
and Colonisation (5th-8th century):*

BRUSSELS - MAY 17-19 2011



MAY, 17 2011

Location: Auditorium Vrije Universiteit Brussel, Pleinlaan 2, 1050 Brussels
<http://www.vub.ac.be/english/infoabout/campuses/index.html>

Evening lecture. G. HALSALL (University of York, UK) with key-note lecture *Archaeology and Migration: Rethinking the Debate*

Reception with drinks



PRELIMINARY PROGRAMME

MAY, 18 2011

Location: Hadewijch Auditorium in the Conscience building (Flemish Government), Koning Albert II-laan 15, 1210 Brussels

http://www.mobielvlaanderen.be/bereikbaarheidsgids/bestem_bru-no.php?a=13&nav=4

8:45h-9:15h: REGISTRATION

9:15h-9:30h: introduction by ACE-coordination (P. DEPAEPE, Inrap, F)

9:30h-9:45h: introduction by EC representative

9:45h-10:00h: opening speech by G. BOURGEOIS, Vice-Minister-President of the Flemish Government, Flemish Minister for Administrative Affairs, Local and Provincial Government, Civic Integration, Tourism and the Vlaamse Rand

SESSION IA: ELITE

10:00h-10:25h: I. BEDE (Université Parisi Panthéon-Sorbonne, F), *The status of horses in the society of the late Avars in the Carpathian Basin*

10:25h-10:50h: M.C.TRUC (Inrap/CRAHAM UMR6273/Université de Caen, F), *Un groupe de chefs francs à Saint-Dizier (Haute Marne, Champagne-Ardenne, France)?*

10:50h-11:20h: COFFEE

SESSION IB: NATURAL SCIENCES

11:20h-11:45h: D. PETERS (Frankfurt, D), C. KNIPPER (Mainz, D) & A.-F. MAURER (Mainz, D), *The Lombards' migration – an isotope case study from early medieval central Europe*

11:45h-12:10h: R. PANHUYSEN, L. SMITS, M. KARS & F. THEUWS (Amsterdam Archaeological Centre - University of Amsterdam, NL), *Bioarchaeological indicators of human mobility in early medieval Maastricht*

12:10h-12:30h: discussion session I

12:30h-13:30h: LUNCH

SESSION II: IDENTITY AND LANDSCAPE

13:30h-13:55h: S. BROOKES (UCL-Institute of Archaeology, London, UK), *The view from the sea: maritime migration and the colonised landscapes of Early Anglo-Saxon Kent.*

13:55h-14:20h: CHR. FERGUSON (University of Oxford, UK), *Winds on the Water: paths of migration across the North Sea.*

14:20h-14:45h: P.-J. DECKERS & D. TYS (VUB, Brussels, B), *The Flemish coastal plain within a North Sea context: Economy, power and identity*

14:45h-15:15h: COFFEE

15:15h-15:40h: S. MESSAL (Römisch-Germanische Kommission, Frankfurt/Main, D), *The Slavonisation of the south-western Baltic region.*

15:40h-16:05h: A. DE MAN (Universidade Nova de Lisboa, P), *Forms of Late Antique settlement in Lusitania.*

16:05h-16:30h: J. HENDRIKS (Amsterdam Archaeological Centre – University of Amsterdam, NL), *Transforming villa landscapes in Germania secunda. A case of appropriation or alienation?*

16:30h-16:55h: P. WALTON ROGERS (Anglosaxon Laboratory, York, UK), *In the borderlands: two sites on the edge of the former Iceni territory in East Anglia*

16:55h-17:15h: discussion session II

20:00h: Evening lecture on the history and issues of modern migrations by L. LUCASSEN (University of Leiden, NL), *Cross cultural migration as the engine of social change: a global historical perspective* (freely open to the general public).

Location: Centre for Fine Arts (BOZAR) – Zaal Studio, Ravensteinstraat 32, 1000 Brussels

<http://www.bozar.be/webpage.php?pageid=127&>



PRELIMINARY PROGRAMME

MAY, 19 2011

Location: Hadewijch Auditorium in the Conscience building (Flemish Government),
Koning Albert II-laan 15, 1210 Brussels
http://www.mobielvlaanderen.be/bereikbaarheidsgids/bestem_bru-no.php?a=13&nav=4

SESSION III: IDENTITY AND URBAN CENTRES

9:15h- 9:40h: L. VERSLYPE (UCL, B), *Continuity, transformation and emergence of the urbanized settlements through the Merovingian period along the northern edge of Neustria and Austrasia.*

9:40h- 10:05h: R. BRULET (Directeur du CRAN et pdt. de l'Institut INCAL, B), *Tournai, capitale du Bas-Empire et évolution au Haut Moyen-Âge*

10:05h-10:30h: A. VANDERHOEVEN (VIOE, Brussels, B), *The late roman and early medieval urban topography of Tongeren.*

10:30h-11:00h: COFFEE

11:00h-11:25h: L. BLACKMORE (Museum of London, UK), *The origins, development and decline of Lundenwic (London), from the 5th to 9th centuries*

11:25h-11:50h: J. BELTRÁN DE HEREDIA BERCERO (Cap del Conjunt Monumental, Barcelona, E), *Barcelona, de sede regia a capital condal: continuidades y cambios*

11:50h-12:10h: discussion session III

12:10h-13:10h: LUNCH

SESSION IVA: CEMETERIES

13:10h-13:35h: C. HILLS (Cambridge University, UK), *Spong Hill*

13:35h-14:00h: 13:35h-14:00h: D. JOUNEAU, M. GUILLON, et al. (Inrap, F), *Migration or acculturation? The Saint-Crespin cemetery case (Romilly-sur-Andelle, Eure, France): confrontation between biological anthropological facts and burial artefacts.*

14:00h-14:25h: A. WILLEMSSEN (National Museum of Antiquities, Leiden, NL), *Questioning migration: continuity and change in the cemetery of Rhenen (4th-8th century AD).*

14:25h-14:50h: R. ANNAERT (VIOE, Brussels, B), *Who was buried at the Broechem cemetery (5th-7th century AD)?*

14:50h-15:20h: COFFEE

SESSION IVB: MATERIAL CULTURE

15:20h-15:45h: L. VAN WERSCH (Ulg, Liège, B), *Ceramic and glass in the Mosan valley: picture of a changing culture between the late Vth and the VIIth century.*

15:45h-16:10h: D. NÖSLER (Wilhelmshaven, D), *Traditions in craft? Analyses of ceramics of the 'Dark Ages' from north-western Germany.*

16:10h-16:35h: J. SOULAT (Paris, F), *Les céramiques de type anglo-saxon le long des côtes de la Manche et leur parallèle avec le bassin de l'Escaut.*

16:35h-16:55h: Y. HOLLEVOET (Raakvlak, Bruges, B), *Material culture and ethnicity: the evidence of coastal Flanders*

16:55h-17:15h: discussion session IV

17:15h-17:45h: conclusion by F. THEUWS (University of Amsterdam, NL)

17:45h-19:00h: drink

