



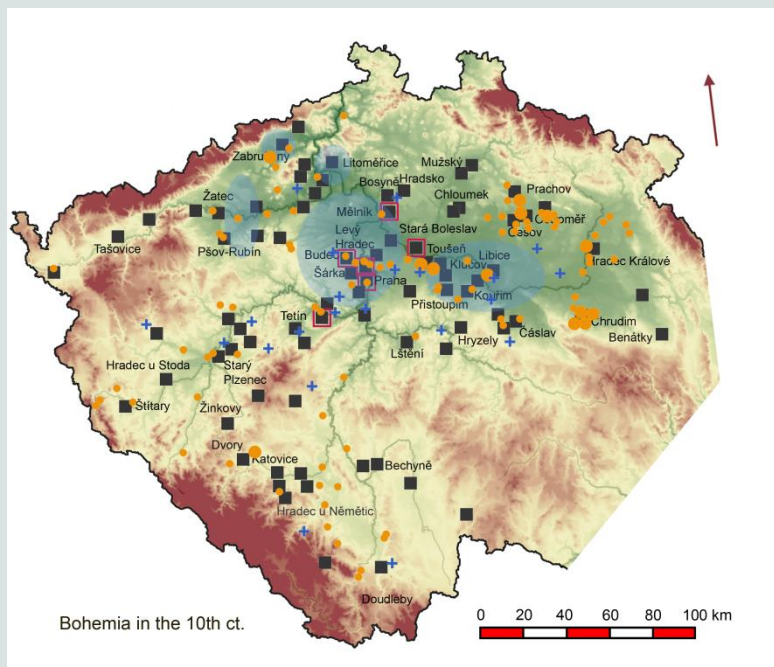
# INSTITUTE OF ARCHAEOLOGY OF THE CAS, PRAGUE, V.V.I.

## EVALUATION 2015

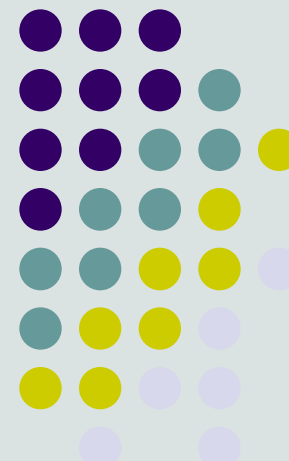
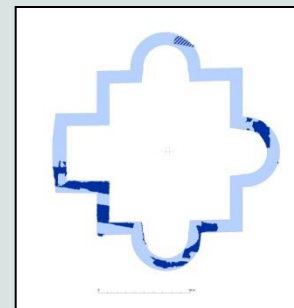
## DEPARTMENT OF MEDIEVAL

## ARCHAEOLOGY

by Ivana Boháčová



Prague-Vyšehrad 2014



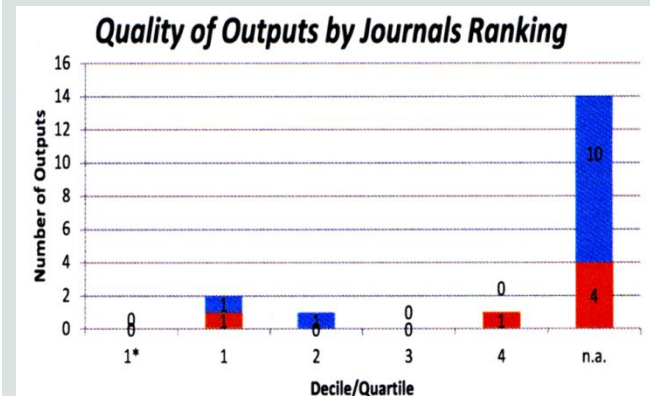
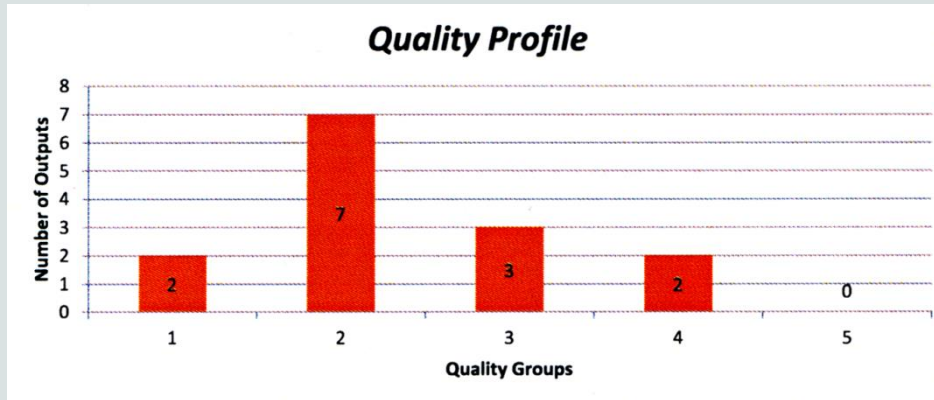
## Main research topics



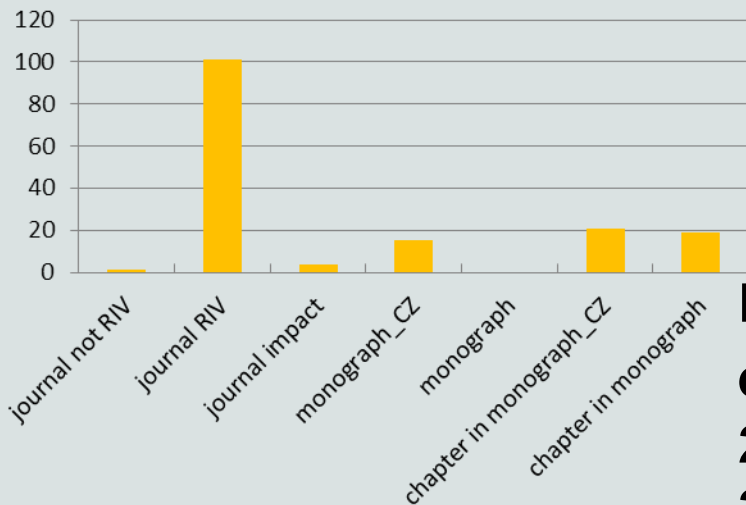
- ❑ **Processes of genesis and formation of state (centralisation of power structure)**  
from sites such as Prague, Budeč, Klecany, Libice nad Cidlinou, Libušín, Sázava, Stará Boleslav  
a: re-evaluation of the Přemyslid domain model  
b: process of Christianisation of the society  
(transformation of funerary rites, types and development of church architecture)
- ❑ **Beginnings of the Early Medieval Bohemia (settlement structure, formation of elites, cultural phenomena etc. in the course of 6<sup>th</sup>-9<sup>th</sup> centuries)**
- ❑ **Every-day life (material culture, technology)**
- ❑ **Interdisciplinary research – is involved in majority of the topics, especially: chronological studies (independent scientific dating), material culture studies, GIS applications etc.**
- ❑ **Settlement patterns and material culture – the so-called High Medieval transformation (till 2012 including castellology)**



# Outputs (evaluated 14)



**RIV outputs in 2010–2014: together 160 (for bibliometry 18)**

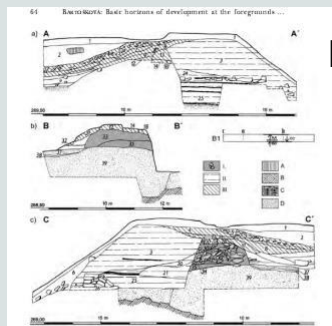
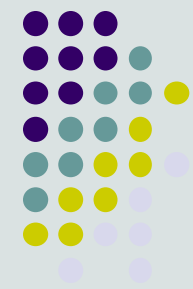


**Is it necessary to change the publication politics?**

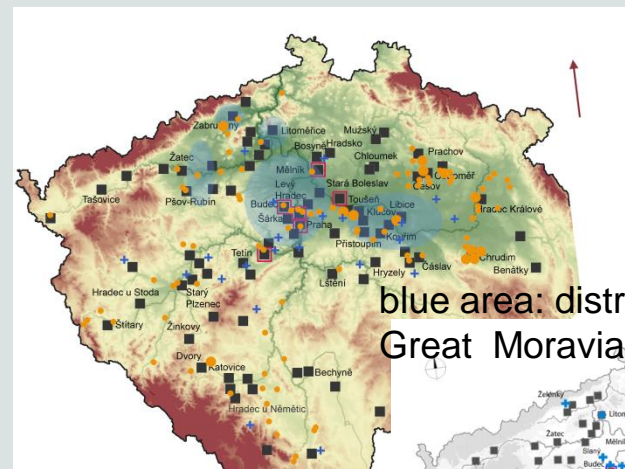
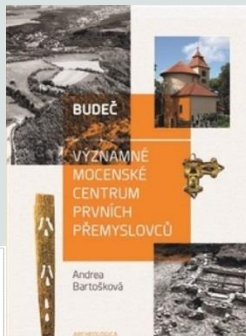
**DMA contribution to the Institute's evaluation, according to Quality profile: 24 % of Institute's evaluated outputs – 24 % are in the two highest Quality groups**



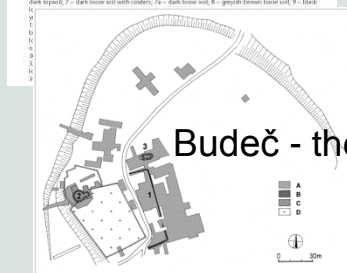
# Examples of main research outputs



**Budeč**

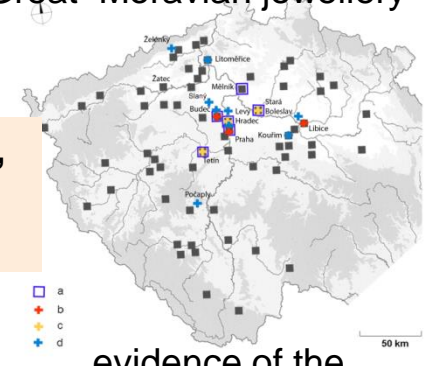


blue area: distribution of the Great Moravian jewellery

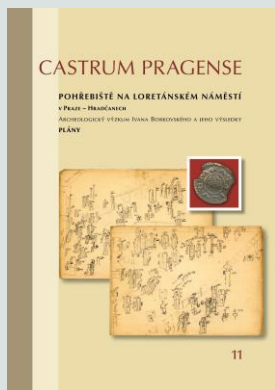


**Budeč - the Ducal curia**

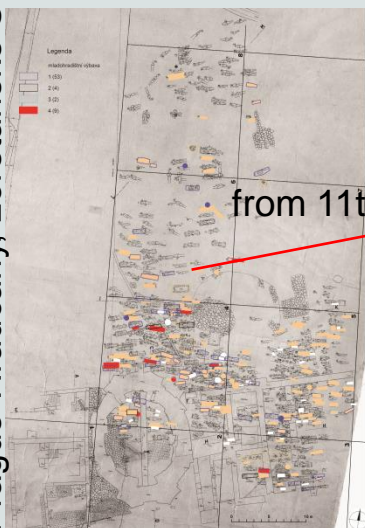
**Bohemia and Prague, 9th-10th C.: state of the knowledge**



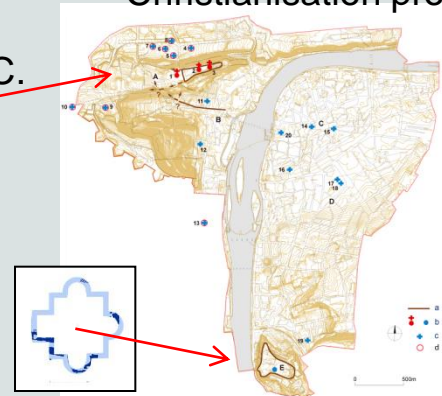
evidence of the Christianisation process



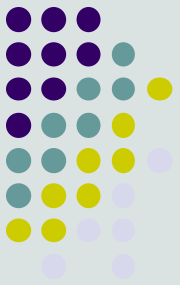
**Prague-Hradčany, Loretánské Sq.**



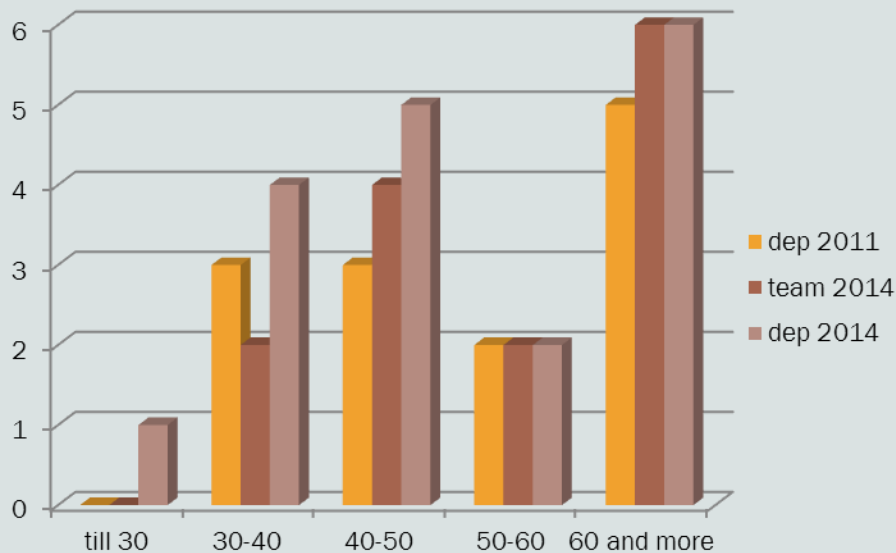
from 11th C.



# Age and personal structure, activities 2011–2014



**Evaluated team 2015: 14 researchers, incl. retired researchers**



## Human sources (department together) Person / work load (approx.)

Archaeology, fundamental research: 12 pers.  
/6.4 w. l.

Archaeology, field-work: 2 pers./1.1

Archaeology, educational activities: 4 pers./0.4

Work for institution, edd. boards: 1 pers./0.4

Work for institution, management: 3 pers./1

Prague archaeology project: 5 pers./1.2

**Current state of the department: 14 researchers, incl. retired researchers**

**outside of team:** since 2013 3 pers. focusing on the research project of urban archaeology;

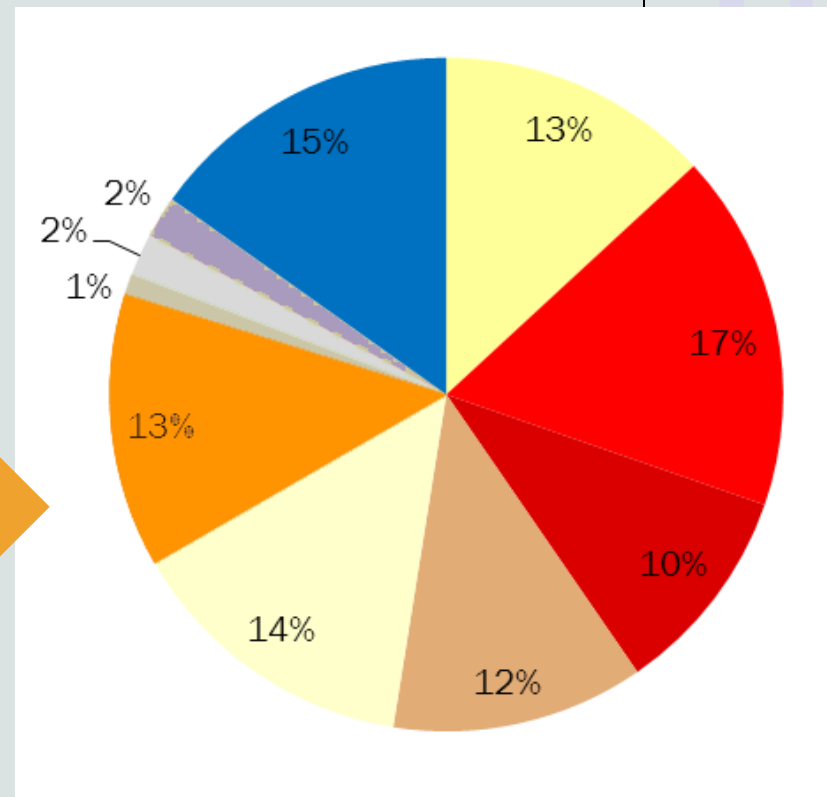
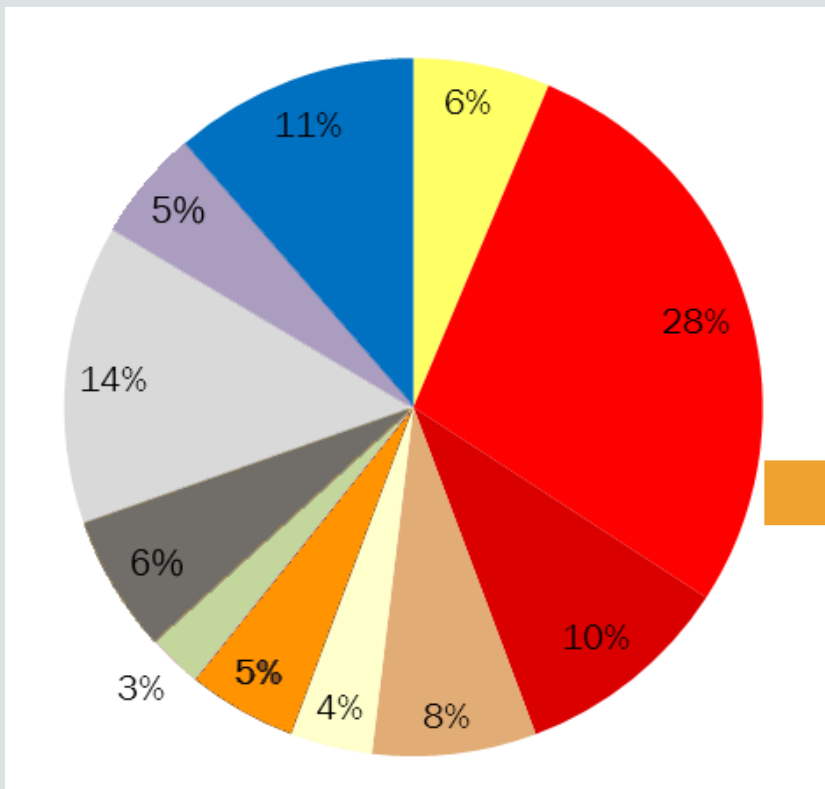
**Department of Medieval Archaeology staff change, 2015–2016:**

- personnel change in the team (1 person, cat. 30–40 years)
- new competition for urban archaeology field, prior the end of 2015;
- personnel change: competition 2016-2017: for a research-worker focusing on the EM Bohemia beginnings and interregional studies (1 person, cat. till 30)





# Structure of activities in 2010–2014, and a vision for future



- Formation of EM Europe
 ■ State formation
 ■ Christianisation
 ■ History and methodology of excavations
 ■ Urban archaeology
- Every-day life
 ■ Medieval transformation
 ■ Castellology
 ■ Rescue excavations
 ■ Educational activities
 ■ Work for institution

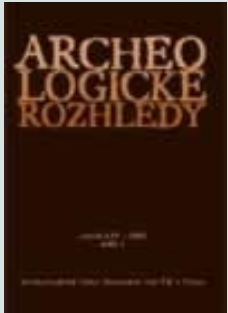


# Research for practice – Service for research



Rescue excavations till 2014: **about 14 %** of the team capacity

Applied research, service for research, work for institution:

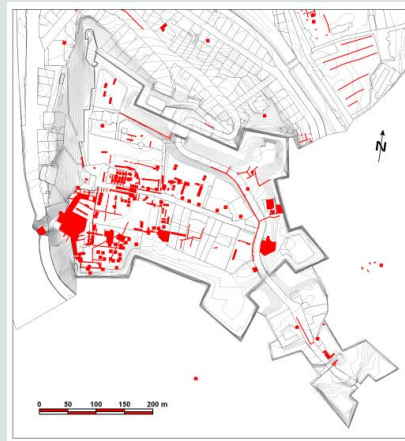


**about 50%** of team capacity, work for institution: **about 11%**  
a series of projects focusing on research methodology, evidence and database systems, sustainability of archaeological cultural heritage (protection and effective future evaluation).

Editor-in-chief:  
DMA, Martin Ježek



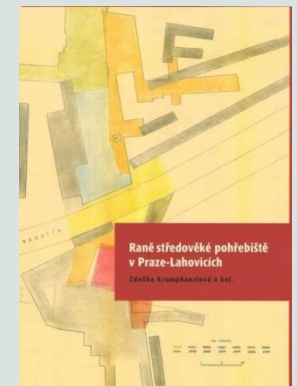
Rescue excavations – Northern Bohemia coal basin, Petr Čech



Rescue long-term excavations,  
Prague – Vyšehrad  
B. Nechvátal - L. Varadzin



Eds.:  
I. Boháčová  
P. Sommer



Eds.: J. Klápště (DMA)  
M. Šmolíková



**participation in organisation of research (esp. in Central Europe):**  
**editorial boards, institutions, EAC, councils of sciences,**  
**conference organisations etc.**

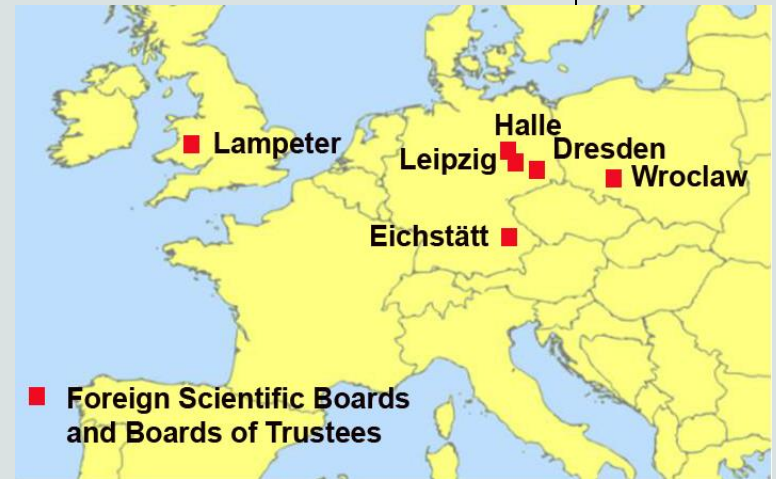
### **International Boards and Committees:**

**P. Sommer:** Commission of the History of Architecture  
ICOMOS, Wroclaw • Comité permanent de l'UISPP •  
Europäisches Romanik-Zentrum Halle • Corresponding  
member of the German Archaeological Institute

**J. Klápště:** Medieval Europe Research Congress  
Committee • Corresponding member of the German  
Archaeological Institute

**T. Durdík:** Comité Castella Maris Baltici • Permanent  
Board of the Castrum Bene Society

**J. Mařík:** Europae Archaeologiae Consilium • Scientific  
Board of the EAA Annual Meeting 2013



### **Editorial Boards:**

Archeologické rozhledy (WOS) • Archaeologica Pragensia •  
Památky Archeologické (WOS) • Archaeologia historica Polona •  
Zeitschrift für Archäologie des Mittelalters • Wratislavia antiqua •  
Castellologica Bohemica, till 2012 • Studia archaeologica Slovaca •  
Archaeologia historica • Ruralia • Studia Mediaevalia Bohemica •  
Český časopis historický • Zprávy památkové péče, till 2012 •  
Hereditas monasteriorum • Miscellanea historica • Staletá Praha •  
Forum urbes medii aevi • Kwartalnik historii kultury materialnej •  
editorial board Geistwissenschaftliches Zentrum Leipzig





# Popularisation



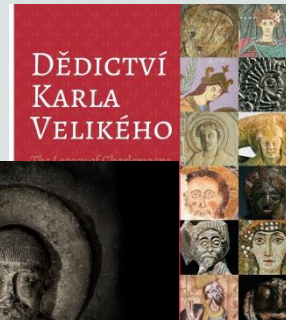
Popularisation as a part of post-research activities  
– presentation of selected results of research:

Participation in numerous short-term as well as permanent expositions,  
accompanying publications, archaeological site presentations etc.

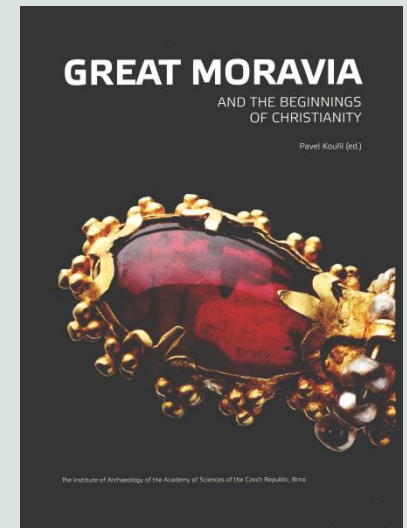


Prague-Vyšehrad, project of recovery  
of the archaeological site, I. Boháčová

Dep. MA team participation  
esp. in a project led by →  
the IA of the CAS, Brno, v.v.i.  
and other



**The Benedicines...**



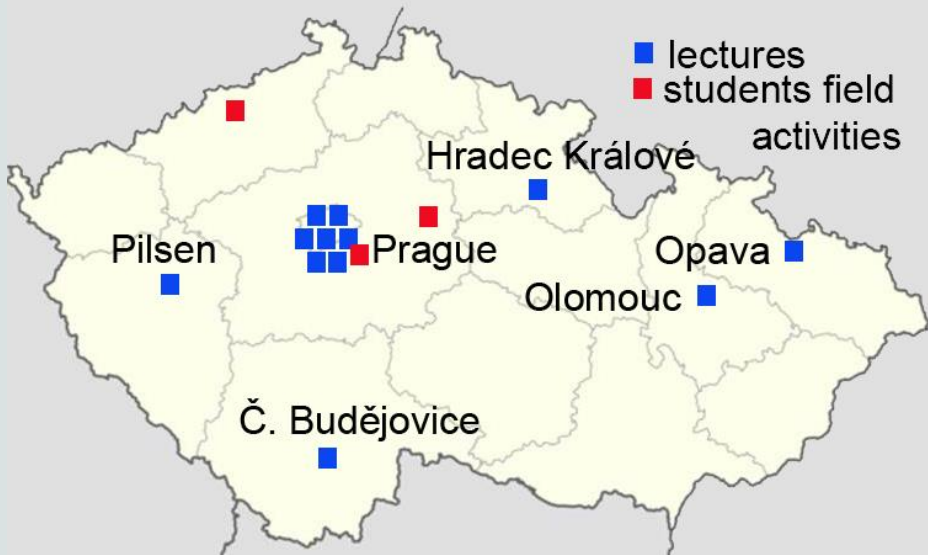
# Educational activities



**Predominantly lecture one-semester-long courses,  
supervising students**

especially in Prague (Charles Uni, Uni of Chemistry and Technology, Czech Technical University), Fac. of Art of Uni Olomouc, České Budějovice, Hradec Králové, Pilsen etc.

Occasionally, students (incl. foreign) are involved in various types of research projects.



# On-going projects:

## 1-3 Research for practice

**as a source for fundamental research**



**1 Integrate Information System of Prague Archaeological Sources: an on-line GIS system as a part of the Archaeological Map of the Czech Republic (2013-2017, Min. of Culture of the Czech Rep.)**

IA CAS, Prague, v.v.i – National Heritage Institute, dep. Prague

**Example of creating a general information system exploiting the first-class archaeological site of Prague**

by I. Boháčová

**2 Heritage and long-term systematic preventive excavations at the Prague-Vyšehrad Stronghold (since 1920s), since 1966 the IA CAS, Prague, v.v.i**

**Example of continuity in the heritage as well as unearthing the 'archaeological treasure trove'**

by L. Varadzin

**3 Heritage and long-term systematic preventive excavations at the stronghold of Libice (Central Bohemia, Kolin distr.) Since 1890s**

**Example of application of new technologies for research as well as heritage management**

by J. Mařík

**4 Sázava – terminated long-term excavations (1968-1995) of Medieval monastery**

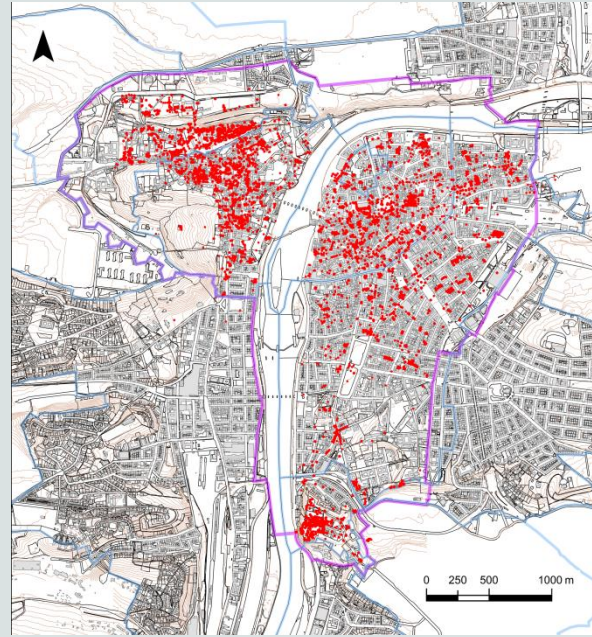
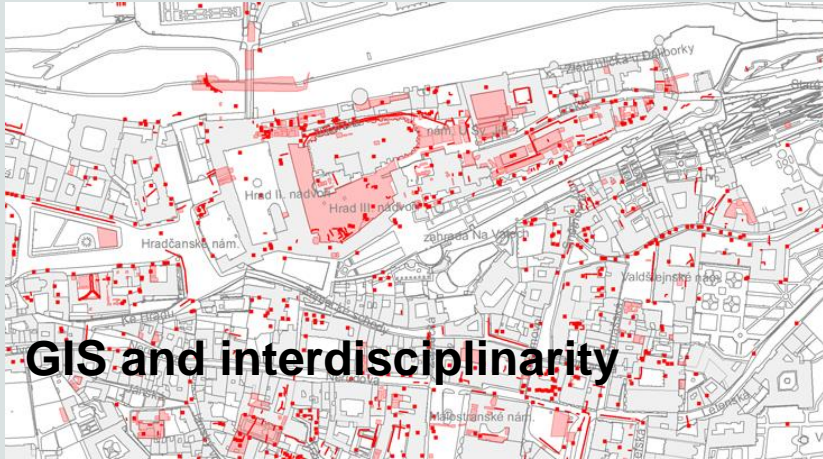
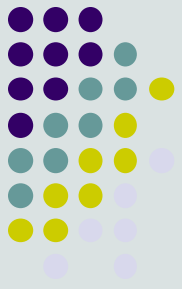
**Example of Processing the key archaeological site**

by P. Sommer





# 1<sup>st</sup> example: Integrate information system of Prague archaeological sources (2013-2017, Min. of Culture)

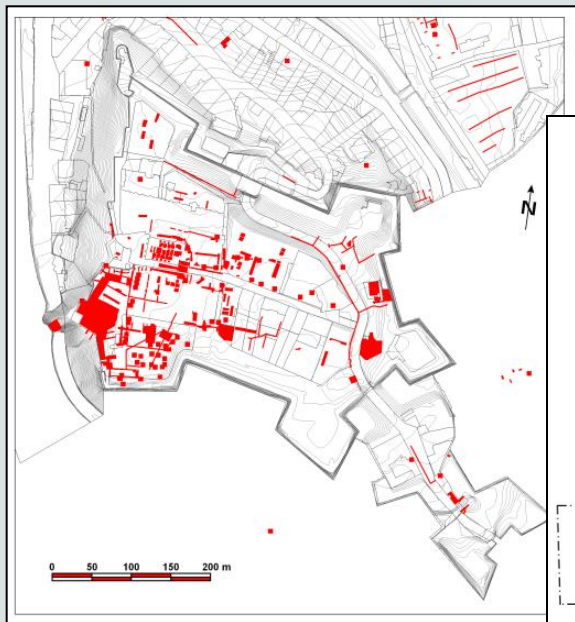
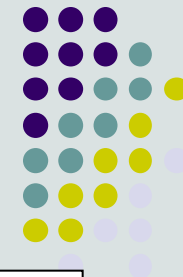


**on-line information system – the prerequisite for missing systematic research**

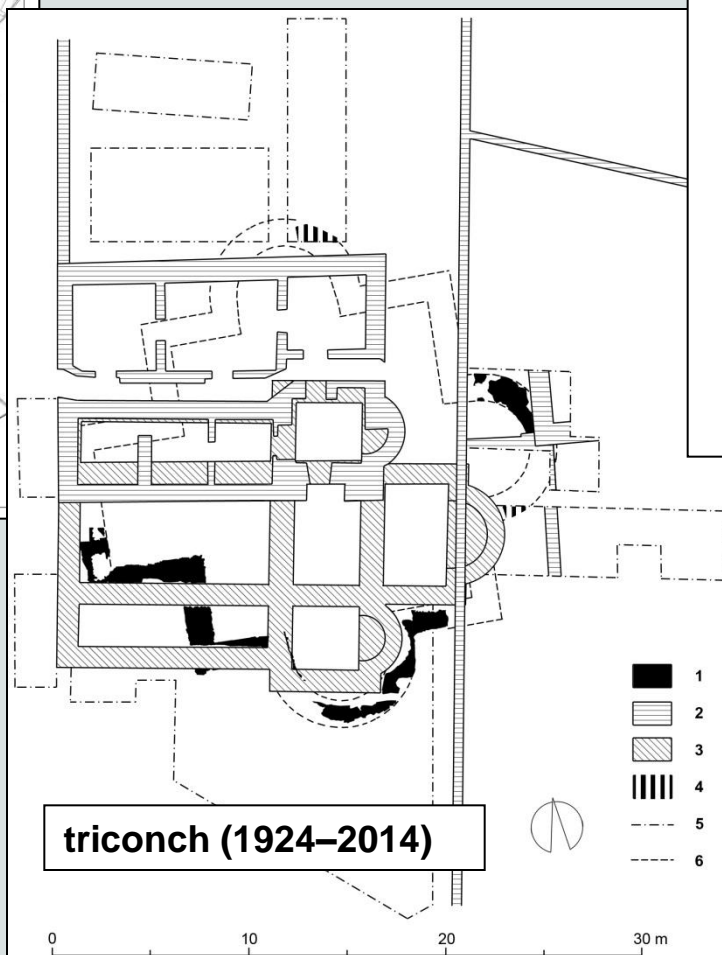




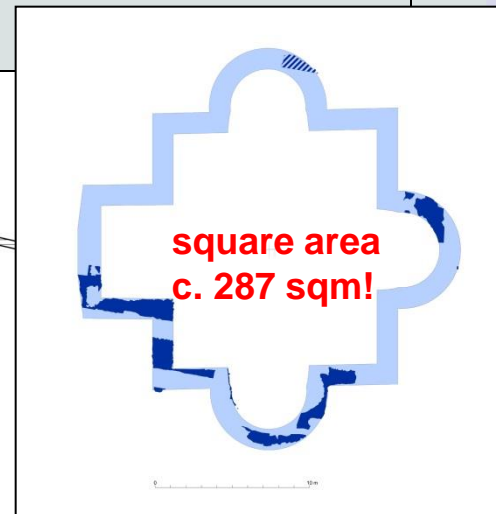
# 2<sup>nd</sup> example: Long-term excavations of Prague-Vyšehrad Stronghold



excavated areas 1924–2010  
- since 1966 conducted by  
the IA of the CAS



triconch (1924–2014)



triconch (reconstr. 2014)



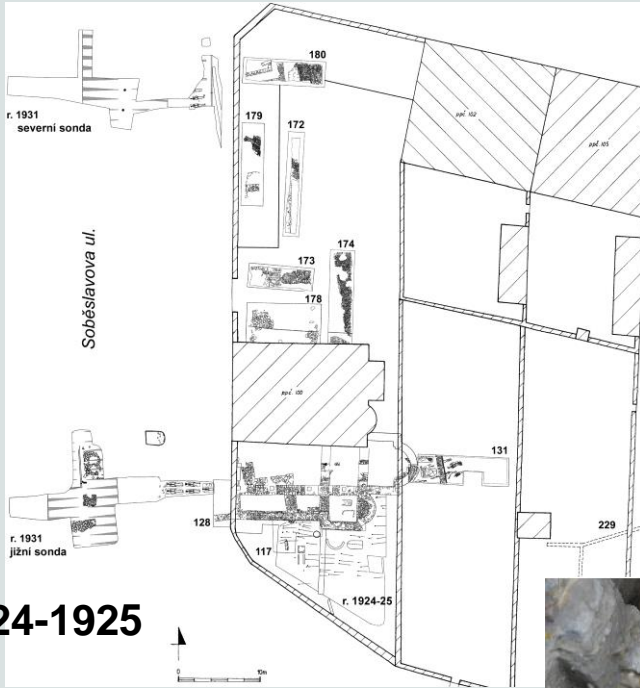
previous reconstr. (1970)



# Archaeological site with St Lawrence basilica: from long-term excavations and heritage → to recent research

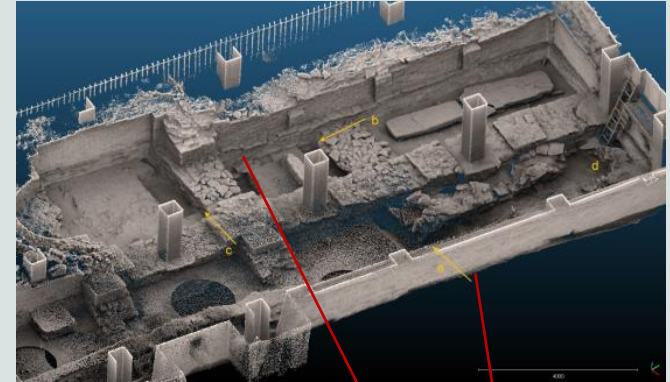


1970-2011



1924-1925

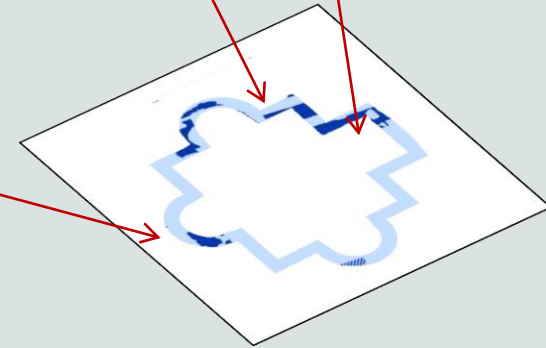
project of the site  
recovery 2011



1934

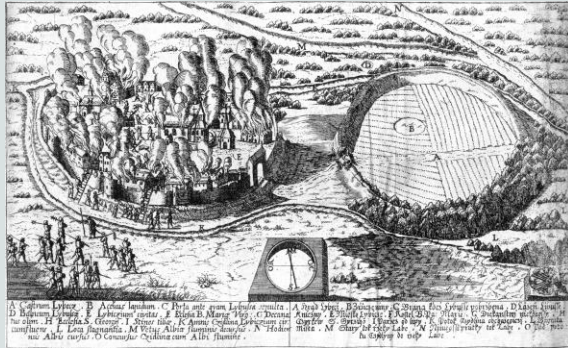


2014

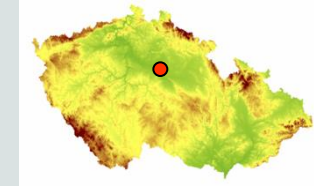




# 3<sup>RD</sup> example: Libice – long-term excavations of Early Medieval stronghold



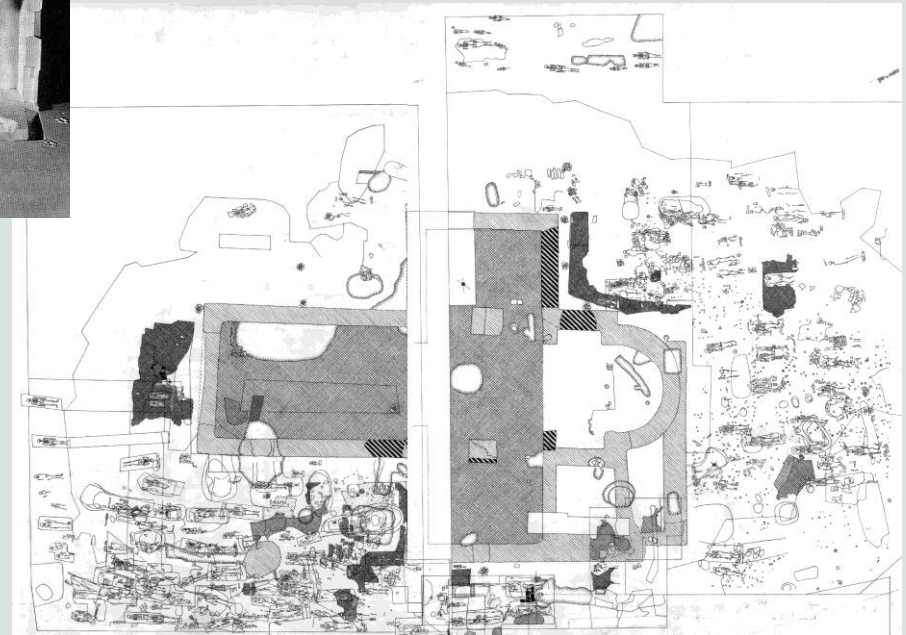
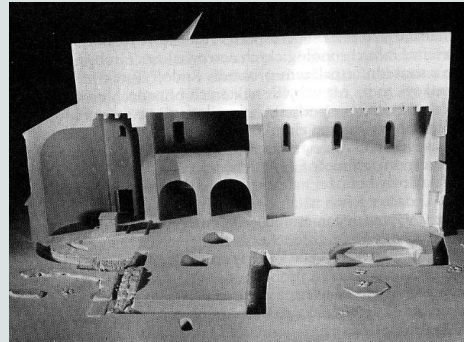
**1890s:** excavations conducted by non-professional archeologists



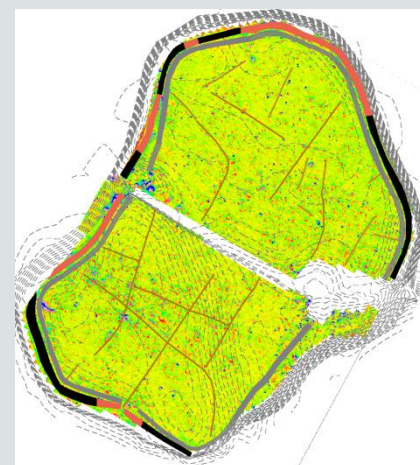
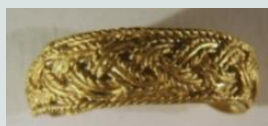
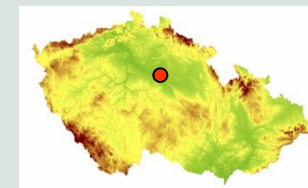
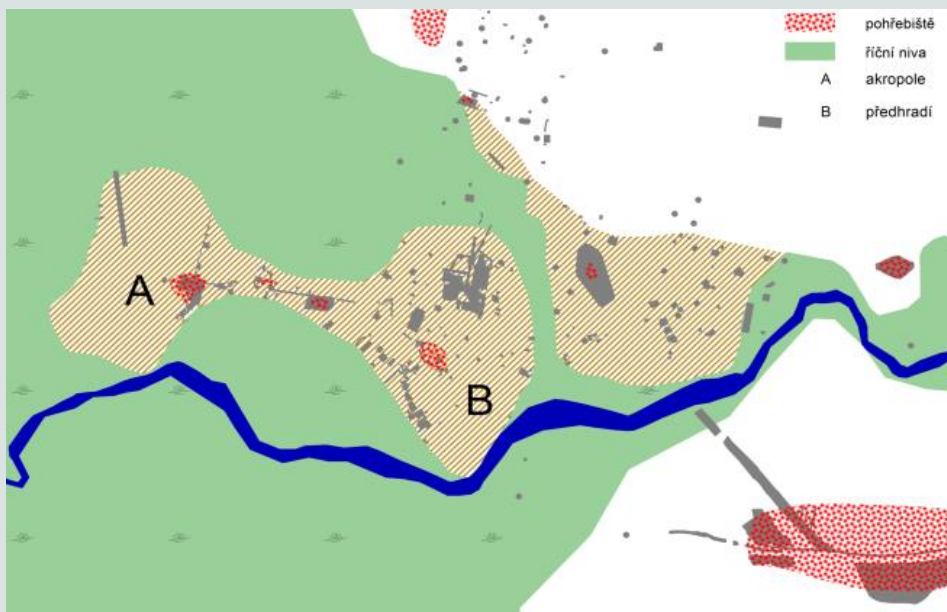
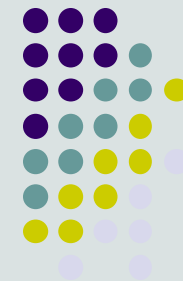
**1949–1973:** systematic excavations of the inner bailey (5.000 m<sup>2</sup>, 4,5 % of the inner bailey area)

Since 1974:

- Rescue excavations (51.000 m<sup>2</sup>)
- GIS mapping
- Reconstruction of agglomeration
- Palaeobotanical research
- Economic model of the hinterland



# Libice: non-destructive research



**2008–2015:**  
non-destructive  
research of the  
inner bailey:

- Aerial photographs
- Terrain modelling
- Geophysics
- Surface collections
- Metal detectors





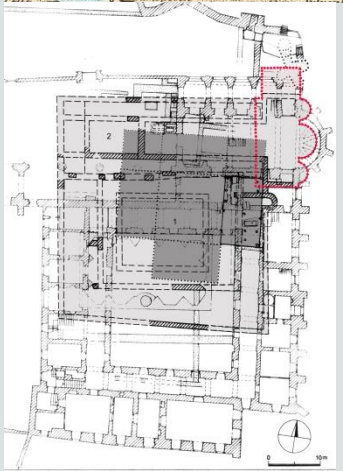
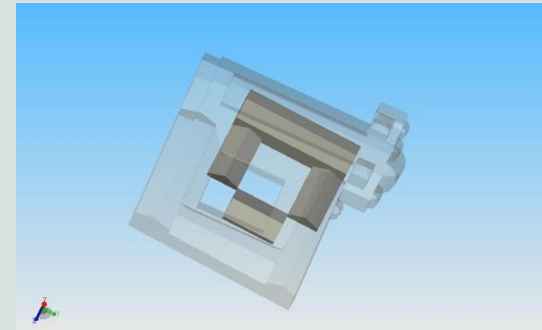
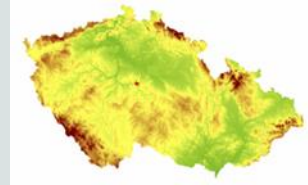
# 4<sup>TH</sup> example: Sázava – terminated long-term excavations of Medieval monastery, Processing

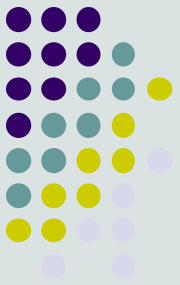


**1968-1995:** systematic excavations of the Institut of Archaeology of the CAS (earliest wooden buildings, church, monastery, burial grounds, laical settlement)

**At present:** work on the concluding monography (2018)

**Themes:** earliest Czech sacral architecture, liturgy, monastic culture, burial practices, laical hinterland





**Thank you for your attention**

**DEPARTMENT OF MEDIEVAL  
ARCHAEOLOGY  
2015**

