

Solving ill posed problems: Young measures, K-convergence and Lax equivalence theorem for nonlinear systems

Eduard Feireisl

Institute of Mathematics, Academy of Sciences of the Czech Republic, Prague
Technische Universität Berlin

ENUMATH 2019, Egmond aan Zee, 30 September - 4 October 2019



Einstein Stiftung Berlin
Einstein Foundation Berlin



Prologue - Lax equivalence principle



Peter D. Lax

Formulation for **LINEAR** problems

- **Stability** - uniform bounds of approximate solutions
- **Consistency** - vanishing approximation error

\implies

- **Convergence** - approximate solutions converge to exact solution

Euler system of gas dynamics

Equation of continuity – Mass conservation

$$\partial_t \varrho + \operatorname{div}_x \mathbf{m} = 0, \quad \mathbf{m} = \varrho \mathbf{u}$$

Momentum equation – Newton's second law

$$\partial_t \mathbf{m} + \operatorname{div}_x \frac{\mathbf{m} \otimes \mathbf{m}}{\varrho} + \nabla_x p(\varrho) = 0, \quad p(\varrho) = a\varrho^\gamma$$

Impermeability and/or periodic boundary condition

$$\mathbf{u} \cdot \mathbf{n}|_{\partial\Omega} = 0, \quad \Omega \subset \mathbb{R}^d, \quad \text{or } \Omega = \mathbb{T}^d$$

Initial state

$$\varrho(0, \cdot) = \varrho_0, \quad \mathbf{m}(0, \cdot) = \mathbf{m}_0$$



Leonhard Paul
Euler
1707–1783

Classical solutions

- **Local existence.** Classical solutions exist locally in time as long as the initial data are regular and the initial density strictly positive
- **Finite time blow-up.** Classical solutions develop singularity (become discontinuous) in a *finite* time for a fairly generic class of initial data



Mythology concerning Euler equations in several dimensions

- **Existence.** The long time existence of (possibly weak) solutions is not known
- **Uniqueness.** There is no (known) selection criterion to identify a unique solution (semiflow)
- **Computation.** Oscillatory solutions cannot be visualized by numerical simulation (weak convergence)

Weak (distributional) solutions



Jacques
Hadamard
1865–1963



Laurent
Schwartz
1915–2002

Mass conservation

$$\int_B [\varrho(t_2, \cdot) - \varrho(t_1, \cdot)] dx = - \int_{t_1}^{t_2} \int_{\partial B} \varrho \mathbf{u} \cdot \mathbf{n} dS_x dt$$

$$\left[\int_{\Omega} \varrho \varphi dx \right]_{t=0}^{t=\tau} = \int_0^{\tau} \int_{\Omega} [\varrho \partial_t \varphi + \mathbf{m} \cdot \nabla_x \varphi] dx dt, \quad \mathbf{m} \equiv \varrho \mathbf{u}$$

Momentum balance

$$\begin{aligned} & \int_B [\mathbf{m}(t_2, \cdot) - \mathbf{m}(t_1, \cdot)] dx \\ &= - \int_{t_1}^{t_2} \int_{\partial B} [\mathbf{m} \otimes \mathbf{u} \cdot \mathbf{n} + p(\varrho) \mathbf{n}] dS_x dt \\ & \quad \left[\int_{\Omega} \mathbf{m} \cdot \varphi dx \right]_{t=0}^{t=\tau} \\ &= \int_0^{\tau} \int_{\Omega} \left[\mathbf{m} \cdot \partial_t \varphi + \frac{\mathbf{m} \otimes \mathbf{m}}{\varrho} : \nabla_x \varphi + p(\varrho) \operatorname{div}_x \varphi \right] dx dt \end{aligned}$$

Time irreversibility – energy dissipation

Energy

$$\mathcal{E} = \frac{1}{2} \frac{|\mathbf{m}|^2}{\varrho} + P(\varrho), \quad P'(\varrho)\varrho - P(\varrho) = p(\varrho)$$

$$p' \geq 0 \Rightarrow [\varrho, \mathbf{m}] \mapsto \begin{cases} \frac{1}{2} \frac{|\mathbf{m}|^2}{\varrho} + P(\varrho) & \text{if } \varrho > 0 \\ P(\varrho) & \text{if } |\mathbf{m}| = 0, \varrho \geq 0 \\ \infty & \text{otherwise} \end{cases} \quad \text{is convex l.s.c.}$$

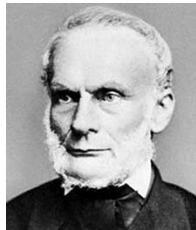
Energy balance (conservation)

$$\partial_t \mathcal{E} + \operatorname{div}_x \left(\mathcal{E} \frac{\mathbf{m}}{\varrho} \right) + \operatorname{div}_x \left(p \frac{\mathbf{m}}{\varrho} \right) = 0$$

Energy dissipation

$$\partial_t \mathcal{E} + \operatorname{div}_x \left(\mathcal{E} \frac{\mathbf{m}}{\varrho} \right) + \operatorname{div}_x \left(p \frac{\mathbf{m}}{\varrho} \right) \leq 0$$

$$E = \int_{\Omega} \mathcal{E} \, dx, \quad \partial_t E \leq 0, \quad E(0+) = \int_{\Omega} \left[\frac{1}{2} \frac{|\mathbf{m}_0|^2}{\varrho_0} + P(\varrho_0) \right] dx$$



Rudolf
Clausius
1822–1888

Wild solutions?



Charles Hermite [1822-1901]

In a letter to Stieltjes

I turn with terror and horror from this lamentable scourge of continuous functions with no derivatives

Known facts concerning global solvability

- Existence of infinitely many weak solution for any continuous initial data (Chiodaroli, DeLellis–Széehelyhidi, EF...)
- Existence of “many” initial data that give rise to infinitely many weak solutions satisfying the energy inequality (Chiodaroli, EF, Luo, Xie, Xin...)
- Existence of smooth initial data that ultimately give rise to infinitely many weak solutions satisfying the energy inequality (Kreml et al)
- Weak–strong uniqueness in the class of admissible weak solutions (Dafermos)

III posedness

Theorem [A.Abbatiello, EF 2019]



Anna
Abbatiello
(TU Berlin)

Let $d = 2, 3$. Let ϱ_0, \mathbf{m}_0 be given such that

$$\varrho_0 \in \mathcal{R}, \quad 0 \leq \underline{\varrho} \leq \varrho_0 \leq \bar{\varrho},$$

$$\mathbf{m}_0 \in \mathcal{R}, \quad \operatorname{div}_x \mathbf{m}_0 \in \mathcal{R}, \quad \mathbf{m}_0 \cdot \mathbf{n}|_{\partial\Omega} = 0.$$

Let $\{\tau_i\}_{i=1}^{\infty} \subset (0, T)$ be an arbitrary (countable dense) set of times.

Then the Euler problem admits infinitely many weak solutions ϱ, \mathbf{m} with a strictly decreasing total energy profile such that

$$\varrho \in C_{\text{weak}}([0, T]; L^\gamma(\Omega)), \quad \mathbf{m} \in C_{\text{weak}}([0, T]; L^{\frac{2\gamma}{\gamma+1}}(\Omega; \mathbb{R}^d))$$

but

$t \mapsto [\varrho(t, \cdot), \mathbf{m}(t, \cdot)]$ is not strongly continuous at any τ_i

FV numerical scheme

$$(\varrho_h^0, \mathbf{u}_h^0) = (\Pi_{\mathcal{T}} \varrho_0, \Pi_{\mathcal{T}} \mathbf{u}_0)$$

$$D_t \varrho_K^k + \sum_{\sigma \in \mathcal{E}(K)} \frac{|\sigma|}{|K|} F_h(\varrho_h^k, \mathbf{u}_h^k) = 0$$

$$D_t (\varrho_h^k \mathbf{u}_h^k)_K + \sum_{\sigma \in \mathcal{E}(K)} \frac{|\sigma|}{|K|} \left(\mathbf{F}_h(\varrho_h^k \mathbf{u}_h^k, \mathbf{u}_h^k) + \overline{p(\rho_h^k)} \mathbf{n} - h^\beta [[\mathbf{u}_h^k]] \right) = 0.$$

Discrete time derivative

$$D_t r_K^k = \frac{r_K^k - r_K^{k-1}}{\Delta t}$$

Upwind, fluxes

$$\text{Up}[r, \mathbf{v}] = \bar{r} \bar{\mathbf{v}} \cdot \mathbf{n} - \frac{1}{2} |\bar{\mathbf{v}} \cdot \mathbf{n}| [[r]]$$

$$F_h(r, \mathbf{v}) = \text{Up}[r, \mathbf{v}] - h^\alpha [[r]]$$



**Mária
Lukáčová
(Mainz)**



**Hana
Mizerová
(Bratislava)**

Consistent approximation

Equation of continuity

$$\int_0^T \int_{\Omega} [\varrho_n \partial_t \varphi + \mathbf{m}_n \cdot \nabla_x \varphi] dx dt = e_{1,n}[\varphi]$$

Momentum equation

$$\int_0^T \int_{\Omega} \left[\mathbf{m}_n \cdot \partial_t \varphi + \frac{\mathbf{m}_n \otimes \mathbf{m}_n}{\varrho_n} : \nabla_x \varphi + p(\varrho_n) \operatorname{div}_x \varphi \right] dx dt = e_{2,n}[\varphi]$$

Stability - bounded energy

$$\mathcal{E}(\varrho_n, \mathbf{m}_n) \equiv \int_{\Omega} \left[\frac{1}{2} \frac{|\mathbf{m}_n|^2}{\varrho_n} + P(\varrho_n) \right] dx \lesssim 1$$

Consistency

$$e_{1,n}[\varphi] \rightarrow 0, e_{2,n}[\varphi] \rightarrow 0 \text{ as } n \rightarrow \infty$$

Weak vs strong convergence

Weak convergence

$$\varrho_n \rightarrow \varrho \text{ weakly-} (*) L^\infty(0, T; L^\gamma(\Omega))$$

$$\mathbf{m}_n \rightarrow \mathbf{m} \text{ weakly-} (*) L^\infty(0, T; L^{\frac{2\gamma}{\gamma+1}}(\Omega; \mathbb{R}^d))$$

Strong convergence (Theorem EF, M.Hofmanová)

- Suppose

$$\Omega \subset \mathbb{R}^d \text{ bounded}$$

$\varrho_n \rightarrow \varrho, \mathbf{m}_n \rightarrow \mathbf{m}$ strongly a.a. pointwise in \mathcal{U} open, $\partial\Omega \subset \mathcal{U}$

- Then the following is equivalent:

ϱ, \mathbf{m} weak solution to the Euler system

\Leftrightarrow

$\varrho_n \rightarrow \varrho, \mathbf{m}_n \rightarrow \mathbf{m}$ strongly (pointwise) in Ω



**Martina
Hofmanová
(Bielefeld)**

Dissipative solutions – limits of numerical schemes

Equation of continuity

$$\partial_t \boxed{\varrho} + \operatorname{div}_x \mathbf{m} = 0$$

Momentum balance

$$\partial_t \boxed{\mathbf{m}} + \operatorname{div}_x \left(\frac{\mathbf{m} \otimes \mathbf{m}}{\varrho} \right) + \nabla_x p(\varrho) = -\operatorname{div}_x (\mathfrak{R}_v + \mathfrak{R}_p \mathbb{I})$$

Energy inequality

$$\frac{d}{dt} E(t) \leq 0, \quad E(t) \leq E_0, \quad E_0 = \int_{\Omega} \left[\frac{1}{2} \frac{|\mathbf{m}_0|^2}{\varrho_0} + P(\varrho_0) \right] dx$$

$$\boxed{E} \equiv \left(\int_{\Omega} \left[\frac{1}{2} \frac{|\mathbf{m}|^2}{\varrho} + P(\varrho) \right] dx + \int_{\bar{\Omega}} d \frac{1}{2} \operatorname{trace}[\mathfrak{R}_v] + \int_{\bar{\Omega}} d \frac{1}{\gamma - 1} \mathfrak{R}_p \right)$$

Turbulent defect measures

$$\mathfrak{R}_v \in L^\infty(0, T; \mathcal{M}^+(\bar{\Omega}; R_{\operatorname{sym}}^{d \times d})), \quad \mathfrak{R}_p \in L^\infty(0, T; \mathcal{M}^+(\bar{\Omega}))$$



Dominic Breit
(Edinburgh)



Martina Hofmanová
(Bielefeld)

Basic properties of dissipative solutions

Well posedness, weak strong uniqueness

- **Existence.** Dissipative solutions exist globally in time for any finite energy initial data
- **Limits of consistent approximations** Limits of consistent approximations are dissipative solutions, in particular limits of consistent numerical schemes.
- **Compatibility.** Any C^1 dissipative solution $[\varrho, \mathbf{m}]$, $\varrho > 0$ is a classical solution of the Euler system
- **Weak–strong uniqueness.** If $[\tilde{\varrho}, \tilde{\mathbf{m}}]$ is a classical solution and $[\varrho, \mathbf{m}]$ a dissipative solution starting from the same initial data, then $\mathfrak{R}_v = \mathfrak{R}_p = 0$ and $\varrho = \tilde{\varrho}$, $\mathbf{m} = \tilde{\mathbf{m}}$.

Semiflow selection

Set of data

$$\mathcal{D} = \left\{ \varrho, \mathbf{m}, E \mid \int_{\Omega} \frac{1}{2} \frac{|\mathbf{m}|^2}{\varrho} + P(\varrho) \, dx \leq E \right\}$$

Set of trajectories

$$\mathcal{T} = \left\{ \varrho(t, \cdot), \mathbf{m}(t, \cdot), E(t-, \cdot) \mid t \in (0, \infty) \right\}$$

Solution set

$$\mathcal{U}[\varrho_0, \mathbf{m}_0, E_0] = \left\{ [\varrho, \mathbf{m}, E] \mid [\varrho, \mathbf{m}, E] \text{ dissipative solution} \right.$$

$$\left. \varrho(0, \cdot) = \varrho_0, \mathbf{m}(0, \cdot) = \mathbf{m}_0, E(0+) \leq E_0 \right\}$$

Semiflow selection – semigroup

$$U[\varrho_0, \mathbf{m}_0, E_0] \in \mathcal{U}[\varrho_0, \mathbf{m}_0, E_0], [\varrho_0, \mathbf{m}_0, E_0] \in \mathcal{D}$$

$$U(t_1 + t_2)[\varrho_0, \mathbf{m}_0, E_0] = U(t_1) \circ \left[U(t_2)[\varrho_0, \mathbf{m}_0, E_0] \right], t_1, t_2 > 0$$



Andrej Markov
(1856–1933)



N. V. Krylov

Strong instead of weak (numerics)

Komlos theorem (a variant of Strong Law of Large Numbers)

$$\{U_n\}_{n=1}^{\infty} \text{ bounded in } L^1(Q)$$

\Rightarrow

$$\frac{1}{N} \sum_{k=1}^N U_{n_k} \rightarrow \bar{U} \text{ a.a. in } Q \text{ as } N \rightarrow \infty$$



Janos Komlos
(Ruthers
Univ.)

Convergence of numerical solutions - EF, M.Lukáčová, H.Mizerová 2018

$$\frac{1}{N} \sum_{k=1}^N \varrho_{n_k} \rightarrow \varrho \text{ in } L^1((0, T) \times \Omega) \text{ as } N \rightarrow \infty$$

$$\frac{1}{N} \sum_{k=1}^N \mathbf{m}_{n_k} \rightarrow \mathbf{m} \text{ in } L^1((0, T) \times \Omega) \text{ as } N \rightarrow \infty$$

$$\frac{1}{N} \sum_{k=1}^N \left[\frac{1}{2} \frac{|\mathbf{m}_{n,k}|^2}{\varrho_{n,k}} + P(\varrho_{n,k}) \right] \rightarrow \bar{\mathcal{E}} \in L^1((0, T) \times \Omega) \text{ a.a. in } (0, T) \times \Omega$$

Computing defect – Young measure

Generating Young measure

$\mathbf{U}_n = [\varrho_n, \mathbf{m}_n] \in R^{d+1}$ phase space

$\{\mathbf{U}_n\}_{n=1}^\infty$ bounded in $L^1(Q; R^d) \approx \nu_{t,x}^n = \delta_{\mathbf{U}_n(t,x)}$

\Rightarrow

$$\frac{1}{N} \sum_{k=1}^N \nu_{t,x}^{n_k} \rightarrow \nu_{t,x} \text{ narrowly } \boxed{\text{a.a.}} \text{ in } Q \text{ as } N \rightarrow \infty$$

Young measure

$(t, x) \in Q \mapsto \nu_{t,x} \in \mathcal{P}[R^{d+1}]$ weakly-(*) measurable mapping



Erich J. Balder
(Utrecht)

$$\mathfrak{R}_p \approx \langle \nu; p(\varrho) \rangle - p(\varrho)$$

$$\mathfrak{R}_v \approx \left\langle \nu; \frac{\mathbf{m} \otimes \mathbf{m}}{\varrho} \right\rangle - \frac{\mathbf{m} \otimes \mathbf{m}}{\varrho}$$

Computing defect numerically -EF, M.Lukáčová, B.She

Monge–Kantorowich (Wasserstein) distance

$$\left\| \text{dist} \left(\frac{1}{N} \sum_{k=1}^N \nu_{t,x}^{n_k}; \nu_{t,x} \right) \right\|_{L^q(Q)} \rightarrow 0$$

for some $q > 1$

Convergence in the first variation

$$\frac{1}{N} \sum_{k=1}^N \left\langle \nu_{t,x}^{n_k}; \left| \tilde{\mathbf{u}} - \frac{1}{N} \sum_{k=1}^N \mathbf{u}_n \right| \right\rangle \rightarrow \left\langle \nu_{t,x}; \left| \tilde{\mathbf{u}} - \mathbf{u} \right| \right\rangle$$

in $L^1(Q)$



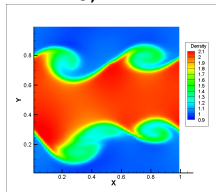
**Mária
Lukáčová
(Mainz)**



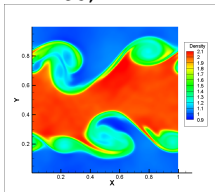
**Bangwei She
(CAS Praha)**

Experiment I, density for Kelvin–Helmholtz problem (M. Lukáčová, Yue Wang)

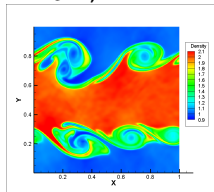
density ϱ
 $n = 128, T = 2$



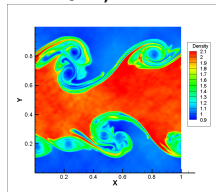
density ϱ
 $n = 256, T = 2$



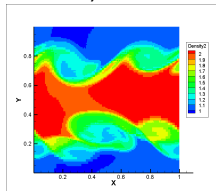
density ϱ
 $n = 512, T = 2$



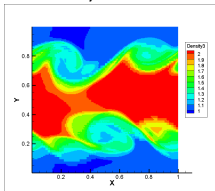
density ϱ
 $n = 1024, T = 2$



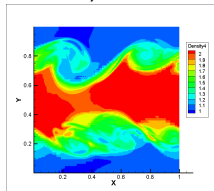
Cèsaro averages
density ϱ
 $n = 128, T = 2$



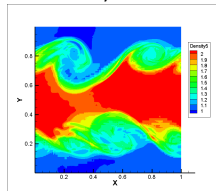
Cèsaro averages
density ϱ
 $n = 256, T = 2$



Cèsaro averages
density ϱ
 $n = 512, T = 2$

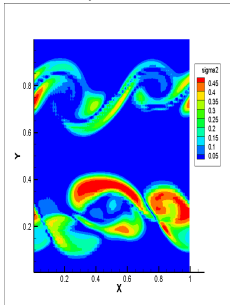


Cèsaro averages
density ϱ
 $n = 1024, T = 2$

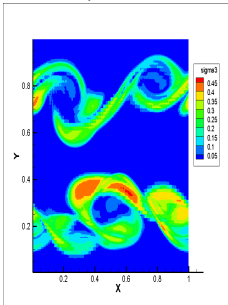


Experiment II, density variations for Kelvin–Helmholtz problem (M. Lukáčová, Yue Wang)

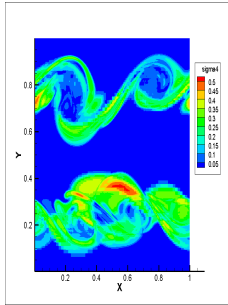
density variation
 $n = 128, T = 2$



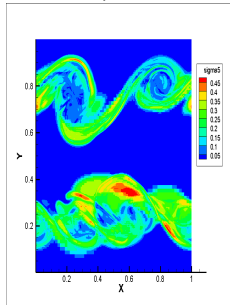
density variation
 $n = 256, T = 2$



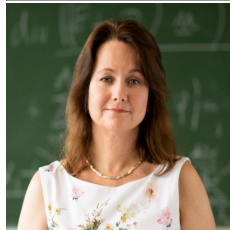
density variation
 $n = 512, T = 2$



density variation
 $n = 1024, T = 2$



Yue Wang, Mainz



Mária Lukáčová,
Mainz