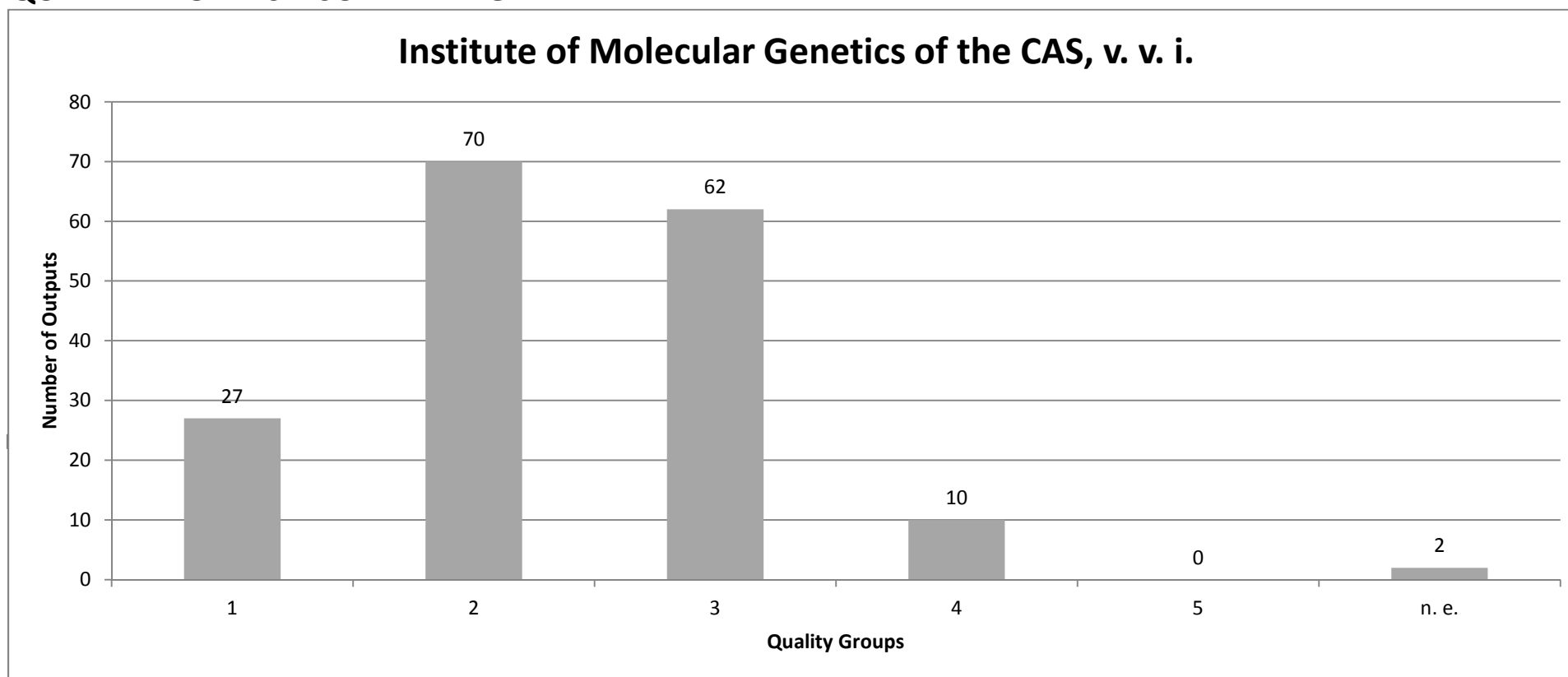


QUALITY PROFILES - SUMMARY GRAPH



Quality Groups:

(1): Quality that is **world-leading** in terms of originality, significance and rigour.

(2): Quality that is **internationally excellent** in terms of originality, significance and rigour but which falls short of the highest standards of excellence.

(3): Quality that is **recognized internationally** in terms of originality, significance and rigour.

(4): Quality that is **recognized nationally** in terms of originality, significance and rigour.

(5): Quality that falls **below the standard** of nationally recognized work. Or work which does not meet the published definition of research for the purposes of this assessment.

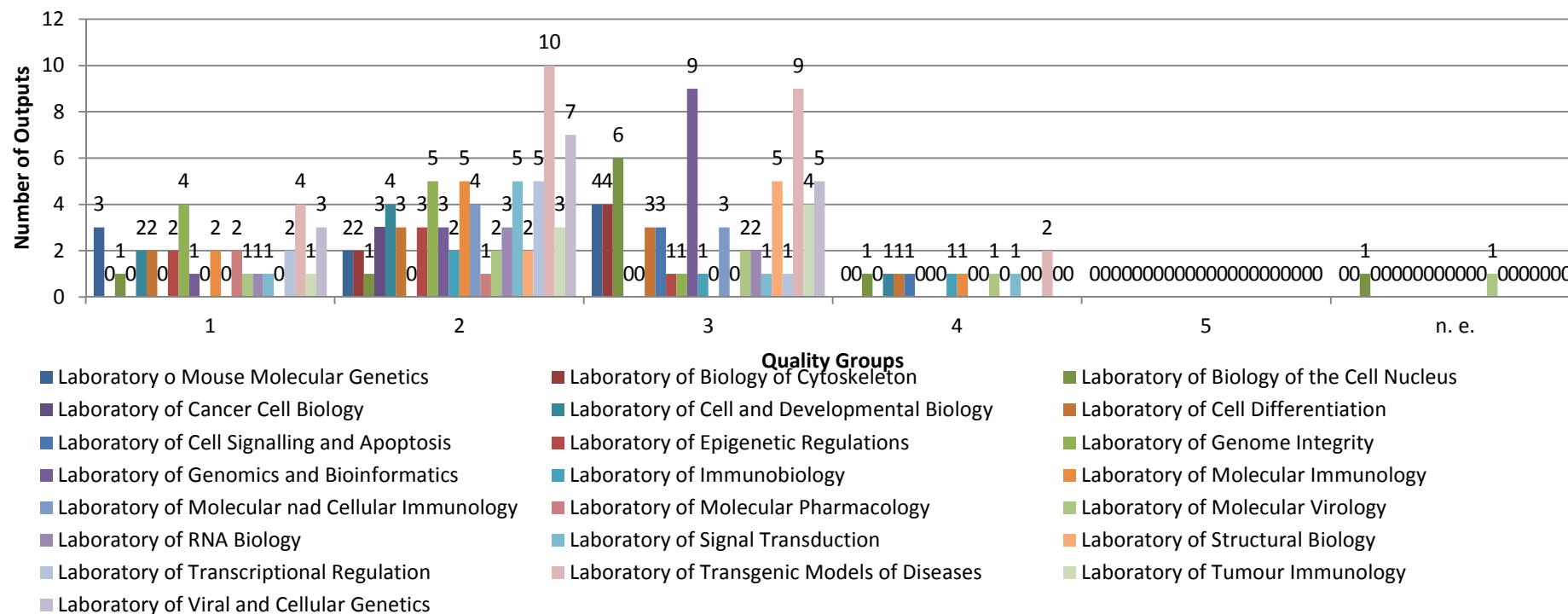
n. e. - outputs submitted by the team but not evaluated in the Phase I.

This plot is presented as an aggregate of data from the Phase I of evaluation for convenience of evaluators in the Phase II.

Evaluation of the Research and Professional Activities of the Institutes of the Czech Academy of Sciences for 2010–2014

QUALITY PROFILES

Institute of Molecular Genetics of the CAS, v. v. i.



Quality Groups:

(1): Quality that is **world-leading** in terms of originality, significance and rigour.

(2): Quality that is **internationally excellent** in terms of originality, significance and rigour but which falls short of the highest standards of excellence.

(3): Quality that is **recognized internationally** in terms of originality, significance and rigour.

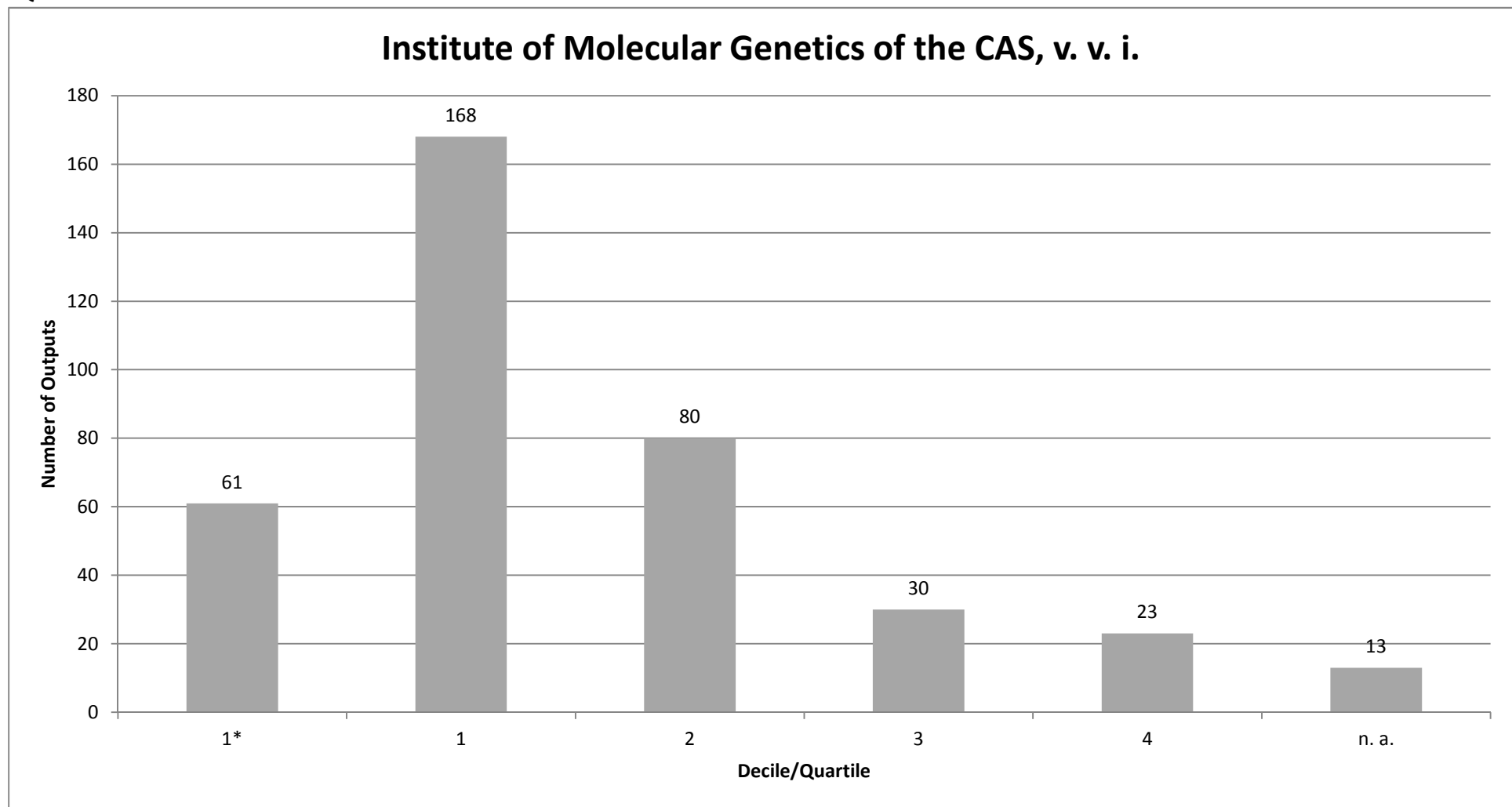
(4): Quality that is **recognized nationally** in terms of originality, significance and rigour.

(5): Quality that falls **below the standard** of nationally recognized work. Or work which does not meet the published definition of research for the purposes of this assessment.

n. e. - outputs submitted by the team but not evaluated in the Phase I.

This plot is presented as an aggregate of data from the Phase I of evaluation for convenience of evaluators in the Phase II; the columns represent outputs (not productivity) and cannot be directly compared each other.

QUALITY OF OUTPUTS BY JOURNALS - SUMMARY GRAPH

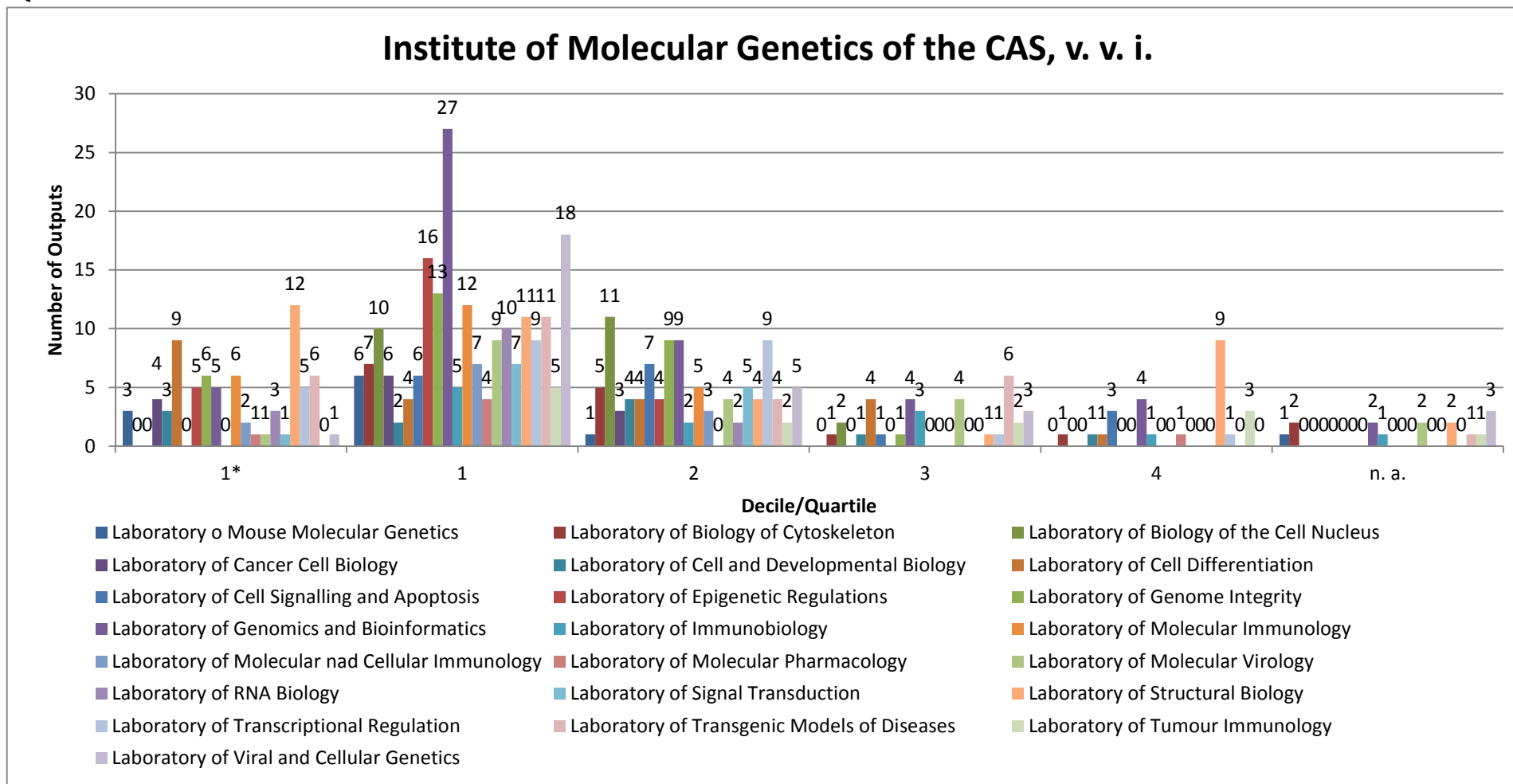


Number of outputs in top decile (1*) and quartiles (1-4) by AIS of journals; n. a. - outputs in journals without AIS; if the output is assigned to more than one field, the mean value of quartile is taken (values from 0,1 to 0,5 rounded down).

This plot is presented as an aggregate of bibliometric data for convenience of evaluators.

Evaluation of the Research and Professional Activities of the Institutes of the Czech Academy of Sciences for 2010–2014

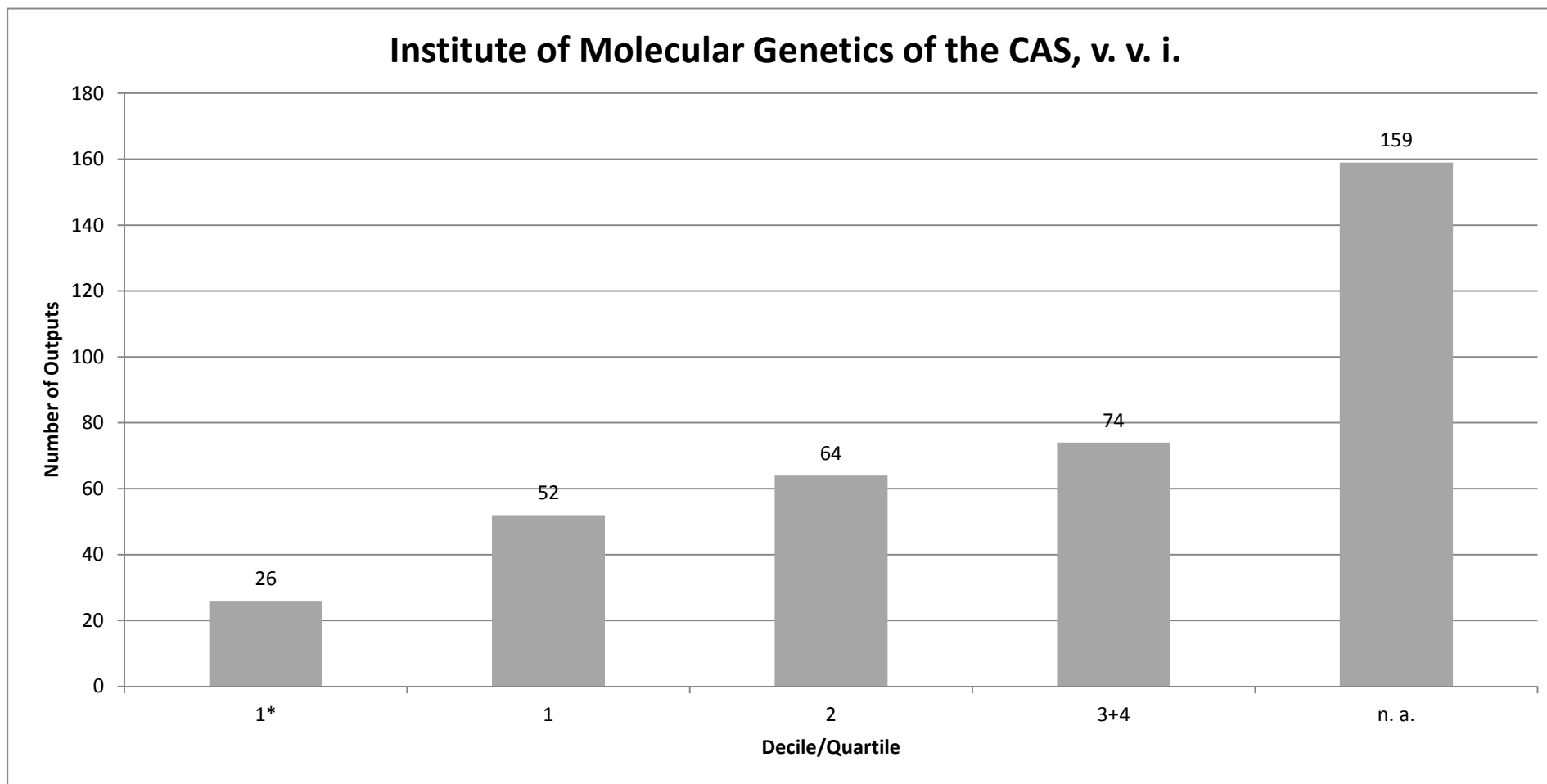
QUALITY OF OUTPUTS BY JOURNALS



Number of outputs in top decile (1*) and quartiles (1-4) by AIS of journals; n. a. - outputs in journals without AIS; if the output is assigned to more than one field, the mean value of quartile is taken (values from 0,1 to 0,5 rounded down).

This plot is presented as an aggregate of bibliometric data for convenience of evaluators; the columns represent outputs (not productivity) and cannot be directly compared each other.

Evaluation of the Research and Professional Activities of the Institutes of the Czech Academy of Sciences for 2010–2014
QUALITY OF OUTPUTS BY INTENSITY OF CITATIONS - SUMMARY GRAPH

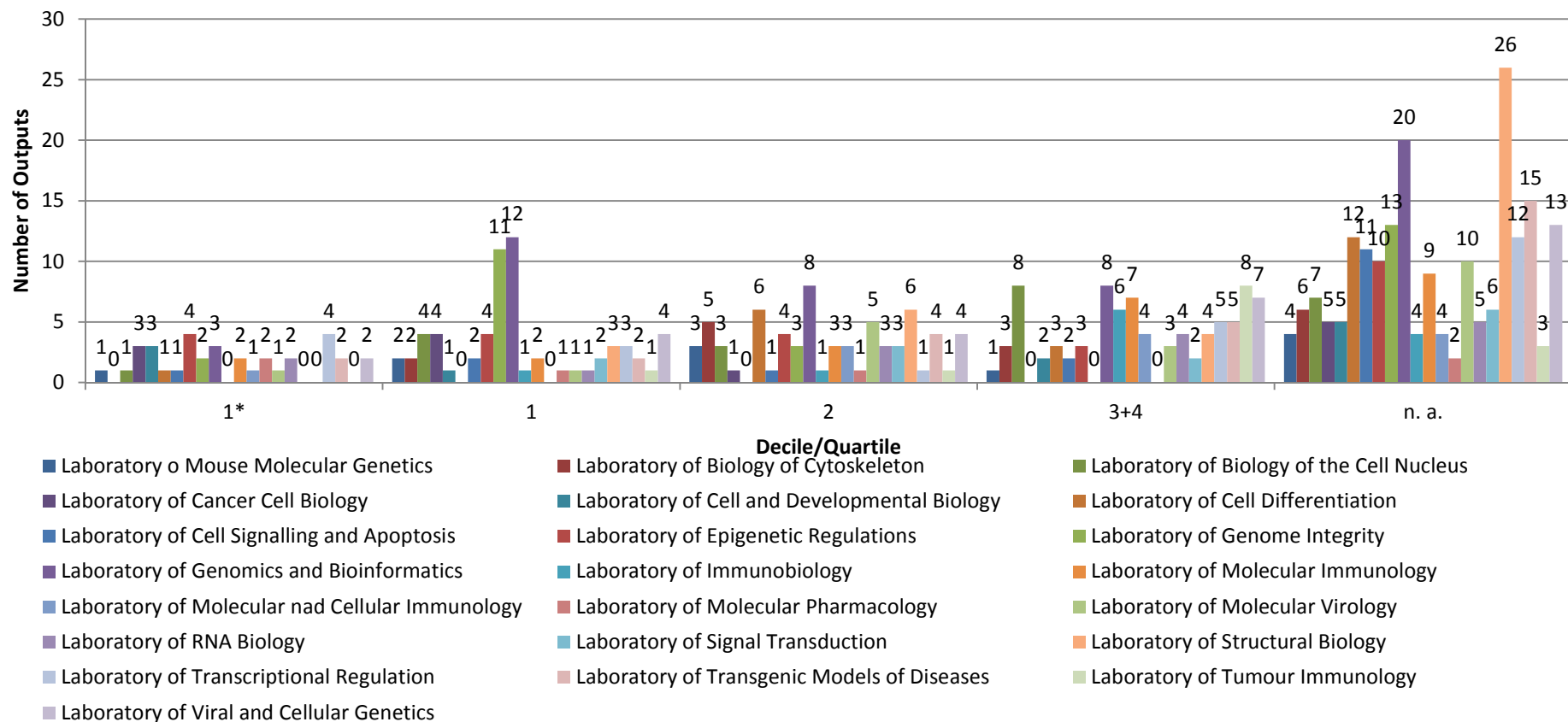


Number of outputs in the top decile (1*) and in quartiles (1, 2, 3+4) of the list of outputs ordered by the number of citations; n. a. - the number of outputs in the field is low and/or the number of citations is not sufficient for relevant judgement; if the output is assigned to more than one field, the mean value of quartile is taken (values from 0,1 to 0,5 rounded down).

This plot is presented as an aggregate of bibliometric data for convenience of evaluators.

Evaluation of the Research and Professional Activities of the Institutes of the Czech Academy of Sciences for 2010–2014
QUALITY OF OUTPUTS BY INTENSITY OF CITATIONS

Institute of Molecular Genetics of the CAS, v. v. i.



Number of outputs in the top decile (1*) and in quartiles (1, 2, 3+4) of the list of outputs ordered by the number of citations; n. a. - the number of outputs in the field is low and/or the number of citations is not sufficient for relevant judgement; if the output is assigned to more than one field, the mean value of quartile is taken (values from 0,1 to 0,5 rounded down).

This plot is presented as an aggregate of bibliometric data for convenience of evaluators; the columns represent outputs (not productivity) and cannot be directly compared each other.

**Evaluation of the Research and Professional Activities of the Institutes of the Czech Academy of Sciences for 2010–2014
RESULTS OF THE PHASE I. AND BIBLIOMETRIC PARAMETERS**

Institute: Institute of Molecular Genetics of the CAS, v. v. i.

Team: Laboratory of Tumour Immunology

Head: RNDr. Milan Reiniš, CSc.

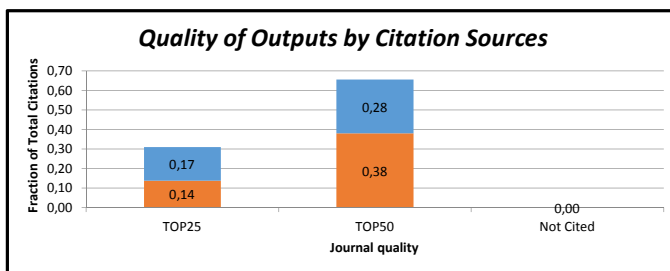
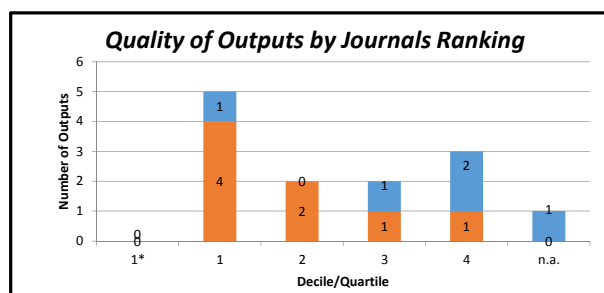
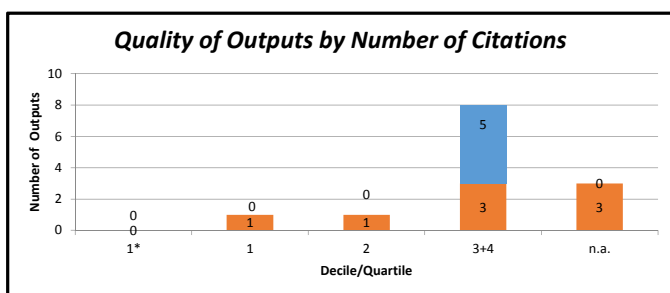
Total number of outputs : 17 **Evaluated outputs :** 8 (0) **Outputs for bibliometry :** 13 **Large collaborations outputs:** 0

Quality Groups of Outputs (Results of the Phase I.)

| | | | | | |
|---------|---|---|---|---|---|
| Quality | 1 | 2 | 3 | 4 | 5 |
| Outputs | 1 | 3 | 4 | 0 | 0 |

Quality Groups:

- (1): Quality that is **world-leading** in terms of originality, significance and rigour.
- (2): Quality that is **internationally excellent** in terms of originality, significance and rigour but which falls short of the highest standards of excellence.
- (3): Quality that is **recognized internationally** in terms of originality, significance and rigour.
- (4): Quality that is **recognized nationally** in terms of originality, significance and rigour.
- (5): Quality that falls **below the standard** of nationally recognized work. Or work which does not meet the published definition of research for the purposes of this assessment.



| Field Structure of Outputs | Outputs |
|----------------------------|---------|
| ONCOLOGY | 6 |
| IMMUNOLOGY | 3 |
| CHEMISTRY, MEDICINAL | 1 |
| ENDOCRINOLOGY & METABOLISM | 1 |
| CELL BIOLOGY | 1 |
| HEMATOLOGY | 1 |

Total number of outputs: selected types of outputs published in 2010-2014 and registered in the institutional research information system: journal article, monograph, monograph chapter, proceedings paper, patent, utility model, industrial design, prototype, functional specimen, norms and directives, specialized map, realized certified methodology, software, pilot plant, verified technology, plant breed/variety.

Evaluated outputs: outputs submitted by the team and evaluated in the Phase I (value in the brackets shows number of outputs submitted by the team but not evaluated in the Phase I).

Outputs for bibliometry: publications in 2010-2014 with less than 30 authors registered in the Web of Science; document type: article, review or proceedings paper.

Large collaborations outputs: publications in 2010-2014 with more than 30 authors registered in the Web of Science; document type: article, review or proceedings paper.

Quality Profile: number of evaluated outputs vs quality groups (5 groups); 'world-leading' quality denotes an absolute standard of quality in each field and subfield; 'world leading', 'internationally' and 'nationally' in this context refer to quality standards; they do not refer to the nature or geographical scope of particular subjects, nor to the focus of research nor its place of dissemination; for example, research which is focused on the subject specific to the Czech Republic might be of 'world leading' standard, on the contrary, work with an international focus might not be of 'world leading, internationally excellent or internationally recognized' standard.

Quality of Outputs by Journals Ranking: number of outputs in top decile (1*) and quartiles (1-4) by AIS of journals; n. a. - outputs in journals without AIS; if the output is assigned to more than one field, the mean value of quartile is taken (values from 0,1 to 0,5 rounded down); orange: outputs submitted by the team to the Evaluation, blue: other outputs by the team.

Quality of Outputs by Number of Citations: number of outputs in the top decile (1*) and in quartiles (1, 2, 3+4) of the list of outputs ordered by the number of citations; n. a. - the number of outputs in the field is low and/or the number of citations is not sufficient for relevant judgement; if the output is assigned to more than one field, the mean value of quartile is taken (values from 0,1 to 0,5 rounded down); orange: outputs submitted by the team to the Evaluation, blue: other outputs by the team.

Quality of Outputs by Citation Sources: fraction of citations of all outputs in the top quartile (TOP25) or the top half (TOP50) of list of journals ordered by AIS; fraction of "not cited" outputs is added; orange: outputs submitted by the team to the Evaluation, blue: other outputs by the team.

Field Structure of Outputs: number of outputs of the team in different fields; if the output is assigned to more than one field, the field where the publication performs best (assessed by Quality of Outputs by Journals Ranking) is taken; the table shows up to 30 fields.

Evaluation of the Research and Professional Activities of the Institutes of the Czech Academy of Sciences for 2010–2014
RESULTS OF THE PHASE I. AND BIBLIOMETRIC PARAMETERS

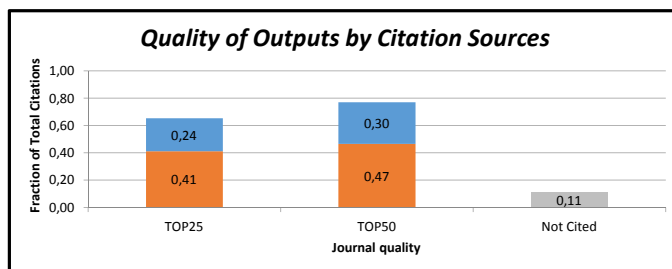
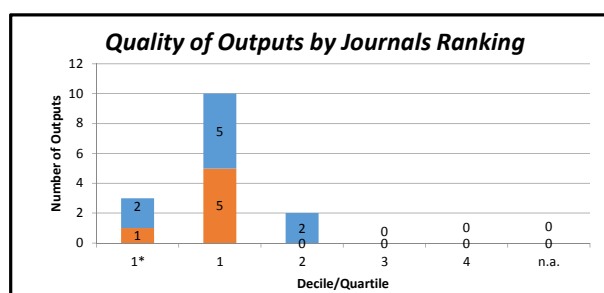
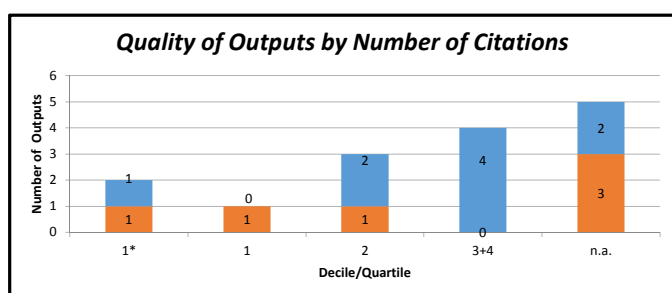
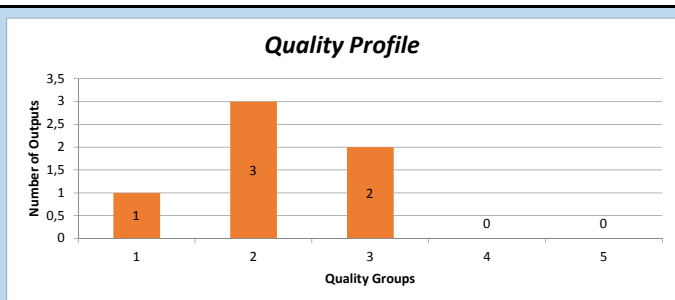
Institute: Institute of Molecular Genetics of the CAS, v. v. i.
Team: Laboratory of RNA Biology
Head: Doc. David Staněk, PhD.
Total number of outputs : 17 **Evaluated outputs :** 6 (0) **Outputs for bibliometry :** 15 **Large collaborations outputs:** 0

Quality Groups of Outputs (Results of the Phase I.)

| | | | | | |
|---------|---|---|---|---|---|
| Quality | 1 | 2 | 3 | 4 | 5 |
| Outputs | 1 | 3 | 2 | 0 | 0 |

Quality Groups:

- (1): Quality that is **world-leading** in terms of originality, significance and rigour.
- (2): Quality that is **internationally excellent** in terms of originality, significance and rigour but which falls short of the highest standards of excellence.
- (3): Quality that is **recognized internationally** in terms of originality, significance and rigour.
- (4): Quality that is **recognized nationally** in terms of originality, significance and rigour.
- (5): Quality that falls **below the standard** of nationally recognized work. Or work which does not meet the published definition of research for the purposes of this assessment.



| Field Structure of Outputs | Outputs |
|----------------------------------|---------|
| CELL BIOLOGY | 5 |
| MULTIDISCIPLINARY SCIENCES | 3 |
| GENETICS & HEREDITY | 1 |
| BIOLOGY | 1 |
| CHEMISTRY, MULTIDISCIPLINARY | 1 |
| MICROBIOLOGY | 1 |
| BIOCHEMISTRY & MOLECULAR BIOLOGY | 1 |
| ENGINEERING, BIOMEDICAL | 1 |
| GASTROENTEROLOGY & HEPATOLOGY | 1 |

Total number of outputs: selected types of outputs published in 2010-2014 and registered in the institutional research information system: journal article, monograph, monograph chapter, proceedings paper, patent, utility model, industrial design, prototype, functional specimen, norms and directives, specialized map, realized certified methodology, software, pilot plant, verified technology, plant breed/variety.

Evaluated outputs: outputs submitted by the team and evaluated in the Phase I (value in the brackets shows number of outputs submitted by the team but not evaluated in the Phase I).

Outputs for bibliometry: publications in 2010-2014 with less than 30 authors registered in the Web of Science; document type: article, review or proceedings paper.

Large collaborations outputs: publications in 2010-2014 with more than 30 authors registered in the Web of Science; document type: article, review or proceedings paper.

Quality Profile: number of evaluated outputs vs quality groups (5 groups); ‘world-leading’ quality denotes an absolute standard of quality in each field and subfield; ‘world leading’, ‘internationally’ and ‘nationally’ in this context refer to quality standards; they do not refer to the nature or geographical scope of particular subjects, nor to the focus of research nor its place of dissemination; for example, research which is focused on the subject specific to the Czech Republic might be of ‘world leading’ standard, on the contrary, work with an international focus might not be of ‘world leading, internationally excellent or internationally recognized’ standard.

Quality of Outputs by Journals Ranking: number of outputs in top decile (1*) and quartiles (1-4) by AIS of journals; n. a. - outputs in journals without AIS; if the output is assigned to more than one field, the mean value of quartile is taken (values from 0,1 to 0,5 rounded down); orange: outputs submitted by the team to the Evaluation, blue: other outputs by the team.

Quality of Outputs by Number of Citations: number of outputs in the top decile (1*) and in quartiles (1, 2, 3+4) of the list of outputs ordered by the number of citations; n. a. - the number of outputs in the field is low and/or the number of citations is not sufficient for relevant judgement; if the output is assigned to more than one field, the mean value of quartile is taken (values from 0,1 to 0,5 rounded down); orange: outputs submitted by the team to the Evaluation, blue: other outputs by the team.

Quality of Outputs by Citation Sources: fraction of citations of all outputs in the top quartile (TOP25) or the top half (TOP50) of list of journals ordered by AIS; fraction of “not cited” outputs is added; orange: outputs submitted by the team to the Evaluation, blue: other outputs by the team.

Field Structure of Outputs: number of outputs of the team in different fields; if the output is assigned to more than one field, the field where the publication performs best (assessed by Quality of Outputs by Journals Ranking) is taken; the table shows up to 30 fields.

Evaluation of the Research and Professional Activities of the Institutes of the Czech Academy of Sciences for 2010–2014
RESULTS OF THE PHASE I. AND BIBLIOMETRIC PARAMETERS

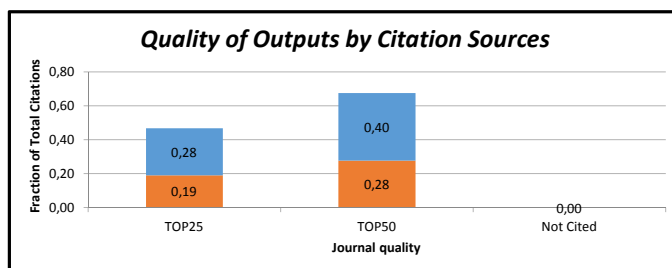
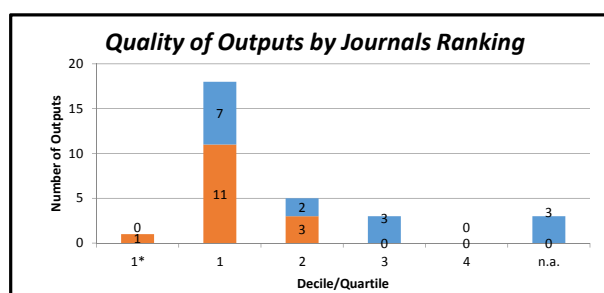
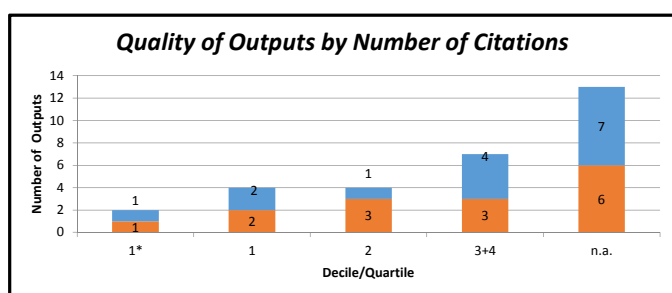
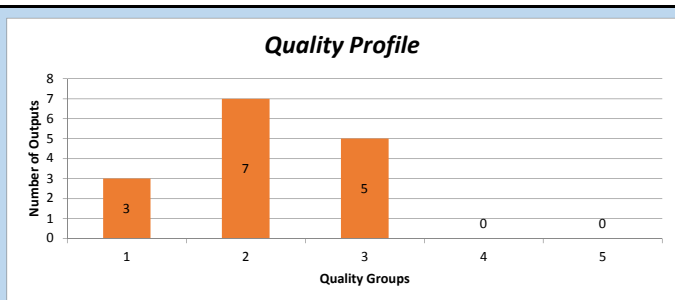
Institute: Institute of Molecular Genetics of the CAS, v. v. i.
Team: Laboratory of Viral and Cellular Genetics
Head: RNDr. Jiří Hejnar, CSc.
Total number of outputs : 43 **Evaluated outputs :** 15 (0) **Outputs for bibliometry :** 30 **Large collaborations outputs:** 0

Quality Groups of Outputs (Results of the Phase I.)

| | | | | | |
|---------|---|---|---|---|---|
| Quality | 1 | 2 | 3 | 4 | 5 |
| Outputs | 3 | 7 | 5 | 0 | 0 |

Quality Groups:

- (1): Quality that is **world-leading** in terms of originality, significance and rigour.
- (2): Quality that is **internationally excellent** in terms of originality, significance and rigour but which falls short of the highest standards of excellence.
- (3): Quality that is **recognized internationally** in terms of originality, significance and rigour.
- (4): Quality that is **recognized nationally** in terms of originality, significance and rigour.
- (5): Quality that falls **below the standard** of nationally recognized work. Or work which does not meet the published definition of research for the purposes of this assessment.



| Field Structure of Outputs | Outputs |
|-------------------------------------|---------|
| VIROLOGY | 6 |
| CELL BIOLOGY | 5 |
| BIOCHEMISTRY & MOLECULAR BIOLOGY | 4 |
| IMMUNOLOGY | 3 |
| ONCOLOGY | 3 |
| TROPICAL MEDICINE | 2 |
| AGRICULTURE, DAIRY & ANIMAL SCIENCE | 1 |
| BIOLOGY | 1 |
| PHARMACOLOGY & PHARMACY | 1 |
| BIOCHEMICAL RESEARCH METHODS | 1 |
| VETERINARY SCIENCES | 1 |
| DEVELOPMENTAL BIOLOGY | 1 |
| HEMATOLOGY | 1 |

Total number of outputs: selected types of outputs published in 2010-2014 and registered in the institutional research information system: journal article, monograph, monograph chapter, proceedings paper, patent, utility model, industrial design, prototype, functional specimen, norms and directives, specialized map, realized certified methodology, software, pilot plant, verified technology, plant breed/variety.

Evaluated outputs: outputs submitted by the team and evaluated in the Phase I (value in the brackets shows number of outputs submitted by the team but not evaluated in the Phase I).

Outputs for bibliometry: publications in 2010-2014 with less than 30 authors registered in the Web of Science; document type: article, review or proceedings paper.

Large collaborations outputs: publications in 2010-2014 with more than 30 authors registered in the Web of Science; document type: article, review or proceedings paper.

Quality Profile: number of evaluated outputs vs quality groups (5 groups); 'world-leading' quality denotes an absolute standard of quality in each field and subfield; 'world leading', 'internationally' and 'nationally' in this context refer to quality standards; they do not refer to the nature or geographical scope of particular subjects, nor to the focus of research nor its place of dissemination; for example, research which is focused on the subject specific to the Czech Republic might be of 'world leading' standard, on the contrary, work with an international focus might not be of 'world leading, internationally excellent or internationally recognized' standard.

Quality of Outputs by Journals Ranking: number of outputs in top decile (1*) and quartiles (1-4) by AIS of journals; n. a. - outputs in journals without AIS; if the output is assigned to more than one field, the mean value of quartile is taken (values from 0,1 to 0,5 rounded down); orange: outputs submitted by the team to the Evaluation, blue: other outputs by the team.

Quality of Outputs by Number of Citations: number of outputs in the top decile (1*) and in quartiles (1, 2, 3+4) of the list of outputs ordered by the number of citations; n. a. - the number of outputs in the field is low and/or the number of citations is not sufficient for relevant judgement; if the output is assigned to more than one field, the mean value of quartile is taken (values from 0,1 to 0,5 rounded down); orange: outputs submitted by the team to the Evaluation, blue: other outputs by the team.

Quality of Outputs by Citation Sources: fraction of citations of all outputs in the top quartile (TOP25) or the top half (TOP50) of list of journals ordered by AIS; fraction of "not cited" outputs is added; orange: outputs submitted by the team to the Evaluation, blue: other outputs by the team.

Field Structure of Outputs: number of outputs of the team in different fields; if the output is assigned to more than one field, the field where the publication performs best (assessed by Quality of Outputs by Journals Ranking) is taken; the table shows up to 30 fields.

Evaluation of the Research and Professional Activities of the Institutes of the Czech Academy of Sciences for 2010–2014
RESULTS OF THE PHASE I. AND BIBLIOMETRIC PARAMETERS

Institute: Institute of Molecular Genetics of the CAS, v. v. i.

Team: Laboratory of Immunobiology

Head: RNDr. Dominik Filipp, CSc.

Total number of outputs : 15 **Evaluated outputs :** 4 (0) **Outputs for bibliometry :** 12 **Large collaborations outputs:** 0

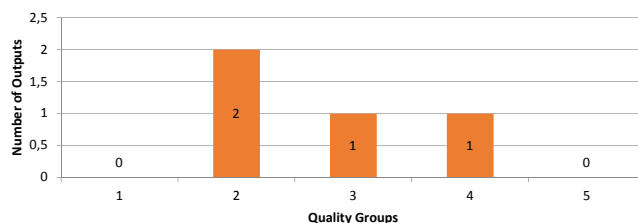
Quality Groups of Outputs (Results of the Phase I.)

| | | | | | |
|---------|---|---|---|---|---|
| Quality | 1 | 2 | 3 | 4 | 5 |
| Outputs | 0 | 2 | 1 | 1 | 0 |

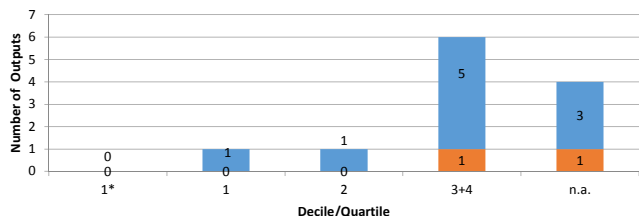
Quality Groups:

- (1): Quality that is **world-leading** in terms of originality, significance and rigour.
- (2): Quality that is **internationally excellent** in terms of originality, significance and rigour but which falls short of the highest standards of excellence.
- (3): Quality that is **recognized internationally** in terms of originality, significance and rigour.
- (4): Quality that is **recognized nationally** in terms of originality, significance and rigour.
- (5): Quality that falls **below the standard** of nationally recognized work. Or work which does not meet the published definition of research for the purposes of this assessment.

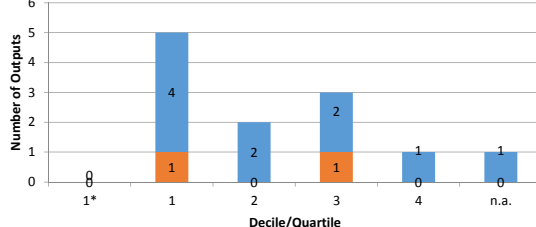
Quality Profile



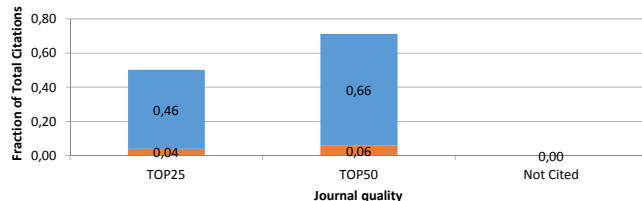
Quality of Outputs by Number of Citations



Quality of Outputs by Journals Ranking



Quality of Outputs by Citation Sources



Field Structure of Outputs

| Field Structure of Outputs | Outputs |
|----------------------------------|---------|
| IMMUNOLOGY | 4 |
| CHEMISTRY, ORGANIC | 2 |
| PATHOLOGY | 1 |
| BIOCHEMISTRY & MOLECULAR BIOLOGY | 1 |
| OPHTHALMOLOGY | 1 |
| ENDOCRINOLOGY & METABOLISM | 1 |
| BIOCHEMICAL RESEARCH METHODS | 1 |
| GENETICS & HEREDITY | 1 |

Total number of outputs: selected types of outputs published in 2010-2014 and registered in the institutional research information system: journal article, monograph, monograph chapter, proceedings paper, patent, utility model, industrial design, prototype, functional specimen, norms and directives, specialized map, realized certified methodology, software, pilot plant, verified technology, plant breed/variety.

Evaluated outputs: outputs submitted by the team and evaluated in the Phase I (value in the brackets shows number of outputs submitted by the team but not evaluated in the Phase I).

Outputs for bibliometry: publications in 2010-2014 with less than 30 authors registered in the Web of Science; document type: article, review or proceedings paper.

Large collaborations outputs: publications in 2010-2014 with more than 30 authors registered in the Web of Science; document type: article, review or proceedings paper.

Quality Profile: number of evaluated outputs vs quality groups (5 groups); 'world-leading' quality denotes an absolute standard of quality in each field and subfield; 'world leading', 'internationally' and 'nationally' in this context refer to quality standards; they do not refer to the nature or geographical scope of particular subjects, nor to the focus of research nor its place of dissemination; for example, research which is focused on the subject specific to the Czech Republic might be of 'world leading' standard, on the contrary, work with an international focus might not be of 'world leading, internationally excellent or internationally recognized' standard.

Quality of Outputs by Journals Ranking: number of outputs in top decile (1*) and quartiles (1-4) by AIS of journals; n. a. - outputs in journals without AIS; if the output is assigned to more than one field, the mean value of quartile is taken (values from 0,1 to 0,5 rounded down); orange: outputs submitted by the team to the Evaluation, blue: other outputs by the team.

Quality of Outputs by Number of Citations: number of outputs in the top decile (1*) and in quartiles (1, 2, 3+4) of the list of outputs ordered by the number of citations; n. a. - the number of outputs in the field is low and/or the number of citations is not sufficient for relevant judgement; if the output is assigned to more than one field, the mean value of quartile is taken (values from 0,1 to 0,5 rounded down); orange: outputs submitted by the team to the Evaluation, blue: other outputs by the team.

Quality of Outputs by Citation Sources: fraction of citations of all outputs in the top quartile (TOP25) or the top half (TOP50) of list of journals ordered by AIS; fraction of "not cited" outputs is added; orange: outputs submitted by the team to the Evaluation, blue: other outputs by the team.

Field Structure of Outputs: number of outputs of the team in different fields; if the output is assigned to more than one field, the field where the publication performs best (assessed by Quality of Outputs by Journals Ranking) is taken; the table shows up to 30 fields.

Evaluation of the Research and Professional Activities of the Institutes of the Czech Academy of Sciences for 2010–2014
RESULTS OF THE PHASE I. AND BIBLIOMETRIC PARAMETERS

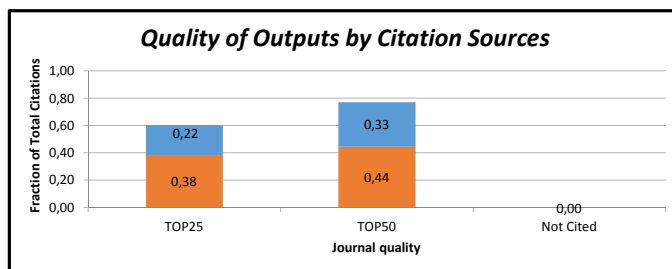
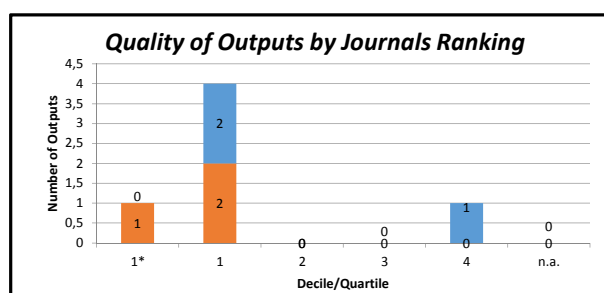
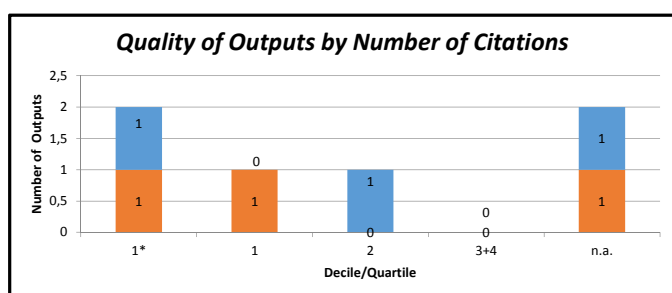
Institute: Institute of Molecular Genetics of the CAS, v. v. i.
Team: Laboratory of Molecular Pharmacology
Head: Doc. MUDr. Jaroslav Blahoš, PhD.
Total number of outputs : 6 **Evaluated outputs :** 3 (0) **Outputs for bibliometry :** 6 **Large collaborations outputs:** 0

Quality Groups of Outputs (Results of the Phase I.)

| | | | | | |
|---------|---|---|---|---|---|
| Quality | 1 | 2 | 3 | 4 | 5 |
| Outputs | 2 | 1 | 0 | 0 | 0 |

Quality Groups:

- (1): Quality that is **world-leading** in terms of originality, significance and rigour.
- (2): Quality that is **internationally excellent** in terms of originality, significance and rigour but which falls short of the highest standards of excellence.
- (3): Quality that is **recognized internationally** in terms of originality, significance and rigour.
- (4): Quality that is **recognized nationally** in terms of originality, significance and rigour.
- (5): Quality that falls **below the standard** of nationally recognized work. Or work which does not meet the published definition of research for the purposes of this assessment.



| Field Structure of Outputs | Outputs |
|----------------------------------|---------|
| PHARMACOLOGY & PHARMACY | 2 |
| BIOCHEMISTRY & MOLECULAR BIOLOGY | 2 |
| NEUROSCIENCES | 1 |
| HEMATOLOGY | 1 |

Total number of outputs: selected types of outputs published in 2010-2014 and registered in the institutional research information system: journal article, monograph, monograph chapter, proceedings paper, patent, utility model, industrial design, prototype, functional specimen, norms and directives, specialized map, realized certified methodology, software, pilot plant, verified technology, plant breed/variety.

Evaluated outputs: outputs submitted by the team and evaluated in the Phase I (value in the brackets shows number of outputs submitted by the team but not evaluated in the Phase I).

Outputs for bibliometry: publications in 2010-2014 with less than 30 authors registered in the Web of Science; document type: article, review or proceedings paper.

Large collaborations outputs: publications in 2010-2014 with more than 30 authors registered in the Web of Science; document type: article, review or proceedings paper.

Quality Profile: number of evaluated outputs vs quality groups (5 groups); 'world-leading' quality denotes an absolute standard of quality in each field and subfield; 'world leading', 'internationally' and 'nationally' in this context refer to quality standards; they do not refer to the nature or geographical scope of particular subjects, nor to the focus of research nor its place of dissemination; for example, research which is focused on the subject specific to the Czech Republic might be of 'world leading' standard, on the contrary, work with an international focus might not be of 'world leading, internationally excellent or internationally recognized' standard.

Quality of Outputs by Journals Ranking: number of outputs in top decile (1*) and quartiles (1-4) by AIS of journals; n. a. - outputs in journals without AIS; if the output is assigned to more than one field, the mean value of quartile is taken (values from 0,1 to 0,5 rounded down); orange: outputs submitted by the team to the Evaluation, blue: other outputs by the team.

Quality of Outputs by Number of Citations: number of outputs in the top decile (1*) and in quartiles (1, 2, 3+4) of the list of outputs ordered by the number of citations; n. a. - the number of outputs in the field is low and/or the number of citations is not sufficient for relevant judgement; if the output is assigned to more than one field, the mean value of quartile is taken (values from 0,1 to 0,5 rounded down); orange: outputs submitted by the team to the Evaluation, blue: other outputs by the team.

Quality of Outputs by Citation Sources: fraction of citations of all outputs in the top quartile (TOP25) or the top half (TOP50) of list of journals ordered by AIS; fraction of "not cited" outputs is added; orange: outputs submitted by the team to the Evaluation, blue: other outputs by the team.

Field Structure of Outputs: number of outputs of the team in different fields; if the output is assigned to more than one field, the field where the publication performs best (assessed by Quality of Outputs by Journals Ranking) is taken; the table shows up to 30 fields.

Evaluation of the Research and Professional Activities of the Institutes of the Czech Academy of Sciences for 2010–2014
RESULTS OF THE PHASE I. AND BIBLIOMETRIC PARAMETERS

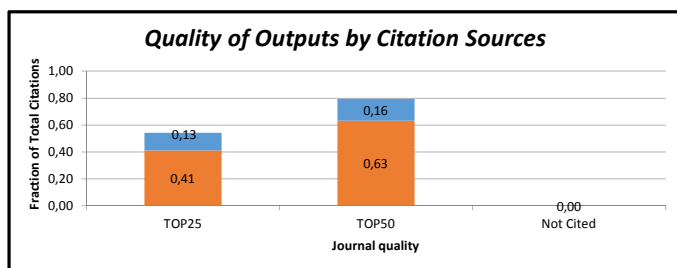
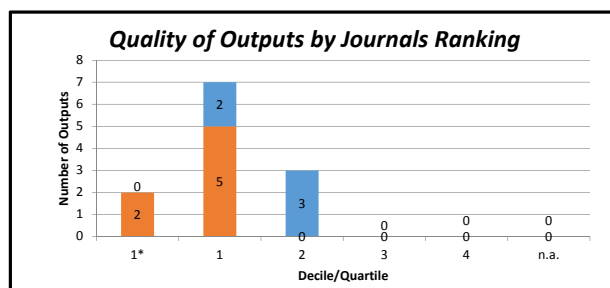
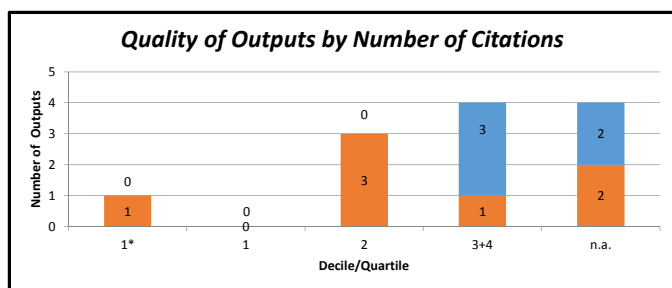
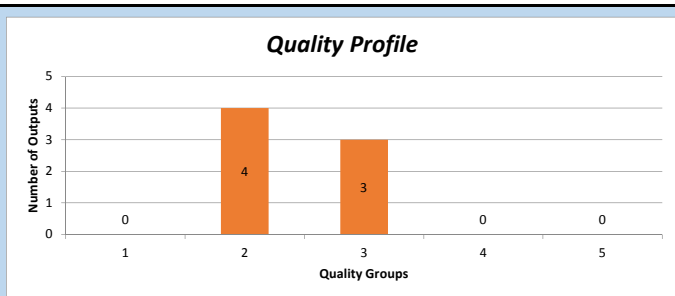
Institute: Institute of Molecular Genetics of the CAS, v. v. i.
Team: Laboratory of Molecular and Cellular Immunology
Head: Doc. Marie Lipoldová, CSc.
Total number of outputs : 12 **Evaluated outputs :** 7 (0) **Outputs for bibliometry :** 12 **Large collaborations outputs:** 0

Quality Groups of Outputs (Results of the Phase I.)

| | | | | | |
|---------|---|---|---|---|---|
| Quality | 1 | 2 | 3 | 4 | 5 |
| Outputs | 0 | 4 | 3 | 0 | 0 |

Quality Groups:

- (1): Quality that is **world-leading** in terms of originality, significance and rigour.
- (2): Quality that is **internationally excellent** in terms of originality, significance and rigour but which falls short of the highest standards of excellence.
- (3): Quality that is **recognized internationally** in terms of originality, significance and rigour.
- (4): Quality that is **recognized nationally** in terms of originality, significance and rigour.
- (5): Quality that falls **below the standard** of nationally recognized work. Or work which does not meet the published definition of research for the purposes of this assessment.



| Field Structure of Outputs | Outputs |
|------------------------------|---------|
| TROPICAL MEDICINE | 4 |
| IMMUNOLOGY | 3 |
| BIOCHEMICAL RESEARCH METHODS | 2 |
| PARASITOLOGY | 1 |
| BIOLOGY | 1 |
| CHEMISTRY, MEDICINAL | 1 |

Total number of outputs: selected types of outputs published in 2010-2014 and registered in the institutional research information system: journal article, monograph, monograph chapter, proceedings paper, patent, utility model, industrial design, prototype, functional specimen, norms and directives, specialized map, realized certified methodology, software, pilot plant, verified technology, plant breed/variety.

Evaluated outputs: outputs submitted by the team and evaluated in the Phase I (value in the brackets shows number of outputs submitted by the team but not evaluated in the Phase I).

Outputs for bibliometry: publications in 2010-2014 with less than 30 authors registered in the Web of Science; document type: article, review or proceedings paper.

Large collaborations outputs: publications in 2010-2014 with more than 30 authors registered in the Web of Science; document type: article, review or proceedings paper.

Quality Profile: number of evaluated outputs vs quality groups (5 groups); 'world-leading' quality denotes an absolute standard of quality in each field and subfield; 'world leading', 'internationally' and 'nationally' in this context refer to quality standards; they do not refer to the nature or geographical scope of particular subjects, nor to the focus of research nor its place of dissemination; for example, research which is focused on the subject specific to the Czech Republic might be of 'world leading' standard, on the contrary, work with an international focus might not be of 'world leading, internationally excellent or internationally recognized' standard.

Quality of Outputs by Journals Ranking: number of outputs in top decile (1*) and quartiles (1-4) by AIS of journals; n. a. - outputs in journals without AIS; if the output is assigned to more than one field, the mean value of quartile is taken (values from 0,1 to 0,5 rounded down); orange: outputs submitted by the team to the Evaluation, blue: other outputs by the team.

Quality of Outputs by Number of Citations: number of outputs in the top decile (1*) and in quartiles (1, 2, 3+4) of the list of outputs ordered by the number of citations; n. a. - the number of outputs in the field is low and/or the number of citations is not sufficient for relevant judgement; if the output is assigned to more than one field, the mean value of quartile is taken (values from 0,1 to 0,5 rounded down); orange: outputs submitted by the team to the Evaluation, blue: other outputs by the team.

Quality of Outputs by Citation Sources: fraction of citations of all outputs in the top quartile (TOP25) or the top half (TOP50) of list of journals ordered by AIS; fraction of "not cited" outputs is added; orange: outputs submitted by the team to the Evaluation, blue: other outputs by the team.

Field Structure of Outputs: number of outputs of the team in different fields; if the output is assigned to more than one field, the field where the publication performs best (assessed by Quality of Outputs by Journals Ranking) is taken; the table shows up to 30 fields.

**Evaluation of the Research and Professional Activities of the Institutes of the Czech Academy of Sciences for 2010–2014
RESULTS OF THE PHASE I. AND BIBLIOMETRIC PARAMETERS**

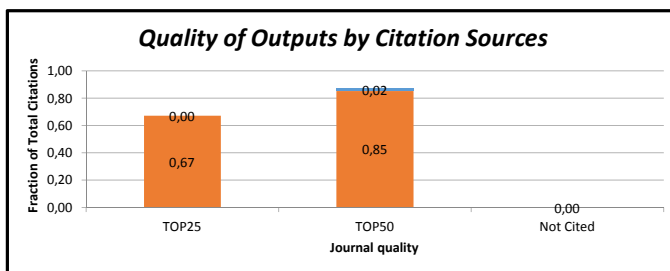
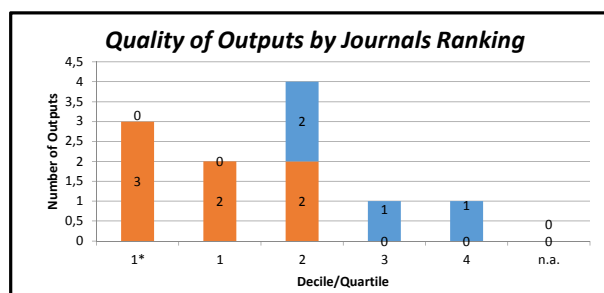
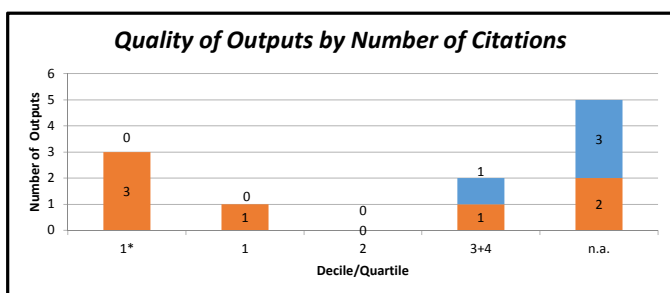
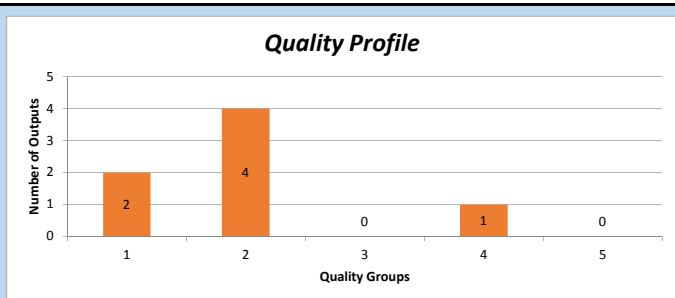
Institute: Institute of Molecular Genetics of the CAS, v. v. i.
Team: Laboratory of Cell and Developmental Biology
Head: RNDr. Vladimír Kořínek, SCC.
Total number of outputs : 12 **Evaluated outputs :** 7 (0) **Outputs for bibliometry :** 11 **Large collaborations outputs:** 0

Quality Groups of Outputs (Results of the Phase I.)

| | | | | | |
|---------|---|---|---|---|---|
| Quality | 1 | 2 | 3 | 4 | 5 |
| Outputs | 2 | 4 | 0 | 1 | 0 |

Quality Groups:

- (1): Quality that is **world-leading** in terms of originality, significance and rigour.
- (2): Quality that is **internationally excellent** in terms of originality, significance and rigour but which falls short of the highest standards of excellence.
- (3): Quality that is **recognized internationally** in terms of originality, significance and rigour.
- (4): Quality that is **recognized nationally** in terms of originality, significance and rigour.
- (5): Quality that falls **below the standard** of nationally recognized work. Or work which does not meet the published definition of research for the purposes of this assessment.



| Field Structure of Outputs | Outputs |
|-------------------------------------|---------|
| ONCOLOGY | 4 |
| CELL BIOLOGY | 2 |
| GASTROENTEROLOGY & HEPATOLOGY | 1 |
| BIPHYSICS | 1 |
| BIOLOGY | 1 |
| AGRICULTURE, DAIRY & ANIMAL SCIENCE | 1 |
| DEVELOPMENTAL BIOLOGY | 1 |

Total number of outputs: selected types of outputs published in 2010-2014 and registered in the institutional research information system: journal article, monograph, monograph chapter, proceedings paper, patent, utility model, industrial design, prototype, functional specimen, norms and directives, specialized map, realized certified methodology, software, pilot plant, verified technology, plant breed/variety.

Evaluated outputs: outputs submitted by the team and evaluated in the Phase I (value in the brackets shows number of outputs submitted by the team but not evaluated in the Phase I).

Outputs for bibliometry: publications in 2010-2014 with less than 30 authors registered in the Web of Science; document type: article, review or proceedings paper.

Large collaborations outputs: publications in 2010-2014 with more than 30 authors registered in the Web of Science; document type: article, review or proceedings paper.

Quality Profile: number of evaluated outputs vs quality groups (5 groups); ‘world-leading’ quality denotes an absolute standard of quality in each field and subfield; ‘world leading’, ‘internationally’ and ‘nationally’ in this context refer to quality standards; they do not refer to the nature or geographical scope of particular subjects, nor to the focus of research nor its place of dissemination; for example, research which is focused on the subject specific to the Czech Republic might be of ‘world leading’ standard, on the contrary, work with an international focus might not be of ‘world leading, internationally excellent or internationally recognized’ standard.

Quality of Outputs by Journals Ranking: number of outputs in top decile (1*) and quartiles (1-4) by AIS of journals; n. a. - outputs in journals without AIS; if the output is assigned to more than one field, the mean value of quartile is taken (values from 0,1 to 0,5 rounded down); orange: outputs submitted by the team to the Evaluation, blue: other outputs by the team.

Quality of Outputs by Number of Citations: number of outputs in the top decile (1*) and in quartiles (1, 2, 3+4) of the list of outputs ordered by the number of citations; n. a. - the number of outputs in the field is low and/or the number of citations is not sufficient for relevant judgement; if the output is assigned to more than one field, the mean value of quartile is taken (values from 0,1 to 0,5 rounded down); orange: outputs submitted by the team to the Evaluation, blue: other outputs by the team.

Quality of Outputs by Citation Sources: fraction of citations of all outputs in the top quartile (TOP25) or the top half (TOP50) of list of journals ordered by AIS; fraction of “not cited” outputs is added; orange: outputs submitted by the team to the Evaluation, blue: other outputs by the team.

Field Structure of Outputs: number of outputs of the team in different fields; if the output is assigned to more than one field, the field where the publication performs best (assessed by Quality of Outputs by Journals Ranking) is taken; the table shows up to 30 fields.

Evaluation of the Research and Professional Activities of the Institutes of the Czech Academy of Sciences for 2010–2014
RESULTS OF THE PHASE I. AND BIBLIOMETRIC PARAMETERS

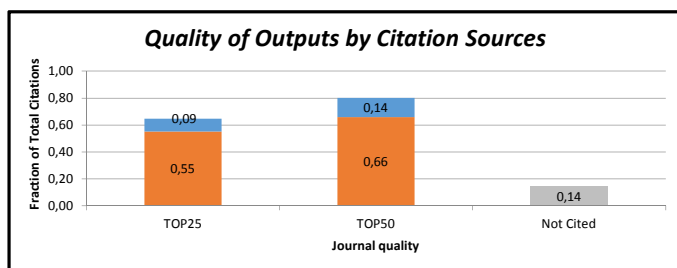
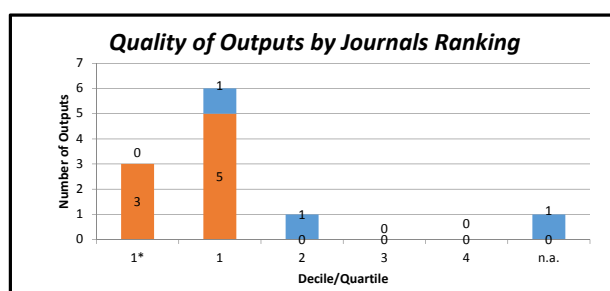
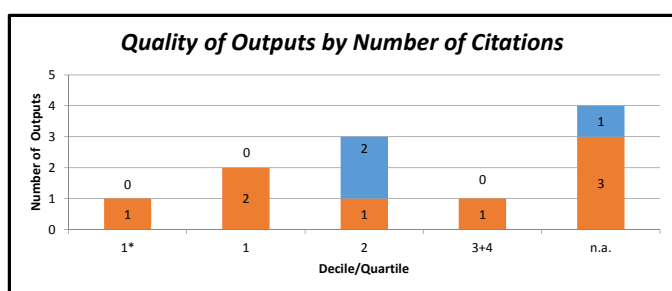
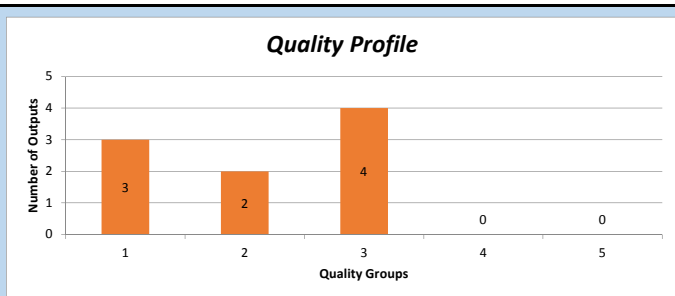
Institute: Institute of Molecular Genetics of the CAS, v. v. i.
Team: Laboratory of Mouse Molecular Genetics
Head: Prof. MUDr. Jiří Forejt, DrSc.
Total number of outputs : 14 **Evaluated outputs :** 9 (0) **Outputs for bibliometry :** 11 **Large collaborations outputs:** 0

Quality Groups of Outputs (Results of the Phase I.)

| | | | | | |
|---------|---|---|---|---|---|
| Quality | 1 | 2 | 3 | 4 | 5 |
| Outputs | 3 | 2 | 4 | 0 | 0 |

Quality Groups:

- (1): Quality that is **world-leading** in terms of originality, significance and rigour.
- (2): Quality that is **internationally excellent** in terms of originality, significance and rigour but which falls short of the highest standards of excellence.
- (3): Quality that is **recognized internationally** in terms of originality, significance and rigour.
- (4): Quality that is **recognized nationally** in terms of originality, significance and rigour.
- (5): Quality that falls **below the standard** of nationally recognized work. Or work which does not meet the published definition of research for the purposes of this assessment.



| Field Structure of Outputs | Outputs |
|----------------------------------|---------|
| GENETICS & HEREDITY | 3 |
| MULTIDISCIPLINARY SCIENCES | 2 |
| BIOCHEMISTRY & MOLECULAR BIOLOGY | 2 |
| REPRODUCTIVE BIOLOGY | 1 |
| ECOLOGY | 1 |
| BIOLOGY | 1 |
| MEDICAL INFORMATICS | 1 |

Total number of outputs: selected types of outputs published in 2010-2014 and registered in the institutional research information system: journal article, monograph, monograph chapter, proceedings paper, patent, utility model, industrial design, prototype, functional specimen, norms and directives, specialized map, realized certified methodology, software, pilot plant, verified technology, plant breed/variety.

Evaluated outputs: outputs submitted by the team and evaluated in the Phase I (value in the brackets shows number of outputs submitted by the team but not evaluated in the Phase I).

Outputs for bibliometry: publications in 2010-2014 with less than 30 authors registered in the Web of Science; document type: article, review or proceedings paper.

Large collaborations outputs: publications in 2010-2014 with more than 30 authors registered in the Web of Science; document type: article, review or proceedings paper.

Quality Profile: number of evaluated outputs vs quality groups (5 groups); 'world-leading' quality denotes an absolute standard of quality in each field and subfield; 'world leading', 'internationally' and 'nationally' in this context refer to quality standards; they do not refer to the nature or geographical scope of particular subjects, nor to the focus of research nor its place of dissemination; for example, research which is focused on the subject specific to the Czech Republic might be of 'world leading' standard, on the contrary, work with an international focus might not be of 'world leading, internationally excellent or internationally recognized' standard.

Quality of Outputs by Journals Ranking: number of outputs in top decile (1*) and quartiles (1-4) by AIS of journals; n. a. - outputs in journals without AIS; if the output is assigned to more than one field, the mean value of quartile is taken (values from 0,1 to 0,5 rounded down); orange: outputs submitted by the team to the Evaluation, blue: other outputs by the team.

Quality of Outputs by Number of Citations: number of outputs in the top decile (1*) and in quartiles (1, 2, 3+4) of the list of outputs ordered by the number of citations; n. a. - the number of outputs in the field is low and/or the number of citations is not sufficient for relevant judgement; if the output is assigned to more than one field, the mean value of quartile is taken (values from 0,1 to 0,5 rounded down); orange: outputs submitted by the team to the Evaluation, blue: other outputs by the team.

Quality of Outputs by Citation Sources: fraction of citations of all outputs in the top quartile (TOP25) or the top half (TOP50) of list of journals ordered by AIS; fraction of "not cited" outputs is added; orange: outputs submitted by the team to the Evaluation, blue: other outputs by the team.

Field Structure of Outputs: number of outputs of the team in different fields; if the output is assigned to more than one field, the field where the publication performs best (assessed by Quality of Outputs by Journals Ranking) is taken; the table shows up to 30 fields.

Evaluation of the Research and Professional Activities of the Institutes of the Czech Academy of Sciences for 2010–2014
RESULTS OF THE PHASE I. AND BIBLIOMETRIC PARAMETERS

Institute: Institute of Molecular Genetics of the CAS, v. v. i.

Team: Laboratory of Signal Transduction

Head: RNDr. Petr Dráber, DrSc.

Total number of outputs : 40 **Evaluated outputs :** 8 (0) **Outputs for bibliometry :** 13 **Large collaborations outputs:** 0

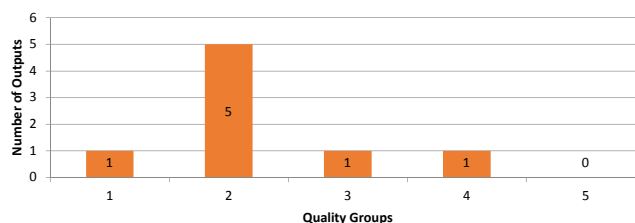
Quality Groups of Outputs (Results of the Phase I.)

| | | | | | |
|---------|---|---|---|---|---|
| Quality | 1 | 2 | 3 | 4 | 5 |
| Outputs | 1 | 5 | 1 | 1 | 0 |

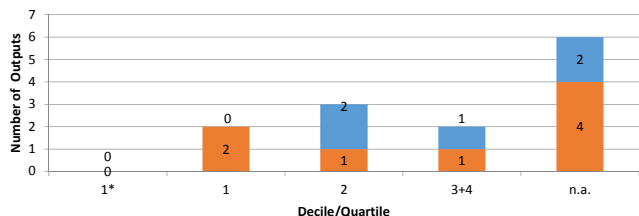
Quality Groups:

- (1): Quality that is **world-leading** in terms of originality, significance and rigour.
- (2): Quality that is **internationally excellent** in terms of originality, significance and rigour but which falls short of the highest standards of excellence.
- (3): Quality that is **recognized internationally** in terms of originality, significance and rigour.
- (4): Quality that is **recognized nationally** in terms of originality, significance and rigour.
- (5): Quality that falls **below the standard** of nationally recognized work. Or work which does not meet the published definition of research for the purposes of this assessment.

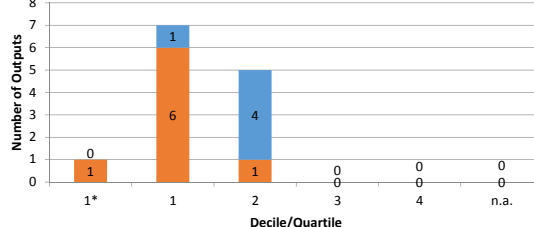
Quality Profile



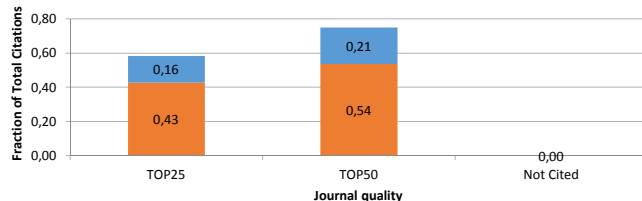
Quality of Outputs by Number of Citations



Quality of Outputs by Journals Ranking



Quality of Outputs by Citation Sources



Field Structure of Outputs

| Field | Outputs |
|--------------------------------------|---------|
| BIOCHEMISTRY & MOLECULAR BIOLOGY | 5 |
| BIOCHEMICAL RESEARCH METHODS | 2 |
| IMMUNOLOGY | 2 |
| BIOTECHNOLOGY & APPLIED MICROBIOLOGY | 1 |
| MULTIDISCIPLINARY SCIENCES | 1 |
| ALLERGY | 1 |
| BIOPHYSICS | 1 |

Total number of outputs: selected types of outputs published in 2010-2014 and registered in the institutional research information system: journal article, monograph, monograph chapter, proceedings paper, patent, utility model, industrial design, prototype, functional specimen, norms and directives, specialized map, realized certified methodology, software, pilot plant, verified technology, plant breed/variety.

Evaluated outputs: outputs submitted by the team and evaluated in the Phase I (value in the brackets shows number of outputs submitted by the team but not evaluated in the Phase I).

Outputs for bibliometry: publications in 2010-2014 with less than 30 authors registered in the Web of Science; document type: article, review or proceedings paper.

Large collaborations outputs: publications in 2010-2014 with more than 30 authors registered in the Web of Science; document type: article, review or proceedings paper.

Quality Profile: number of evaluated outputs vs quality groups (5 groups); 'world-leading' quality denotes an absolute standard of quality in each field and subfield; 'world leading', 'internationally' and 'nationally' in this context refer to quality standards; they do not refer to the nature or geographical scope of particular subjects, nor to the focus of research nor its place of dissemination; for example, research which is focused on the subject specific to the Czech Republic might be of 'world leading' standard, on the contrary, work with an international focus might not be of 'world leading, internationally excellent or internationally recognized' standard.

Quality of Outputs by Journals Ranking: number of outputs in top decile (1*) and quartiles (1-4) by AIS of journals; n. a. - outputs in journals without AIS; if the output is assigned to more than one field, the mean value of quartile is taken (values from 0,1 to 0,5 rounded down); orange: outputs submitted by the team to the Evaluation, blue: other outputs by the team.

Quality of Outputs by Number of Citations: number of outputs in the top decile (1*) and in quartiles (1, 2, 3+4) of the list of outputs ordered by the number of citations; n. a. - the number of outputs in the field is low and/or the number of citations is not sufficient for relevant judgement; if the output is assigned to more than one field, the mean value of quartile is taken (values from 0,1 to 0,5 rounded down); orange: outputs submitted by the team to the Evaluation, blue: other outputs by the team.

Quality of Outputs by Citation Sources: fraction of citations of all outputs in the top quartile (TOP25) or the top half (TOP50) of list of journals ordered by AIS; fraction of "not cited" outputs is added; orange: outputs submitted by the team to the Evaluation, blue: other outputs by the team.

Field Structure of Outputs: number of outputs of the team in different fields; if the output is assigned to more than one field, the field where the publication performs best (assessed by Quality of Outputs by Journals Ranking) is taken; the table shows up to 30 fields.

Evaluation of the Research and Professional Activities of the Institutes of the Czech Academy of Sciences for 2010–2014
RESULTS OF THE PHASE I. AND BIBLIOMETRIC PARAMETERS

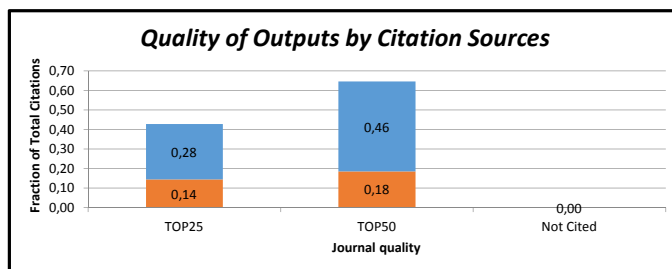
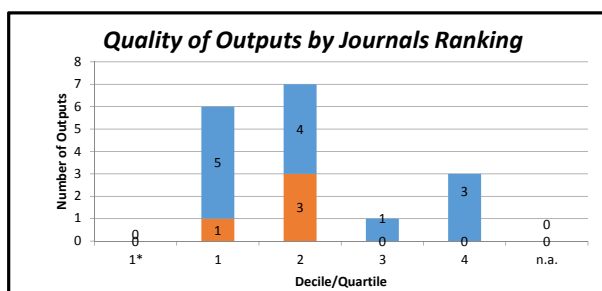
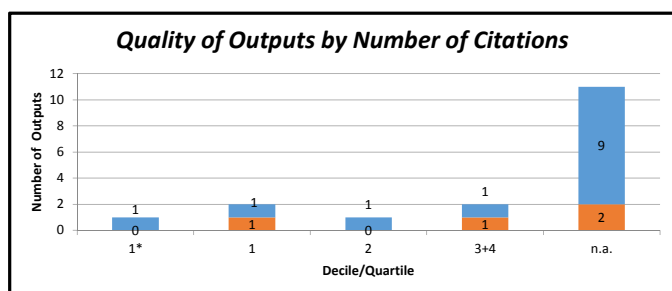
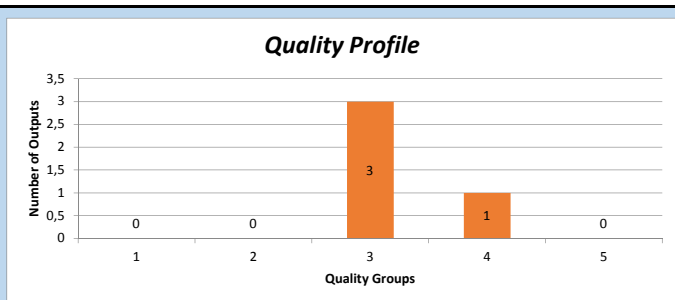
Institute: Institute of Molecular Genetics of the CAS, v. v. i.
Team: Laboratory of Cell Signalling and Apoptosis
Head: RNDr. Ladislav Anděra, CSc.
Total number of outputs : 17 **Evaluated outputs :** 4 (0) **Outputs for bibliometry :** 17 **Large collaborations outputs:** 0

Quality Groups of Outputs (Results of the Phase I.)

| | | | | | |
|---------|---|---|---|---|---|
| Quality | 1 | 2 | 3 | 4 | 5 |
| Outputs | 0 | 0 | 3 | 1 | 0 |

Quality Groups:

- (1): Quality that is **world-leading** in terms of originality, significance and rigour.
- (2): Quality that is **internationally excellent** in terms of originality, significance and rigour but which falls short of the highest standards of excellence.
- (3): Quality that is **recognized internationally** in terms of originality, significance and rigour.
- (4): Quality that is **recognized nationally** in terms of originality, significance and rigour.
- (5): Quality that falls **below the standard** of nationally recognized work. Or work which does not meet the published definition of research for the purposes of this assessment.



| Field Structure of Outputs | Outputs |
|-----------------------------------|---------|
| ONCOLOGY | 5 |
| BIOCHEMISTRY & MOLECULAR BIOLOGY | 5 |
| CELL BIOLOGY | 2 |
| MEDICINE, RESEARCH & EXPERIMENTAL | 1 |
| BIOLOGY | 1 |
| PHARMACOLOGY & PHARMACY | 1 |
| CHEMISTRY, MEDICINAL | 1 |
| HEMATOLOGY | 1 |

Total number of outputs: selected types of outputs published in 2010-2014 and registered in the institutional research information system: journal article, monograph, monograph chapter, proceedings paper, patent, utility model, industrial design, prototype, functional specimen, norms and directives, specialized map, realized certified methodology, software, pilot plant, verified technology, plant breed/variety.

Evaluated outputs: outputs submitted by the team and evaluated in the Phase I (value in the brackets shows number of outputs submitted by the team but not evaluated in the Phase I).

Outputs for bibliometry: publications in 2010-2014 with less than 30 authors registered in the Web of Science; document type: article, review or proceedings paper.

Large collaborations outputs: publications in 2010-2014 with more than 30 authors registered in the Web of Science; document type: article, review or proceedings paper.

Quality Profile: number of evaluated outputs vs quality groups (5 groups); 'world-leading' quality denotes an absolute standard of quality in each field and subfield; 'world leading', 'internationally' and 'nationally' in this context refer to quality standards; they do not refer to the nature or geographical scope of particular subjects, nor to the focus of research nor its place of dissemination; for example, research which is focused on the subject specific to the Czech Republic might be of 'world leading' standard, on the contrary, work with an international focus might not be of 'world leading, internationally excellent or internationally recognized' standard.

Quality of Outputs by Journals Ranking: number of outputs in top decile (1*) and quartiles (1-4) by AIS of journals; n. a. - outputs in journals without AIS; if the output is assigned to more than one field, the mean value of quartile is taken (values from 0,1 to 0,5 rounded down); orange: outputs submitted by the team to the Evaluation, blue: other outputs by the team.

Quality of Outputs by Number of Citations: number of outputs in the top decile (1*) and in quartiles (1, 2, 3+4) of the list of outputs ordered by the number of citations; n. a. - the number of outputs in the field is low and/or the number of citations is not sufficient for relevant judgement; if the output is assigned to more than one field, the mean value of quartile is taken (values from 0,1 to 0,5 rounded down); orange: outputs submitted by the team to the Evaluation, blue: other outputs by the team.

Quality of Outputs by Citation Sources: fraction of citations of all outputs in the top quartile (TOP25) or the top half (TOP50) of list of journals ordered by AIS; fraction of "not cited" outputs is added; orange: outputs submitted by the team to the Evaluation, blue: other outputs by the team.

Field Structure of Outputs: number of outputs of the team in different fields; if the output is assigned to more than one field, the field where the publication performs best (assessed by Quality of Outputs by Journals Ranking) is taken; the table shows up to 30 fields.

Evaluation of the Research and Professional Activities of the Institutes of the Czech Academy of Sciences for 2010–2014
RESULTS OF THE PHASE I. AND BIBLIOMETRIC PARAMETERS

Institute: Institute of Molecular Genetics of the CAS, v. v. i.

Team: Laboratory of Molecular Immunology

Head: Prof. RNDr. Václav Hořejší, CSc.

Total number of outputs : 30 **Evaluated outputs :** 8 (0) **Outputs for bibliometry :** 23 **Large collaborations outputs:** 0

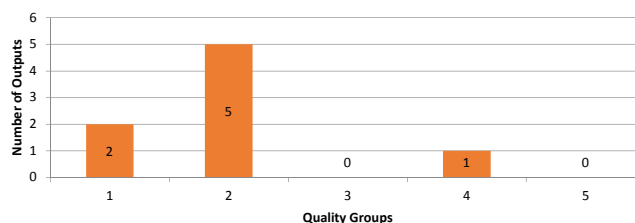
Quality Groups of Outputs (Results of the Phase I.)

| | | | | | |
|---------|---|---|---|---|---|
| Quality | 1 | 2 | 3 | 4 | 5 |
| Outputs | 2 | 5 | 0 | 1 | 0 |

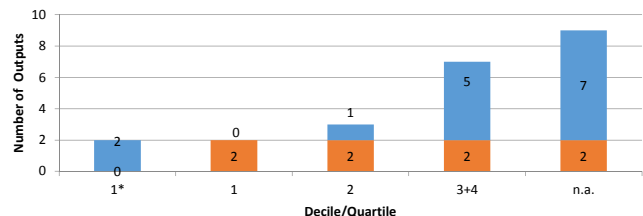
Quality Groups:

- (1): Quality that is **world-leading** in terms of originality, significance and rigour.
- (2): Quality that is **internationally excellent** in terms of originality, significance and rigour but which falls short of the highest standards of excellence.
- (3): Quality that is **recognized internationally** in terms of originality, significance and rigour.
- (4): Quality that is **recognized nationally** in terms of originality, significance and rigour.
- (5): Quality that falls **below the standard** of nationally recognized work. Or work which does not meet the published definition of research for the purposes of this assessment.

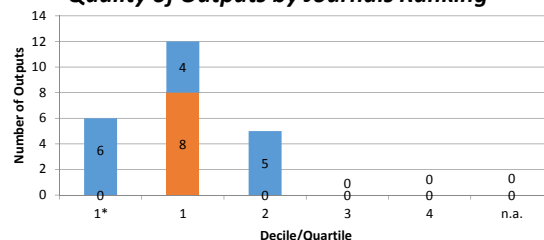
Quality Profile



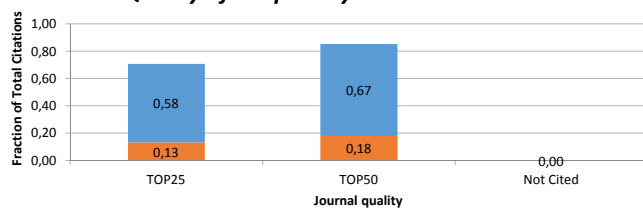
Quality of Outputs by Number of Citations



Quality of Outputs by Journals Ranking



Quality of Outputs by Citation Sources



Field Structure of Outputs

| Field | Outputs |
|----------------------------------|---------|
| BIOCHEMISTRY & MOLECULAR BIOLOGY | 6 |
| CELL BIOLOGY | 4 |
| HEMATOLOGY | 3 |
| IMMUNOLOGY | 2 |
| MULTIDISCIPLINARY SCIENCES | 2 |
| BIOPHYSICS | 1 |
| MICROBIOLOGY | 1 |
| ONCOLOGY | 1 |
| BIOLOGY | 1 |
| BIOCHEMICAL RESEARCH METHODS | 1 |
| GENETICS & HEREDITY | 1 |

Total number of outputs: selected types of outputs published in 2010-2014 and registered in the institutional research information system: journal article, monograph, monograph chapter, proceedings paper, patent, utility model, industrial design, prototype, functional specimen, norms and directives, specialized map, realized certified methodology, software, pilot plant, verified technology, plant breed/variety.

Evaluated outputs: outputs submitted by the team and evaluated in the Phase I (value in the brackets shows number of outputs submitted by the team but not evaluated in the Phase I).

Outputs for bibliometry: publications in 2010-2014 with less than 30 authors registered in the Web of Science; document type: article, review or proceedings paper.

Large collaborations outputs: publications in 2010-2014 with more than 30 authors registered in the Web of Science; document type: article, review or proceedings paper.

Quality Profile: number of evaluated outputs vs quality groups (5 groups); 'world-leading' quality denotes an absolute standard of quality in each field and subfield; 'world leading', 'internationally' and 'nationally' in this context refer to quality standards; they do not refer to the nature or geographical scope of particular subjects, nor to the focus of research nor its place of dissemination; for example, research which is focused on the subject specific to the Czech Republic might be of 'world leading' standard, on the contrary, work with an international focus might not be of 'world leading, internationally excellent or internationally recognized' standard.

Quality of Outputs by Journals Ranking: number of outputs in top decile (1*) and quartiles (1-4) by AIS of journals; n. a. - outputs in journals without AIS; if the output is assigned to more than one field, the mean value of quartile is taken (values from 0,1 to 0,5 rounded down); orange: outputs submitted by the team to the Evaluation, blue: other outputs by the team.

Quality of Outputs by Number of Citations: number of outputs in the top decile (1*) and in quartiles (1, 2, 3+4) of the list of outputs ordered by the number of citations; n. a. - the number of outputs in the field is low and/or the number of citations is not sufficient for relevant judgement; if the output is assigned to more than one field, the mean value of quartile is taken (values from 0,1 to 0,5 rounded down); orange: outputs submitted by the team to the Evaluation, blue: other outputs by the team.

Quality of Outputs by Citation Sources: fraction of citations of all outputs in the top quartile (TOP25) or the top half (TOP50) of list of journals ordered by AIS; fraction of "not cited" outputs is added; orange: outputs submitted by the team to the Evaluation, blue: other outputs by the team.

Field Structure of Outputs: number of outputs of the team in different fields; if the output is assigned to more than one field, the field where the publication performs best (assessed by Quality of Outputs by Journals Ranking) is taken; the table shows up to 30 fields.

Evaluation of the Research and Professional Activities of the Institutes of the Czech Academy of Sciences for 2010–2014
RESULTS OF THE PHASE I. AND BIBLIOMETRIC PARAMETERS

Institute: Institute of Molecular Genetics of the CAS, v. v. i.

Team: Laboratory of Biology of Cytoskeleton

Head: Doc. RNDr. Pavel Dráber, CSc.

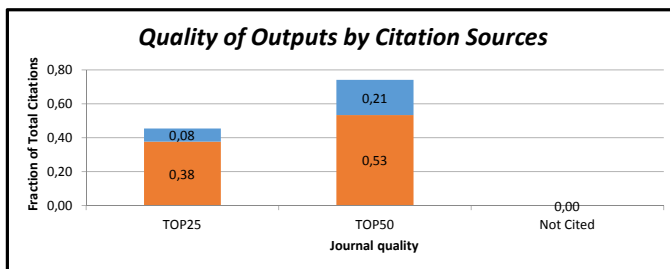
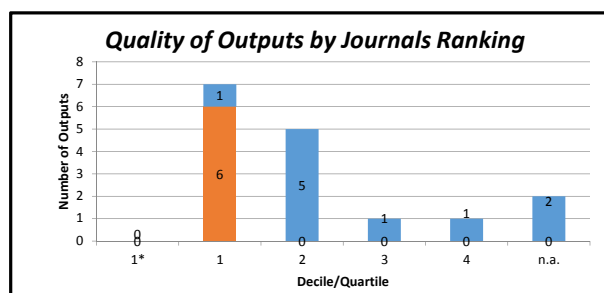
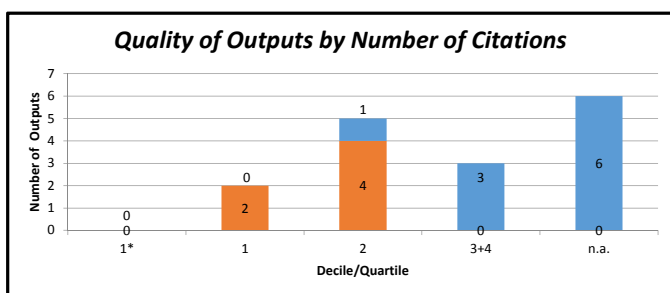
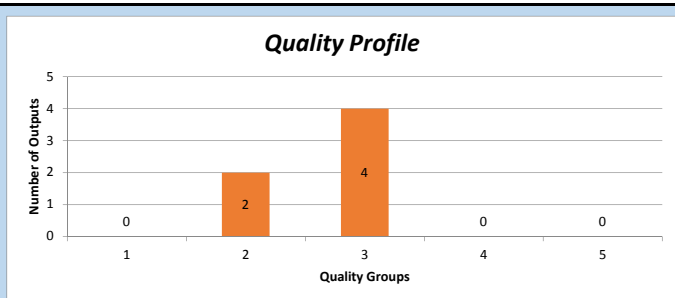
Total number of outputs : 25 **Evaluated outputs :** 6 (0) **Outputs for bibliometry :** 16 **Large collaborations outputs:** 0

Quality Groups of Outputs (Results of the Phase I.)

| | | | | | |
|---------|---|---|---|---|---|
| Quality | 1 | 2 | 3 | 4 | 5 |
| Outputs | 0 | 2 | 4 | 0 | 0 |

Quality Groups:

- (1): Quality that is **world-leading** in terms of originality, significance and rigour.
- (2): Quality that is **internationally excellent** in terms of originality, significance and rigour but which falls short of the highest standards of excellence.
- (3): Quality that is **recognized internationally** in terms of originality, significance and rigour.
- (4): Quality that is **recognized nationally** in terms of originality, significance and rigour.
- (5): Quality that falls **below the standard** of nationally recognized work. Or work which does not meet the published definition of research for the purposes of this assessment.



| Field Structure of Outputs | Outputs |
|------------------------------|---------|
| BIOCHEMICAL RESEARCH METHODS | 3 |
| PHYSIOLOGY | 2 |
| CLINICAL NEUROLOGY | 1 |
| PATHOLOGY | 1 |
| CELL BIOLOGY | 1 |
| CHEMISTRY, ANALYTICAL | 1 |
| PEDIATRICS | 1 |
| PHARMACOLOGY & PHARMACY | 1 |
| PLANT SCIENCES | 1 |
| IMMUNOLOGY | 1 |
| VIROLOGY | 1 |
| MULTIDISCIPLINARY SCIENCES | 1 |
| ONCOLOGY | 1 |

Total number of outputs: selected types of outputs published in 2010-2014 and registered in the institutional research information system: journal article, monograph, monograph chapter, proceedings paper, patent, utility model, industrial design, prototype, functional specimen, norms and directives, specialized map, realized certified methodology, software, pilot plant, verified technology, plant breed/variety.

Evaluated outputs: outputs submitted by the team and evaluated in the Phase I (value in the brackets shows number of outputs submitted by the team but not evaluated in the Phase I).

Outputs for bibliometry: publications in 2010-2014 with less than 30 authors registered in the Web of Science; document type: article, review or proceedings paper.

Large collaborations outputs: publications in 2010-2014 with more than 30 authors registered in the Web of Science; document type: article, review or proceedings paper.

Quality Profile: number of evaluated outputs vs quality groups (5 groups); 'world-leading' quality denotes an absolute standard of quality in each field and subfield; 'world leading', 'internationally' and 'nationally' in this context refer to quality standards; they do not refer to the nature or geographical scope of particular subjects, nor to the focus of research nor its place of dissemination; for example, research which is focused on the subject specific to the Czech Republic might be of 'world leading' standard, on the contrary, work with an international focus might not be of 'world leading, internationally excellent or internationally recognized' standard.

Quality of Outputs by Journals Ranking: number of outputs in top decile (1*) and quartiles (1-4) by AIS of journals; n. a. - outputs in journals without AIS; if the output is assigned to more than one field, the mean value of quartile is taken (values from 0,1 to 0,5 rounded down); orange: outputs submitted by the team to the Evaluation, blue: other outputs by the team.

Quality of Outputs by Number of Citations: number of outputs in the top decile (1*) and in quartiles (1, 2, 3+4) of the list of outputs ordered by the number of citations; n. a. - the number of outputs in the field is low and/or the number of citations is not sufficient for relevant judgement; if the output is assigned to more than one field, the mean value of quartile is taken (values from 0,1 to 0,5 rounded down); orange: outputs submitted by the team to the Evaluation, blue: other outputs by the team.

Quality of Outputs by Citation Sources: fraction of citations of all outputs in the top quartile (TOP25) or the top half (TOP50) of list of journals ordered by AIS; fraction of "not cited" outputs is added; orange: outputs submitted by the team to the Evaluation, blue: other outputs by the team.

Field Structure of Outputs: number of outputs of the team in different fields; if the output is assigned to more than one field, the field where the publication performs best (assessed by Quality of Outputs by Journals Ranking) is taken; the table shows up to 30 fields.

Evaluation of the Research and Professional Activities of the Institutes of the Czech Academy of Sciences for 2010–2014
RESULTS OF THE PHASE I. AND BIBLIOMETRIC PARAMETERS

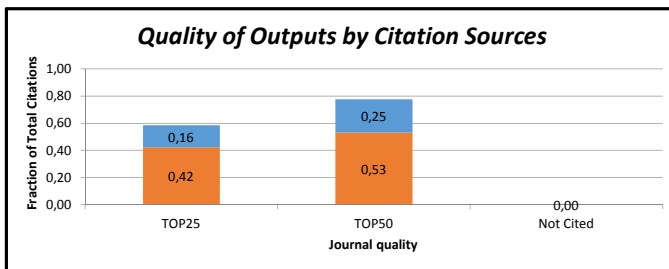
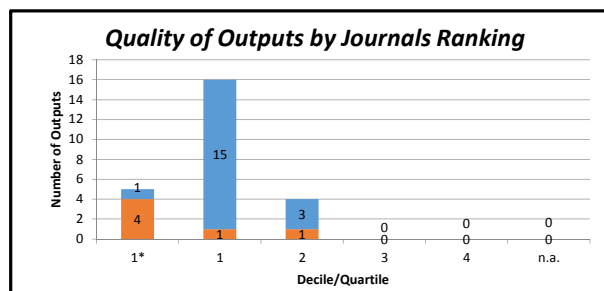
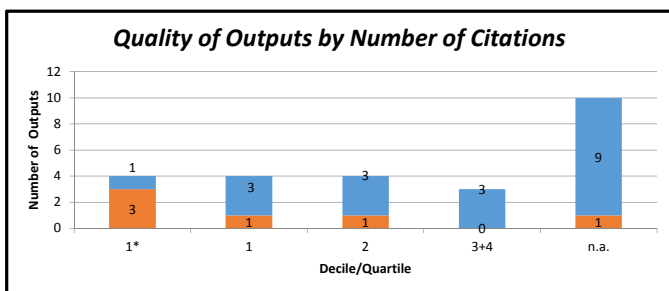
Institute: Institute of Molecular Genetics of the CAS, v. v. i.
Team: Laboratory of Epigenetic Regulations
Head: Doc. Mgr. Petr Svoboda, PhD.
Total number of outputs : 35 **Evaluated outputs :** 6 (0) **Outputs for bibliometry :** 25 **Large collaborations outputs:** 0

Quality Groups of Outputs (Results of the Phase I.)

| | | | | | |
|---------|---|---|---|---|---|
| Quality | 1 | 2 | 3 | 4 | 5 |
| Outputs | 2 | 3 | 1 | 0 | 0 |

Quality Groups:

- (1): Quality that is **world-leading** in terms of originality, significance and rigour.
- (2): Quality that is **internationally excellent** in terms of originality, significance and rigour but which falls short of the highest standards of excellence.
- (3): Quality that is **recognized internationally** in terms of originality, significance and rigour.
- (4): Quality that is **recognized nationally** in terms of originality, significance and rigour.
- (5): Quality that falls **below the standard** of nationally recognized work. Or work which does not meet the published definition of research for the purposes of this assessment.



| Field Structure of Outputs | Outputs |
|--------------------------------------|---------|
| BIOCHEMISTRY & MOLECULAR BIOLOGY | 5 |
| MULTIDISCIPLINARY SCIENCES | 4 |
| REPRODUCTIVE BIOLOGY | 3 |
| BIOTECHNOLOGY & APPLIED MICROBIOLOGY | 3 |
| TRANSPLANTATION | 2 |
| CELL BIOLOGY | 2 |
| PHARMACOLOGY & PHARMACY | 1 |
| AGRICULTURE, DAIRY & ANIMAL SCIENCE | 1 |
| BIOCHEMICAL RESEARCH METHODS | 1 |
| CHEMISTRY, MEDICINAL | 1 |
| DEVELOPMENTAL BIOLOGY | 1 |
| BIOPHYSICS | 1 |

Total number of outputs: selected types of outputs published in 2010-2014 and registered in the institutional research information system: journal article, monograph, monograph chapter, proceedings paper, patent, utility model, industrial design, prototype, functional specimen, norms and directives, specialized map, realized certified methodology, software, pilot plant, verified technology, plant breed/variety.

Evaluated outputs: outputs submitted by the team and evaluated in the Phase I (value in the brackets shows number of outputs submitted by the team but not evaluated in the Phase I).

Outputs for bibliometry: publications in 2010-2014 with less than 30 authors registered in the Web of Science; document type: article, review or proceedings paper.

Large collaborations outputs: publications in 2010-2014 with more than 30 authors registered in the Web of Science; document type: article, review or proceedings paper.

Quality Profile: number of evaluated outputs vs quality groups (5 groups); 'world-leading' quality denotes an absolute standard of quality in each field and subfield; 'world leading', 'internationally' and 'nationally' in this context refer to quality standards; they do not refer to the nature or geographical scope of particular subjects, nor to the focus of research nor its place of dissemination; for example, research which is focused on the subject specific to the Czech Republic might be of 'world leading' standard, on the contrary, work with an international focus might not be of 'world leading, internationally excellent or internationally recognized' standard.

Quality of Outputs by Journals Ranking: number of outputs in top decile (1*) and quartiles (1-4) by AIS of journals; n. a. - outputs in journals without AIS; if the output is assigned to more than one field, the mean value of quartile is taken (values from 0,1 to 0,5 rounded down); orange: outputs submitted by the team to the Evaluation, blue: other outputs by the team.

Quality of Outputs by Number of Citations: number of outputs in the top decile (1*) and in quartiles (1, 2, 3+4) of the list of outputs ordered by the number of citations; n. a. - the number of outputs in the field is low and/or the number of citations is not sufficient for relevant judgement; if the output is assigned to more than one field, the mean value of quartile is taken (values from 0,1 to 0,5 rounded down); orange: outputs submitted by the team to the Evaluation, blue: other outputs by the team.

Quality of Outputs by Citation Sources: fraction of citations of all outputs in the top quartile (TOP25) or the top half (TOP50) of list of journals ordered by AIS; fraction of "not cited" outputs is added; orange: outputs submitted by the team to the Evaluation, blue: other outputs by the team.

Field Structure of Outputs: number of outputs of the team in different fields; if the output is assigned to more than one field, the field where the publication performs best (assessed by Quality of Outputs by Journals Ranking) is taken; the table shows up to 30 fields.

Evaluation of the Research and Professional Activities of the Institutes of the Czech Academy of Sciences for 2010–2014
RESULTS OF THE PHASE I. AND BIBLIOMETRIC PARAMETERS

Institute: Institute of Molecular Genetics of the CAS, v. v. i.

Team: Laboratory of Transcriptional Regulation

Head: RNDr. Zbyněk Kozmik, CSc.

Total number of outputs : 25 **Evaluated outputs :** 8 (0) **Outputs for bibliometry :** 25 **Large collaborations outputs:** 0

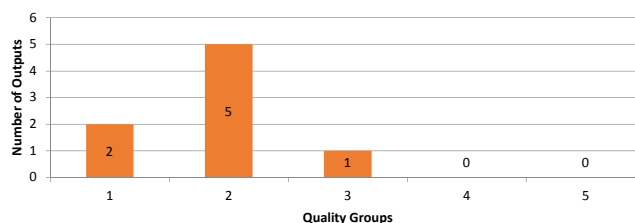
Quality Groups of Outputs (Results of the Phase I.)

| | | | | | |
|---------|---|---|---|---|---|
| Quality | 1 | 2 | 3 | 4 | 5 |
| Outputs | 2 | 5 | 1 | 0 | 0 |

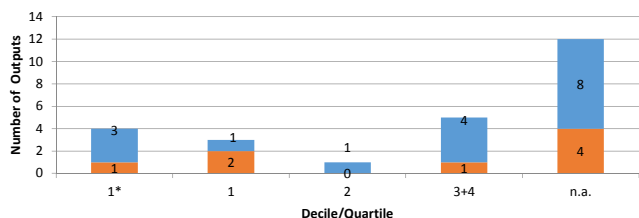
Quality Groups:

- (1): Quality that is **world-leading** in terms of originality, significance and rigour.
- (2): Quality that is **internationally excellent** in terms of originality, significance and rigour but which falls short of the highest standards of excellence.
- (3): Quality that is **recognized internationally** in terms of originality, significance and rigour.
- (4): Quality that is **recognized nationally** in terms of originality, significance and rigour.
- (5): Quality that falls **below the standard** of nationally recognized work. Or work which does not meet the published definition of research for the purposes of this assessment.

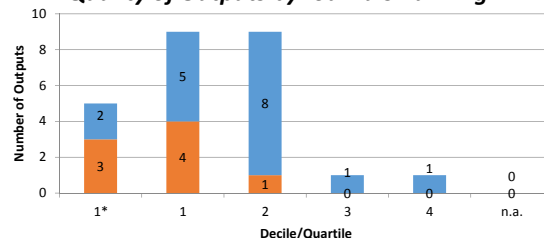
Quality Profile



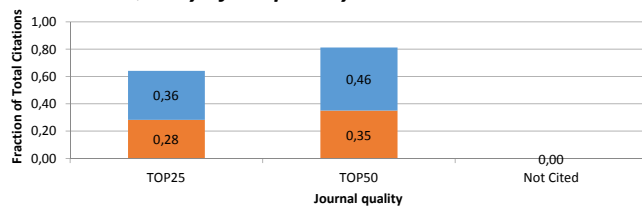
Quality of Outputs by Number of Citations



Quality of Outputs by Journals Ranking



Quality of Outputs by Citation Sources



Field Structure of Outputs

| Field | Outputs |
|----------------------------------|---------|
| BIOCHEMISTRY & MOLECULAR BIOLOGY | 6 |
| MULTIDISCIPLINARY SCIENCES | 4 |
| DEVELOPMENTAL BIOLOGY | 4 |
| ONCOLOGY | 3 |
| ZOOLOGY | 2 |
| BIOLOGY | 2 |
| HEMATOLOGY | 1 |
| BIOCHEMICAL RESEARCH METHODS | 1 |
| CELL BIOLOGY | 1 |
| NEUROSCIENCES | 1 |

Total number of outputs: selected types of outputs published in 2010-2014 and registered in the institutional research information system: journal article, monograph, monograph chapter, proceedings paper, patent, utility model, industrial design, prototype, functional specimen, norms and directives, specialized map, realized certified methodology, software, pilot plant, verified technology, plant breed/variety.

Evaluated outputs: outputs submitted by the team and evaluated in the Phase I (value in the brackets shows number of outputs submitted by the team but not evaluated in the Phase I).

Outputs for bibliometry: publications in 2010-2014 with less than 30 authors registered in the Web of Science; document type: article, review or proceedings paper.

Large collaborations outputs: publications in 2010-2014 with more than 30 authors registered in the Web of Science; document type: article, review or proceedings paper.

Quality Profile: number of evaluated outputs vs quality groups (5 groups); 'world-leading' quality denotes an absolute standard of quality in each field and subfield; 'world leading', 'internationally' and 'nationally' in this context refer to quality standards; they do not refer to the nature or geographical scope of particular subjects, nor to the focus of research nor its place of dissemination; for example, research which is focused on the subject specific to the Czech Republic might be of 'world leading' standard, on the contrary, work with an international focus might not be of 'world leading, internationally excellent or internationally recognized' standard.

Quality of Outputs by Journals Ranking: number of outputs in top decile (1*) and quartiles (1-4) by AIS of journals; n. a. - outputs in journals without AIS; if the output is assigned to more than one field, the mean value of quartile is taken (values from 0,1 to 0,5 rounded down); orange: outputs submitted by the team to the Evaluation, blue: other outputs by the team.

Quality of Outputs by Number of Citations: number of outputs in the top decile (1*) and in quartiles (1, 2, 3+4) of the list of outputs ordered by the number of citations; n. a. - the number of outputs in the field is low and/or the number of citations is not sufficient for relevant judgement; if the output is assigned to more than one field, the mean value of quartile is taken (values from 0,1 to 0,5 rounded down); orange: outputs submitted by the team to the Evaluation, blue: other outputs by the team.

Quality of Outputs by Citation Sources: fraction of citations of all outputs in the top quartile (TOP25) or the top half (TOP50) of list of journals ordered by AIS; fraction of "not cited" outputs is added; orange: outputs submitted by the team to the Evaluation, blue: other outputs by the team.

Field Structure of Outputs: number of outputs of the team in different fields; if the output is assigned to more than one field, the field where the publication performs best (assessed by Quality of Outputs by Journals Ranking) is taken; the table shows up to 30 fields.

Evaluation of the Research and Professional Activities of the Institutes of the Czech Academy of Sciences for 2010–2014
RESULTS OF THE PHASE I. AND BIBLIOMETRIC PARAMETERS

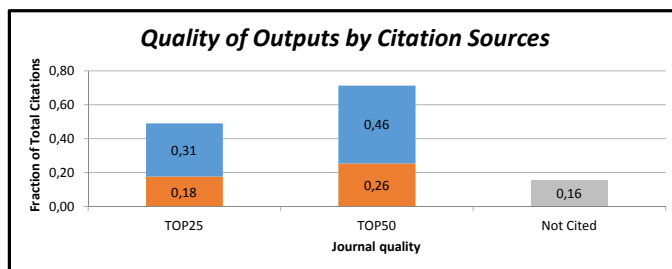
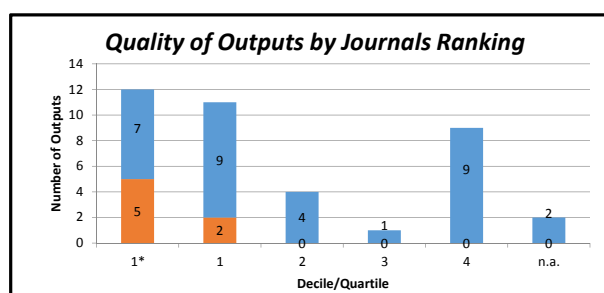
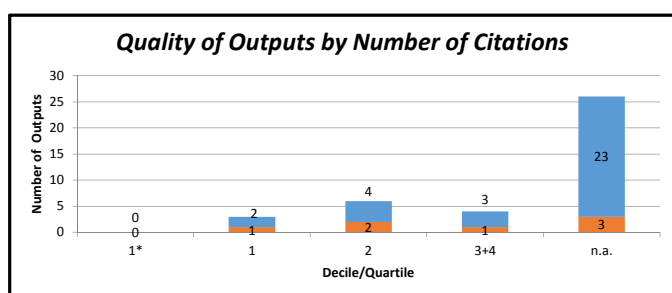
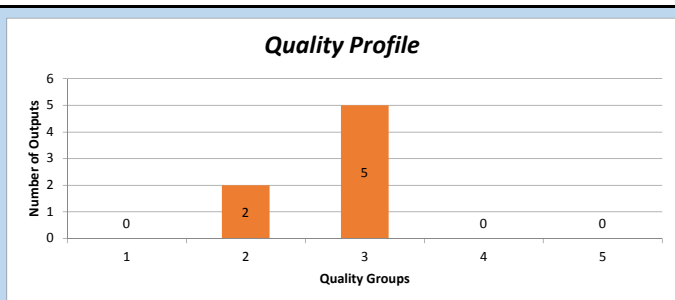
Institute: Institute of Molecular Genetics of the CAS, v. v. i.
Team: Laboratory of Structural Biology
Head: Mgr. Pavlína Maloy Řezáčová, PhD.
Total number of outputs : 46 **Evaluated outputs :** 7 (0) **Outputs for bibliometry :** 39 **Large collaborations outputs:** 0

Quality Groups of Outputs (Results of the Phase I.)

| | | | | | |
|---------|---|---|---|---|---|
| Quality | 1 | 2 | 3 | 4 | 5 |
| Outputs | 0 | 2 | 5 | 0 | 0 |

Quality Groups:

- (1): Quality that is **world-leading** in terms of originality, significance and rigour.
- (2): Quality that is **internationally excellent** in terms of originality, significance and rigour but which falls short of the highest standards of excellence.
- (3): Quality that is **recognized internationally** in terms of originality, significance and rigour.
- (4): Quality that is **recognized nationally** in terms of originality, significance and rigour.
- (5): Quality that falls **below the standard** of nationally recognized work. Or work which does not meet the published definition of research for the purposes of this assessment.



| Field Structure of Outputs | Outputs |
|--------------------------------------|---------|
| CRYSTALLOGRAPHY | 9 |
| BIOCHEMICAL RESEARCH METHODS | 6 |
| BIOCHEMISTRY & MOLECULAR BIOLOGY | 5 |
| CHEMISTRY, MULTIDISCIPLINARY | 4 |
| CHEMISTRY, MEDICINAL | 4 |
| POLYMER SCIENCE | 2 |
| CHEMISTRY, ORGANIC | 2 |
| CHEMISTRY, PHYSICAL | 1 |
| VIROLOGY | 1 |
| OPHTHALMOLOGY | 1 |
| BIOPHYSICS | 1 |
| HEMATOLOGY | 1 |
| BIOTECHNOLOGY & APPLIED MICROBIOLOGY | 1 |
| CHEMISTRY, ANALYTICAL | 1 |

Total number of outputs: selected types of outputs published in 2010-2014 and registered in the institutional research information system: journal article, monograph, monograph chapter, proceedings paper, patent, utility model, industrial design, prototype, functional specimen, norms and directives, specialized map, realized certified methodology, software, pilot plant, verified technology, plant breed/variety.

Evaluated outputs: outputs submitted by the team and evaluated in the Phase I (value in the brackets shows number of outputs submitted by the team but not evaluated in the Phase I).

Outputs for bibliometry: publications in 2010-2014 with less than 30 authors registered in the Web of Science; document type: article, review or proceedings paper.

Large collaborations outputs: publications in 2010-2014 with more than 30 authors registered in the Web of Science; document type: article, review or proceedings paper.

Quality Profile: number of evaluated outputs vs quality groups (5 groups); ‘world-leading’ quality denotes an absolute standard of quality in each field and subfield; ‘world leading’, ‘internationally’ and ‘nationally’ in this context refer to quality standards; they do not refer to the nature or geographical scope of particular subjects, nor to the focus of research nor its place of dissemination; for example, research which is focused on the subject specific to the Czech Republic might be of ‘world leading’ standard, on the contrary, work with an international focus might not be of ‘world leading, internationally excellent or internationally recognized’ standard.

Quality of Outputs by Journals Ranking: number of outputs in top decile (1*) and quartiles (1-4) by AIS of journals; n. a. - outputs in journals without AIS; if the output is assigned to more than one field, the mean value of quartile is taken (values from 0,1 to 0,5 rounded down); orange: outputs submitted by the team to the Evaluation, blue: other outputs by the team.

Quality of Outputs by Number of Citations: number of outputs in the top decile (1*) and in quartiles (1, 2, 3+4) of the list of outputs ordered by the number of citations; n. a. - the number of outputs in the field is low and/or the number of citations is not sufficient for relevant judgement; if the output is assigned to more than one field, the mean value of quartile is taken (values from 0,1 to 0,5 rounded down); orange: outputs submitted by the team to the Evaluation, blue: other outputs by the team.

Quality of Outputs by Citation Sources: fraction of citations of all outputs in the top quartile (TOP25) or the top half (TOP50) of list of journals ordered by AIS; fraction of “not cited” outputs is added; orange: outputs submitted by the team to the Evaluation, blue: other outputs by the team.

Field Structure of Outputs: number of outputs of the team in different fields; if the output is assigned to more than one field, the field where the publication performs best (assessed by Quality of Outputs by Journals Ranking) is taken; the table shows up to 30 fields.

Evaluation of the Research and Professional Activities of the Institutes of the Czech Academy of Sciences for 2010–2014
RESULTS OF THE PHASE I. AND BIBLIOMETRIC PARAMETERS

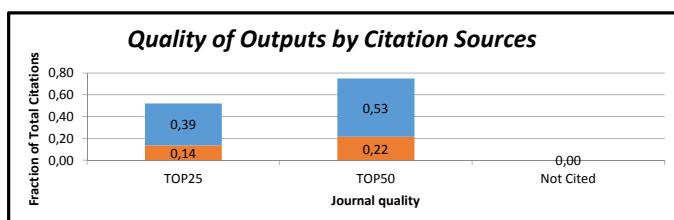
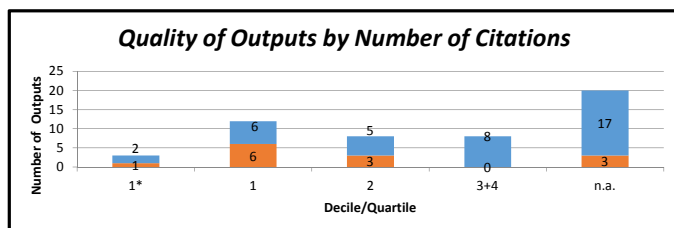
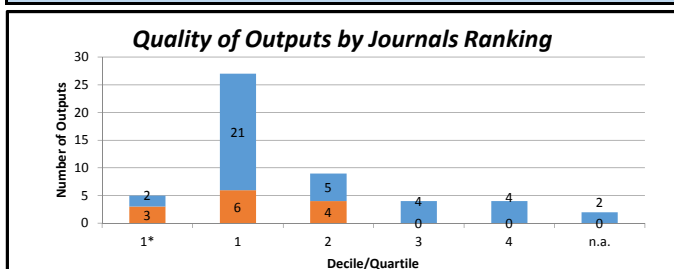
Institute: Institute of Molecular Genetics of the CAS, v. v. i.
Team: Laboratory of Genomics and Bioinformatics
Head: RNDr. Čestmír Vlček, CSc.
Total number of outputs : 57 **Evaluated outputs :** 13 (0) **Outputs for bibliometry :** 51 **Large collaborations outputs:** 0

Quality Groups of Outputs (Results of the Phase I.)

| | | | | | |
|---------|---|---|---|---|---|
| Quality | 1 | 2 | 3 | 4 | 5 |
| Outputs | 1 | 3 | 9 | 0 | 0 |

Quality Groups:

- (1): Quality that is **world-leading** in terms of originality, significance and rigour.
- (2): Quality that is **internationally excellent** in terms of originality, significance and rigour but which falls short of the highest standards of excellence.
- (3): Quality that is **recognized internationally** in terms of originality, significance and rigour.
- (4): Quality that is **recognized nationally** in terms of originality, significance and rigour.
- (5): Quality that falls **below the standard** of nationally recognized work. Or work which does not meet the published definition of research for the purposes of this assessment.



Field Structure of Outputs

| Field Structure of Outputs | Outputs |
|--------------------------------------|---------|
| MULTIDISCIPLINARY SCIENCES | 8 |
| BIOCHEMISTRY & MOLECULAR BIOLOGY | 7 |
| BIOTECHNOLOGY & APPLIED MICROBIOLOGY | 5 |
| MICROBIOLOGY | 4 |
| CELL BIOLOGY | 3 |
| IMMUNOLOGY | 3 |
| GASTROENTEROLOGY & HEPATOLOGY | 3 |
| ONCOLOGY | 2 |
| BIOLOGY | 2 |
| MICROSCOPY | 1 |
| ENDOCRINOLOGY & METABOLISM | 1 |
| EVOLUTIONARY BIOLOGY | 1 |
| VIROLOGY | 1 |
| BIOPHYSICS | 1 |
| BIOCHEMICAL RESEARCH METHODS | 1 |
| ECOLOGY | 1 |
| PLANT SCIENCES | 1 |
| FOOD SCIENCE & TECHNOLOGY | 1 |
| REPRODUCTIVE BIOLOGY | 1 |
| RESPIRATORY SYSTEM | 1 |
| MATHEMATICAL & COMPUTATIONAL BIOLOGY | 1 |
| MEDICINE, RESEARCH & EXPERIMENTAL | 1 |
| GENETICS & HEREDITY | 1 |

Total number of outputs: selected types of outputs published in 2010-2014 and registered in the institutional research information system: journal article, monograph, monograph chapter, proceedings paper, patent, utility model, industrial design, prototype, functional specimen, norms and directives, specialized map, realized certified methodology, software, pilot plant, verified technology, plant breed/variety.

Evaluated outputs: outputs submitted by the team and evaluated in the Phase I (value in the brackets shows number of outputs submitted by the team but not evaluated in the Phase I).

Outputs for bibliometry: publications in 2010-2014 with less than 30 authors registered in the Web of Science; document type: article, review or proceedings paper.

Large collaborations outputs: publications in 2010-2014 with more than 30 authors registered in the Web of Science; document type: article, review or proceedings paper.

Quality Profile: number of evaluated outputs vs quality groups (5 groups); ‘world-leading’ quality denotes an absolute standard of quality in each field and subfield; ‘world leading’, ‘internationally’ and ‘nationally’ in this context refer to quality standards; they do not refer to the nature or geographical scope of particular subjects, nor to the focus of research nor its place of dissemination; for example, research which is focused on the subject specific to the Czech Republic might be of ‘world leading’ standard, on the contrary, work with an international focus might not be of ‘world leading, internationally excellent or internationally recognized’ standard.

Quality of Outputs by Journals Ranking: number of outputs in top decile (1*) and quartiles (1-4) by AIS of journals; n. a. - outputs in journals without AIS; if the output is assigned to more than one field, the mean value of quartile is taken (values from 0,1 to 0,5 rounded down); orange: outputs submitted by the team to the Evaluation, blue: other outputs by the team.

Quality of Outputs by Number of Citations: number of outputs in the top decile (1*) and in quartiles (1, 2, 3+4) of the list of outputs ordered by the number of citations; n. a. - the number of outputs in the field is low and/or the number of citations is not sufficient for relevant judgement; if the output is assigned to more than one field, the mean value of quartile is taken (values from 0,1 to 0,5 rounded down); orange: outputs submitted by the team to the Evaluation, blue: other outputs by the team.

Quality of Outputs by Citation Sources: fraction of citations of all outputs in the top quartile (TOP25) or the top half (TOP50) of list of journals ordered by AIS; fraction of “not cited” outputs is added; orange: outputs submitted by the team to the Evaluation, blue: other outputs by the team.

Field Structure of Outputs: number of outputs of the team in different fields; if the output is assigned to more than one field, the field where the publication performs best (assessed by Quality of Outputs by Journals Ranking) is taken; the table shows up to 30 fields.

Evaluation of the Research and Professional Activities of the Institutes of the Czech Academy of Sciences for 2010–2014
RESULTS OF THE PHASE I. AND BIBLIOMETRIC PARAMETERS

Institute: Institute of Molecular Genetics of the CAS, v. v. i.

Team: Laboratory of Molecular Virology

Head: RNDr. Jarmila Králová, CSc.

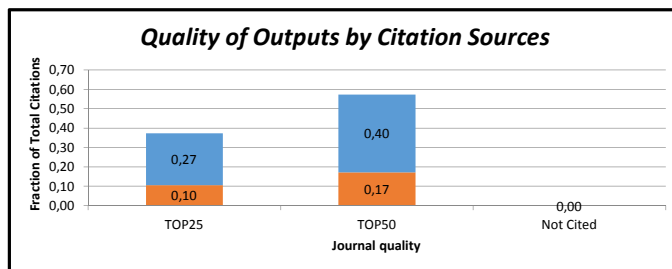
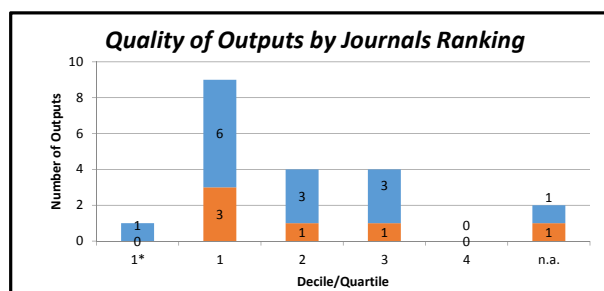
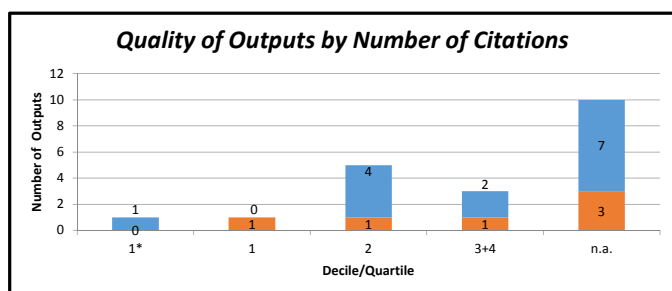
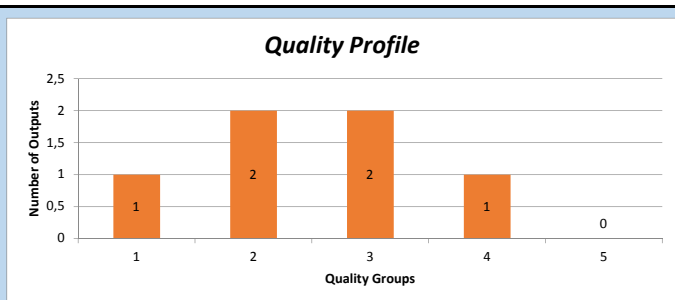
Total number of outputs : 27 **Evaluated outputs :** 7 (1) **Outputs for bibliometry :** 20 **Large collaborations outputs:** 0

Quality Groups of Outputs (Results of the Phase I.)

| | | | | | |
|---------|---|---|---|---|---|
| Quality | 1 | 2 | 3 | 4 | 5 |
| Outputs | 1 | 2 | 2 | 1 | 0 |

Quality Groups:

- (1): Quality that is **world-leading** in terms of originality, significance and rigour.
- (2): Quality that is **internationally excellent** in terms of originality, significance and rigour but which falls short of the highest standards of excellence.
- (3): Quality that is **recognized internationally** in terms of originality, significance and rigour.
- (4): Quality that is **recognized nationally** in terms of originality, significance and rigour.
- (5): Quality that falls **below the standard** of nationally recognized work. Or work which does not meet the published definition of research for the purposes of this assessment.



| Field Structure of Outputs | Outputs |
|--------------------------------------|---------|
| GENETICS & HEREDITY | 3 |
| CHEMISTRY, MEDICINAL | 2 |
| MULTIDISCIPLINARY SCIENCES | 2 |
| CHEMISTRY, ORGANIC | 2 |
| CELL BIOLOGY | 2 |
| ONCOLOGY | 2 |
| BIOTECHNOLOGY & APPLIED MICROBIOLOGY | 1 |
| BIOCHEMISTRY & MOLECULAR BIOLOGY | 1 |
| MATERIALS SCIENCE, TEXTILES | 1 |
| BIOLOGY | 1 |
| CHEMISTRY, MULTIDISCIPLINARY | 1 |
| BIOCHEMICAL RESEARCH METHODS | 1 |
| CHEMISTRY, ANALYTICAL | 1 |

Total number of outputs: selected types of outputs published in 2010-2014 and registered in the institutional research information system: journal article, monograph, monograph chapter, proceedings paper, patent, utility model, industrial design, prototype, functional specimen, norms and directives, specialized map, realized certified methodology, software, pilot plant, verified technology, plant breed/variety.

Evaluated outputs: outputs submitted by the team and evaluated in the Phase I (value in the brackets shows number of outputs submitted by the team but not evaluated in the Phase I).

Outputs for bibliometry: publications in 2010-2014 with less than 30 authors registered in the Web of Science; document type: article, review or proceedings paper.

Large collaborations outputs: publications in 2010-2014 with more than 30 authors registered in the Web of Science; document type: article, review or proceedings paper.

Quality Profile: number of evaluated outputs vs quality groups (5 groups); 'world-leading' quality denotes an absolute standard of quality in each field and subfield; 'world leading', 'internationally' and 'nationally' in this context refer to quality standards; they do not refer to the nature or geographical scope of particular subjects, nor to the focus of research nor its place of dissemination; for example, research which is focused on the subject specific to the Czech Republic might be of 'world leading' standard, on the contrary, work with an international focus might not be of 'world leading, internationally excellent or internationally recognized' standard.

Quality of Outputs by Journals Ranking: number of outputs in top decile (1*) and quartiles (1-4) by AIS of journals; n. a. - outputs in journals without AIS; if the output is assigned to more than one field, the mean value of quartile is taken (values from 0,1 to 0,5 rounded down); orange: outputs submitted by the team to the Evaluation, blue: other outputs by the team.

Quality of Outputs by Number of Citations: number of outputs in the top decile (1*) and in quartiles (1, 2, 3+4) of the list of outputs ordered by the number of citations; n. a. - the number of outputs in the field is low and/or the number of citations is not sufficient for relevant judgement; if the output is assigned to more than one field, the mean value of quartile is taken (values from 0,1 to 0,5 rounded down); orange: outputs submitted by the team to the Evaluation, blue: other outputs by the team.

Quality of Outputs by Citation Sources: fraction of citations of all outputs in the top quartile (TOP25) or the top half (TOP50) of list of journals ordered by AIS; fraction of "not cited" outputs is added; orange: outputs submitted by the team to the Evaluation, blue: other outputs by the team.

Field Structure of Outputs: number of outputs of the team in different fields; if the output is assigned to more than one field, the field where the publication performs best (assessed by Quality of Outputs by Journals Ranking) is taken; the table shows up to 30 fields.

**Evaluation of the Research and Professional Activities of the Institutes of the Czech Academy of Sciences for 2010–2014
RESULTS OF THE PHASE I. AND BIBLIOMETRIC PARAMETERS**

Institute: Institute of Molecular Genetics of the CAS, v. v. i.

Team: Laboratory of Cancer Cell Biology

Head: MUDr. Libor Macůrek, PhD.

Total number of outputs : 15 **Evaluated outputs :** 3 (0) **Outputs for bibliometry :** 13 **Large collaborations outputs:** 0

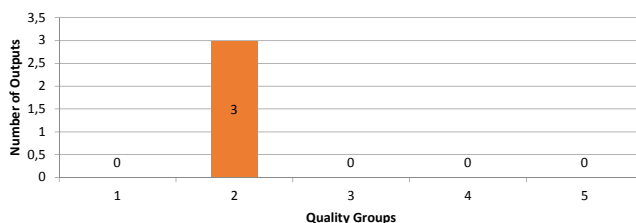
Quality Groups of Outputs (Results of the Phase I.)

| | | | | | |
|---------|---|---|---|---|---|
| Quality | 1 | 2 | 3 | 4 | 5 |
| Outputs | 0 | 3 | 0 | 0 | 0 |

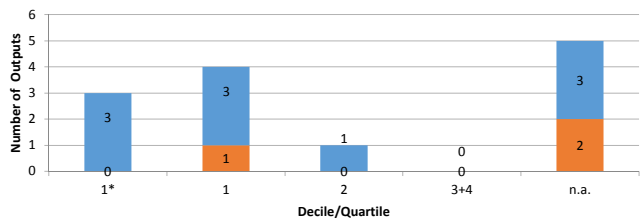
Quality Groups:

- (1): Quality that is **world-leading** in terms of originality, significance and rigour.
- (2): Quality that is **internationally excellent** in terms of originality, significance and rigour but which falls short of the highest standards of excellence.
- (3): Quality that is **recognized internationally** in terms of originality, significance and rigour.
- (4): Quality that is **recognized nationally** in terms of originality, significance and rigour.
- (5): Quality that falls **below the standard** of nationally recognized work. Or work which does not meet the published definition of research for the purposes of this assessment.

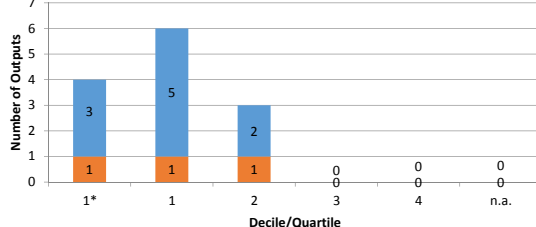
Quality Profile



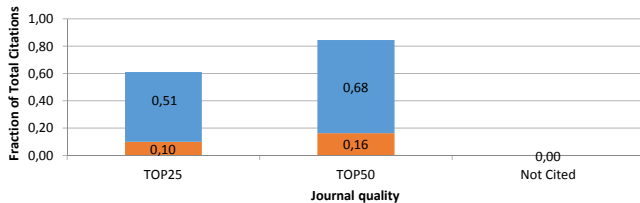
Quality of Outputs by Number of Citations



Quality of Outputs by Journals Ranking



Quality of Outputs by Citation Sources



Field Structure of Outputs

| Field | Outputs |
|----------------------------------|---------|
| BIOCHEMISTRY & MOLECULAR BIOLOGY | 5 |
| CELL BIOLOGY | 5 |
| ONCOLOGY | 2 |
| GENETICS & HEREDITY | 1 |

Total number of outputs: selected types of outputs published in 2010-2014 and registered in the institutional research information system: journal article, monograph, monograph chapter, proceedings paper, patent, utility model, industrial design, prototype, functional specimen, norms and directives, specialized map, realized certified methodology, software, pilot plant, verified technology, plant breed/variety.

Evaluated outputs: outputs submitted by the team and evaluated in the Phase I (value in the brackets shows number of outputs submitted by the team but not evaluated in the Phase I).

Outputs for bibliometry: publications in 2010-2014 with less than 30 authors registered in the Web of Science; document type: article, review or proceedings paper.

Large collaborations outputs: publications in 2010-2014 with more than 30 authors registered in the Web of Science; document type: article, review or proceedings paper.

Quality Profile: number of evaluated outputs vs quality groups (5 groups); 'world-leading' quality denotes an absolute standard of quality in each field and subfield; 'world leading', 'internationally' and 'nationally' in this context refer to quality standards; they do not refer to the nature or geographical scope of particular subjects, nor to the focus of research nor its place of dissemination; for example, research which is focused on the subject specific to the Czech Republic might be of 'world leading' standard, on the contrary, work with an international focus might not be of 'world leading, internationally excellent or internationally recognized' standard.

Quality of Outputs by Journals Ranking: number of outputs in top decile (1*) and quartiles (1-4) by AIS of journals; n. a. - outputs in journals without AIS; if the output is assigned to more than one field, the mean value of quartile is taken (values from 0,1 to 0,5 rounded down); orange: outputs submitted by the team to the Evaluation, blue: other outputs by the team.

Quality of Outputs by Number of Citations: number of outputs in the top decile (1*) and in quartiles (1, 2, 3+4) of the list of outputs ordered by the number of citations; n. a. - the number of outputs in the field is low and/or the number of citations is not sufficient for relevant judgement; if the output is assigned to more than one field, the mean value of quartile is taken (values from 0,1 to 0,5 rounded down); orange: outputs submitted by the team to the Evaluation, blue: other outputs by the team.

Quality of Outputs by Citation Sources: fraction of citations of all outputs in the top quartile (TOP25) or the top half (TOP50) of list of journals ordered by AIS; fraction of "not cited" outputs is added; orange: outputs submitted by the team to the Evaluation, blue: other outputs by the team.

Field Structure of Outputs: number of outputs of the team in different fields; if the output is assigned to more than one field, the field where the publication performs best (assessed by Quality of Outputs by Journals Ranking) is taken; the table shows up to 30 fields.

Evaluation of the Research and Professional Activities of the Institutes of the Czech Academy of Sciences for 2010–2014
RESULTS OF THE PHASE I. AND BIBLIOMETRIC PARAMETERS

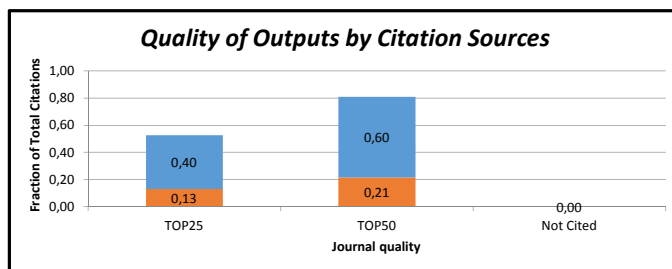
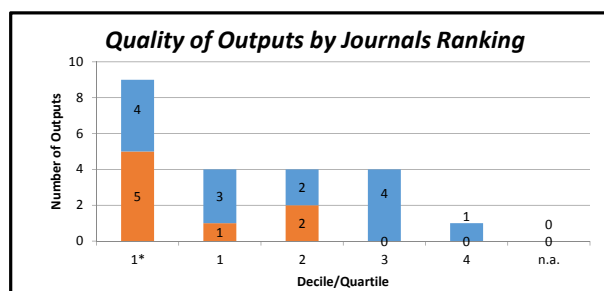
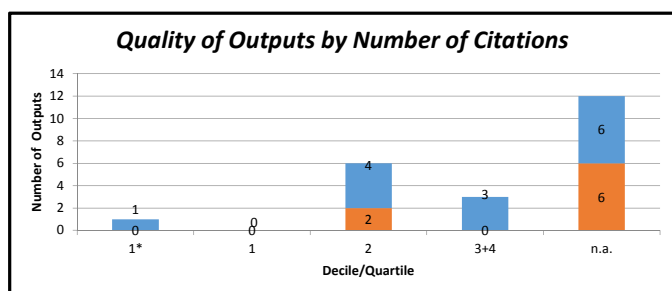
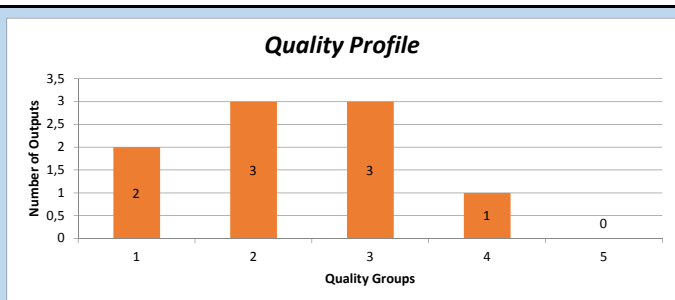
Institute: Institute of Molecular Genetics of the CAS, v. v. i.
Team: Laboratory of Cell Differentiation
Head: RNDr. Petr Bartůněk, CSc.
Total number of outputs : 40 **Evaluated outputs :** 9 (0) **Outputs for bibliometry :** 22 **Large collaborations outputs:** 0

Quality Groups of Outputs (Results of the Phase I.)

| | | | | | |
|---------|---|---|---|---|---|
| Quality | 1 | 2 | 3 | 4 | 5 |
| Outputs | 2 | 3 | 3 | 1 | 0 |

Quality Groups:

- (1): Quality that is **world-leading** in terms of originality, significance and rigour.
- (2): Quality that is **internationally excellent** in terms of originality, significance and rigour but which falls short of the highest standards of excellence.
- (3): Quality that is **recognized internationally** in terms of originality, significance and rigour.
- (4): Quality that is **recognized nationally** in terms of originality, significance and rigour.
- (5): Quality that falls **below the standard** of nationally recognized work. Or work which does not meet the published definition of research for the purposes of this assessment.



| Field Structure of Outputs | Outputs |
|---------------------------------------|---------|
| BIOCHEMISTRY & MOLECULAR BIOLOGY | 3 |
| CHEMISTRY, MEDICINAL | 3 |
| HEMATOLOGY | 3 |
| COMPUTER SCIENCE, INFORMATION SYSTEMS | 2 |
| ONCOLOGY | 2 |
| GENETICS & HEREDITY | 1 |
| BIOTECHNOLOGY & APPLIED MICROBIOLOGY | 1 |
| CHEMISTRY, INORGANIC & NUCLEAR | 1 |
| BIOPHYSICS | 1 |
| CHEMISTRY, MULTIDISCIPLINARY | 1 |
| MULTIDISCIPLINARY SCIENCES | 1 |
| CELL BIOLOGY | 1 |
| CHEMISTRY, ANALYTICAL | 1 |
| CHEMISTRY, APPLIED | 1 |

Total number of outputs: selected types of outputs published in 2010-2014 and registered in the institutional research information system: journal article, monograph, monograph chapter, proceedings paper, patent, utility model, industrial design, prototype, functional specimen, norms and directives, specialized map, realized certified methodology, software, pilot plant, verified technology, plant breed/variety.

Evaluated outputs: outputs submitted by the team and evaluated in the Phase I (value in the brackets shows number of outputs submitted by the team but not evaluated in the Phase I).

Outputs for bibliometry: publications in 2010-2014 with less than 30 authors registered in the Web of Science; document type: article, review or proceedings paper.

Large collaborations outputs: publications in 2010-2014 with more than 30 authors registered in the Web of Science; document type: article, review or proceedings paper.

Quality Profile: number of evaluated outputs vs quality groups (5 groups); 'world-leading' quality denotes an absolute standard of quality in each field and subfield; 'world leading', 'internationally' and 'nationally' in this context refer to quality standards; they do not refer to the nature or geographical scope of particular subjects, nor to the focus of research nor its place of dissemination; for example, research which is focused on the subject specific to the Czech Republic might be of 'world leading' standard, on the contrary, work with an international focus might not be of 'world leading, internationally excellent or internationally recognized' standard.

Quality of Outputs by Journals Ranking: number of outputs in top decile (1*) and quartiles (1-4) by AIS of journals; n. a. - outputs in journals without AIS; if the output is assigned to more than one field, the mean value of quartile is taken (values from 0,1 to 0,5 rounded down); orange: outputs submitted by the team to the Evaluation, blue: other outputs by the team.

Quality of Outputs by Number of Citations: number of outputs in the top decile (1*) and in quartiles (1, 2, 3+4) of the list of outputs ordered by the number of citations; n. a. - the number of outputs in the field is low and/or the number of citations is not sufficient for relevant judgement; if the output is assigned to more than one field, the mean value of quartile is taken (values from 0,1 to 0,5 rounded down); orange: outputs submitted by the team to the Evaluation, blue: other outputs by the team.

Quality of Outputs by Citation Sources: fraction of citations of all outputs in the top quartile (TOP25) or the top half (TOP50) of list of journals ordered by AIS; fraction of "not cited" outputs is added; orange: outputs submitted by the team to the Evaluation, blue: other outputs by the team.

Field Structure of Outputs: number of outputs of the team in different fields; if the output is assigned to more than one field, the field where the publication performs best (assessed by Quality of Outputs by Journals Ranking) is taken; the table shows up to 30 fields.

Evaluation of the Research and Professional Activities of the Institutes of the Czech Academy of Sciences for 2010–2014
RESULTS OF THE PHASE I. AND BIBLIOMETRIC PARAMETERS

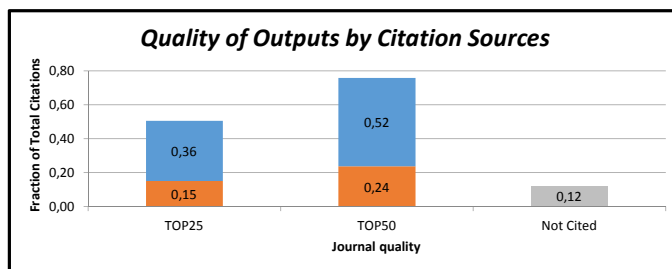
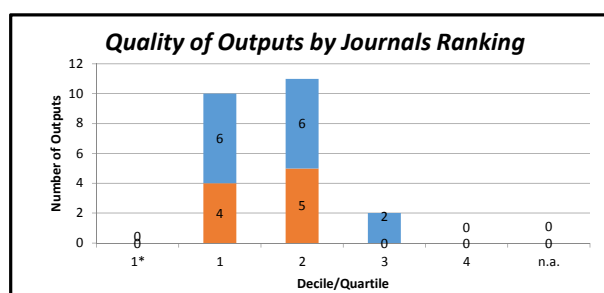
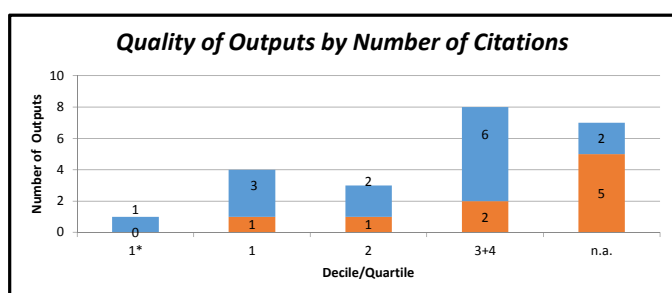
Institute: Institute of Molecular Genetics of the CAS, v. v. i.
Team: Laboratory of Biology of the Cell Nucleus
Head: Prof. RNDr. Pavel Hozák, DrSc.
Total number of outputs : 91 **Evaluated outputs :** 10 (1) **Outputs for bibliometry :** 23 **Large collaborations outputs:** 0

Quality Groups of Outputs (Results of the Phase I.)

| | | | | | |
|---------|---|---|---|---|---|
| Quality | 1 | 2 | 3 | 4 | 5 |
| Outputs | 1 | 1 | 6 | 1 | 0 |

Quality Groups:

- (1): Quality that is **world-leading** in terms of originality, significance and rigour.
- (2): Quality that is **internationally excellent** in terms of originality, significance and rigour but which falls short of the highest standards of excellence.
- (3): Quality that is **recognized internationally** in terms of originality, significance and rigour.
- (4): Quality that is **recognized nationally** in terms of originality, significance and rigour.
- (5): Quality that falls **below the standard** of nationally recognized work. Or work which does not meet the published definition of research for the purposes of this assessment.



| Field Structure of Outputs | Outputs |
|--------------------------------------|---------|
| MICROSCOPY | 7 |
| CELL BIOLOGY | 4 |
| BIOCHEMISTRY & MOLECULAR BIOLOGY | 2 |
| MULTIDISCIPLINARY SCIENCES | 2 |
| ONCOLOGY | 1 |
| MATERIALS SCIENCE, MULTIDISCIPLINARY | 1 |
| PHYSIOLOGY | 1 |
| DEVELOPMENTAL BIOLOGY | 1 |
| OTORHINOLARYNGOLOGY | 1 |
| ENDOCRINOLOGY & METABOLISM | 1 |
| BIOCHEMICAL RESEARCH METHODS | 1 |
| CHEMISTRY, PHYSICAL | 1 |

Total number of outputs: selected types of outputs published in 2010-2014 and registered in the institutional research information system: journal article, monograph, monograph chapter, proceedings paper, patent, utility model, industrial design, prototype, functional specimen, norms and directives, specialized map, realized certified methodology, software, pilot plant, verified technology, plant breed/variety.

Evaluated outputs: outputs submitted by the team and evaluated in the Phase I (value in the brackets shows number of outputs submitted by the team but not evaluated in the Phase I).

Outputs for bibliometry: publications in 2010-2014 with less than 30 authors registered in the Web of Science; document type: article, review or proceedings paper.

Large collaborations outputs: publications in 2010-2014 with more than 30 authors registered in the Web of Science; document type: article, review or proceedings paper.

Quality Profile: number of evaluated outputs vs quality groups (5 groups); ‘world-leading’ quality denotes an absolute standard of quality in each field and subfield; ‘world leading’, ‘internationally’ and ‘nationally’ in this context refer to quality standards; they do not refer to the nature or geographical scope of particular subjects, nor to the focus of research nor its place of dissemination; for example, research which is focused on the subject specific to the Czech Republic might be of ‘world leading’ standard, on the contrary, work with an international focus might not be of ‘world leading, internationally excellent or internationally recognized’ standard.

Quality of Outputs by Journals Ranking: number of outputs in top decile (1*) and quartiles (1-4) by AIS of journals; n. a. - outputs in journals without AIS; if the output is assigned to more than one field, the mean value of quartile is taken (values from 0,1 to 0,5 rounded down); orange: outputs submitted by the team to the Evaluation, blue: other outputs by the team.

Quality of Outputs by Number of Citations: number of outputs in the top decile (1*) and in quartiles (1, 2, 3+4) of the list of outputs ordered by the number of citations; n. a. - the number of outputs in the field is low and/or the number of citations is not sufficient for relevant judgement; if the output is assigned to more than one field, the mean value of quartile is taken (values from 0,1 to 0,5 rounded down); orange: outputs submitted by the team to the Evaluation, blue: other outputs by the team.

Quality of Outputs by Citation Sources: fraction of citations of all outputs in the top quartile (TOP25) or the top half (TOP50) of list of journals ordered by AIS; fraction of “not cited” outputs is added; orange: outputs submitted by the team to the Evaluation, blue: other outputs by the team.

Field Structure of Outputs: number of outputs of the team in different fields; if the output is assigned to more than one field, the field where the publication performs best (assessed by Quality of Outputs by Journals Ranking) is taken; the table shows up to 30 fields.

Evaluation of the Research and Professional Activities of the Institutes of the Czech Academy of Sciences for 2010–2014
RESULTS OF THE PHASE I. AND BIBLIOMETRIC PARAMETERS

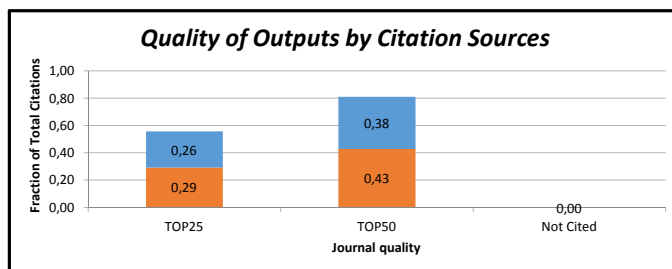
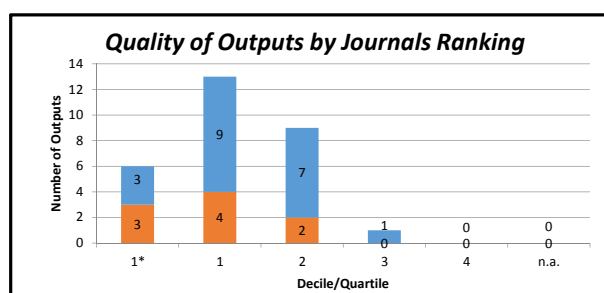
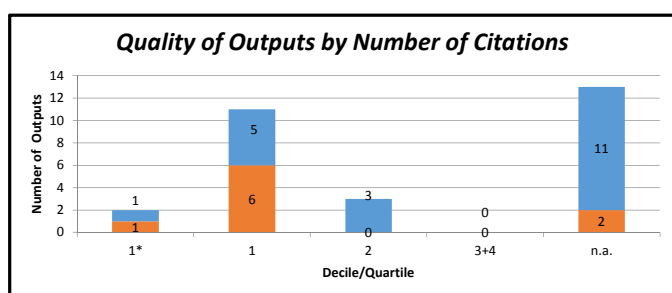
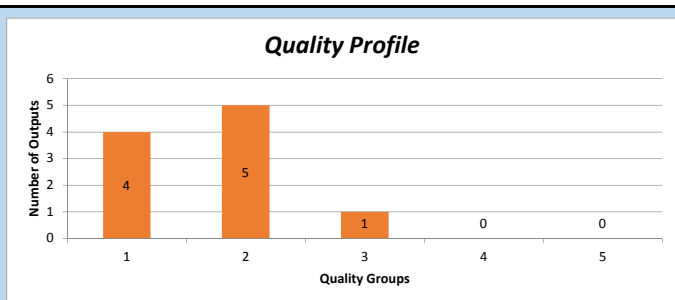
Institute: Institute of Molecular Genetics of the CAS, v. v. i.
Team: Laboratory of Genome Integrity
Head: Prof. MUDr. Jiří Bartek, DrSc.
Total number of outputs : 41 **Evaluated outputs :** 10 (0) **Outputs for bibliometry :** 29 **Large collaborations outputs:** 0

Quality Groups of Outputs (Results of the Phase I.)

| | | | | | |
|---------|---|---|---|---|---|
| Quality | 1 | 2 | 3 | 4 | 5 |
| Outputs | 4 | 5 | 1 | 0 | 0 |

Quality Groups:

- (1): Quality that is **world-leading** in terms of originality, significance and rigour.
- (2): Quality that is **internationally excellent** in terms of originality, significance and rigour but which falls short of the highest standards of excellence.
- (3): Quality that is **recognized internationally** in terms of originality, significance and rigour.
- (4): Quality that is **recognized nationally** in terms of originality, significance and rigour.
- (5): Quality that falls **below the standard** of nationally recognized work. Or work which does not meet the published definition of research for the purposes of this assessment.



| Field Structure of Outputs | Outputs |
|----------------------------------|---------|
| BIOCHEMISTRY & MOLECULAR BIOLOGY | 10 |
| CELL BIOLOGY | 8 |
| MULTIDISCIPLINARY SCIENCES | 2 |
| IMMUNOLOGY | 2 |
| CHEMISTRY, MEDICAL | 1 |
| REPRODUCTIVE BIOLOGY | 1 |
| ONCOLOGY | 1 |
| ANDROLOGY | 1 |
| TROPICAL MEDICINE | 1 |
| MICROSCOPY | 1 |
| HEMATOLOGY | 1 |

Total number of outputs: selected types of outputs published in 2010-2014 and registered in the institutional research information system: journal article, monograph, monograph chapter, proceedings paper, patent, utility model, industrial design, prototype, functional specimen, norms and directives, specialized map, realized certified methodology, software, pilot plant, verified technology, plant breed/variety.

Evaluated outputs: outputs submitted by the team and evaluated in the Phase I (value in the brackets shows number of outputs submitted by the team but not evaluated in the Phase I).

Outputs for bibliometry: publications in 2010-2014 with less than 30 authors registered in the Web of Science; document type: article, review or proceedings paper.

Large collaborations outputs: publications in 2010-2014 with more than 30 authors registered in the Web of Science; document type: article, review or proceedings paper.

Quality Profile: number of evaluated outputs vs quality groups (5 groups); ‘world-leading’ quality denotes an absolute standard of quality in each field and subfield; ‘world leading’, ‘internationally’ and ‘nationally’ in this context refer to quality standards; they do not refer to the nature or geographical scope of particular subjects, nor to the focus of research nor its place of dissemination; for example, research which is focused on the subject specific to the Czech Republic might be of ‘world leading’ standard, on the contrary, work with an international focus might not be of ‘world leading, internationally excellent or internationally recognized’ standard.

Quality of Outputs by Journals Ranking: number of outputs in top decile (1*) and quartiles (1-4) by AIS of journals; n. a. - outputs in journals without AIS; if the output is assigned to more than one field, the mean value of quartile is taken (values from 0,1 to 0,5 rounded down); orange: outputs submitted by the team to the Evaluation, blue: other outputs by the team.

Quality of Outputs by Number of Citations: number of outputs in the top decile (1*) and in quartiles (1, 2, 3+4) of the list of outputs ordered by the number of citations; n. a. - the number of outputs in the field is low and/or the number of citations is not sufficient for relevant judgement; if the output is assigned to more than one field, the mean value of quartile is taken (values from 0,1 to 0,5 rounded down); orange: outputs submitted by the team to the Evaluation, blue: other outputs by the team.

Quality of Outputs by Citation Sources: fraction of citations of all outputs in the top quartile (TOP25) or the top half (TOP50) of list of journals ordered by AIS; fraction of “not cited” outputs is added; orange: outputs submitted by the team to the Evaluation, blue: other outputs by the team.

Field Structure of Outputs: number of outputs of the team in different fields; if the output is assigned to more than one field, the field where the publication performs best (assessed by Quality of Outputs by Journals Ranking) is taken; the table shows up to 30 fields.

Evaluation of the Research and Professional Activities of the Institutes of the Czech Academy of Sciences for 2010–2014
RESULTS OF THE PHASE I. AND BIBLIOMETRIC PARAMETERS

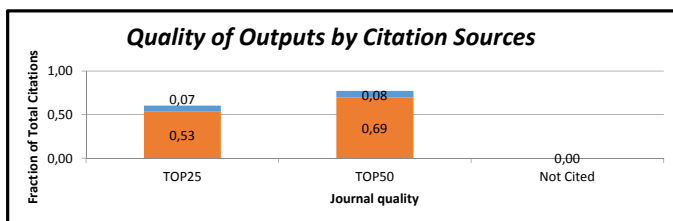
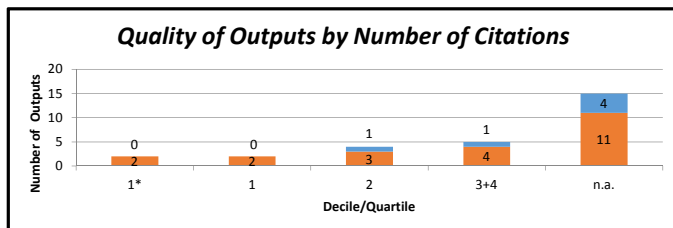
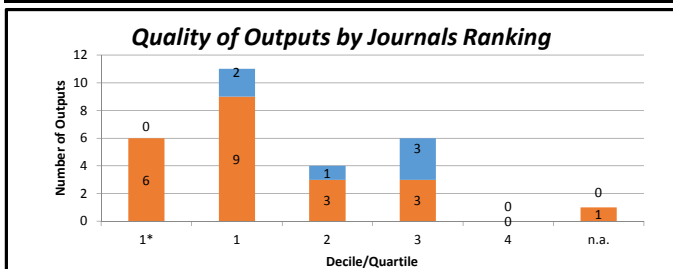
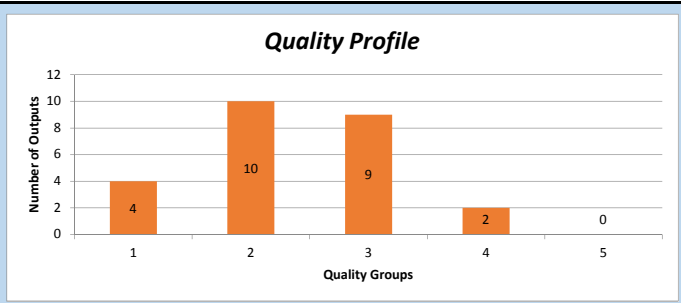
Institute: Institute of Molecular Genetics of the CAS, v. v. i.
Team: Laboratory of Transgenic Models of Diseases
Head: Doc. Radislav Sedláček, PhD.
Total number of outputs : 33 **Evaluated outputs :** 25 (0) **Outputs for bibliometry :** 28 **Large collaborations outputs:** 0

Quality Groups of Outputs (Results of the Phase I.)

| | | | | | |
|---------|---|----|---|---|---|
| Quality | 1 | 2 | 3 | 4 | 5 |
| Outputs | 4 | 10 | 9 | 2 | 0 |

Quality Groups:

- (1): Quality that is **world-leading** in terms of originality, significance and rigour.
- (2): Quality that is **internationally excellent** in terms of originality, significance and rigour but which falls short of the highest standards of excellence.
- (3): Quality that is **recognized internationally** in terms of originality, significance and rigour.
- (4): Quality that is **recognized nationally** in terms of originality, significance and rigour.
- (5): Quality that falls **below the standard** of nationally recognized work. Or work which does not meet the published definition of research for the purposes of this assessment.



Field Structure of Outputs

| Field Structure of Outputs | Outputs |
|-----------------------------------|---------|
| BIOCHEMISTRY & MOLECULAR BIOLOGY | 5 |
| MULTIDISCIPLINARY SCIENCES | 3 |
| DERMATOLOGY | 2 |
| GENETICS & HEREDITY | 2 |
| BIOLOGY | 2 |
| GASTROENTEROLOGY & HEPATOLOGY | 2 |
| ONCOLOGY | 1 |
| VETERINARY SCIENCES | 1 |
| PLANT SCIENCES | 1 |
| DEVELOPMENTAL BIOLOGY | 1 |
| CLINICAL NEUROLOGY | 1 |
| BIOCHEMICAL RESEARCH METHODS | 1 |
| PATHOLOGY | 1 |
| CELL BIOLOGY | 1 |
| REPRODUCTIVE BIOLOGY | 1 |
| HEMATOLOGY | 1 |
| BIOPHYSICS | 1 |
| MEDICINE, RESEARCH & EXPERIMENTAL | 1 |

Total number of outputs: selected types of outputs published in 2010-2014 and registered in the institutional research information system: journal article, monograph, monograph chapter, proceedings paper, patent, utility model, industrial design, prototype, functional specimen, norms and directives, specialized map, realized certified methodology, software, pilot plant, verified technology, plant breed/variety.

Evaluated outputs: outputs submitted by the team and evaluated in the Phase I (value in the brackets shows number of outputs submitted by the team but not evaluated in the Phase I).

Outputs for bibliometry: publications in 2010-2014 with less than 30 authors registered in the Web of Science; document type: article, review or proceedings paper.

Large collaborations outputs: publications in 2010-2014 with more than 30 authors registered in the Web of Science; document type: article, review or proceedings paper.

Quality Profile: number of evaluated outputs vs quality groups (5 groups); ‘world-leading’ quality denotes an absolute standard of quality in each field and subfield; ‘world leading’, ‘internationally’ and ‘nationally’ in this context refer to quality standards; they do not refer to the nature or geographical scope of particular subjects, nor to the focus of research nor its place of dissemination; for example, research which is focused on the subject specific to the Czech Republic might be of ‘world leading’ standard, on the contrary, work with an international focus might not be of ‘world leading, internationally excellent or internationally recognized’ standard.

Quality of Outputs by Journals Ranking: number of outputs in top decile (1*) and quartiles (1-4) by AIS of journals; n. a. - outputs in journals without AIS; if the output is assigned to more than one field, the mean value of quartile is taken (values from 0,1 to 0,5 rounded down); orange: outputs submitted by the team to the Evaluation, blue: other outputs by the team.

Quality of Outputs by Number of Citations: number of outputs in the top decile (1*) and in quartiles (1, 2, 3+4) of the list of outputs ordered by the number of citations; n. a. - the number of outputs in the field is low and/or the number of citations is not sufficient for relevant judgement; if the output is assigned to more than one field, the mean value of quartile is taken (values from 0,1 to 0,5 rounded down); orange: outputs submitted by the team to the Evaluation, blue: other outputs by the team.

Quality of Outputs by Citation Sources: fraction of citations of all outputs in the top quartile (TOP25) or the top half (TOP50) of list of journals ordered by AIS; fraction of “not cited” outputs is added; orange: outputs submitted by the team to the Evaluation, blue: other outputs by the team.

Field Structure of Outputs: number of outputs of the team in different fields; if the output is assigned to more than one field, the field where the publication performs best (assessed by Quality of Outputs by Journals Ranking) is taken; the table shows up to 30 fields.