

Fig. 2S. Ultrastructural observation of different organs surface in two winter wheat cultivars at 0 DAA under water deficit.

Pubing 143-CK

Pubing 143-MD

Zhengyin 1-CK

Zhengyin 1-MD

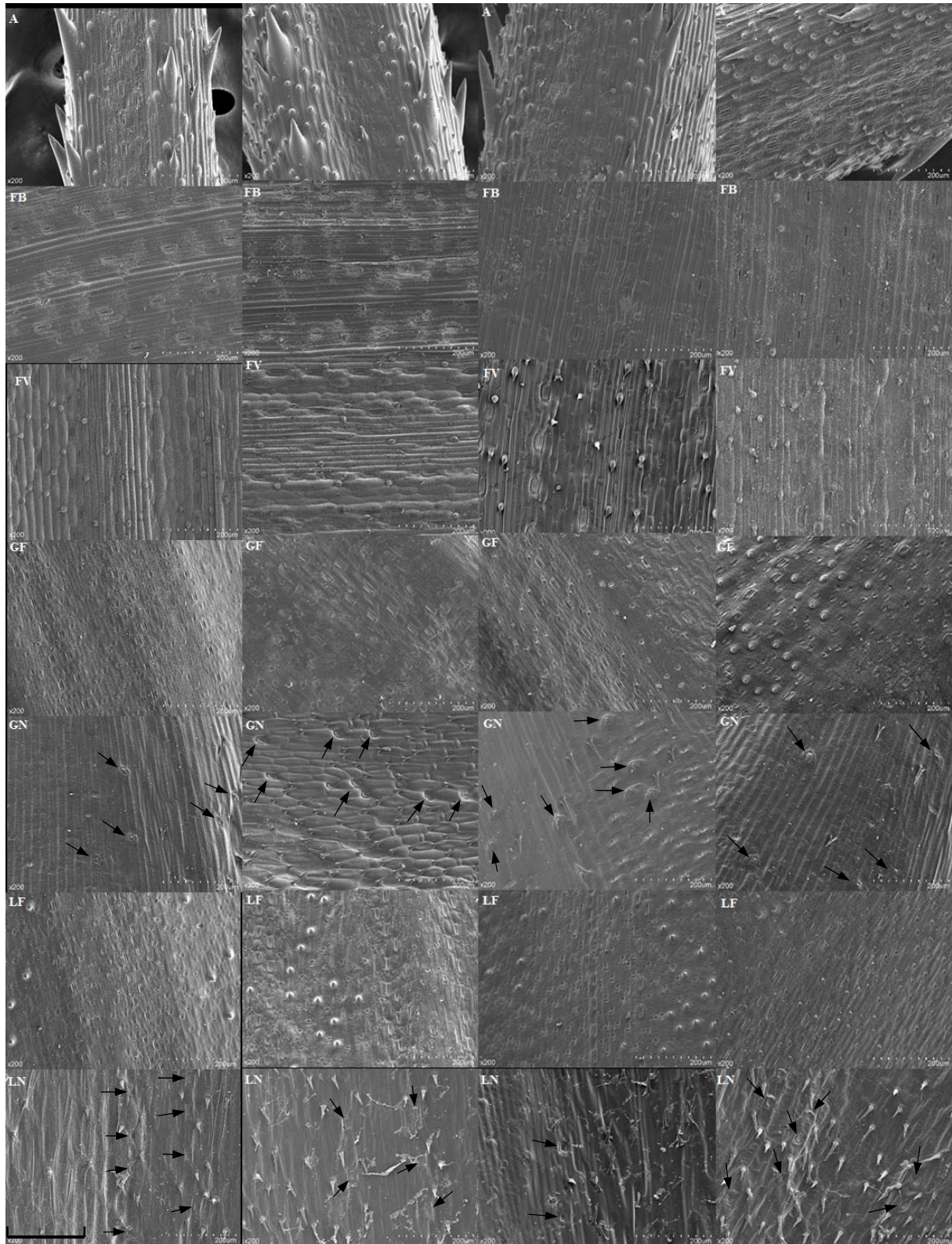


Fig. 3S. Ultrastructural observation of different organs surface in two winter wheat cultivars at 6 DAA under water deficit.

Pubing 143-CK

Pubing 143-MD

Zhengyin 1-CK

Zhengyin 1-MD

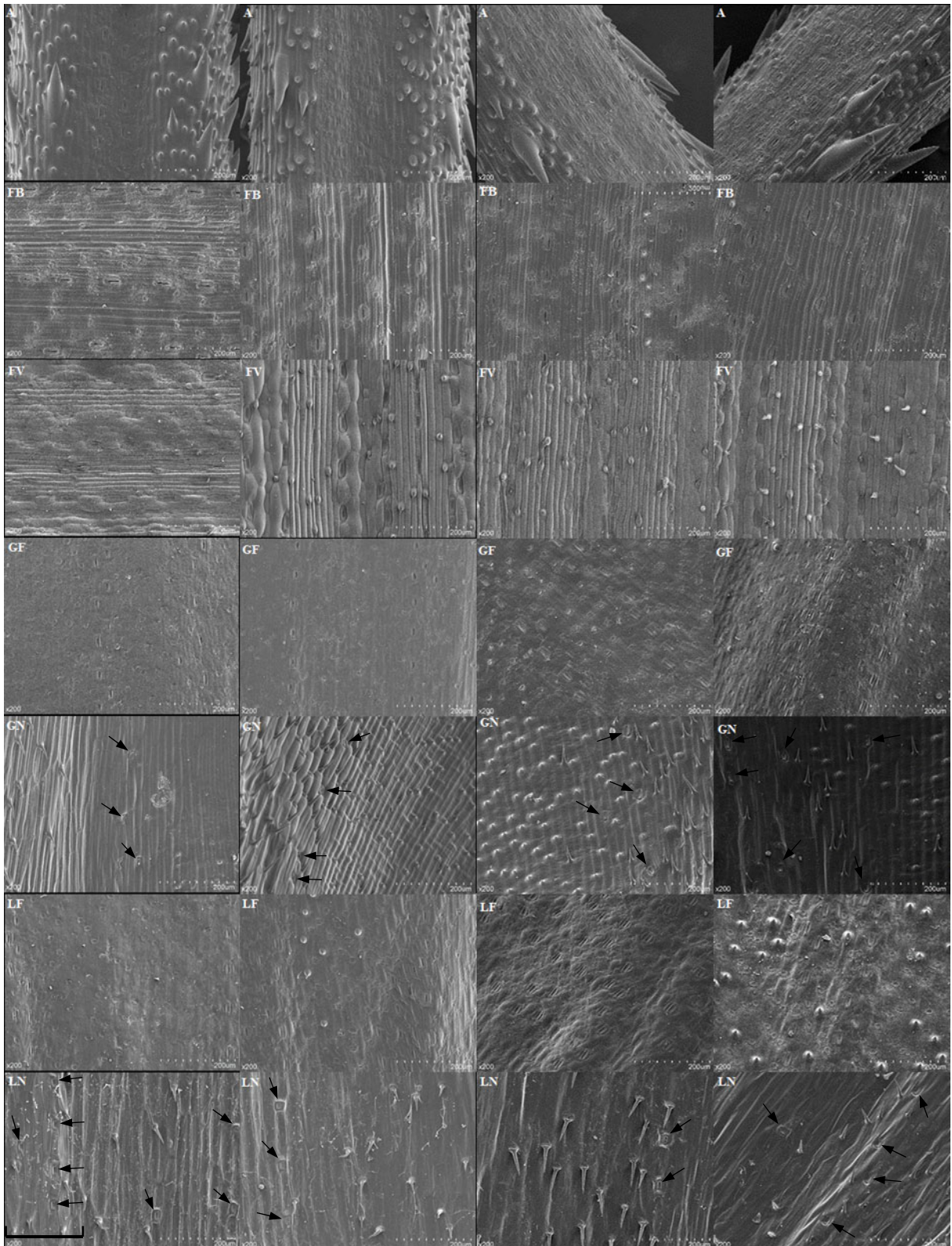


Fig. 4S. Ultrastructural observation of different organs surface in two winter wheat cultivars at 12 DAA under water deficit.

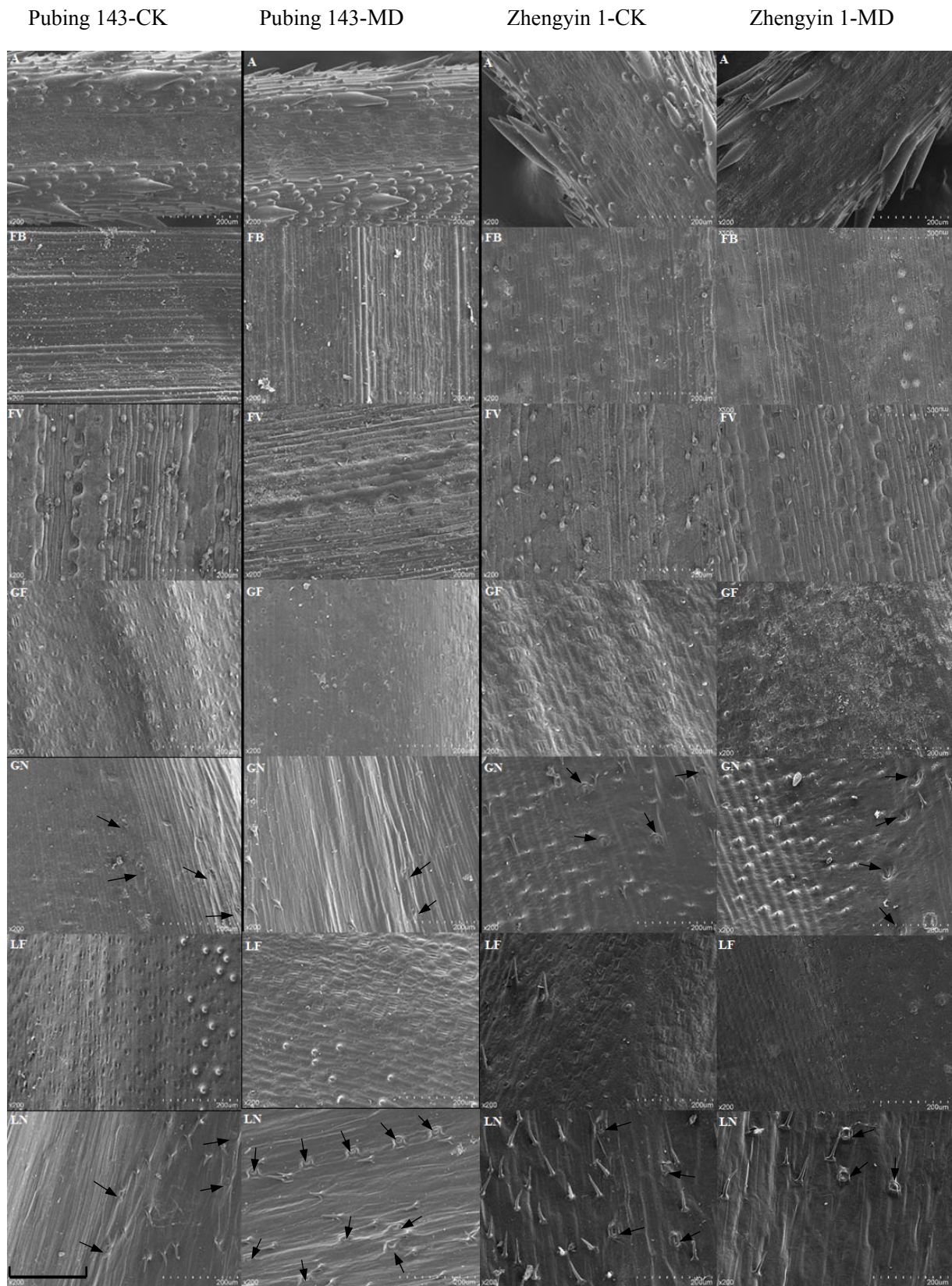
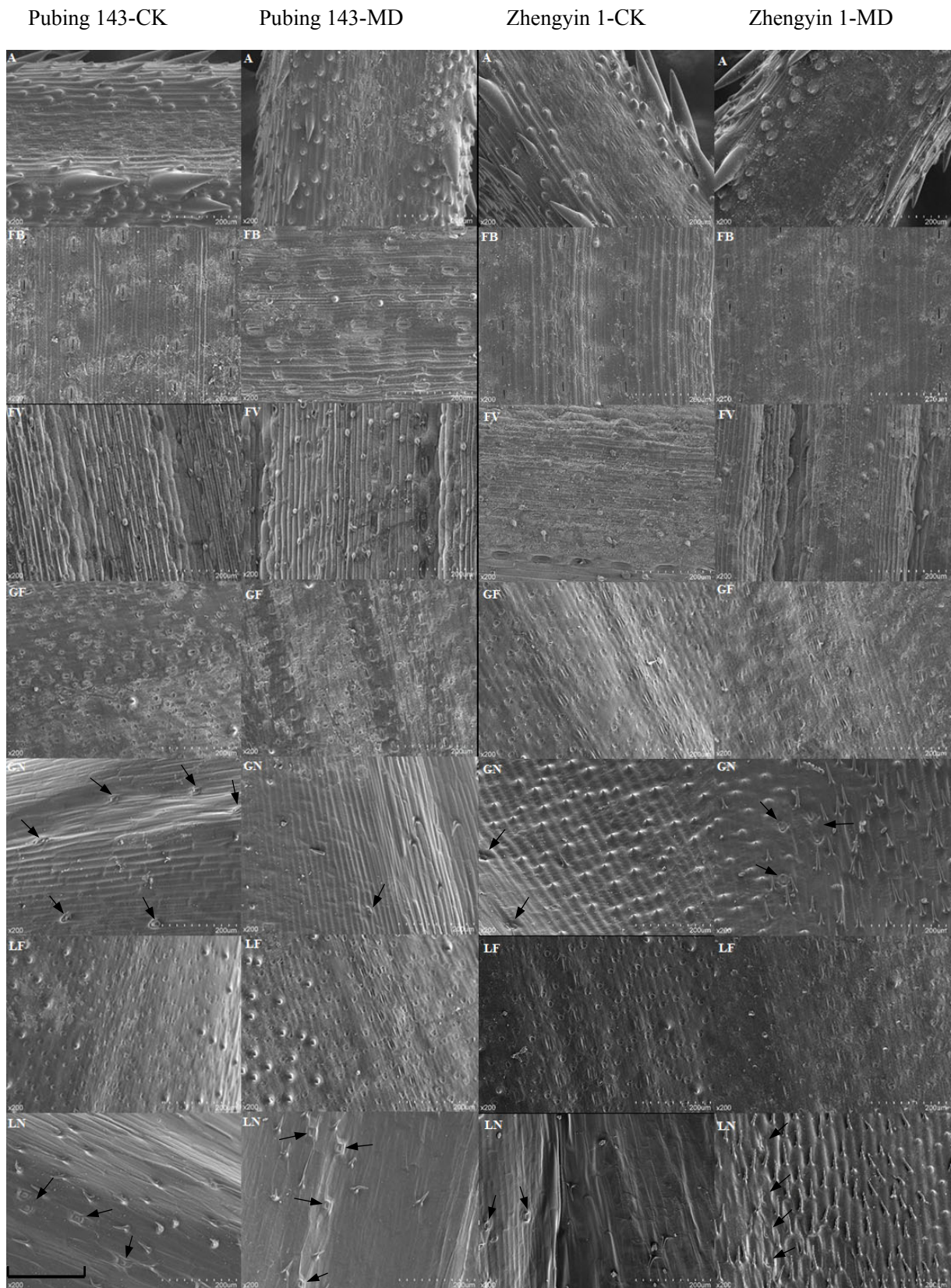


Fig. 5S. Ultrastructural observation of different organs surface in two winter wheat cultivars at 24 DAA under water deficit.



Notes: magnification times: $\times 200$; bar=200 μm ; CK – normal water supply condition; MD – moderate water deficit. FB = flag leaf back surface, FV = flag leaf ventral surface, A = awn, GF = glume abaxial side, GN= glume adaxial side, LF= lemma abaxial side, LN = lemma adaxial side. The black arrow used to mark stomata of inner bracts.