

JIŘÍ VEČERNÍK AND MARTINA MYSÍKOVÁ

IN COOPERATION WITH ŠÁRKA ŠANDOVÁ AND SIMONA MĚŘINSKÁ

POVERTY

IN THE CZECH REPUBLIC

A CRITICAL LOOK AT EU INDICATORS

2020 UPDATE OF TABLES AND FIGURES



Institute of Sociology
Czech Academy of Sciences

POVERTY

IN THE CZECH REPUBLIC

A Critical Look at EU Indicators

2020 Update of Tables and Figures

Jiří Večerník and Martina Mysíková

The Institute of Sociology of the Czech Academy of Sciences

In cooperation with Šárka Šandová and Simona Měřinská^{a)}

^{a)} Czech Statistical Office

The Institute of Sociology of the Czech Academy of Sciences

Prague, November 2020

ISBN 978-80-7330-373-0 (online)

Acknowledgement

This publication was supported by the Czech Science Foundation under Grant no. 18-07036S “Methodology and reality of poverty: Czech Republic in the European context”. The EU-SILC datasets were made available on the basis of contract no. 247/2019-EU-SILC-HBS between the European Commission, Eurostat, and the Institute of Sociology of the Czech Academy of Sciences. We applied the EU-SILC microdata version of 2020-03. The responsibility for all conclusions drawn from the data lies entirely with the authors.

Preface

In 2015 and 2016, we published a study entitled “POVERTY IN THE CZECH REPUBLIC. A Critical Look at EU Indicators”, first in Czech (2015) and later in English (2016). The study aimed to provide a critical look at the design of poverty indicators, considering the frequency of their use and their political significance.

Though we used various data sources, the main source was the representative statistical survey carried out under the supervision of Eurostat, the European Union Statistics on Income and Living Conditions (EU-SILC). Using it, we analysed sets of persons defined by the characteristics of their households and weighting adapted to the Czech population, or the populations of EU states.

The study was organized as follows: First we scrutinised EU poverty indicators, particularly evaluating whether there had been an underestimation of household incomes in surveys. Second, we compared poverty indicators with household reports on how sufficient their income was to cover household expenses. Third, we used longitudinal data from the EU-SILC survey to study the duration of poverty and specific EU-SILC modules on inter-generational transmission of disadvantages, considering how people perceive changes from their economic situation in their teen years in relation to their current adult status. Finally, we situated the data on the Czech Republic into the Central-European context and pointed to some gaps in our knowledge. The Appendix presents main poverty and related indicators for all “SILC” European countries.

In the original publication, our evidence ended in 2014. Because some shifts have occurred since this time, we have decided to update the Tables and Figures to 2018 (and 2019 where possible). We do not comment on the updated data, we simply offer it for the reader’s own consideration. The structure of the original publication is preserved, and the Tables and Figures maintain their original numbering and order.

The original version:

Večerník, J., Mysíková, M. (2016). *Poverty in the Czech Republic: A Critical look at EU Indicators*. Prague: Institute of Sociology of the Czech Academy of Sciences. ISBN 978-80-7330-290-0. www.soc.cas.cz/sites/default/files/publikace/vecernik_mysikova_-_poverty_in_czech_republic_0.pdf

The original version in Czech:

Večerník, J., Mysíková, M. (2015): *Chudoba v České republice. Kritický pohled na evropské ukazatele*. Prague: Institute of Sociology of the Czech Academy of Sciences. ISBN 978-80-7330-283-2. www.soc.cas.cz/sites/default/files/publikace/vecernik-mysikova-chudoba_v_ceske_republice-kriticky_pohled_na_evropske_ukazatele.pdf

Content

1. What do the “objective” indicators of poverty show?.....	5
2. How do “objective” indicators correspond to households’ declaration?.....	8
3. How long do people stay in poverty?.....	13
4. Poverty in the Czech Republic in cross-national comparison.....	17
Appendix: Comparative tables in European countries.....	22
Country abbreviations.....	34

List of tables

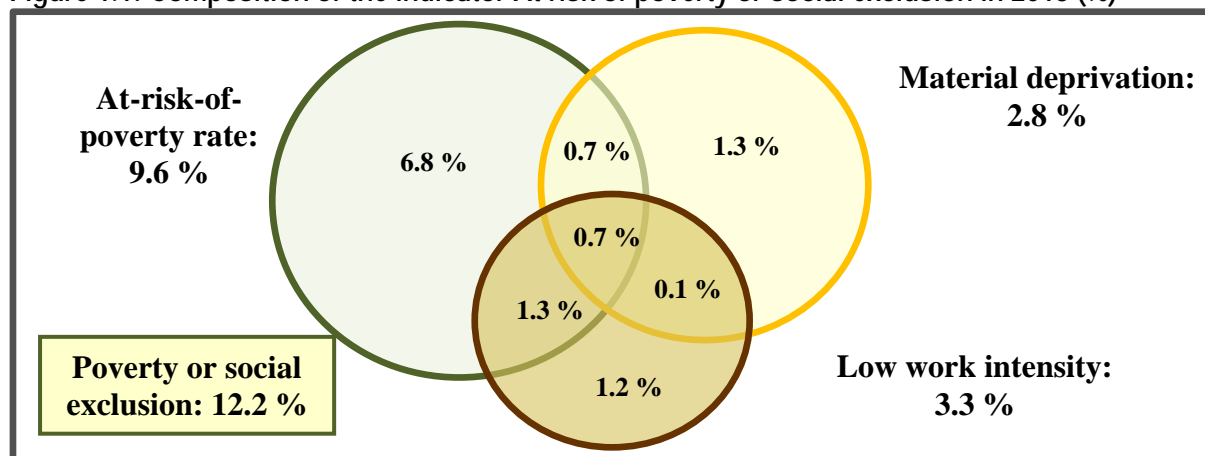
Table 1.1: Earnings of employees by company and household surveys (CZK monthly).....	5
Table 1.2: Pensions by statistics of Czech Social Security Administration and EU-SILC survey (CZK monthly).....	6
Table 1.3: Other household income sources in 2017.....	6
Table 1.4: Total disposable income per capita by National Accounts (NA) and EU-SILC (annual ths. CZK).....	7
Table 2.1: Poverty indicators by economic activity in 2018 (% of persons).....	9
Table 4.1: Poverty indicators in Central European countries in 2018 (% of persons).....	19
Table 4.2: Income poverty and great difficulty to make ends meet by age in Central European countries in 2018 (% of age category).....	20
Table 4.3: Incidence of poverty in three 4-year periods in Central European countries (%).....	21

List of figures

Figure 1.1: Composition of the indicator At risk of poverty or social exclusion in 2018 (%).....	5
Figure 1.2: Monthly earnings of employees, CZSO, ISPV and EU-SILC (ths. CZK).....	5
Figure 2.1: Actual and minimum necessary monthly income by actual income deciles in 2018.....	8
Figure 2.2: Great difficulty to make ends meet by real income deciles in 2018 (%).....	8
Figure 2.3: Relation of poverty indicators in 2018 (%).....	9
Figure 2.4: Great difficulty to make ends meet and at-risk-of-poverty rate in 2018 (ths. of persons and %).....	9
Figure 2.5: At-risk-of-poverty rate by regions in 2018 (%).....	10
Figure 2.6: Great difficulty to make ends meet by regions in 2018 (%).....	10
Figure 2.7: The difference between at-risk-of-poverty rate and great difficulty to make ends meet by regions in 2018 (pp).....	11
Figure 2.8: At-risk-of-poverty rate (income poverty), material deprivation and great difficulty to make ends meet by 5-year age categories in 2018 (%).....	11
Figure 2.9: Average score of life satisfaction (0-10) of persons at risk of poverty and others by various indicators in 2018.....	12
Figure 2.10: Average score of satisfaction with financial situation (0-10) of persons at risk of poverty and others by various indicators in 2018.....	12
Figure 3.1: Incidence of income poverty in three 4-year periods (%).....	13
Figure 3.2: Incidence of material deprivation in three 4-year periods (%).....	13
Figure 3.3: Incidence of great difficulty to make ends meet in three 4-year periods (%).....	14
Figure 3.4a: Financial situation when respondents were around 14 years old and current ability to make ends meet, 2011 (%).....	15
Figure 3.4b: Financial situation when respondents were around 14 years old and current ability to make ends meet, 2019 (%).....	15
Figure 3.5a: Financial situation when respondents were around 14 years old and change to current situation, 2011 (%).....	16
Figure 3.5b: Financial situation when respondents were around 14 years old and change to current situation, 2019 (%).....	16
Figure 4.1: At-risk-of-poverty rate in EU countries in 2018 (%).....	17
Figure 4.2: Material deprivation in EU countries in 2018 (%).....	17
Figure 4.3: Low work intensity in EU countries in 2018 (% of population 18-59).....	18
Figure 4.4: Poverty or social exclusion in EU countries in 2018 (%).....	18
Figure 4.5: Great difficulty to make ends meet in EU countries in 2018 (%).....	18
Figure 4.6: Relation of "objective" and "subjective" poverty indicators in Central European countries in 2018 (%).....	19
Figure 4.7: Total disposable income per capita - comparison of National Accounts and EU-SILC in transition Central European countries (EU-SILC/NA ratio).....	20

1. What do the “objective” indicators of poverty show?

Figure 1.1: Composition of the indicator At risk of poverty or social exclusion in 2018 (%)



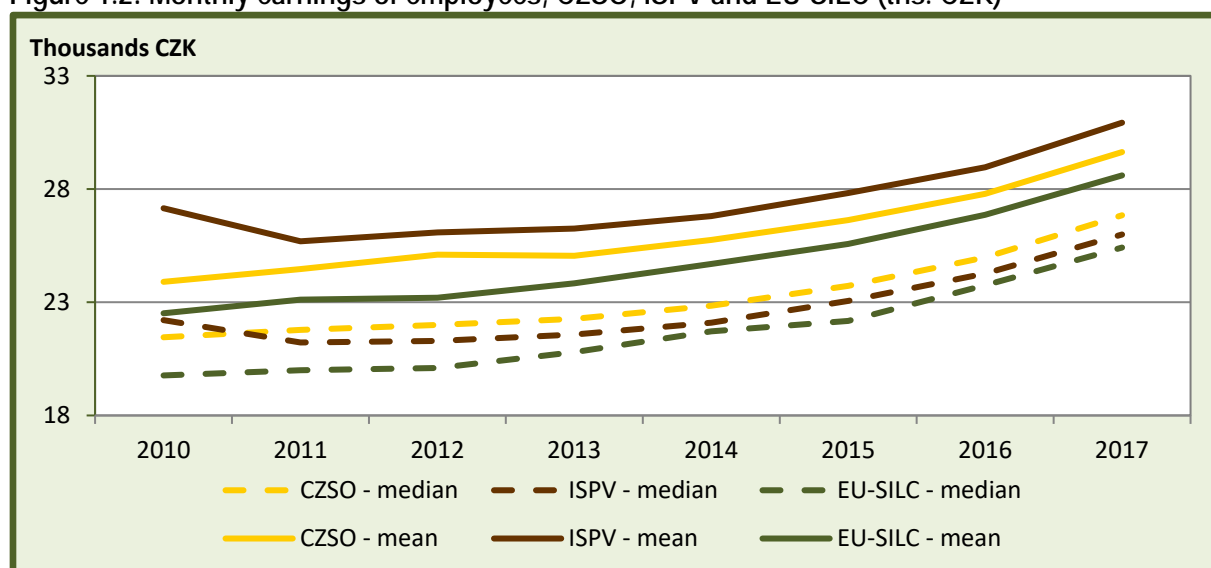
Source: EU-SILC 2018, authors' computations.

Table 1.1: Earnings of employees by company and household surveys (CZK monthly)

Quantile	Company survey (ISPV)			Household survey (EU-SILC)			EU-SILC/ISPV ratio		
	2015	2016	2017	2015	2016	2017	2015	2016	2017
1. decile	11 925	12 718	14 000	12 853	12 991	14 413	1.08	1.02	1.03
1. quartile	16 489	17 694	18 889	16 372	17 942	18 808	0.99	1.01	1.00
Median	23 062	24 265	25 994	22 179	23 750	25 417	0.96	0.98	0.98
3. quartile	31 762	32 859	35 191	30 000	31 491	33 605	0.94	0.96	0.95
9. decile	45 041	46 153	49 305	40 000	43 859	44 465	0.89	0.95	0.90
Mean	27 825	28 964	30 932	25 576	26 864	28 604	0.92	0.93	0.92

Source: ISPV database and EU-SILC survey, computations by Šárka Šandová.

Figure 1.2: Monthly earnings of employees, CZSO, ISPV and EU-SILC (ths. CZK)



Source: CZSO – publication “Labour Statistics: Time Series of Basic Indicators - August 2020” – Table 7 (mean), Table 14 (median)*, ISPV, EU-SILC.

Notes: *Data in Table 7 are taken from CZSO annual statistical reports; data in Table 14 come from the Information System on Average Earnings (ISPV) and the Salary Information System (ISP).

Table 1.2: Pensions by statistics of Czech Social Security Administration and EU-SILC survey (CZK monthly)

Quantile	CSSA			EU-SILC			EU-SILC/CSSA ratio		
	2015	2016	2017	2015	2016	2017	2015	2016	2017
1. decile	8 522	8 576	8 813	7 934	7 890	8 031	0.931	0.920	0.911
1. quartile	9 374	9 401	9 705	9 624	9 852	10 023	1.027	1.048	1.033
Median	11 230	11 344	11 725	11 236	11 376	11 634	1.001	1.003	0.992
3. quartile	12 702	12 748	13 181	13 000	13 140	13 437	1.023	1.031	1.019
9. decile	14 379	14 501	14 991	15 000	15 100	15 440	1.043	1.041	1.030
Mean	10 994	11 078	11 435	11 365	11 556	11 847	1.034	1.043	1.036

Source: Czech Social Security Administration database and EU-SILC survey, computations by Simona Měřinská and Šárka Šandová.

Note: Pensions include all types except orphans' pensions.

Table 1.3: Other household income sources in 2017

	% of households with recorded income source	Annual income (ths. CZK) of households with recorded income source					
		Mean	1. decile	1. quartile	Median	3. quartile	9. decile
Earnings from secondary employment and self-employment:							
- secondary employment	8.8	67.1	9.6	21.2	48.0	80.0	145.8
- secondary self-employment	3.8	83.4	9.4	30.0	50.0	98.0	156.0
Income from capital investments, rental, sale and insurance:							
- capital	6.7	39.4	0.1	0.1	0.6	5.8	23.5
- rental	6.8	61.4	1.9	8.2	23.5	72.0	150.0
- sale	0.4	17.4			10.0		
- retirement and life insurance	0.5	127.5			70.0		
- other types of insurance	1.0	48.0	1.2		7.0		60.0
- another income	2.9	70.2	0.2	0.7	3.0	20.0	130.0
- private pensions	0.3	26.1			12.0		
Inter-household transfers:							
- cash transfers	55.2	15.0	2.0	3.0	5.0	10.0	36.0
- non-cash transfers	50.3	5.4	1.0	2.0	3.5	6.0	10.0
Non-cash employee income:							
- meals vouchers and other food subsidies	42.1	13.0	5.5	7.9	11.0	16.8	23.8
- car, phone, fuel etc.	29.5	17.3	2.0	3.6	8.5	24.0	45.5
Value of goods produced for own consumption	28.8	6.4	0.5	1.2	3.2	7.5	15.3

Source: EU-SILC 2018, computations by Simona Měřinská.

Note: Definitions of some of the income variables have changed between EU-SILC 2014 (the original version of the publication) and EU-SILC 2018 (the updated version) due to the harmonisation with EU's methodology; e.g., "another income" item is not comparable with the results in the original version.

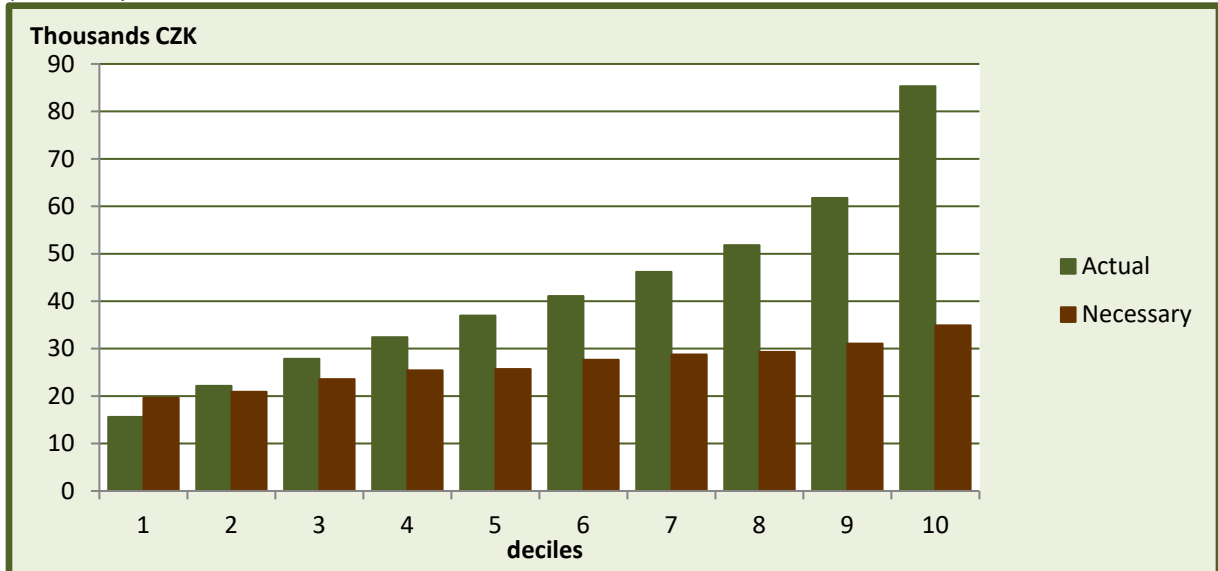
Table 1.4: Total disposable income per capita by National Accounts (NA) and EU-SILC (annual ths. CZK)

	2007	2008	2009	2010	2011	2012	2013	2014	2015	2016	2017
NA	187.1	200.6	206.4	208.7	209.9	212.9	213.0	220.3	228.4	236.3	252.9
EU-SILC	126.3	137.5	140.9	143.0	145.5	147.7	150.9	154.8	161.8	168.9	164.5
EU-SILC/NA ratio	0.68	0.69	0.68	0.69	0.69	0.69	0.71	0.70	0.71	0.71	0.65

Source: National Accounts database and EU-SILC survey.

2. How do “objective” indicators correspond to households’ declaration?

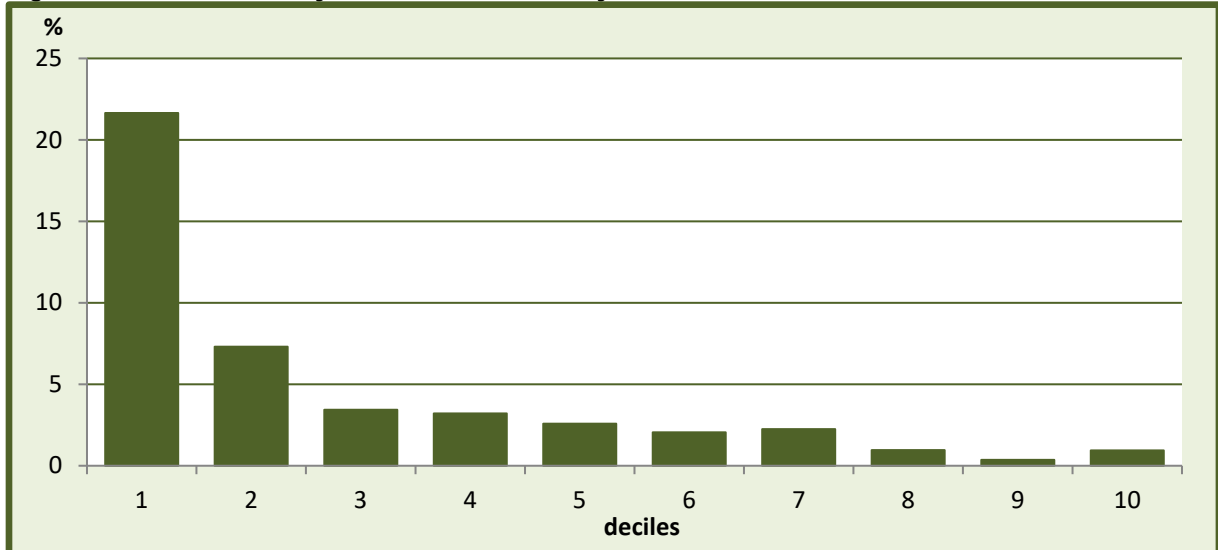
Figure 2.1: Actual and minimum necessary monthly income by actual income deciles in 2018 (ths. CZK)



Source: EU-SILC 2018, authors’ computations.

Note: Deciles of equivalised actual income using the EU scale.

Figure 2.2: Great difficulty to make ends meet by real income deciles in 2018 (%)



Source: EU-SILC 2018, authors’ computations.

Note: Deciles of equivalised actual income using the EU scale.

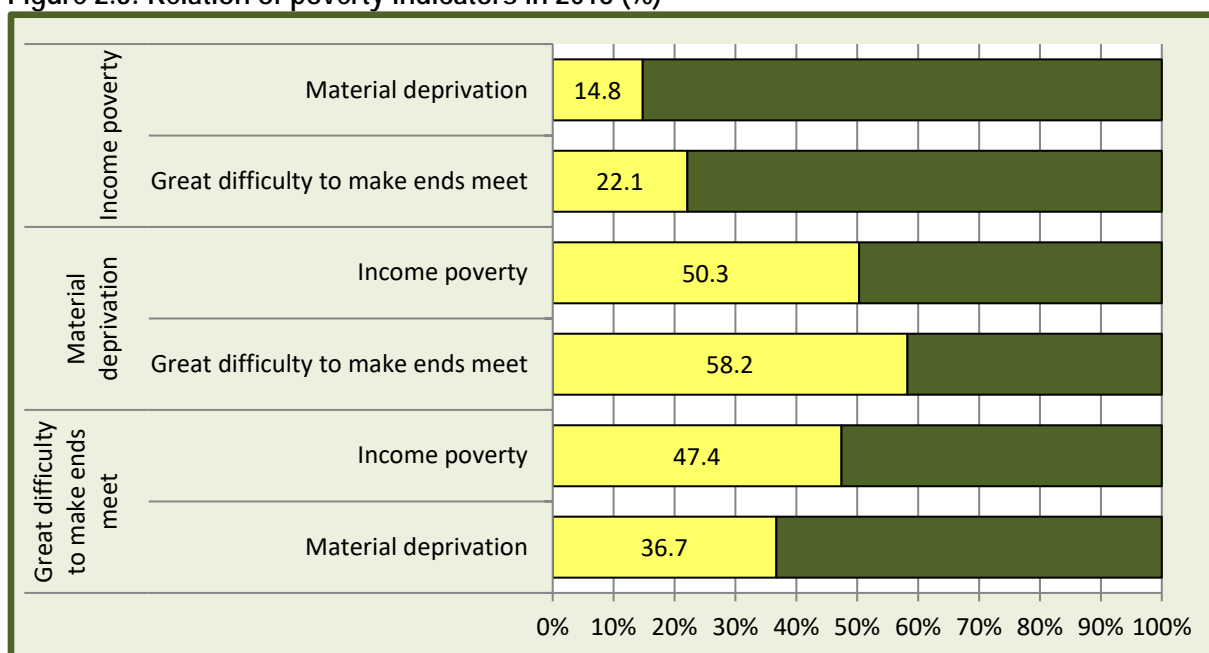
Table 2.1: Poverty indicators by economic activity in 2018 (% of persons)

	Employees	Self-employed	Unemployed	Retired	Total
Income poverty	2.7	7.2	51.8	14.7	9.6
Material deprivation	1.7	1.2	18.9	3.2	2.8
Low work intensity	0.0	0.1	34.4	4.0 ^a	3.3
<i>Poverty or social exclusion</i>	<i>4.1</i>	<i>8.4</i>	<i>60.0</i>	<i>18.9</i>	<i>12.2</i>
Low income	3.2	6.2	25.0	8.1	6.2
Great difficulty to make ends meet	2.8	1.1	23.6	4.7	4.5

Source: EU-SILC 2018, authors' computations.

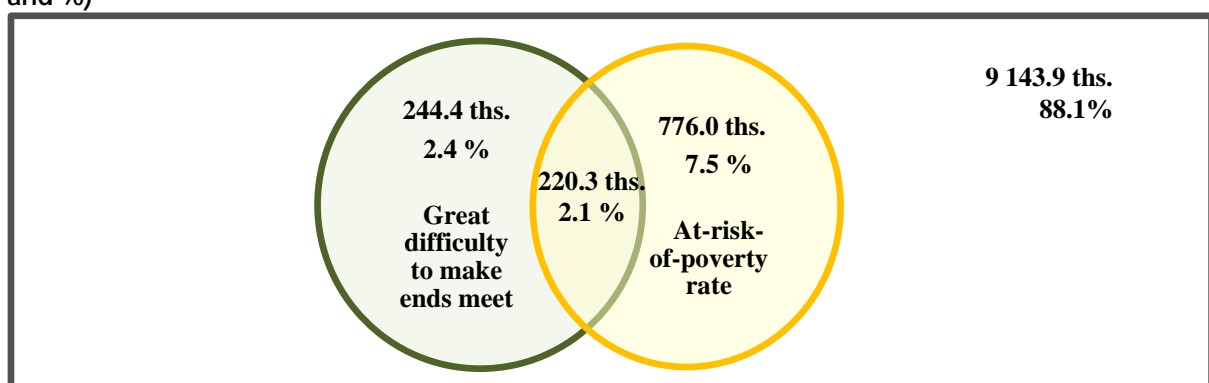
Note: ^a By definition, only retired younger than 60 years can achieve Low work intensity.

Figure 2.3: Relation of poverty indicators in 2018 (%)



Source: EU-SILC 2018, authors' computations.

Figure 2.4: Great difficulty to make ends meet and at-risk-of-poverty rate in 2018 (ths. of persons and %)



Source: EU-SILC 2018, authors' computations.

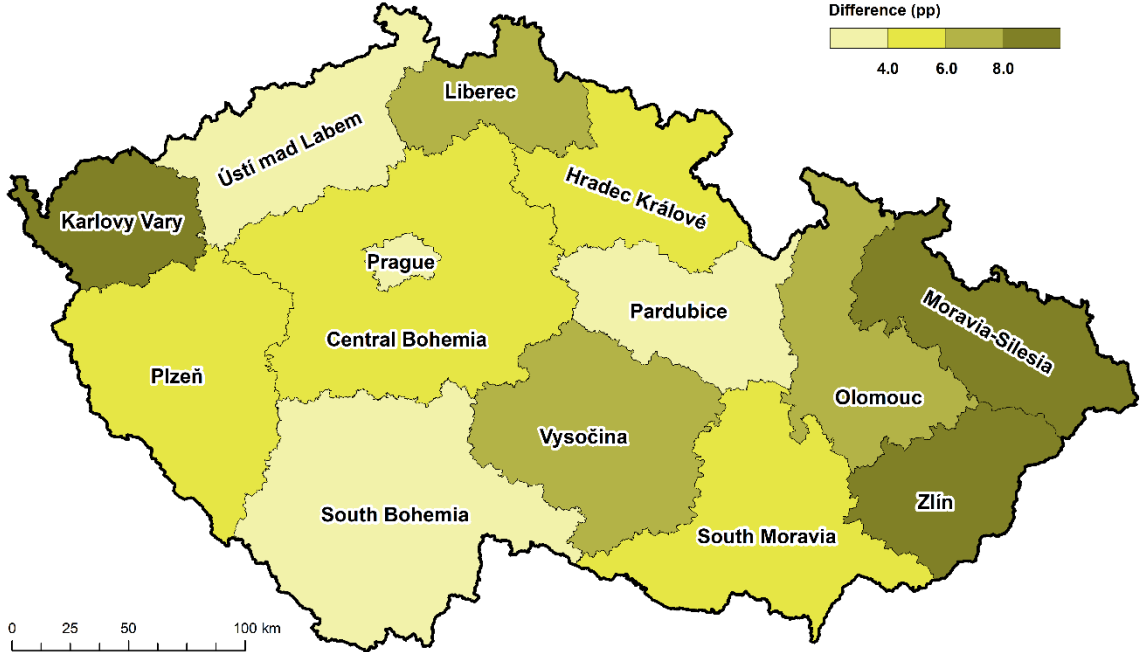
Figure 2.5: At-risk-of-poverty rate by regions in 2018 (%)



Figure 2.6: Great difficulty to make ends meet by regions in 2018 (%)

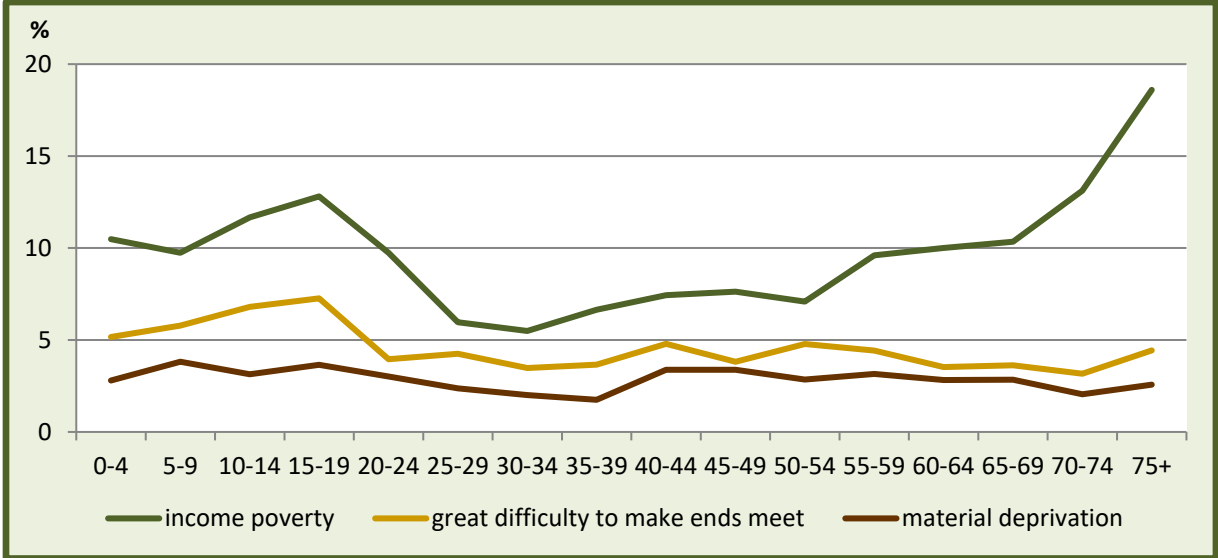


Figure 2.7: The difference between at-risk-of-poverty rate and great difficulty to make ends meet by regions in 2018 (pp)



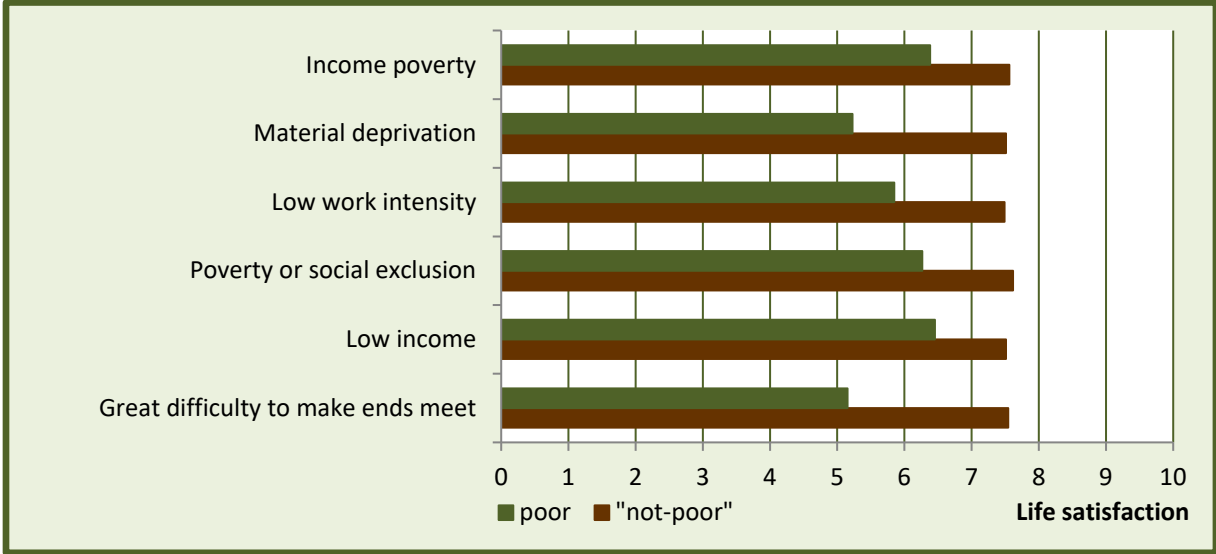
Source: EU-SILC 2018, authors' computations.

Figure 2.8: At-risk-of-poverty rate (income poverty), material deprivation and great difficulty to make ends meet by 5-year age categories in 2018 (%)



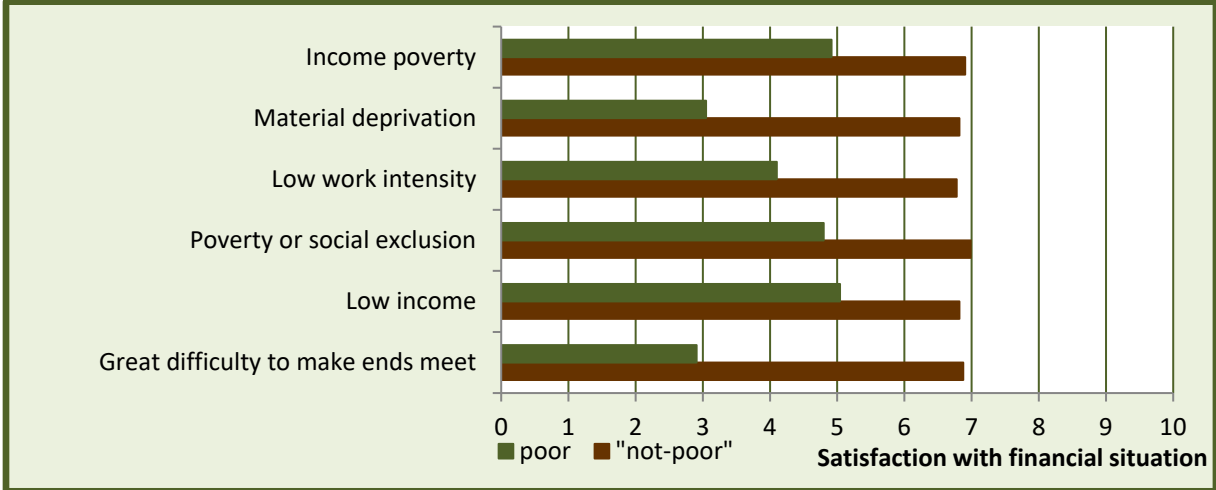
Source: EU-SILC 2018, authors' computations.

Figure 2.9: Average score of life satisfaction (0-10) of persons at risk of poverty and others by various indicators in 2018



Source: EU-SILC 2018, authors' computations.

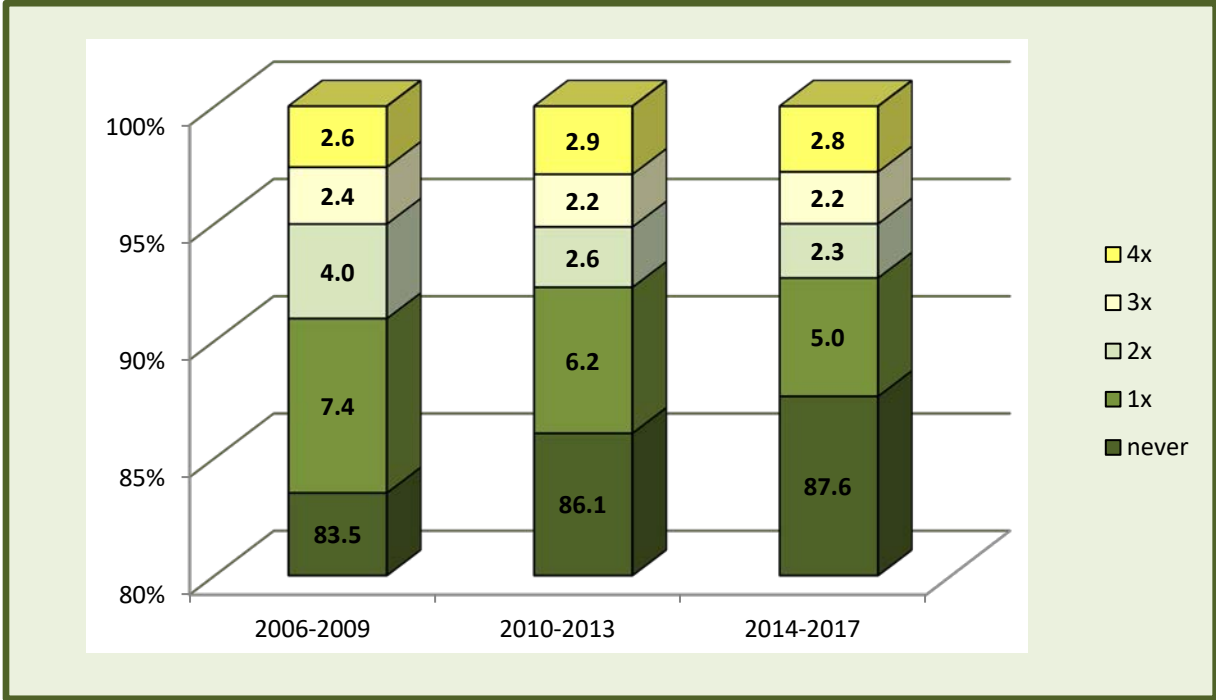
Figure 2.10: Average score of satisfaction with financial situation (0-10) of persons at risk of poverty and others by various indicators in 2018



Source: EU-SILC 2018, authors' computations.

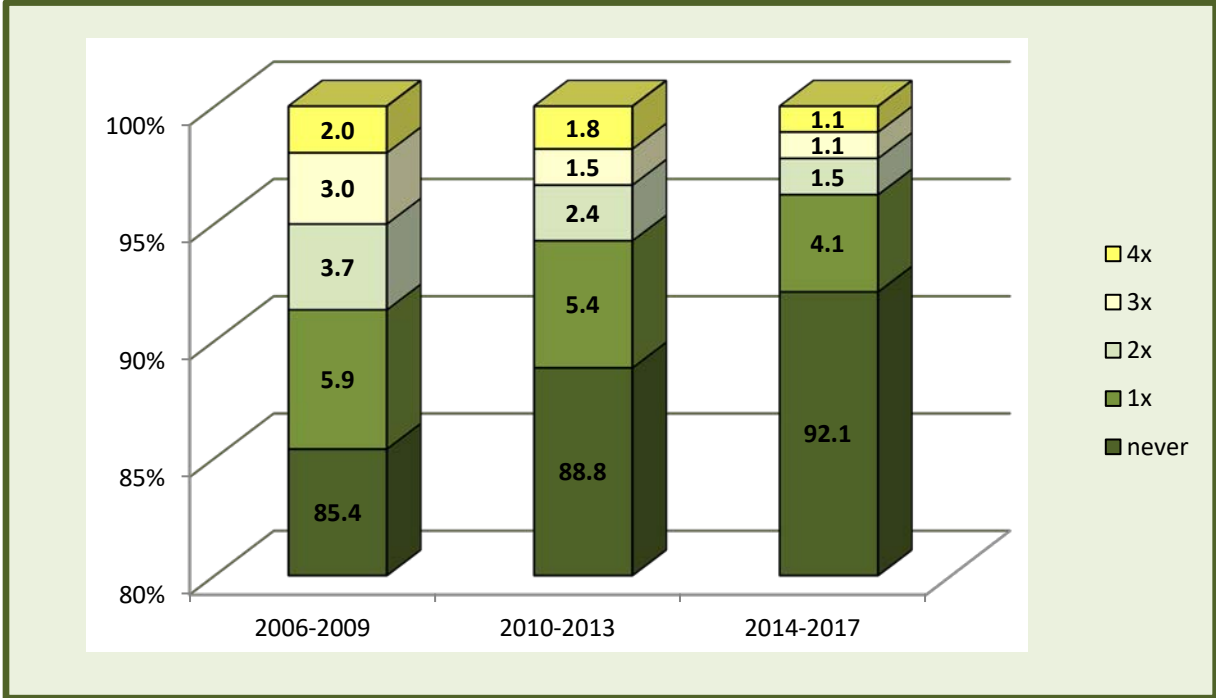
3. How long do people stay in poverty?

Figure 3.1: Incidence of income poverty in three 4-year periods (%)



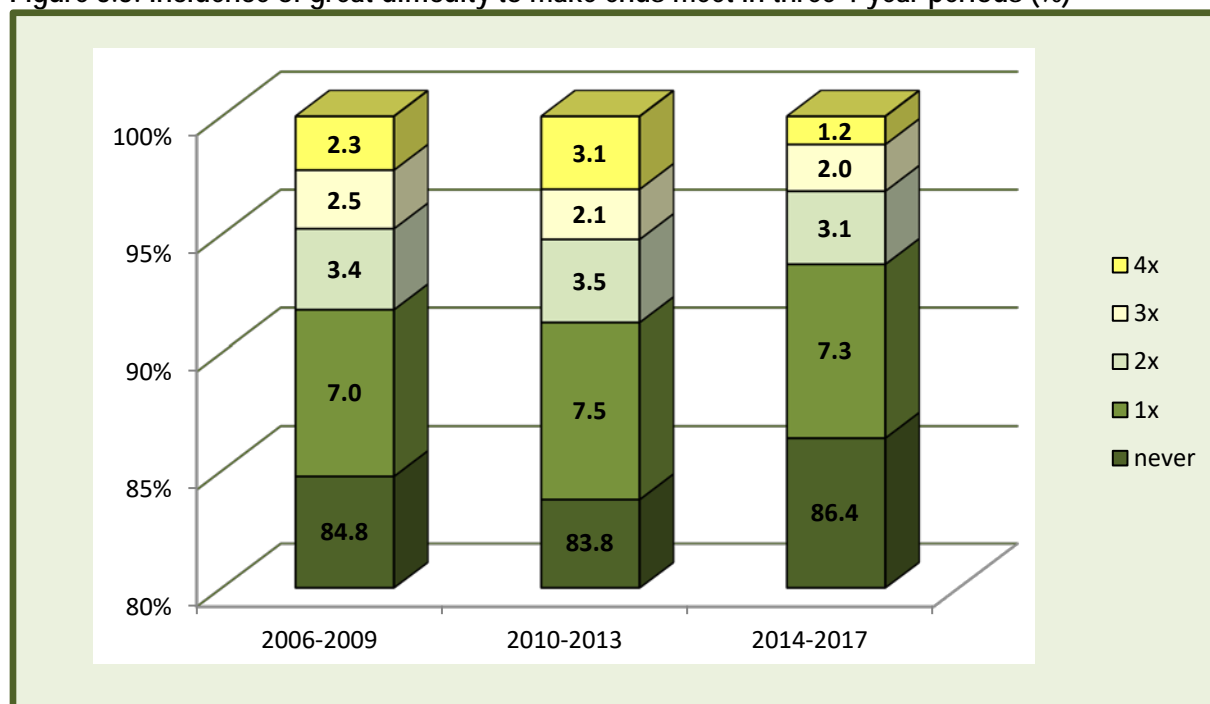
Source: longitudinal EU-SILC 2009, 2013 and 2017, authors' computations.

Figure 3.2: Incidence of material deprivation in three 4-year periods (%)



Source: longitudinal EU-SILC 2009, 2013 and 2017, authors' computations.

Figure 3.3: Incidence of great difficulty to make ends meet in three 4-year periods (%)



Source: longitudinal EU-SILC 2009, 2013 and 2017, authors' computations.

Box: Intergenerational transmission of disadvantages – EU-SILC modules 2011 and 2019

EU-SILC 2011 and EU-SILC 2019 surveys included a module on intergenerational transmission of disadvantages. While it contained a question on the ability to make ends meet when respondent was around 14 years old in 2011, this question was left out in 2019. This question was used in the original version of this publication for the comparison of current and past situations of respondents' ability to make ends meet in EU-SILC 2011 in Figures 3.4 and 3.5.

However, both in 2011 and 2019, the EU-SILC modules included a question on financial situation of the household when respondent was around 14 years old (see the exact wording of the question below). In order to provide figures comparable between the 2011 and 2019 modules, we utilise the question on the past financial situation (similar to the ability to make ends meet in its meaning) for a comparison with the current ability to make ends meet.

To provide comparable figures, we replaced Figures 3.4 and 3.5 in the original version of this publication by Figures 3.4a and 3.5a for 2011 data, while Figures 3.4b and 3.5b correspond to 2019 data.

Wording of applied questions and their modalities

Financial situation of the household when respondent was around 14 years old:

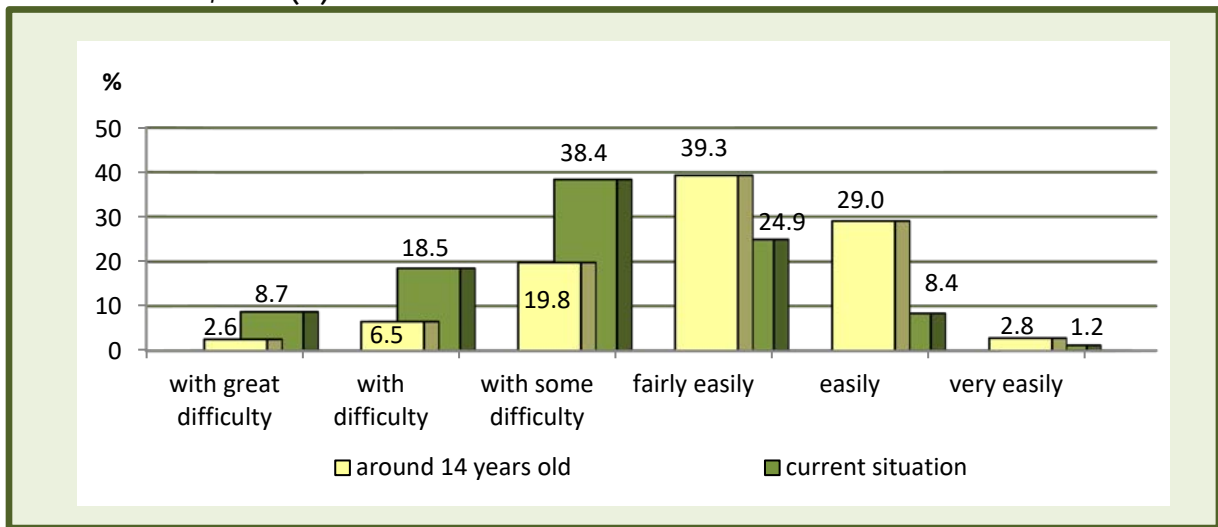
- 1) very bad
- 2) bad
- 3) moderately bad
- 4) moderately good
- 5) good
- 6) very good
- don't know

Ability to make ends meet (current situation):

- 1) with great difficulty
- 2) with difficulty
- 3) with some difficulty
- 4) fairly easily
- 5) easily
- 6) very easily

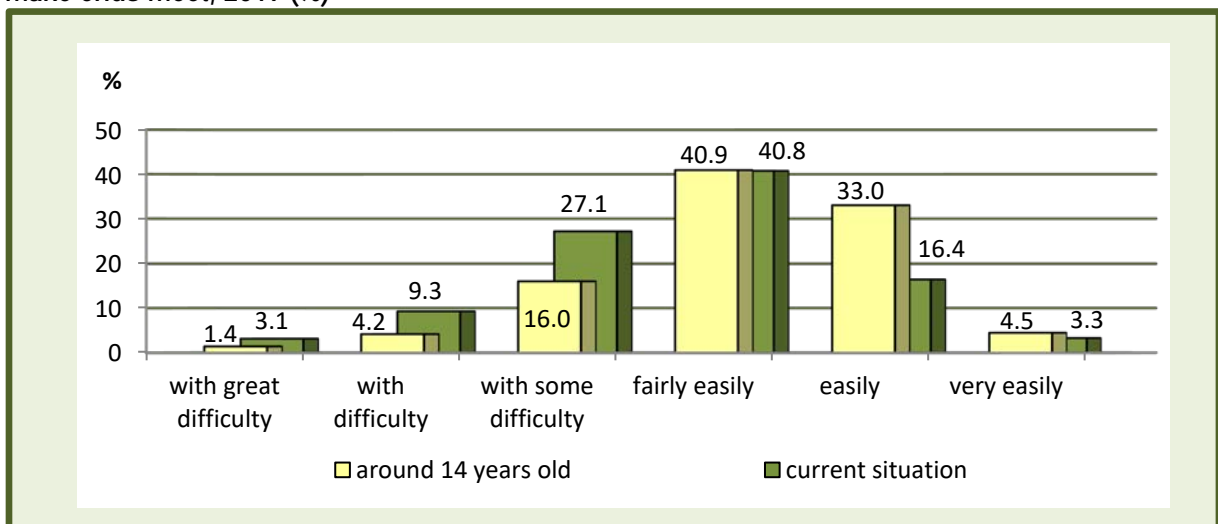
In Figures 3.4a-3.4b, we match the answers of the two questions respectively to their numbering and label the options according to the "ability to make ends meet" question.

Figure 3.4a: Financial situation when respondents were around 14 years old and current ability to make ends meet, 2011 (%)



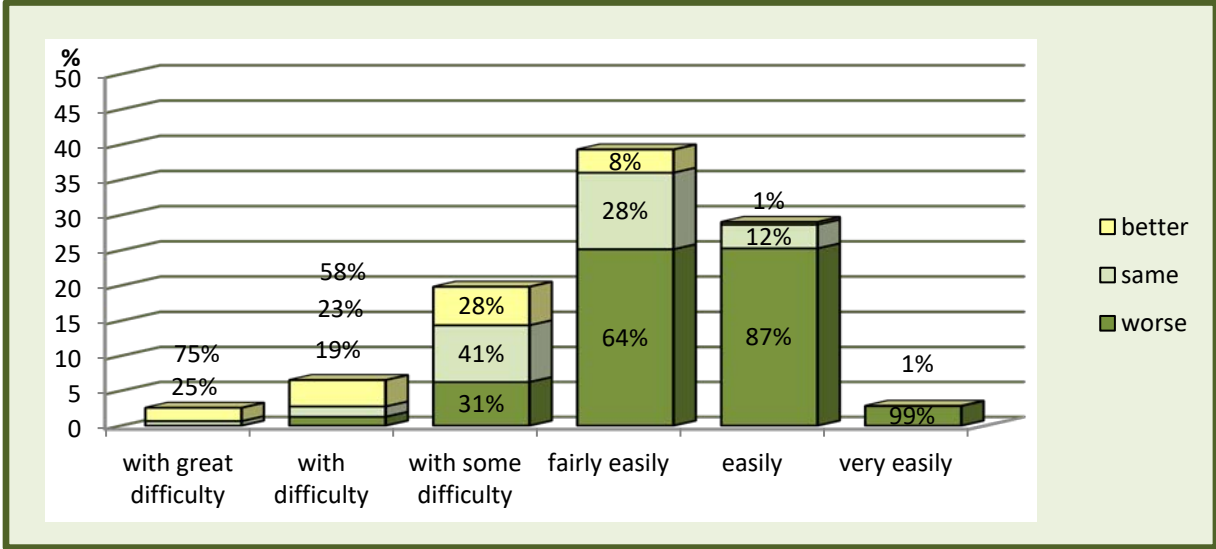
Source: EU-SILC 2011, computations by Simona Měřinská.

Figure 3.4b: Financial situation when respondents were around 14 years old and current ability to make ends meet, 2019 (%)



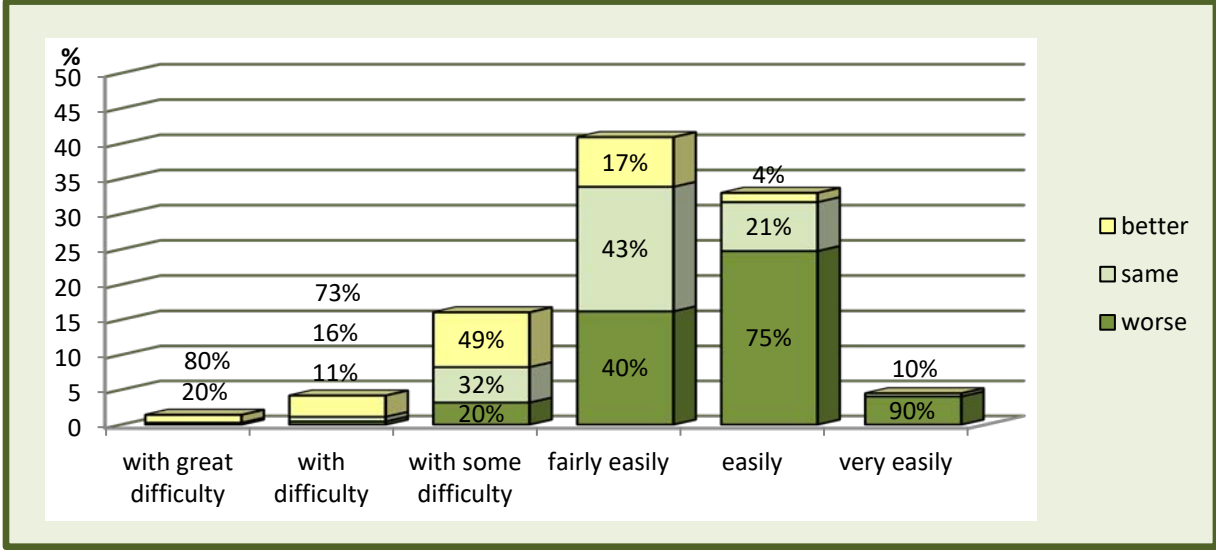
Source: EU-SILC 2019, computations by Simona Měřinská.

Figure 3.5a: Financial situation when respondents were around 14 years old and change to current situation, 2011 (%)



Source: EU-SILC 2011, computations by Simona Měřinská.

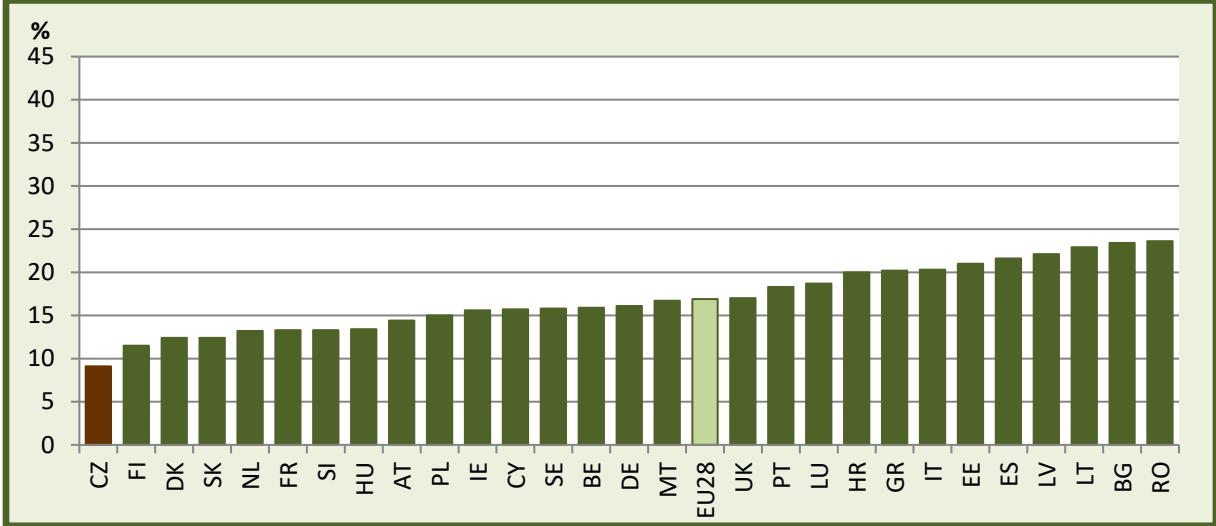
Figure 3.5b: Financial situation when respondents were around 14 years old and change to current situation, 2019 (%)



Source: EU-SILC 2019, computations by Simona Měřinská.

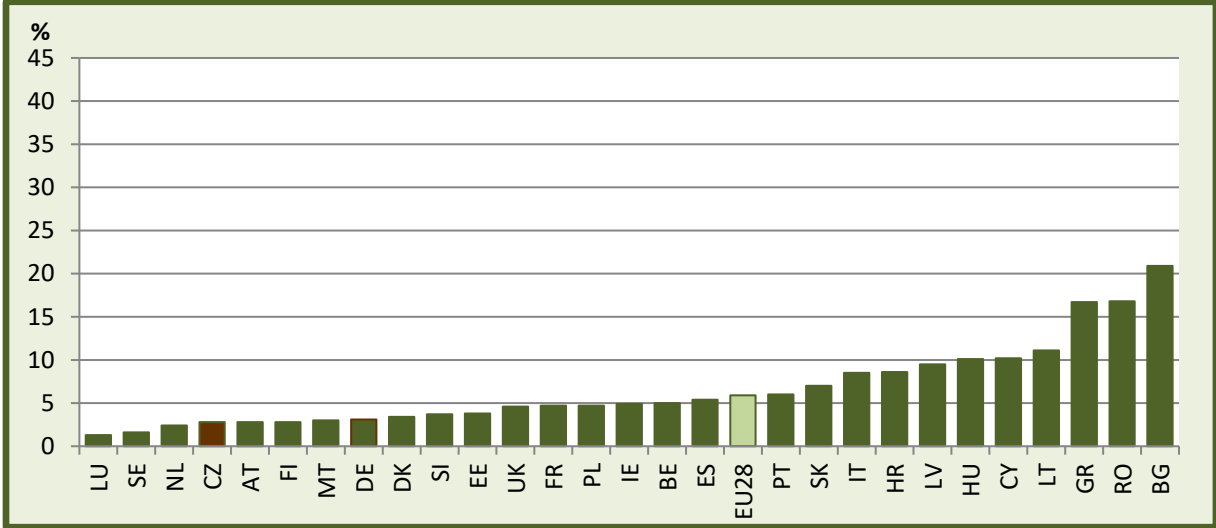
4. Poverty in the Czech Republic in cross-national comparison

Figure 4.1: At-risk-of-poverty rate in EU countries in 2018 (%)



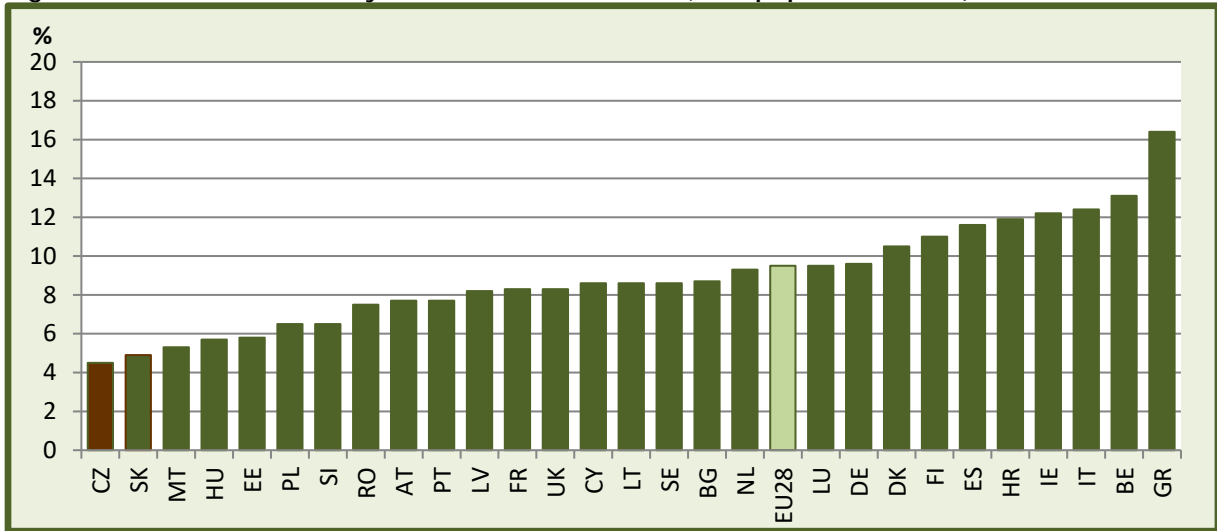
Source: EU-SILC - Eurostat tab ilc_li02.

Figure 4.2: Material deprivation in EU countries in 2018 (%)



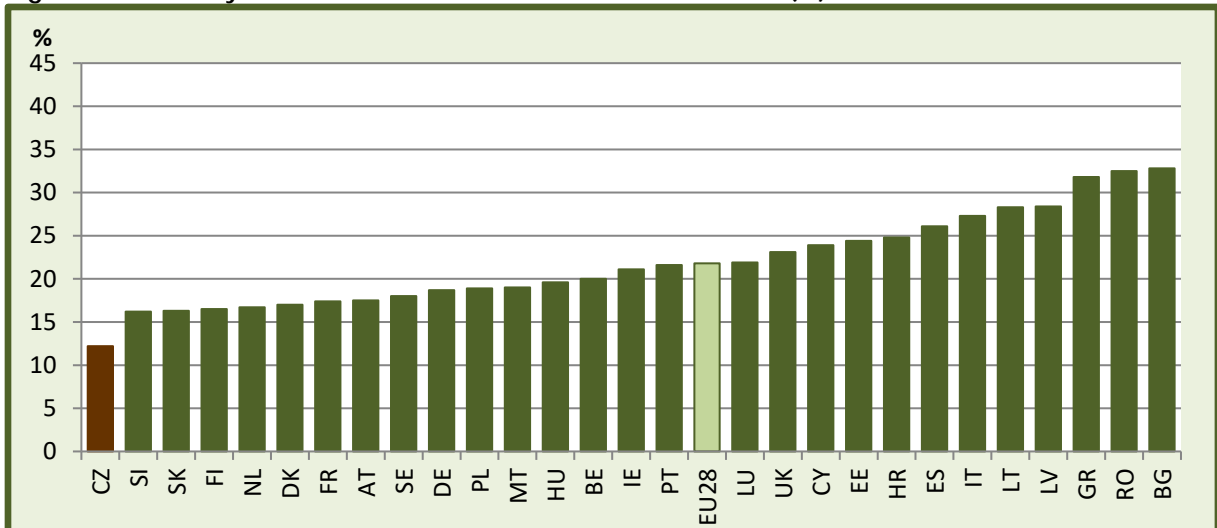
Source: EU-SILC - Eurostat tab ilc_sip8.

Figure 4.3: Low work intensity in EU countries in 2018 (% of population 18-59)



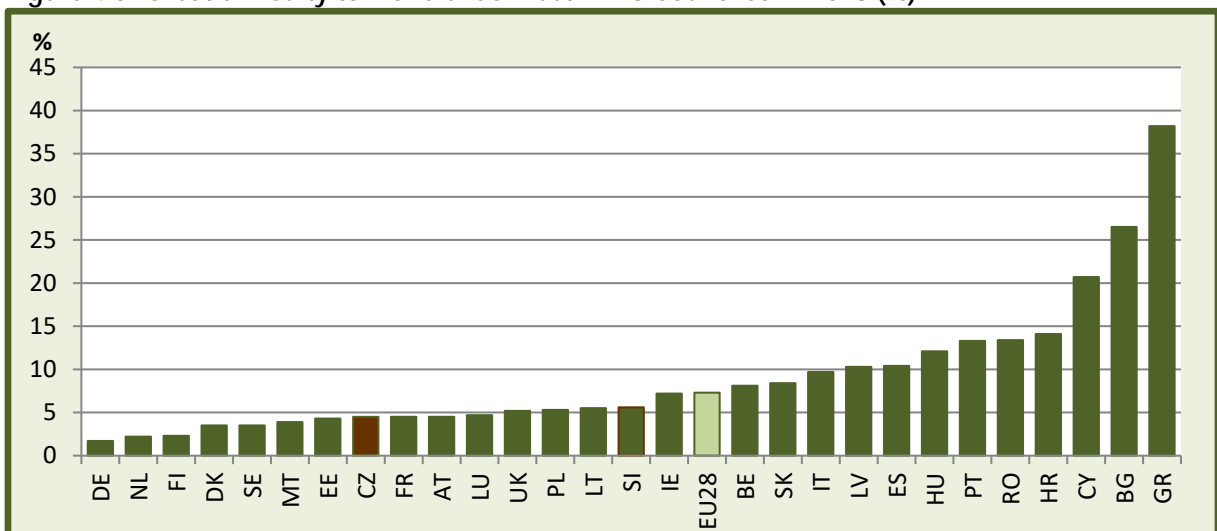
Source: EU-SILC - Eurostat tab ilc_lvh114.

Figure 4.4: Poverty or social exclusion in EU countries in 2018 (%)



Source: EU-SILC - Eurostat tab ilc_peps01.

Figure 4.5: Great difficulty to make ends meet in EU countries in 2018 (%)



Source: EU-SILC - Eurostat tab ilc_mdcs09.

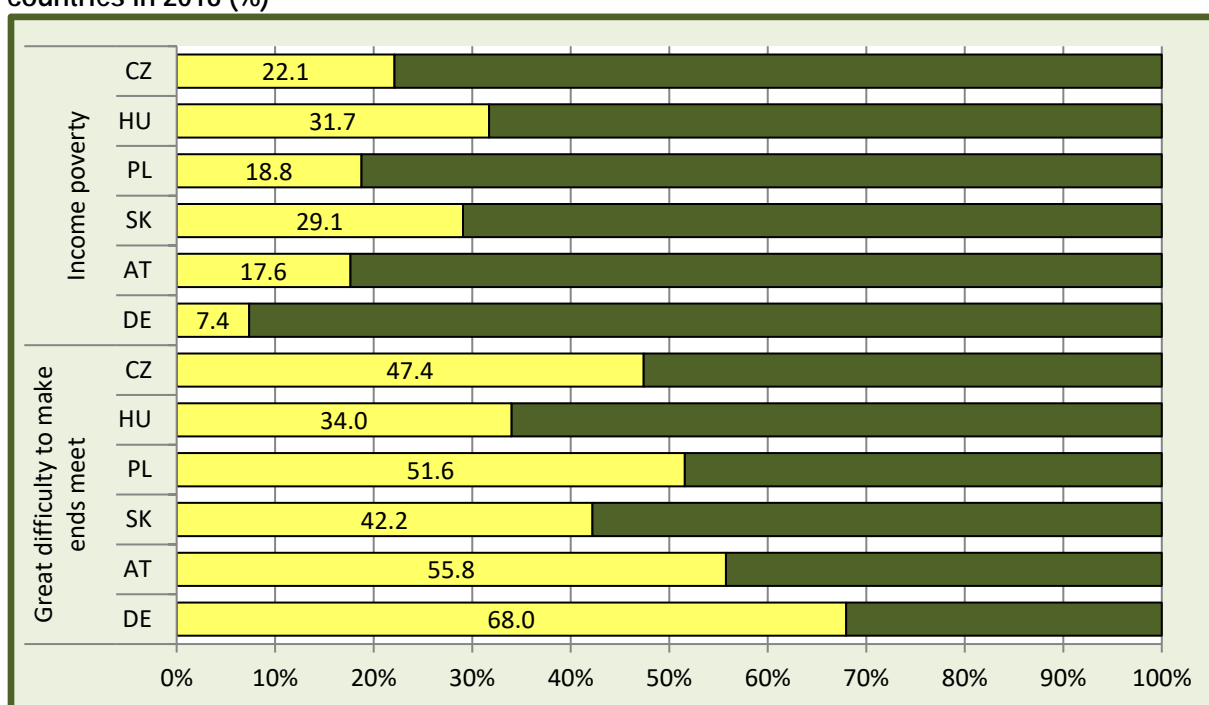
Table 4.1: Poverty indicators in Central European countries in 2018 (% of persons)

	CZ	Hungary	Poland	Slovakia	Austria	Germany	EU-28
Income poverty	9.6	12.8	14.8	12.2	14.3	16.0	17.1
Material deprivation	2.8	10.1	4.7	7.0	2.8	3.1	5.9
Low work intensity ^a	4.5	5.7	6.5	4.9	7.7	9.6	9.5
<i>Poverty or social exclusion</i>	<i>12.2</i>	<i>19.6</i>	<i>18.9</i>	<i>16.3</i>	<i>17.5</i>	<i>18.7</i>	<i>21.8</i>
Low income	6.2	7.1	12.1	19.5	3.9	7.5	13.6
Great difficulty to make ends meet	4.5	12.1	5.3	8.4	4.5	1.7	7.3

Source: EU-SILC - Eurostat tab *ilc_li02, ilc_sip8, ilc_lvhl14, ilc_peps01, ilc_mdcs09*; EU-SILC 2018 for Low income (authors' computations).

Notes: ^a Low work intensity concerns population 18-59.

Figure 4.6: Relation of "objective" and "subjective" poverty indicators in Central European countries in 2018 (%)



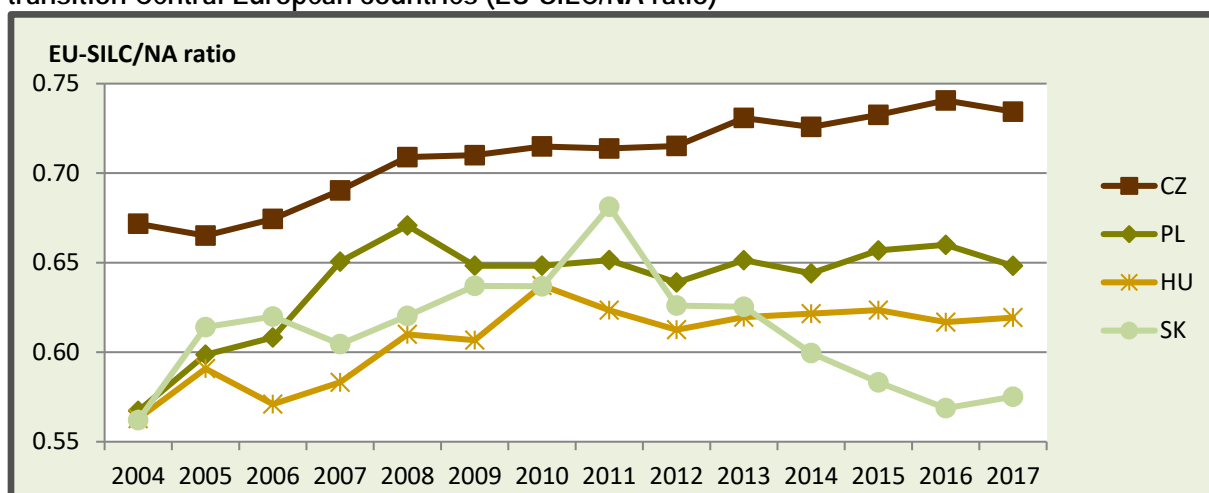
Source: EU-SILC 2018, authors' computations.

Table 4.2: Income poverty and great difficulty to make ends meet by age in Central European countries in 2018 (% of age category)

	CZ	Hungary	Poland	Slovakia	Austria	Germany
Income poverty						
Total	9.6	12.8	14.8	12.2	14.3	16.0
0-17	11.0	13.8	13.0	20.5	19.2	14.5
18-64	7.7	13.4	15.2	11.3	13.0	15.7
65+	14.2	9.8	15.5	6.4	13.9	18.2
Ratio 0-17/65+	0.77	1.41	0.84	3.20	1.38	0.80
Great difficulty to make ends meet						
Total	4.5	12.1	5.3	8.4	4.5	1.7
0-17	6.1	14.9	3.7	10.6	6.2	1.6
18-64	4.2	12.1	5.5	7.7	4.7	1.8
65+	3.8	8.7	6.6	8.8	2.3	1.5
Ratio 0-17/65+	1.61	1.71	0.56	1.19	2.68	1.05

Source: EU-SILC - Eurostat tab ilc_li02 for Income poverty; EU-SILC 2018 for Great difficulty to make ends meet (authors' computations)

Figure 4.7: Total disposable income per capita - comparison of National Accounts and EU-SILC in transition Central European countries (EU-SILC/NA ratio)



Source: Eurostat database - tab nasa_10_nf_tr and EU-SILC, authors' computations.

Table 4.3: Incidence of poverty in three 4-year periods in Central European countries (%)

	CZ	HU	PL	SK	AT
First period (2006-2009)					
<i>At-risk-of-poverty rate</i>					
Never	83.5	72.1	69.3	76.6	74.7
1x	7.4	12.9	11.5	12.7	11.2
2x-4x	9.0	15.1	19.2	10.8	14.1
Total	100.0	100.0	100.0	100.0	100.0
Ratio 2x-4x / at least 1x	54.9	53.9	62.5	46.0	55.7
<i>Great difficulty to make ends meet</i>					
Never	84.8	63.3	69.4	75.1	90.4
1x	7.0	16.3	12.0	13.1	6.8
2x-4x	8.2	20.4	18.6	11.9	2.8
Total	100.0	100.0	100.0	100.0	100.0
Ratio 2x-4x / at least 1x	53.9	55.6	60.8	47.6	29.2
Second period (2010-2013)					
<i>At-risk-of-poverty rate</i>					
Never	86.1	77.6	71.9	75.0	75.1
1x	6.2	8.7	9.8	10.9	8.6
2x-4x	7.7	13.7	18.3	14.1	16.3
Total	100.0	100.0	100.0	100.0	100.0
Ratio 2x-4x / at least 1x	55.4	61.2	65.1	56.4	65.5
<i>Great difficulty to make ends meet</i>					
Never	83.8	58.6	76.6	80.0	87.0
1x	7.5	13.6	8.9	9.1	7.2
2x-4x	8.7	27.8	14.5	10.9	5.8
Total	100.0	100.0	100.0	100.0	100.0
Ratio 2x-4x / at least 1x	53.7	67.1	62.0	54.5	44.6
Third period (2014-2017)					
<i>At-risk-of-poverty rate</i>					
Never	87.6	74.3	70.2		77.4
1x	5.0	10.1	9.8		6.6
2x-4x	7.3	15.6	20.0		16.0
Total	100.0	100.0	100.0		100.0
Ratio 2x-4x / at least 1x	59.2	60.8	67.1		70.7
<i>Great difficulty to make ends meet</i>					
Never	86.4	66.5	82.2		88.9
1x	7.3	12.5	8.1		5.9
2x-4x	6.3	21.0	9.7		5.2
Total	100.0	100.0	100.0		100.0
Ratio 2x-4x / at least 1x	46.1	62.6	54.6		47.0

Source: longitudinal EU-SILC 2009, 2013 and 2017, authors' computations.

Appendix: Comparative tables in European countries

List of tables

Table A.1: At-risk-of poverty rate (income poverty) (%).....	23
Table A.2: Material deprivation (%).....	24
Table A.3: Low work intensity (% of population aged 18-59)	25
Table A.4: Poverty or social exclusion (%)	26
Table A.5: Great difficulty to make ends meet (%)	27
Table A.6: Total disposable income per capita – comparison of National Accounts and EU-SILC (EU-SILC/NA ratio).....	28
Table A.7: Poverty or social exclusion by age category in 2018 (% of age category).....	29
Table A.8: Income poverty and great difficulty to make ends meet by age in 2018 (% of age category)	30
Table A.9: Incidence of income poverty in three 4-year periods (%).....	31
Table A.10: Incidence of material deprivation in three 4-year periods (%).....	32
Table A.11: Incidence of great difficulty to make ends meet in three 4-year periods (%).....	33

Table A.1: At-risk-of poverty rate (income poverty) (%)

	2010	2011	2012	2013	2014	2015	2016	2017	2018	2019
AT	14.7	14.5	14.4	14.4	14.1	13.9	14.1	14.4	14.3	13.3
BE	14.6	15.3	15.3	15.1	15.5	14.9	15.5	15.9	16.4	:
BG	20.7	22.2	21.2	21.0	21.8	22.0	22.9 ^b	23.4	22.0	22.6
CY	15.6	14.8	14.7	15.3	14.4	16.2	16.1	15.7	15.4	14.7
CZ	9.0	9.8	9.6	8.6	9.7	9.7	9.7	9.1	9.6	10.1
DE	15.6	15.8	16.1	16.1	16.7	16.7	16.5	16.1	16.0	:
DK	13.3	12.1	12.0	11.9	12.1	12.2	11.9	12.4	12.7	12.5
EE	15.8	17.5	17.5	18.6	21.8	21.6	21.7	21.0	21.9	21.7
EL	20.1	21.4	23.1	23.1	22.1	21.4	21.2	20.2	18.5	17.9
ES	20.7	20.6	20.8	20.4	22.2	22.1	22.3	21.6	21.5	20.7
FI	13.1	13.7	13.2	11.8	12.8	12.4	11.6	11.5	12.0	11.6
FR	13.3	14.0	14.1	13.7	13.3	13.6	13.6	13.2	13.4	:
HR	20.6	20.9	20.4	19.5	19.4	20.0	19.5	20.0	19.3	18.3 ^p
HU	12.3	14.1	14.3	15.0	15.0	14.9	14.5	13.4	12.8	12.3
IE	15.2	15.2	16.3	15.7	16.4	16.2	16.8	15.6	14.9	:
IT	18.7	19.8	19.5	19.3	19.4	19.9	20.6	20.3	20.3	:
LT	20.5	19.2	18.6	20.6	19.1	22.2	21.9	22.9	22.9	:
LU	14.5	13.6	15.1	15.9	16.4	15.3	16.5 ^b	18.7	18.3	:
LV	20.9	19.0	19.2	19.4	21.2	22.5	21.8	22.1	23.3	22.9
MT	15.5	15.6	15.1	15.8	15.8	16.6	16.5	16.7	16.8	17.1
NL	10.3	11.0	10.1	10.4	11.6	11.6	12.7 ^b	13.2	13.3	13.2 ^p
PL	17.6	17.7	17.1	17.3	17.0	17.6	17.3	15.0	14.8	15.4
PT	17.9	18.0	17.9	18.7	19.5	19.5	19.0	18.3	17.3	:
RO	21.6	22.3	22.9	23.0	25.1	25.4	25.3	23.6	23.5	23.8
SE	14.8	15.4	15.2	16.0	15.6	16.3	16.2	15.8	16.4	17.1
SI	12.7	13.6	13.5	14.5	14.5	14.3	13.9	13.3	13.3	12.0
SK	12.0	13.0	13.2	12.8	12.6	12.3	12.7	12.4	12.2	:
UK	17.1	16.2	16.0	15.9	16.8	16.6	15.9	17.0 ^b	18.6	:
EU-28	16.5	16.9	16.8	16.7	17.2	17.3	17.3	16.9	17.1	:

Source: EU-SILC - Eurostat tab ilc_li02.

Note: b - break in series, p – provisional.

Table A.2: Material deprivation (%)

	2010	2011	2012	2013	2014	2015	2016	2017	2018	2019
AT	4.3	4.0	4.0	4.2	4.0	3.6	3.0	3.7	2.8	2.6
BE	5.9	5.7	6.3	5.1	5.9	5.8	5.5	5.2	5.0	:
BG	45.7	43.6	44.1	43.0	33.1 ^b	34.2	31.9 ^b	30.0	20.9	19.9
CY	11.2	11.7	15.0	16.1	15.3	15.4	13.6	11.5	10.2	9.1
CZ	6.2	6.1	6.6	6.6	6.7	5.6	4.8	3.7	2.8	2.7
DE	4.5	5.3	4.9	5.4	5.0	4.4	3.7	3.4	3.1	:
DK	2.7	2.3	2.7	3.6	3.2	3.7	2.6	3.1	3.4	2.6
EE	9.0	8.7	9.4	7.6	6.2 ^b	4.5	4.7	4.1	3.8	3.3
EL	11.6	15.2	19.5	20.3	21.5	22.2	22.4	21.1	16.7	16.2
ES	4.9	4.5	5.8	6.2	7.1	6.4	5.8	5.1	5.4	4.7
FI	2.8	3.2	2.9	2.5	2.8	2.2	2.2	2.1	2.8	2.4
FR	5.8	5.2	5.3	4.9	4.8	4.5	4.4	4.1	4.7	:
HR	14.3	15.2	15.9	14.7	13.9	13.7	12.5	10.3	8.6	7.2 ^p
HU	21.6	23.4	26.3	27.8	24.0	19.4	16.2	14.5	10.1	8.7
IE	5.7	7.8	9.9	9.9	8.4	8.5	6.7	5.2	4.9	:
IT	7.4	11.1	14.5	12.3	11.6	11.5	12.1	10.1	8.5	:
LT	19.9	19.0	19.8	16.0	13.6	13.9	13.5	12.4	11.1	:
LU	0.5	1.2	1.3	1.8	1.4	2.0	1.6 ^b	1.2	1.3	:
LV	27.6	31.0	25.6	24.0	19.2	16.4	12.8	11.3	9.5	7.8
MT	6.5	6.6	9.2	10.2	10.3	8.5	4.4	3.3	3.0	3.6
NL	2.2	2.5	2.3	2.5	3.2	2.6	2.6 ^b	2.6	2.4	2.4 ^p
PL	14.2	13.0	13.5	11.9	10.4	8.1	6.7	5.9	4.7	3.6
PT	9.0	8.3	8.6	10.9	10.6	9.6	8.4	6.9	6.0	:
RO	30.5	29.5	31.1	29.8	25.9	22.7	23.8	19.7	16.8	14.5
SE	1.9	1.7	1.8	1.9	1.0	1.1	0.8	1.1	1.6	1.8
SI	5.9	6.1	6.6	6.7	6.6	5.8	5.4	4.6	3.7	2.6
SK	11.4	10.6	10.5	10.2	9.9	9.0	8.2	7.0	7.0	:
UK	4.8	5.1	7.8 ^b	8.3	7.4	6.1	5.2	4.1 ^b	4.6	:
EU-28	8.4	8.8	9.9	9.6	8.9	8.1	7.5	6.6	5.9	

Source: EU-SILC - Eurostat tab ilc_sip8.

Note: b - break in series, p – provisional.

Table A.3: Low work intensity (% of population aged 18-59)

	2010	2011	2012	2013	2014	2015	2016	2017	2018	2019
AT	8.4	9.1	8.2	7.9	9.2	8.4	8.7	8.6	7.7	7.8
BE	12.8	13.7	14.1	14.6	15.1	15.3	15.6	14.4	13.1	:
BG	6.8	9.8	11.0	11.3	11.2	11.0	11.2 ^b	10.4	8.7	9.1
CY	5.3	5.4	6.9	8.3	10.6	11.4	11.1	9.9	8.6	7.3
CZ	6.2	6.4	6.8	7.0	7.0	6.4	6.2	5.3	4.5	4.4
DE	11.9	11.3	10.3	10.3	11.1	10.6	10.5	10.1	9.6	:
DK	11.3	11.3	11.9	13.4	13.8	12.8	12.1	11.2	10.5	10.7
EE	9.2	10.3	9.9	8.9	7.8 ^b	7.1	6.5	6.4	5.8	6.2
EL	8.5	13.3	16.2	19.4	19.4	18.8	19.2	17.5	16.4	15.6
ES	10.7	13.3	14.4	16.0	18.2	16.6	15.9	13.8	11.6	11.7
FI	10.1	10.6	10.3	10.0	11.0	11.8	12.1	11.1	11.0	10.5
FR	10.1	9.7 ^b	8.9	8.7	10.3	9.0	8.8	8.4	8.3	:
HR	14.6	16.6	17.0	15.7	15.2	15.0	13.7	12.6	11.9	9.8 ^p
HU	11.2	12.2	12.5	13.1	12.1	8.9	7.8	6.3	5.7	5.0
IE	21.1	22.9	23.3	23.4	20.3	18.2	17.0	15.4	12.2	:
IT	11.4	11.4	11.7	12.3	13.0	12.7	13.9	12.9	12.4	:
LT	10.5	13.0	11.9	11.4	9.4	9.5	10.4	9.8	8.6	:
LU	6.3	6.9	6.8	7.3	6.7	6.7	7.8 ^b	7.9	9.5	:
LV	12.5	12.5	12.1	10.2	9.3	7.9	7.5	8.2	8.2	8.4
MT	8.9	8.6	8.6	8.5	9.1	8.8	7.0	7.0	5.3	4.9
NL	9.4	10.0	9.9	10.5	11.4	11.5	10.1 ^b	10.5	9.3	9.8 ^p
PL	8.5	8.1	7.9	8.1	8.1	7.9	7.3	6.7	6.5	5.6
PT	8.2	7.8	9.6	11.9	12.9	11.5	10.0	8.7	7.7	:
RO	8.4	7.8	8.4	7.9	7.5	7.9	8.1	7.3	7.5	6.1
SE	8.5	9.6	7.9	9.0	8.8	8.5	8.3	8.5	8.6	7.8
SI	7.9	8.5	8.8	9.1	10.1	8.6	8.7	7.2	6.5	6.2
SK	7.8	7.7	7.2	7.2	6.9	6.9	6.0	4.8	4.9	:
UK	12.0	10.7	11.5 ^b	11.8	11.2	11.0	10.6	10.2 ^{b,u}	8.3 ^u	:
EU-28	10.5	10.7	10.8	11.2	11.8	11.2	11.0	10.3 ^e	9.5 ^e	

Source: EU-SILC - Eurostat tab ilc_lvhl14.

Note: b - break in series, p - provisional, e - estimated, u - low reliability.

Table A.4: Poverty or social exclusion (%)

	2010	2011	2012	2013	2014	2015	2016	2017	2018	2019
AT	18.9	19.2	18.5	18.8	19.2	18.3	18.0	18.1	17.5	16.9
BE	20.8	21.0	21.6	20.8	21.2	21.1	20.9	20.6	20.0	:
BG	49.2	49.1	49.3	48.0	40.1 ^b	41.3	40.4 ^b	38.9	32.8	32.5
CY	24.6	24.6	27.1	27.8	27.4	28.9	27.7	25.2	23.9	22.3
CZ	14.4	15.3	15.4	14.6	14.8	14.0	13.3	12.2	12.2	12.5
DE	19.7	19.9	19.6	20.3	20.6	20.0	19.7	19.0	18.7	:
DK	18.3	17.6 ^b	17.5	18.3	17.9	17.7	16.8	17.2	17.0	16.3
EE	21.7	23.1	23.4	23.5	26.0 ^b	24.2	24.4	23.4	24.4	24.3
EL	27.7	31.0	34.6	35.7	36.0	35.7	35.6	34.8	31.8	30.0
ES	26.1	26.7	27.2	27.3	29.2	28.6	27.9	26.6	26.1	25.3
FI	16.9	17.9	17.2	16.0	17.3	16.8	16.6	15.7	16.5	15.6
FR	19.2	19.3	19.1	18.1	18.5	17.7	18.2	17.0	17.4	:
HR	31.1	32.6	32.6	29.9	29.3	29.1	27.9	26.4	24.8	23.3 ^p
HU	29.9	31.5	33.5	34.8	31.8	28.2	26.3	25.6	19.6	18.9
IE	27.3	29.4	30.1	29.9	27.7	26.2	24.4	22.7	21.1	:
IT	25.0	28.1	29.9	28.5	28.3	28.7	30.0	28.9	27.3	:
LT	34.0	33.1	32.5	30.8	27.3	29.3	30.1	29.6	28.3	:
LU	17.1	16.8	18.4	19.0	19.0	18.5	19.8 ^b	21.5	21.9	:
LV	38.2	40.1	36.2	35.1	32.7	30.9	28.5	28.2	28.4	27.3
MT	21.2	22.1	23.1	24.6	23.9	23.0	20.3	19.3	19.0	20.1
NL	15.1	15.7	15.0	15.9	16.5	16.4	16.7 ^b	17.0	16.7	16.5 ^p
PL	27.8	27.2	26.7	25.8	24.7	23.4	21.9	19.5	18.9	18.2
PT	25.3	24.4	25.3	27.5	27.5	26.6	25.1	23.3	21.6	:
RO	41.5	40.9	43.2	41.9	40.3	37.4	38.8	35.7	32.5	31.2
SE	17.7	18.5	17.7	18.3	18.2	18.6	18.3	17.7	18.0	18.8
SI	18.3	19.3	19.6	20.4	20.4	19.2	18.4	17.1	16.2	14.4
SK	20.6	20.6	20.5	19.8	18.4	18.4	18.1	16.3	16.3	:
UK	23.2	22.7	24.1 ^b	24.8	24.1	23.5	22.2	22.0 ^b	23.1	:
EU-28	23.8	24.3	24.8	24.6	24.4	23.8	23.5	22.4	21.8	

Source: EU-SILC - Eurostat tab ilc_peps01.

Note: b - break in series, p - provisional.

Table A.5: Great difficulty to make ends meet (%)

	2010	2011	2012	2013	2014	2015	2016	2017	2018	2019
AT	5.9	5.5	6.0	5.4	5.6	5.3	4.3	4.5	4.5	4.0
BE	7.7	8.8	8.3	8.8	7.9	8.6	9.3	8.6	8.1	8.8 ^{b,p}
BG	29.0	27.8	32.8	32.9	31.7 ^b	30.6	28.9 ^b	28.0	26.5	23.7
CY	23.3	26.3	22.3	32.1	32.1	32.0	29.4	22.2	20.7	16.9
CZ	8.4	8.7	9.3	9.1	9.3	7.8	7.1	7.4	4.5	3.3
DE	2.8	3.1	3.0	3.0	2.8	2.6	2.3	2.1	1.7	1.5
DK	3.7	4.0	3.0	4.6	4.4	3.5	3.2	3.4	3.5	3.2
EE	8.5	8.5	8.5	7.5	6.5 ^b	4.9	4.9	3.7	4.3	2.7
EL	24.2	25.6	35.0	39.6	39.5	38.2	40.6	39.9	38.2	37.7
ES	15.5	11.1	14.7	18.6	17.5	14.8	16.6	9.5	10.4	7.8
FI	2.4	2.6	2.3	2.2	2.7	2.5	2.3	2.3	2.3	2.1
FR	4.4	4.5	4.4	4.6	4.9	4.6	4.2	4.1	4.5	3.7 ^p
HR	18.3	19.7	22.1	26.3	25.2	22.7	20.4	15.5	14.1	12.0 ^p
HU	25.3	26.5	26.8	27.4	22.8	19.1	17.1	15.7	12.1	8.6
IE	15.2	14.7	17.4	17.4	17.9	14.9	12.2	8.7	7.2	:
IT	17.4	17.1	17.3	18.8	17.9	15.4	10.9	8.6	9.7	:
LT	12.0	11.5	12.9	9.6	8.2	6.8	6.9	7.1	5.5	3.0
LU	1.9	2.7	3.6	4.4	3.9	4.2	4.2 ^b	5.1	4.7	:
LV	23.5	24.0	21.8	25.4	18.6	15.4	12.4	13.5	10.3	7.8
MT	19.7	14.9	17.0	15.5	12.4	7.3	6.7	4.6	3.9	3.1
NL	3.8	3.3	3.9	3.8	4.3	3.3	3.0 ^b	3.2	2.2	2.8 ^p
PL	14.1 ^b	12.4	13.3	12.7	10.7	10.2	8.4	6.8	5.3	4.5
PT	20.3	19.2	21.9	24.8	23.3	20.6	17.0	15.2	13.3	11.1
RO	21.1	21.2	23.3	23.8	21.7	20.2	18.1	14.7	13.4	12.4
SE	3.6	4.2	3.8	3.6	3.8	3.2	3.1	2.9	3.5	3.3
SI	8.9	9.3	8.9	11.2	9.8	9.1	8.0	6.5	5.6	4.1
SK	11.5	10.7	11.6	13.3	12.6	11.7	10.1	8.1	8.4	9.4 ^p
UK	6.5	7.3	8.0	9.6	9.1	6.4	6.8	6.2 ^{b,u}	5.2 ^u	:
EU-28	10.6	10.2	11.2	12.2	11.4	10.0	9.1	7.7 ^e	7.3 ^e	

Source: EU-SILC - Eurostat tab ilc_mdes09.

Note: b - break in series, p - provisional, e - estimated, u - low reliability.

Table A.6: Total disposable income per capita – comparison of National Accounts and EU-SILC (EU-SILC/NA ratio)

	2004	2005	2006	2007	2008	2009	2010	2011	2012	2013	2014	2015	2016	2017
AT									0.79	0.86	0.84	0.85	0.86	0.84
BE	0.80	0.80	0.77	0.77	0.77	0.79	0.80	0.79	0.82	0.82	0.83	0.85	0.83	0.82
BG	0.00	0.00	0.51	0.69	0.70	0.73	0.71	0.63	0.67	0.74	0.77	0.70	0.78	0.74
CY	0.83	0.85	0.89	0.86	0.81	0.82	0.86	0.89	0.89	0.89	0.87	0.87	0.84	0.82
CZ	0.67	0.67	0.67	0.69	0.71	0.71	0.71	0.71	0.72	0.73	0.73	0.73	0.74	0.73
DE									0.81	0.81	0.00	0.83	0.83	0.84
DK	1.02	1.03	1.04	1.09	1.06	1.07	1.07	1.05	1.07	1.09	1.10	1.07	1.05	1.06
EE	0.69	0.72	0.74	0.76	0.75	0.79	0.76	0.76	0.81	0.82	0.84	0.84	0.88	0.87
EL	0.61	0.64	0.61	0.61	0.61	0.63	0.61	0.56	0.57	0.59	0.57	0.58	0.60	0.61
ES	0.64	0.64	0.67	0.69	0.79	0.80	0.78	0.77	0.79	0.77	0.78	0.77	0.77	0.78
FI	0.91	0.92	0.91	0.92	0.92	0.91	0.92	0.92	0.93	0.92	0.92	0.91	0.91	0.92
FR	0.74	0.73	0.70	0.83	0.84	0.85	0.85	0.86	0.87	0.87	0.88	0.89	0.87	0.86
HR	0.00	0.00	0.00	0.00	0.00	0.68	0.64	0.62	0.63	0.62	0.66	0.66	0.68	0.69
HU	0.56	0.59	0.57	0.58	0.61	0.61	0.64	0.62	0.61	0.62	0.62	0.62	0.62	0.62
IE							0.80	0.84	0.83	0.87	0.90	0.91	0.93	0.94
IT	0.70	0.69	0.70	0.70	0.71	0.74	0.75	0.74	0.75	0.75	0.74	0.75	0.76	0.76
LT	0.46	0.51	0.57	0.65	0.62	0.57	0.50	0.53	0.56	0.56	0.60	0.63	0.62	0.65
LU	0.82	0.85	0.86	0.85	0.86	0.85	0.83	0.87	0.84	0.82	0.80	0.87	0.91	1.00
LV	0.58	0.60	0.59	0.67	0.64	0.65	0.65	0.70	0.67	0.71	0.73	0.73	0.72	0.75
MT														
NL	0.84	0.86	0.88	0.90	0.91	0.91	0.90	0.90	0.90	0.89	0.90	0.93	0.94	0.95
PL	0.57	0.60	0.61	0.65	0.67	0.65	0.65	0.65	0.64	0.65	0.64	0.66	0.66	0.65
PT	0.65	0.64	0.65	0.64	0.63	0.63	0.63	0.62	0.62	0.63	0.64	0.65	0.65	0.64
RO	0.00	0.00	0.44	0.41	0.41	0.46	0.44	0.44	0.44	0.39	0.42	0.40	0.40	0.45
SE	0.91	0.88	0.87	0.88	0.91	0.90	0.91	0.92	0.91	0.90	0.91	0.89	0.89	0.88
SI	0.77	0.78	0.77	0.76	0.78	0.80	0.81	0.80	0.81	0.82	0.83	0.82	0.82	0.81
SK	0.56	0.61	0.62	0.60	0.62	0.64	0.64	0.68	0.63	0.63	0.60	0.58	0.57	0.58
UK	0.77	0.75	0.78	0.69	0.67	0.78	0.76	0.83	0.72	0.81	0.77	0.65	0.75	0.79

Source: Eurostat database - tab nasa_10_nf_tr and EU-SILC.

Table A.7: Poverty or social exclusion by age category in 2018 (% of age category)

	Total	0-17	18-64	65+	Ratio 0-17/65+
AT	17.5	21.6	17.1	14.5	1.5
BE	20.0	23.0	19.7	17.4	1.3
BG	32.8	33.7	28.3	45.1	0.7
CY	23.9	25.5	23.6	23.5	1.1
CZ	12.2	13.2	10.8	15.6	0.8
DE	18.7	17.3	19.0	19.0	0.9
DK	17.0	15.1	20.0	9.6	1.6
EE	24.4	17.9	19.2	47.4	0.4
EL	31.8	33.3	35.0	21.3	1.6
ES	26.1	29.5	27.6	17.6	1.7
FI	16.5	16.0	17.5	14.0	1.1
FR	17.4	22.9	17.9	9.9	2.3
HR	24.8	23.7	22.9	32.0	0.7
HU	19.6	23.8	20.4	13.3	1.8
IE	21.1	24.1	19.9	20.9	1.2
IT	27.3	30.6	29.0	20.2	1.5
LT	28.3	28.0	23.8	42.7	0.7
LU	21.9	23.5	23.5	12.1	1.9
LV	28.4	22.5	23.5	49.0	0.5
MT	19.0	22.8	15.8	26.7	0.9
NL	16.7	15.2	18.7	11.8	1.3
PL	18.9	17.2	19.6	18.1	1.0
PT	21.6	21.9	21.6	21.2	1.0
RO	32.5	38.1	30.7	32.8	1.2
SE	18.0	20.6	18.2	14.7	1.4
SI	16.2	13.1	16.0	20.1	0.7
SK	16.3	23.8	15.2	11.9	2.0
UK	23.1	28.9	21.6	21.2	1.4

Source: EU-SILC - Eurostat tab ilc_peps01.

Table A.8: Income poverty and great difficulty to make ends meet by age in 2018 (% of age category)

	Income poverty					Great difficulty to make ends meet				
	Total	0-17	18-64	65+	Ratio 0-17/65+	Total	0-17	18-64	65+	Ratio 0-17/65+
AT	14.3	19.2	13.0	13.9	1.4	4.5	6.2	4.7	2.3	2.7
BE	16.4	20.1	15.1	16.6	1.2	8.1	11.2	8.0	4.8	2.3
BG	22.0	26.6	18.2	29.2	0.9	26.5	29.1	24.0	31.5	0.9
CY	15.4	17.3	13.4	21.4	0.8	20.7	25.2	21.6	10.5	2.4
CZ	9.6	11.0	7.7	14.2	0.8	4.5	6.1	4.2	3.8	1.6
DE	16.0	14.5	15.7	18.2	0.8	1.7	1.6	1.8	1.5	1.1
DK	12.7	11.0	14.5	8.9	1.2	3.5	4.6	3.7	2.0	2.3
EE	21.9	15.2	16.4	46.3	0.3	4.3	4.8	3.8	5.2	0.9
EL	18.5	22.7	19.8	11.6	2.0	38.2	41.7	38.2	35.8	1.2
ES	21.5	26.8	21.8	15.6	1.7	10.4	12.2	10.9	7.5	1.6
FI	12.0	11.1	11.9	13.2	0.8	2.3	2.8	2.5	1.2	2.3
FR	13.4	19.9	12.8	8.3	2.4	4.5	6.4	4.8	1.9	3.3
HR	19.3	19.7	16.4	28.1	0.7	14.1	12.8	13.3	17.7	0.7
HU	12.8	13.8	13.4	9.8	1.4	12.1	14.9	12.1	8.7	1.7
IE	14.9	15.8	13.3	20.2	0.8	7.2	9.9	7.0	3.2	3.1
IT	20.3	26.2	20.5	15.3	1.7	9.7	11.4	10.2	7.2	1.6
LT	22.9	23.9	18.0	37.7	0.6	5.5	5.5	4.9	7.5	0.7
LU	18.3	22.7	18.4	12.1	1.9	4.7	5.1	5.3	2.2	2.3
LV	23.3	17.5	17.8	45.7	0.4	10.3	10.6	9.5	12.7	0.8
MT	16.8	21.4	13.3	25.4	0.8	3.9	5.4	3.7	3.2	1.7
NL	13.3	13.1	14.0	10.8	1.2	2.2	1.8	2.5	1.6	1.1
PL	14.8	13.0	15.2	15.5	0.8	5.3	3.7	5.5	6.6	0.6
PT	17.3	19.0	16.7	17.7	1.1	13.3	12.9	13.6	12.8	1.0
RO	23.5	32.0	21.2	22.8	1.4	13.4	15.0	12.5	14.9	1.0
SE	16.4	19.3	15.9	14.6	1.3	3.5	4.4	4.0	1.3	3.4
SI	13.3	11.7	12.3	18.3	0.6	5.6	5.0	5.6	6.1	0.8
SK	12.2	20.5	11.3	6.4	3.2	8.4	10.6	7.7	8.8	1.2
UK	18.6	23.5	16.3	20.4	1.2	5.2	8.1	5.4	1.5	5.5

Source: EU-SILC - Eurostat tab ilc_li02 for Income poverty; EU-SILC 2018 for Great difficulty to make ends meet (authors' computations).

Table A.9: Incidence of income poverty in three 4-year periods (%)

	2006-2009					2010-2013					2014-2017				
	Never	1x	2x	3x	4x	Never	1x	2x	3x	4x	Never	1x	2x	3x	4x
AT	74.7	11.2	6.5	4.1	3.5	75.1	8.6	6.1	3.8	6.5	77.4	6.6	5.8	4.1	6.1
BE	72.8	10.1	4.7	6.9	5.6	74.3	10.4	5.4	4.1	5.7	73.3	9.3	4.5	4.4	8.5
BG	64.3	11.8	11.3	6.5	6.2	71.7	7.7	4.9	5.4	10.2	64.8	10.9	6.7	7.0	10.6
CY	78.8	6.0	3.4	3.0	8.8	75.0	8.2	4.4	6.3	6.1	78.8	7.0	4.9	5.1	4.3
CZ	83.5	7.4	4.0	2.4	2.6	86.1	6.2	2.6	2.2	2.9	87.6	5.0	2.3	2.2	2.8
DK	81.6	7.6	6.6	3.2	1.0	76.7	10.7	5.0	3.8	3.8	81.7	6.5	2.7	5.3	3.8
EE	68.4	10.8	5.7	6.6	8.6	69.3	11.2	8.2	4.7	6.5	65.8	9.7	6.6	6.1	11.9
EL	58.9	14.4	8.3	8.0	10.4	59.5	14.6	9.5	7.7	8.7	64.4	10.9	8.2	6.5	9.9
ES	60.8	14.4	10.3	7.2	7.2	70.1	9.6	6.4	6.1	7.9	68.5	6.8	7.2	7.9	9.7
FI	80.3	7.0	5.2	3.2	4.3	82.1	6.3	3.2	2.8	5.6	83.5	5.7	3.7	2.7	4.3
FR	77.2	10.0	5.8	3.4	3.6	78.5	7.7	4.4	4.7	4.7	79.1	7.0	4.4	4.2	5.3
HR						67.2	9.4	7.1	6.4	9.9	69.4	7.8	6.4	5.7	10.8
HU	72.1	12.9	5.5	4.6	5.0	77.7	8.8	4.6	4.0	5.0	74.3	10.1	6.9	5.0	3.8
CH											79.2	8.4	5.2	3.3	3.8
IE						71.4	12.2	7.1	5.2	4.0	73.7	9.6	6.6	4.2	5.9
IS	81.6	8.9	4.1	3.2	2.1	85.7	8.6	2.6	1.4	1.7					
IT	69.3	8.7	6.9	6.2	8.9	69.5	9.0	6.8	6.3	8.5	70.9	6.7	7.0	5.1	10.3
LT	66.6	10.8	9.4	6.2	7.1	69.3	10.2	9.0	4.4	7.2	67.8	9.7	4.8	5.5	12.2
LU	79.3	6.5	4.2	3.5	6.5	74.2	9.3	5.0	5.1	6.3	71.2	12.1	5.7	6.3	4.8
LV	58.4	12.4	10.7	9.3	9.3	67.8	9.7	7.9	7.3	7.4	68.0	9.4	6.1	6.3	10.3
MT	73.3	11.6	5.9	4.6	4.5	75.0	9.1	4.4	5.2	6.4	74.0	7.5	6.4	4.3	7.8
NL	83.4	7.3	4.0	2.4	3.0	82.6	6.3	3.5	3.2	4.4	80.0	7.8	5.9	2.5	3.8
NO	80.0	8.6	4.9	2.7	3.8	85.2	5.2	2.5	3.4	3.7	84.7	6.5	3.2	2.1	3.7
PL	69.3	11.5	6.9	5.5	6.8	71.9	9.8	6.8	4.3	7.1	70.2	9.8	7.4	6.0	6.6
PT	69.8	9.6	9.1	3.8	7.7	68.1	11.9	5.2	6.1	8.7	70.2	8.0	5.7	5.5	10.6
RO						70.4	6.2	4.9	3.9	14.7	66.9	7.4	4.7	4.2	16.8
RS											55.9	12.4	10.5	9.5	11.6
SE	89.6	4.2	2.4	2.2	1.6	80.9	6.9	4.1	2.9	5.2	82.9	5.0	4.0	2.8	5.3
SI	82.3	5.4	4.0	2.9	5.4	86.7	4.4	2.5	1.8	4.6	82.6	5.3	2.5	3.7	5.9
SK	76.6	12.7	4.1	3.2	3.5	75.0	10.9	6.3	2.9	4.8					
UK	64.9	16.8	8.3	5.4	4.5	67.5	13.9	9.1	5.5	4.0	70.0	13.5	7.6	4.4	4.5

Source: longitudinal EU-SILC 2009, 2013, 2017, authors' computations.

Table A.10: Incidence of material deprivation in three 4-year periods (%)

	2006-2009					2010-2013					2014-2017				
	Never	1x	2x	3x	4x	Never	1x	2x	3x	4x	Never	1x	2x	3x	4x
AT	89.5	5.9	2.3	1.0	1.2	90.6	4.2	2.3	1.5	1.4	92.8	3.2	2.7	0.8	0.5
BE	86.9	7.0	3.2	1.8	1.1	89.3	4.7	3.7	1.2	1.1	89.2	4.9	3.0	1.4	1.5
BG	24.8	22.8	21.6	13.4	17.4	40.0	15.9	8.1	11.7	24.3	60.0	6.3	3.0	5.5	25.3
CY	80.6	11.4	4.7	1.7	1.7	69.2	15.9	8.9	3.4	2.7	71.6	15.1	8.6	3.6	1.1
CZ	85.4	5.9	3.7	3.0	2.0	88.8	5.4	2.4	1.5	1.8	92.1	4.1	1.5	1.1	1.1
DK	93.6	4.1	1.7	0.2	0.5	94.1	1.9	1.6	1.7	0.8	95.2	2.2	1.5	0.5	0.7
EE	86.8	8.0	3.1	1.3	0.8	82.8	8.6	3.6	2.8	2.3	87.3	6.4	3.9	1.6	0.9
EL	73.4	13.0	6.3	3.2	4.1	64.2	15.7	9.0	5.8	5.2	62.8	12.8	7.7	6.6	10.1
ES	93.6	4.4	1.4	0.5	0.2	89.9	6.3	2.5	1.1	0.2	87.1	6.5	3.1	2.5	0.8
FI	95.0	2.4	1.2	0.9	0.6	95.4	2.7	1.2	0.5	0.2					
FR	90.8	4.8	2.0	1.5	1.0	89.8	5.3	2.1	1.7	1.1	91.1	4.8	1.8	1.5	0.8
HR						72.7	9.6	5.4	4.8	7.4	75.4	12.2	5.0	3.2	4.3
HU	63.7	12.9	9.6	7.2	6.6	64.6	9.9	7.0	7.1	11.4	70.0	9.8	7.2	5.1	7.9
CH											98.9	0.9	0.0	0.2	0.1
IE						87.5	5.6	6.1	0.5	0.4	85.7	7.1	2.8	2.2	2.2
IS	96.7	2.5	0.3	0.5	0.0	95.2	4.1	0.2	0.3	0.2					
IT	87.6	6.5	2.8	1.9	1.2	75.6	12.4	6.9	3.6	1.4	76.2	13.1	6.7	2.8	1.2
LT	64.9	17.0	8.6	5.2	4.3	68.9	11.8	6.7	5.8	6.7					
LU	97.9	1.3	0.5	0.3	0.0	96.7	2.4	0.3	0.3	0.3	96.7	1.8	0.5	0.7	0.3
LV	55.9	16.0	11.9	7.0	9.2	54.6	16.2	10.4	9.9	8.9	74.1	12.0	6.4	3.2	4.3
MT	89.8	5.7	2.0	1.5	1.1	87.4	4.0	3.3	1.9	3.3	87.4	6.7	2.9	2.0	1.1
NL	97.4	1.9	0.4	0.2	0.1	94.9	2.6	0.9	1.4	0.1					
NO	95.5	2.6	0.9	0.5	0.4						98.2	0.5	0.3	0.5	0.5
PL	65.2	11.8	8.5	5.9	8.6	79.1	7.2	4.2	3.7	5.9	84.4	6.0	3.7	2.8	3.1
PT	83.9	6.3	3.7	3.4	2.7	79.2	10.4	4.4	3.2	2.8	83.2	7.0	3.4	3.5	2.9
RO	98.2	1.3	0.4	0.1	0.0	56.1	9.7	7.0	6.9	20.3	65.8	9.0	4.9	5.6	14.7
RS											58.9	16.3	9.7	7.6	7.4
SE						98.1	1.1	0.6	0.2	0.0	99.3	0.5	0.1	0.1	0.0
SI	88.5	6.5	2.9	1.4	0.6	87.7	6.7	3.3	1.8	0.5	88.2	6.5	2.3	1.1	1.8
SK	71.1	14.0	7.0	4.2	3.7	79.0	8.6	4.4	3.6	4.5					
UK	90.5	7.2	1.2	1.0	0.2	84.7	8.3	3.8	2.1	1.1					

Source: longitudinal EU-SILC 2009, 2013, 2017, authors' computations.

Table A.11: Incidence of great difficulty to make ends meet in three 4-year periods (%)

	2006-2009					2010-2013					2014-2017				
	Never	1x	2x	3x	4x	Never	1x	2x	3x	4x	Never	1x	2x	3x	4x
AT	90.4	6.8	2.4	0.2	0.2	87.0	7.2	3.1	2.3	0.5	88.9	5.9	3.2	0.8	1.2
BE	85.4	6.6	4.3	1.9	1.8	83.2	6.9	4.6	3.4	1.9	79.8	10.2	4.4	3.8	1.8
BG	40.4	20.9	19.1	10.8	8.8	52.0	14.2	10.6	9.5	13.7	61.8	5.6	4.1	5.7	22.8
CY	66.3	16.3	8.4	6.5	2.5	49.7	19.4	13.5	11.2	6.3	51.9	17.4	13.9	9.9	6.9
CZ	84.8	7.0	3.4	2.5	2.3	83.8	7.5	3.5	2.1	3.1	86.4	7.3	3.1	2.0	1.2
DK	94.2	4.0	1.6	0.2	0.0	93.9	2.3	2.6	0.1	1.1	88.4	6.6	2.5	1.0	1.4
EE	88.2	7.7	3.3	0.6	0.3	84.4	8.1	3.9	2.4	1.3	87.0	8.2	2.4	1.8	0.6
EL	61.4	14.7	8.5	7.8	7.6	51.0	13.5	11.5	14.6	9.4	35.2	16.3	17.3	12.8	18.3
ES	73.1	14.4	6.5	4.0	1.9	70.5	14.7	7.7	5.1	1.9	69.3	13.6	8.7	6.1	2.3
FI	95.2	3.5	1.2	0.1	0.0	95.0	3.1	1.3	0.4	0.1	95.6	2.8	0.9	0.5	0.2
FR	92.7	4.4	1.5	0.8	0.5	90.4	5.2	2.4	1.1	0.8	89.7	5.5	2.6	1.5	0.7
HR						61.2	17.3	3.9	7.7	9.8	60.0	17.6	10.3	6.8	5.3
HU	63.3	16.3	11.1	5.7	3.6	58.6	14.1	8.7	8.3	10.2	66.5	12.5	8.9	5.3	6.8
CH											93.4	4.7	1.1	0.6	0.2
IE						71.0	14.5	7.8	3.5	3.2	69.7	16.5	7.0	3.6	3.1
IS	86.2	8.1	3.3	1.5	0.9	74.5	12.1	4.8	5.2	3.4					
IT	69.1	14.2	8.6	4.6	3.4	65.6	15.0	9.8	5.6	4.0	73.5	12.7	8.2	3.8	1.8
LT	82.9	11.4	3.8	1.4	0.6	78.2	8.7	5.4	3.6	4.1	83.8	8.5	2.2	3.5	2.0
LU	95.3	3.0	0.8	0.9	0.0	92.2	4.8	1.6	1.1	0.3	91.1	5.4	1.9	0.8	0.9
LV	67.3	15.0	7.7	6.3	3.7	58.3	17.9	12.9	6.8	4.2	65.1	16.9	7.5	6.7	3.9
MT	69.4	17.8	7.3	4.2	1.2	69.9	10.8	8.0	6.0	5.3	83.0	10.1	4.4	1.9	0.5
NL	93.3	3.3	2.1	0.3	0.9	89.8	6.2	3.0	0.7	0.3	92.5	4.5	1.9	0.4	0.7
NO	94.1	3.5	1.5	0.5	0.4	95.3	3.4	0.9	0.2	0.1	94.8	2.6	2.0	0.1	0.5
PL	69.4	12.0	6.5	6.2	5.9	76.6	8.9	5.3	4.2	4.9	82.2	8.1	4.5	2.4	2.8
PT	60.9	18.1	9.4	5.7	5.9	57.1	15.6	11.7	9.0	6.6	62.2	17.0	8.2	6.3	6.4
RO						63.7	10.2	6.3	7.0	12.8	73.7	6.6	5.4	3.5	10.8
RS											35.9	25.2	17.5	13.1	8.3
SE	93.2	4.4	0.9	0.6	1.0	94.0	3.4	1.8	0.6	0.2	96.4	1.8	1.2	0.2	0.3
SI	84.9	9.7	3.5	1.2	0.7	81.6	10.5	4.2	2.3	1.5	81.0	10.1	5.1	2.5	1.2
SK	75.1	13.1	4.5	4.5	2.9	80.0	9.1	4.0	3.2	3.8					
UK	85.0	10.5	2.6	1.5	0.4	82.4	10.3	3.5	2.1	1.7	84.3	8.8	4.7	1.8	0.4

Source: longitudinal EU-SILC 2009, 2013, 2017, authors' computations.

Country abbreviations

AT	Austria
BE	Belgium
BG	Bulgaria
CH	Switzerland
CY	Cyprus
CZ	Czech Republic
DE	Germany
DK	Denmark
EE	Estonia
EL	Greece
ES	Spain
FI	Finland
FR	France
HR	Croatia
HU	Hungary
IE	Ireland
IS	Iceland
IT	Italy
LT	Lithuania
LU	Luxembourg
LV	Latvia
MT	Malta
NL	Netherlands
NO	Norway
PL	Poland
PT	Portugal
RO	Romania
RS	Serbia
SE	Sweden
SI	Slovenia
SK	Slovakia
UK	United Kingdom