

# Diclofenac-Induced Cytotoxicity in Cultured Carp Leukocytes

Monika NEMCOVA<sup>1,2</sup>, Jiri PIKULA<sup>1,2</sup>, Jan ZUKAL<sup>3,4</sup>, Veronika SEIDLOVA<sup>1,2</sup>

<sup>1</sup>Department of Ecology and Diseases of Zoo Animals, Game, Fish and Bees, University of Veterinary and Pharmaceutical Sciences Brno, Brno, Czech Republic, <sup>2</sup>Department of Zoology, Fisheries, Hydrobiology and Apiculture, Mendel University in Brno, Czech Republic, <sup>3</sup>Institute of Vertebrate Biology of the Czech Academy of Sciences v.v.i., Brno, Czech Republic, <sup>4</sup>Institute of Botany and Zoology, Masaryk University, Brno, Czech Republic

Received October 10, 2020

Accepted October 26, 2020

## Summary

Diclofenac is a drug commonly used in human and veterinary medicine for the treatment of diseases associated with inflammation and pain. Medicinal products enter waste and surface waters on an everyday basis and contaminate the aquatic environment. Fish are therefore permanently exposed to these chemicals dissolved in their aquatic environment. To simulate variable environmental conditions, the aim of our study was to examine adverse effects of diclofenac under different temperatures of cell incubation (18, 21, 24, 27 and 30 °C). Cytotoxic and -static effects of diclofenac in concentrations of 0.001 µg/ml, 0.01 µg/ml, 0.1 µg/ml, 1 µg/ml, 10 µg/ml and 100 µg/ml for the carp (*Cyprinus carpio*) cultured leukocytes were quantified using detection of lactate dehydrogenase released from damaged cells. Overall DCF cytotoxicity was relatively low and its impact was pronounced at higher temperature and DCF concentration. Cells growth inhibition is changing more rapidly but it is high mainly at the highest concentration from low temperature. DNA fragmentation was not detected in tested leukocyte cell line. CYP450 increased diclofenac cytotoxicity only at the highest concentration but at incubation temperatures 18 and 27 °C. Leukocyte viability is essential for immune functions and any change can lead to reduction of resistance against pathogens, mainly in cold year seasons, when the immune system is naturally suppressed.

## Key words

Fish • Immune system • Non-steroidal anti-inflammatory drug • Toxicity • Temperature variation • Environmental pollution

## Corresponding author

V. Seidlova, Department of Ecology and Diseases of Zoo Animals,

Game, Fish and Bees, University of Veterinary and Pharmaceutical Sciences Brno, Palackého tř. 1946/1, 612 42 Brno, Czech Republic. E-mail: seidlovav@vfu.cz

## Introduction

Human and wildlife health and disease are intricately interlinked (Forget and Lebel 2001, Zinsstag *et al.* 2011). Development and use of efficient drugs improves the quality of human and animal life. On the other hand, industrially produced medicinal products are mostly non-natural, hence, adverse effects from environmental drug residues may be a serious cause for concern (Arnold *et al.* 2013, Hrubá *et al.* 2019, Mezzelani *et al.* 2016). Pharmaceuticals can influence aquatic organisms as well as contaminate ground and drinking water sources and other parts of ecosystems.

Diclofenac, a non-steroidal anti-inflammatory drug (NSAID), is amongst the most widely prescribed medicines worldwide and, consequently, one of the most frequently detected compounds in waste and surface waters (McGettigan and Henry 2013, Schwaiger *et al.* 2004). It is used in the treatment of pain, physical disability in rheumatic diseases as well as for its anti-inflammatory and antipyretic effects (Kołodziejewska and Kołodziejczyk 2018). In general, diclofenac, as a non-selective cyclooxygenase (COX) inhibitor, acts on both types of COX, namely COX-2 synthesized during inflammatory processes (therapeutic effect) and COX-1 with physiological function in synthesis of prostaglandins, which are important for protection of gastrointestinal epithelial cells (Hawkey 2000, Laine

1996), for blood pressure balance, correct thrombocyte aggregation and some other cardiovascular system characteristics (Al-Saeed 2011, Grosser *et al.* 2006). Therefore, adverse effects are commonly associated with the above-mentioned systems (Al-Saeed 2011, Laine 1996). Importantly, however, detoxification and elimination pathways of xenobiotics including diclofenac are located in the liver and kidney, where diclofenac can be concentrated and/or metabolized by the enzyme complex of cytochrome P450 (CYP450) to form toxic metabolites (Boelsterli 2002, Shen *et al.* 1999, Tang *et al.* 1999). Nephro- (Hickey *et al.* 2001, Murray and Brater, 1993) and hepato-toxicity (Aithal and Day 2007, Helfgott *et al.* 1990) can be observed consequently.

The primary source of drugs and their metabolites in the environment are patients. The active substances and/or their metabolites are excreted in faeces and urine. First, pollutants contaminate wastewater treatment plants where they should ideally be eliminated. However, imperfectly captured micropollutants pose a risk because “treated” wastewater is released into the environment. Second, drugs used to treat animals can directly get into the soil with manure and later they may be flushed with rainwater. Expired drugs entering the cycle in the form of seepage from landfills is another source of pollution (Lonappan *et al.* 2016, Zuccato *et al.* 2000).

The dose, chemical structure and route of administration are important factors influencing the environmental burden of each biologically active substance (Daughton and Ruhoy 2013). Environmental studies revealed concentrations amounting up to a few hundred nanograms of diclofenac per liter of water. In the Czech Republic, the highest observed value of 1080 ng/l was detected in the Elbe river with relatively high flow rate of more than 60 m<sup>3</sup>/s. At the same time, significantly higher levels of diclofenac residues can be detected in smaller watercourses with low flow rate, rural localities with intensive agriculture, in rivers below wastewater treatment plants and in the lower parts of streams (Buser *et al.* 1998, Lacina *et al.* 2013, Marsik *et al.* 2017, Tixier *et al.* 2003, Ternes, 1998).

While diclofenac concentrations detected in water usually do not induce acute toxicity with lethal effects (Lonappan *et al.* 2016), it accumulates in fish organs in a concentration-dependent manner (Schwaiger *et al.* 2004). It was found that fish show abnormal behavior, respiratory distress, changes in biochemical and hematological parameters and pathological alterations in

the liver, kidney and gills suggestive of inflammatory and necrotic processes associated with exposure to diclofenac (Ajima *et al.* 2015, Hoeger *et al.* 2005, Schwaiger *et al.* 2004, Stepanova *et al.* 2013), resulting in general health impairment (Schwaiger *et al.* 2004).

The majority of ecotoxicology experiments were designed to examine effects of diclofenac at the level of whole fish organisms (Ajima *et al.* 2015, Hoeger *et al.* 2005, Schwaiger *et al.* 2004, Stepanova *et al.* 2013), maintaining a narrow range of aquarium water parameters including the temperature. Immune defences of non-homeothermic vertebrates are temperature-dependent (Heger *et al.* 2020, Morvan *et al.* 1998). While immunotoxicity of diclofenac in fish is still understudied (Schwaiger *et al.* 2004), fish cell cultures provide useful tools for experimental approaches with temperature variation. Here, we performed diclofenac toxicity testing using cultured carp leukocytes and predicted both higher cytotoxicity rates and proliferation inhibition at lower temperatures. We also aimed to obtain data applicable for environmental pollution risk evaluation of diclofenac in the common carp (*Cyprinus carpio*), an important aquaculture species.

## Materials and Methods

### *Cell line and chemicals*

We used common carp (*Cyprinus carpio*) leukocytes cell culture number 95070628 (Merck Sigma-Aldrich, Germany) for diclofenac toxicity testing. Following chemicals were used during cultivation and testing: culture medium Dulbecco's Modified Eagle Medium/Ham's F-12 (1:1), assay medium Dulbecco's Modified Eagle Medium (DMEM) w/o sodium pyruvate, bovine calf serum (BCS) 10 %, antibiotics (ATB) (penicillin 100 IU/ml and streptomycin 100 µg/ml, Biosera, Boussens, France), diclofenac sodium salt (Sigma-Aldrich, Germany), 1A2 Cytochrome P450 human expressed in *Pichia pastoris* (CYP450) (Merck, Sigma-Aldrich, Germany), lactate-dehydrogenase (LDH) activity assay kit (Roche Sigma-Aldrich, Germany), dimethyl sulfoxide (DMSO), phosphate saline buffer, and trypsin solution (Sigma-Aldrich, Germany).

### *Solutions for treatment of cultures*

After reduction of light intensity in the laboratory, diclofenac was solubilized in DMSO and diluted with DMEM w/o sodium pyruvate to obtain final testing concentrations of diclofenac. Two experiments

with different concentrations of diclofenac were performed (see Table 1). The tested concentration range started with 1 ng/ml based on the value detected in the Elbe river (Marsik *et al.* 2017). It can also be assumed that diclofenac concentrations in the aquatic environment can be higher than the observed values due to accumulation of residues in the environment (Marsik *et al.* 2017) and in organs and tissues of fish (Schwaiger *et al.* 2004). Moreover, higher tested concentrations were selected in order to induce distinct cytotoxic effects (cell killing versus growth rate inhibition), suggestive of the fact that leukocytes are more resistant to diclofenac than other cell types (Němcová, 2018).

#### Cytotoxicity assay

The number of injured cells was assessed through measuring intracellular lactate dehydrogenase leakage from damaged cells using LDH activity assay kit according to the manufacturer's instructions. Absorbance of product of reaction was measured at 490 nm using ELISA reader (Elx808, BioTek, USA). For calculation of cytotoxic and inhibition effects we used modified protocol according to Smith *et al.* (2011).

#### Detection of DNA fragmentation

After the cultured cell pellet was obtained by centrifugation (1000 rpm for 6 min) of the cell suspension

(the medium was removed and cells were detached from the cultivation surface using trypsin solution). DNA for detection of DNA fragmentation was isolated using NucleoSpin<sup>®</sup> Tissue (Macherey-Nagel GmbH & Co. KG, Dueren, Germany). Isolated DNA was then analyzed by electrophoresis in 2.5 % agarose gel (100 V for 90 min, 50 V for 50 min, 35 V for 50 min) after staining with DNA Stain G (SERVA, Heidelberg, Germany) and visualisation on a UV transilluminator (Ultra Lum Inc., Claremont, Canada).

#### Experiment 1: Influence of diclofenac sodium salt on carp leukocytes

Cells in 96-well plates (10 000 cells/well for 12 h, 8 000 cells/well for 24 and 48 h) were pre-incubated (Benchmark, myTemp<sup>™</sup> Mini CO<sub>2</sub>, USA) overnight in medium DMEM-F12 supplemented with 10 % BCS and 1 % ATB under humidified atmosphere of 5 % CO<sub>2</sub> at 27 °C. Then the medium was replaced with diclofenac-supplemented or control solutions (see Table 1). The treated cells were incubated (ESCO, CellCulture CO<sub>2</sub>, USA) in the dark under humidified atmosphere of 5 % CO<sub>2</sub> at five different temperatures of 18, 21, 24, 27 and 30 °C. To determine cytotoxicity, we detected lactate dehydrogenase released from damaged cells after 12, 24 and 48 h of exposure.

**Table 1.** Experimental design information

		Experiment 1							
DCF concentration	control with cells (0 µg/ml)	control blank (0 µg/ml)	test blank (100 µg/ml)	0.001 µg/ml	0.01 µg/ml	0.1 µg/ml	1 µg/ml	10 µg/ml	100 µg/ml
	*	*	*	c1	c2	c3	c4	c5	c6
DMSO concentration	not exceeding 0.5 %								
		Experiment 2							
		DCF concentration							
		DCF 0 µg/ml				DCF 100 µg/ml			
CYP concentration	CYP450 0 µg/ml	control with cells				*			
	CYP450 0.5 µg/ml	*				*			
	CYP450 5 µg/ml	*				*			
DMSO concentration	not exceeding 0.5 %								

DCF = diclofenac; DMSO = dimethyl sulfoxide; cytochrome = CYP

### Experiment 2: Influence of diclofenac metabolism in carp leukocytes on cytotoxicity

Cells in plates (8 000 cells/well in 96-wells plate for LDH assay or 50 000 cells/well in 6-wells plate for DNA isolation) were pre-incubated overnight in DMEM-F12 supplemented with 10 % BCS and 1 % ATB under humidified atmosphere of 5 % CO<sub>2</sub> at 27 °C. The medium was then replaced with test solutions (Table 1). The treated cells were incubated in the dark under humidified atmosphere of 5 % CO<sub>2</sub> at different temperatures of 18 °C (sub-optimal cultivation temperature, immune response initiated *in vivo*), 27 °C (optimal temperature for cultivation recommended for carp cell cultures by the supplier (Merck Sigma-Aldrich, Germany) and researchers (Chen *et al.* 2009, Liu *et al.* 2015) and 30 °C (temperature over the optimal cultivation temperature range). Cytotoxicity was then measured in 96-wells plates using detection of lactate dehydrogenase released from damaged cells after 24 exposure. The 6-wells plates were used for DNA isolation to detect DNA fragmentation after 48 h of exposure.

### Data analysis

Two parameters were calculated separately for any experimental well, i.e. percent killing (cytotoxicity) and percent inhibition according to Smith *et al.* (2011). Normal distribution of variables in each dataset was tested using the Shapiro-Wilk test. All results in Experiment 1 were obtained from five independent measurements but only two to four measurements were obtained during Experiment 2. The influence of categorical predictors (duration of cultivation, temperature of cultivation and diclofenac concentration) and their interactions to both dependent variables was calculated using Multi-Factorial ANOVA. Predictive desirability model was calculated according to Derringer and Suich (1980) with least square fitting. The relationship between cytotoxicity and inhibition values was analyzed by Pearson correlation coefficient. The difference between the CYP450 groups (Experiment 2) was calculated using one-way ANOVA followed by the Scheffe's post hoc test as there was no significant variance in homogeneity.  $P < 0.05$  was considered a significant difference. All analyses were performed in Statistica for Windows<sup>®</sup> 13.2 (StatSoft, Inc., Tulsa, OK, USA).

## Results

### Experiment 1

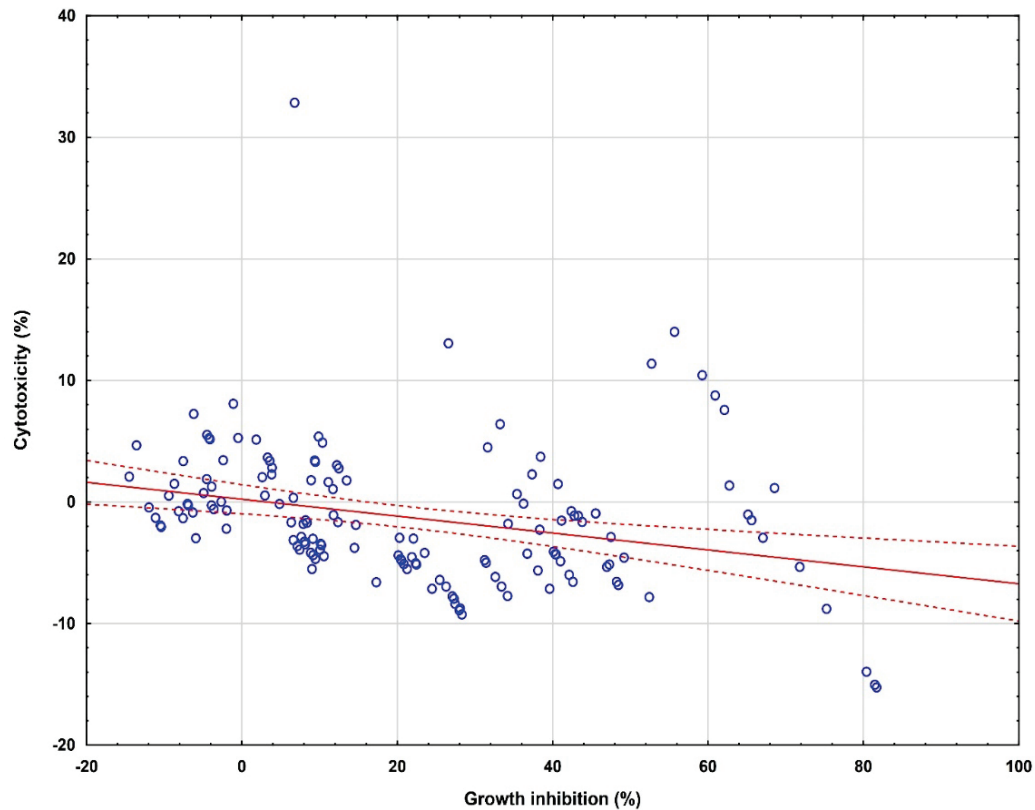
The longest incubation period (48 h) was excluded from the analysis because cytotoxicity results were extremely influenced by the increasing inhibition of cell growth (Fig. 1). This negative correlation was significant at all diclofenac concentrations except for 0.1 µg/ml ( $p = 0.069$ ) (Table 2) diclofenac cytotoxicity was generally low and does not occur within short periods of cell incubation and exposure (12 h). It was increased at temperatures of 24 °C and higher after 24 h of incubation reaching the highest average value of 21 % (diclofenac concentration 100 µg/ml at cultivation temperature 27 °C and 24 h) (Fig. 2). Factorial ANOVA confirmed the influence of all analyzed factors (time, temperature, concentration) but the impact of concentration was not dependent on the other two factors (Table 3). On the contrary, cellular growth inhibition was also significantly influenced by all parameters under study and the whole model explained more than 80 % of variability. Inhibition increased in response to increasing diclofenac concentrations right from the lowest incubation temperature (18 °C) after the shortest incubation time (12 h) (Fig. 3). The different response of both dependent variables was confirmed also by predictive desirability models (Fig. 4).

### Experiment 2

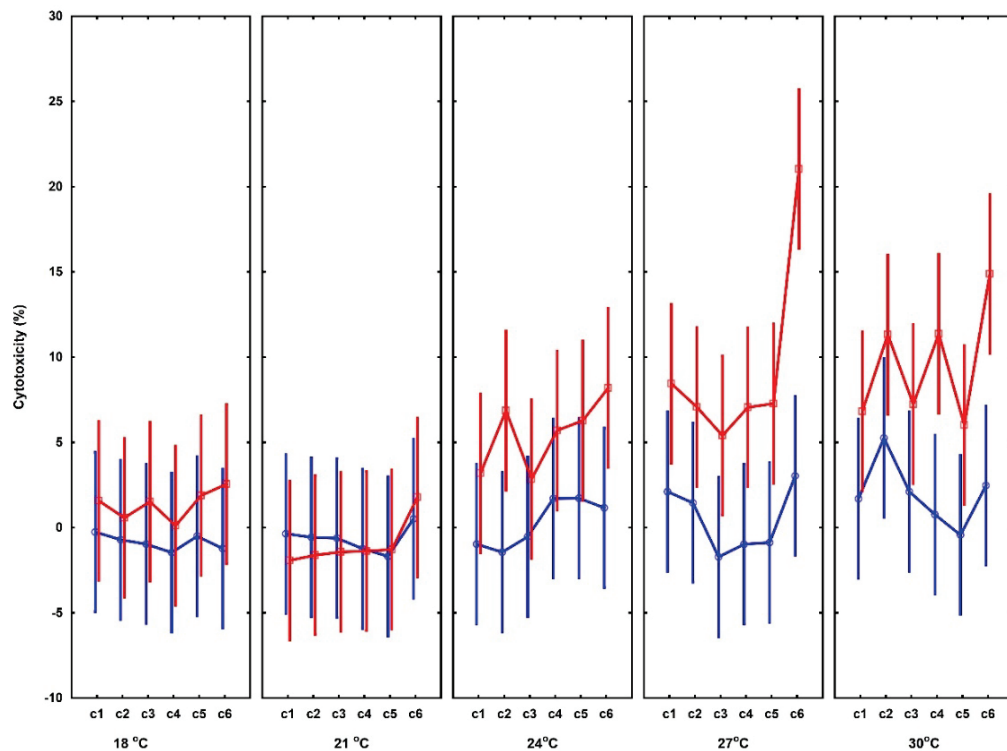
One-way ANOVA confirmed impact of CYP450 on carp leucocytes at the highest incubation temperature (30 °C) (Table 4). Cytotoxicity of both CYP450 concentrations (0.5 µg/ml and 5 µg/ml) significantly differed from the control group (post-hoc Scheffe's test).

**Table 2.** Pearson correlation two diclofenac-induced effects (cytotoxicity versus inhibition of growth) in carp (*Cyprinus carpio*) leukocyte cultivated *in vitro* in Experiment 1, after 48 incubation hours.

Diclofenac concentration	r	p
0.001 µg/ml	-0.563	0.003
0.01 µg/ml	-0.700	< 0.001
0.1 µg/ml	-0.370	0.069
1 µg/ml	-0.585	0.002
10 µg/ml	-0.548	0.005
100 µg/ml	-0.599	0.002



**Fig. 1.** The dependence of calculated percentage of cell death on growth inhibition level. The correlation between two observed cytotoxic effects (cell death versus inhibition of growth) caused by diclofenac in carp (*Cyprinus carpio*) leukocyte cultivated *in vitro* in Experiment 1, after 48 incubation hours at different temperatures (18, 21, 24, 27 and 30 °C). Cells were treated with various diclofenac concentrations (0.001 µg/ml, 0.01 µg/ml, 0.1 µg/ml, 1 µg/ml, 10 µg/ml and 100 µg/ml).

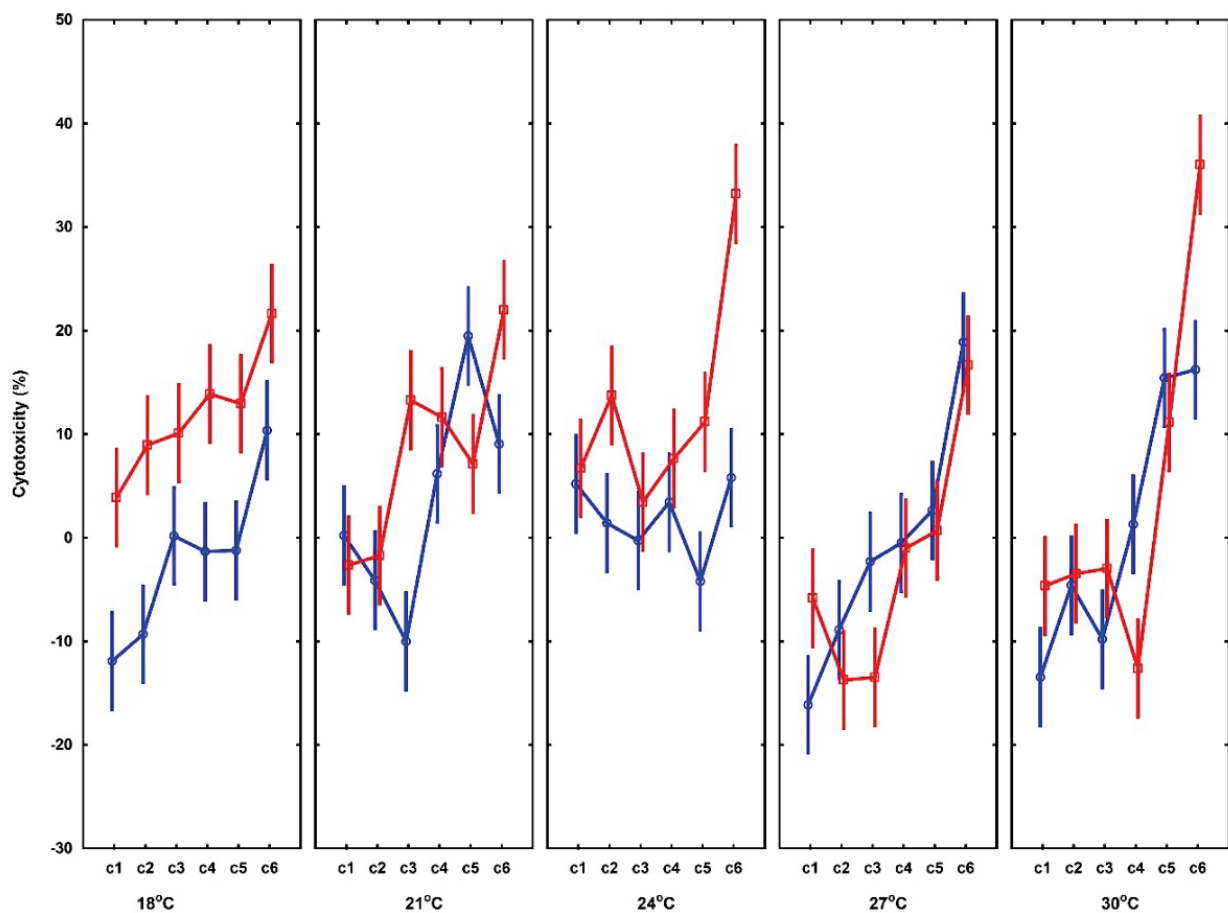


**Fig. 2.** Diclofenac-induced cytotoxicity in cultured carp (*Cyprinus carpio*) leukocytes. The percentage of killed carp leukocytes in Experiment 1, determined after 12 (blue line) and 24 (red line) hours of incubation at different temperatures (18, 21, 24, 27 and 30 °C). Cells were treated with various concentrations diclofenac (c1: 0.001 µg/ml, c2: 0.01 µg/ml, c3: 0.1 µg/ml, c4: 1 µg/ml, c5: 10 µg/ml and c6: 100 µg/ml).

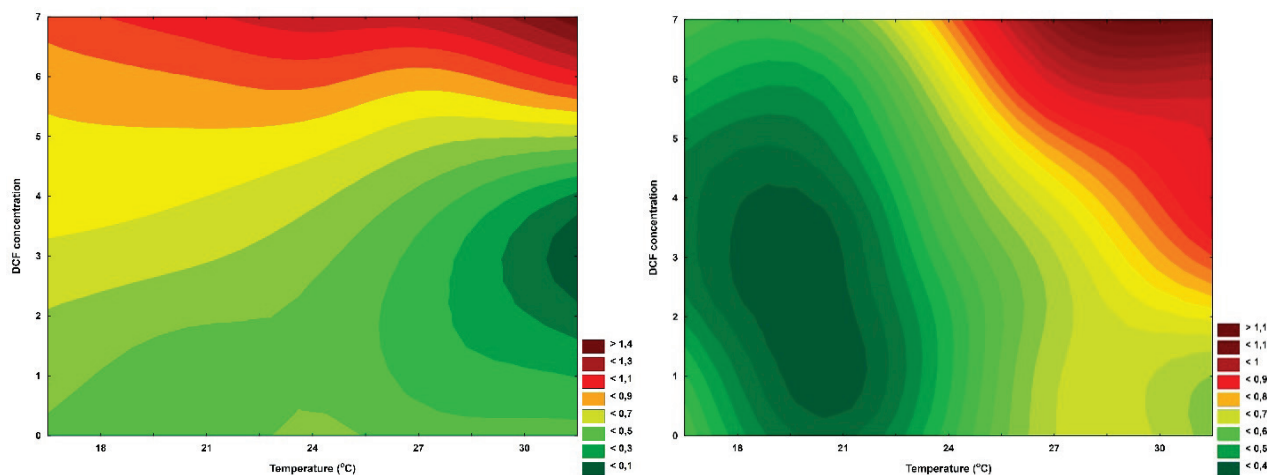
**Table 3.** Results of factorial analysis of variance (ANOVA) of diclofenac-induced cytotoxic and cytostatic effects.

Effect	DF	Cytotoxicity				Growth inhibition			
		SS	MS	F	p	SS	MS	F	p
Intercept	1	2040.08	2040.08	72.59	< 0.001	4077.66	4077.66	145.10	< 0.001
Time	1	1679.22	1679.22	59.75	< 0.001	2886.32	2886.32	102.70	< 0.001
Temp	4	1977.17	494.29	17.59	< 0.001	3127.83	781.96	27.83	< 0.001
DCF conc	5	533.21	106.64	3.79	0.003	18221.37	3644.27	129.67	< 0.001
Time *	4	864.10	216.03	7.69	< 0.001	2373.84	593.46	21.12	< 0.001
Temp *	5	235.16	47.03	1.67	0.142	1148.07	229.61	8.17	< 0.001
DCF conc *	20	585.31	29.27	1.04	0.414	5172.37	258.62	9.20	< 0.001
Time *	20	218.12	10.91	0.39	0.992	4387.2	219.36	7.81	< 0.001
Temp *	20								
DCF conc *	20								

Time = duration of cultivation; Temp = temperature of cultivation; DCF conc = diclofenac concentration.



**Fig. 3.** Diclofenac-induced cytostatic effect in cultured carp (*Cyprinus carpio*) leukocytes. The percentage provides information about growth inhibition level in carp leukocyte cell culture in Experiment 1, determined after 12 (blue line) and 24 (red line) hours of incubation at different temperatures (18, 21, 24, 27 and 30 °C). Cells were treated with various concentrations diclofenac (c1: 0.001 µg/ml, c2: 0.01 µg/ml, c3: 0.1 µg/ml, c4: 1 µg/ml, c5: 10 µg/ml and c6: 100 µg/ml).

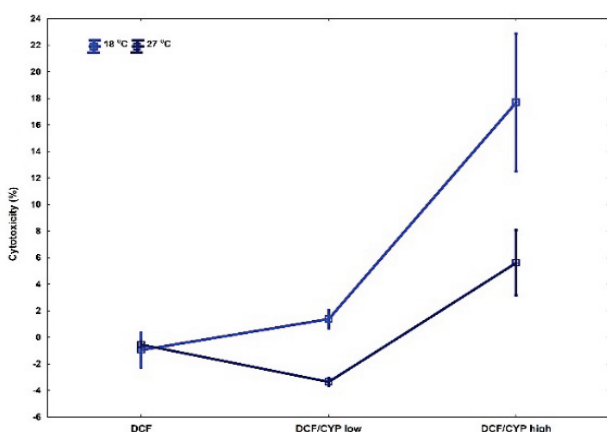


**Fig. 4.** Contour plots of the levels of overall response desirability for (a) diclofenac-induced cytotoxicity and (b) diclofenac-induced growth inhibition based on desirability profiling with the least squares fit. There is obvious difference in the response of analyzed parameters to the highest diclofenac concentration i.e. cytotoxic effect only at the highest temperatures but cytostatic effect at all temperatures.

**Table 4.** Results of one-way analysis of variance (ANOVA) of cytochrome P450 cytotoxic effect.

Temperature	F	p	Scheffe's post-hoc test		
			control vs low CYP	control vs high CYP	low CYP vs high CYP
18 °C	3.614	0.084	0.967	0.138	0.122
27 °C	13.539	0.003	0.073	0.176	0.003
30 °C	22.125	< 0.001	0.041	< 0.001	0.018

Control = cells treated only with 100 µg/ml of diclofenac; low CYP = cells treated with 100 µg/ml of diclofenac and 0.5 µg/ml cytochrome P450; high CYP = cells treated with 100 µg/ml of diclofenac and 5.0 µg/ml cytochrome P450.



**Fig. 5.** Cytotoxic effect caused by combination of diclofenac and cytochrome P450 in carp (*Cyprinus carpio*) leukocyte cultivated *in vitro*. The percentage of killed carp leukocytes in Experiment 2, determined after 24 hours of incubation at different temperatures (18 and 27 °C). Cells were treated with 100 µg/ml of diclofenac (DCF) in combination with different cytochrome P450 concentrations (CYP low: 0.5 µg/ml or CYP high: 5 µg/ml).

Therefore, we excluded the experimental group incubated at 30 °C from the subsequent analysis. Combined impact of diclofenac and CYP450 significantly differed at the higher concentration of CYP450. The average cytotoxicity reached the highest values for both incubation temperatures, 17.7 % and 5.6 %, respectively (Fig. 5). DNA fragmentation was not detected in the tested leukocyte cell line following exposure to diclofenac.

## Discussion

Leukocytes are an essential part of the immune system playing an important role in defence against pathogenic agents. The number of viable leukocytes is one of key factors for maintaining individual's health. Even a low decrease in viability of these cells can weaken the organism and intensify its susceptibility to disease (Beutler 2004, Desai *et al.* 2010, Neumann *et al.* 2001,

Turvey and Broide 2010). Therefore, our study aimed to investigate the response of cultured carp leukocytes (percentage of viable versus dead cells and growth inhibition) following exposure to diclofenac, a frequent aquatic environment contaminant around the world (Buser *et al.* 1998, Lacina *et al.* 2013, Marsik *et al.* 2017, Tixier *et al.* 2003, Ternes 1998). Moreover, toxicity of diclofenac and any other environmental pollutant may be enhanced by interaction with other anthropogenic xenobiotics or naturally-occurring toxins (Cleuvers 2004, Osickova *et al.* 2014, Paskova *et al.* 2011), posing a threat for wildlife species and whole ecosystems (Owa 2013).

While in fish exposed to diclofenac, the number of white blood cells at organismal level slightly increases (Ajima *et al.* 2015), similar to homeotherms (Lim *et al.* 2006, Martinez *et al.* 1999), little is known about diclofenac effects at the cellular level, despite existence of standardized ethically acceptable *in vitro* methods and fish-derived cell and tissue cultures which may provide scientifically correct targeted results and help understand toxicological processes *in vivo* (May *et al.* 2009, Orbach *et al.* 2017, Wilhelm *et al.* 2011). Our *in vitro* results show that cultured carp leukocytes after short-term (12 h) exposure to diclofenac proliferate slightly (Fig. 2), suggesting an initial response to the drug (Ajima *et al.* 2015), and the percentage of damaged cells during the first approximately 8 h (i.e. necrotic cell death) is low (Niles *et al.* 2009). In general, however, exposure to NSAIDs leads more to apoptosis than necrosis (Ajima *et al.* 2015, Chang *et al.* 2005, Nicotera *et al.* 1999, Niles *et al.* 2009). Therefore, cytotoxicity increases after medium-term (24 h) and longer exposure to diclofenac.

The original LDH-based cytotoxicity protocol grossly underestimates the proportion of dead cells under conditions with cell growth inhibition (Smith *et al.* 2011). We used, therefore, the modified protocol recommended by the above authors (Smith *et al.* 2011), differentiating two cytotoxic effects, i.e. cell death versus growth inhibition. According to this protocol, the calculated percentage of killed cells is still influenced by growth inhibition (Fig. 1). The equation used in the protocol is calculated with “low control values”, while non-exposed control cells natural mortality is high, because proliferation of non-exposed cells is significantly higher compared with inhibited test cells as having more cells means more natural deaths (as shown in experiments of longer-term duration 48 h, Fig. 1). In line with this finding, the LDH test as such is not quite relevant for experiments with exposures lasting 48 h and more.

The highest percentage of damaged cells was 21 %, yet, the number of leukocytes in the culture continuously decreased over time (Fig. 3 and 4). These results suggest that diclofenac inhibits cell proliferation (Chang *et al.* 2005, 2006) rather than induces cell destruction by necrosis or apoptosis. Importantly, at temperatures lower than the optimal cultivation temperature range of 24 - 28 °C recommended for carp cell cultures (Chen *et al.* 2009, Liu *et al.* 2015), proliferation of both exposed and non-exposed control cells is reduced by the low temperature (Carey *et al.* 2003, Stephenson, 1966). Likewise, many physiological processes are influenced by the body temperature corresponding with the ambient temperature in poikilotherm fish. Low temperatures suppress immune responses (Bly and Clem, 1991), cell proliferation, differentiation, tissue remodelling and generally growth rate (Harding *et al.* 2016, Neuheimer *et al.* 2011). Thus, renewal of leukocytes is generally slow at low temperatures.

Cytotoxic (Bort *et al.* 1999, Ponsoda *et al.* 1995, Syed *et al.* 2016) and cytostatic (van Leeuwen *et al.* 2011) effects were reported to be influenced by diclofenac metabolism mediated by CYP P450. Cytochrome P450 enzyme complex addition combined with exposure to diclofenac, however, had no significant influence on the performance of cultured carp leukocytes in the present study, probably due to the fact that blood leukocytes are not primarily active in detoxication of xenobiotics (Filkins 1971) and may not be able effectively utilize CYP P450 to produce cytotoxic metabolites. On the other hand, the combination of high concentration of CYP P450 and diclofenac had a significantly higher cytotoxic effect than other conditions tested in our experiment 2 (Fig. 5). At the surfeit of CYP P450, leukocytes start work with CYP P450 either as a catalyst of detoxifying reactions or the high level of CYP P450 acts as a xenobiotic (cf. temperature 30 °C, Table 4). Understandably, resistance/susceptibility of leukocytes and other organs/tissues-derived cells to adverse effects of xenobiotics, including diclofenac, will be variable under *in vitro* conditions (Němcová 2018). Likewise, *in vivo* studies show that cell damage by diclofenac-induced oxidative stress is significantly lower in blood compared with liver and/or gill cells (Islas-Flores *et al.* 2013). The oxidative stress is known to affect one of the pathways of leukocyte apoptosis. A possible pathological mechanism is associated with reactive oxygen species-induced DNA damage (Krammer *et al.* 2007, Krüger and Mooren



2014). While DNA fragmentation due to diclofenac-induced oxidative stress was not detected in our experiment with cultured carp leukocytes, oxidative stress induced by diclofenac coupled with massive DNA fragmentation as early as 24 h after exposure to diclofenac in other cell types (Hickey *et al.* 2001). Activated leukocytes develop a certain degree of apoptosis resistance to decrease their cell population damage (Krammer *et al.* 2007, Krüger and Mooren 2014).

To conclude, exposure to diclofenac resulted in reduction of leukocyte numbers through inhibition of cell proliferation and decreasing their viability *in vitro*. Environmental contamination by diclofenac represents, therefore, a burden for the immune system of fish. While cell culture experimental models are useful for identifying and understanding environmental pollution

problems in line with the 'Three Rs' concept of animal welfare and protection against cruelty, extrapolation of cellular effects for the whole organism *in vivo* is still a challenge (Abdelsalam *et al.* 2020, Kovacova *et al.* 2016).

### Conflict of Interest

There is no conflict of interest.

### Acknowledgements

This study/paper was supported by the project PROFISH CZ.02.1.01/0.0/0.0/16\_019/0000869. The project is financed by European Regional Development Fund in the Operational Programme Research, Development and Education and The Czech Ministry of Education, Youth and Sports.

### References

- ABDELSALAM EEE, BANDOUCHOVA H, HEGER T, KANOVA M, KOBELKOVA K, NĚMCOVÁ M, PIAČEK V, SEDLACKOVA J, SEIDLOVA V, VITULA F, PIKULA J: Polychlorinated biphenyl toxicity in the thyroid gland of wild ungulates: an *in vitro* model. *Acta Veterinaria Brno* 89: 151-162, 2020. <https://doi.org/10.2754/avb202089020151>
- AITHAL GP, DAY CP: Nonsteroidal anti-inflammatory drug-induced hepatotoxicity. *Clin Liver Dis* 11: 563-575, 2007. <https://doi.org/10.1016/j.cld.2007.06.004>
- AJIMA MN, OGO OA, AUDU BS, UGWOEGBU KC: Chronic diclofenac (DCF) exposure alters both enzymatic and haematological profile of African catfish, *Clarias gariepinus*. *Drug Chem Toxicol* 38: 383-390, 2015. <https://doi.org/10.3109/01480545.2014.974108>
- AL-SAEED A: Gastrointestinal and cardiovascular risk of nonsteroidal anti-inflammatory drugs. *Oman Med J* 26: 385, 2011. <https://doi.org/10.5001/omj.2011.101>
- ARNOLD KE, BOXALL ABA, BROWN AR, CUTHBERT RJ, GAW S, HUTCHINSON TH, JOBLING S, MADDEN JC, METCALFE CD, NAIDOO V, SHORE RF, SMITS JE, TAGGART MA, THOMPSON HM: Assessing the exposure risk and impacts of pharmaceuticals in the environment on individuals and ecosystems. *Biol Lett* 9: 1-4, 2013. <https://doi.org/10.1098/rsbl.2013.0492>
- BEUTLER B: Innate immunity: an overview. *Mol Immunol* 40: 845-859, 2004. <https://doi.org/10.1016/j.molimm.2003.10.005>
- BLY JE, CLEM LW: Temperature-mediated processes in teleost immunity: *in vitro* immunosuppression induced by *in vivo* low temperature in channel catfish. *Vet Immunol Immunopathol* 28: 365-377, 1991. [https://doi.org/10.1016/0165-2427\(91\)90127-X](https://doi.org/10.1016/0165-2427(91)90127-X)
- BOELSTERLI UA: Mechanisms of NSAID-induced hepatotoxicity. *Drug safety* 25: 633-648, 2002. <https://doi.org/10.2165/00002018-200225090-00003>
- BORT R, PONSODA X, JOVER R, GÓMEZ-LECHÓN MJ, CASTELL JV: Diclofenac toxicity to hepatocytes: a role for drug metabolism in cell toxicity. *J Pharmacol Exp Ther* 288: 65-72, 1999.
- BUSER HR, POIGER T, MÜLLER MD: Occurrence and fate of the pharmaceutical drug diclofenac in surface waters: rapid photodegradation in a lake. *Environ Sci Technol* 32: 3449-3456, 1998. <https://doi.org/10.1021/es980301x>
- CAREY HV, ANDREWS MT, MARTIN SL: Mammalian hibernation: cellular and molecular responses to depressed metabolism and low temperature. *Physiol Rev* 83: 1153-1181, 2003. <https://doi.org/10.1152/physrev.00008.2003>

- CHANG JK, WANG GJ, TSAI ST, HO ML: Nonsteroidal anti-inflammatory drug effects on osteoblastic cell cycle, cytotoxicity, and cell death. *Connective Tissue Res* 46: 200-210, 2005. <https://doi.org/10.1080/03008200500344025>
- CHANG JK, WU SC, WANG GJ, CHO MH, HO ML: Effects of non-steroidal anti-inflammatory drugs on cell proliferation and death in cultured epiphyseal-articular chondrocytes of fetal rats. *Toxicology* 228: 111-123, 2006. <https://doi.org/10.1016/j.tox.2006.08.028>
- CHEN J, ZHOU XQ, FENG L, LIU Y, JIANG J: Effects of glutamine on hydrogen peroxide-induced oxidative damage in intestinal epithelial cells of Jian carp (*Cyprinus carpio* var. Jian). *Aquaculture* 288: 285-289, 2009. <https://doi.org/10.1016/j.aquaculture.2008.10.053>
- CLEUVERS M: Mixture toxicity of the anti-inflammatory drugs diclofenac, ibuprofen, naproxen, and acetylsalicylic acid. *Ecotoxicol Environ Saf* 59: 309-315, 2004. [https://doi.org/10.1016/S0147-6513\(03\)00141-6](https://doi.org/10.1016/S0147-6513(03)00141-6)
- DAUGHTON CG, RUHOY IS: Lower-dose prescribing: minimizing "side effects" of pharmaceuticals on society and the environment. *Sci Total Environ* 443: 324-337, 2013. <https://doi.org/10.1016/j.scitotenv.2012.10.092>
- DERRINGER G, SUICH R: Simultaneous optimization of several response variables. *J Qual Technol* 12: 214-218, 1980. <https://doi.org/10.1080/00224065.1980.11980968>
- DESAI A, GROLLEAU-JULIUS A, YUNG: Leukocyte function in the aging immune system. *J Leucot Biol* 87: 1001-1009, 2010. <https://doi.org/10.1189/jlb.0809542>
- FILKINS JP: Comparison of endotoxin detoxification by leukocytes and macrophages. *Proc Soc Exp Biol Med* 137: 1396-1400, 1971. <https://doi.org/10.3181/00379727-137-35797>
- FORGET G, LEBEL J: An ecosystem approach to human health. *Int J Occup Environ Health* 7 (Suppl 2): S3-38, 2001.
- HARDING RL, HALEVY O, YAHAV S, VELLEMAN SG: The effect of temperature on proliferation and differentiation of chicken skeletal muscle satellite cells isolated from different muscle types. *Physiol Rep* 4: e12770, 2016. <https://doi.org/10.14814/phy2.12770>
- GROSSER T, FRIES S, FITZGERALD GA: Biological basis for the cardiovascular consequences of COX-2 inhibition: therapeutic challenges and opportunities. *J Clin Investig* 116: 4-15, 2006. <https://doi.org/10.1172/JCI27291>
- HAWKEY CJ. Nonsteroidal anti-inflammatory drug gastropathy. *Gastroenterology* 119: 521-535, 2000. <https://doi.org/10.1053/gast.2000.9561>
- HEGER T, ZUKAL J, SEIDLOVA V, NEMCOVA M, NECAS D, PAPEZIKOVA I, PIACEK V, ZAJICKOVA R, BANDOUCHOVA H, PIKULA J: Measurement of phagocyte activity in heterotherms. *Acta Veterinaria Brno* 89: 79-87, 2020. <https://doi.org/10.2754/avb202089010079>
- HELFGOTT SM, SANDBERG-COOK J, ZAKIM D, NESTLER J: Diclofenac-associated hepatotoxicity. *JAMA* 264, 2660-2662, 1990. <https://doi.org/10.1001/jama.264.20.2660>
- HICKEY EJ, RAJE RR, REID VE, GROSS SM, RAY SD: Diclofenac induced in vivo nephrotoxicity may involve oxidative stress-mediated massive genomic DNA fragmentation and apoptotic cell death. *Free Radical Biol Med* 31: 139-152, 2001. [https://doi.org/10.1016/S0891-5849\(01\)00560-3](https://doi.org/10.1016/S0891-5849(01)00560-3)
- HOEGER B, KÖLLNER B, DIETRICH DR, HITZFELD B: Water-borne diclofenac affects kidney and gill integrity and selected immune parameters in brown trout (*Salmo trutta* f. *fario*). *Aquatic Toxicol* 75: 53-64, 2005. <https://doi.org/10.1016/j.aquatox.2005.07.006>
- HRUBA H, ABDELSALAM EEE, ANISIMOV N, BANDOUCHOVA H, HAVELKOVA B, HEGER T, KANOVA M, KOVACOVA V, NEMCOVA M, PIACEK V, SEDLACKOVA J, VITULA F, PIKULA J: Reproductive toxicity of fluoroquinolones in birds. *BMC Vet Res* 15: 209, 2019. <https://doi.org/10.1186/s12917-019-1957-y>
- ISLAS-FLORES H, GÓMEZ-OLIVÁN LM, GALAR-MARTÍNEZ M, COLÍN-CRUZ A, NERI-CRUZ N, GARCÍA-MEDINA S: Diclofenac-induced oxidative stress in brain, liver, gill and blood of common carp (*Cyprinus carpio*). *Ecotoxicol Environ Safety* 92: 32-38, 2013. <https://doi.org/10.1016/j.ecoenv.2013.01.025>
- KOŁODZIEJSKA J, KOŁODZIEJCZYK M: Diclofenac in the treatment of pain in patients with rheumatic diseases. *Reumatologia* 56: 174, 2018. <https://doi.org/10.5114/reum.2018.76816>
- KOVACOVA V, ABDELSALAM EEE, BANDOUCHOVA H, BRICHTA J, HAVELKOVA B, PIACEK V, VITULA F, PIKULA J: Cytotoxicity of ketamine, xylazine and Hellabrunn mixture in liver-, heart- and kidney-derived cells from fallow deer. *Neuroendocrinol Letters* 37: 78-83, 2016.
- KRAMMER PH, ARNOLD R, LAVRIK IN: Life and death in peripheral T cells. *Nature Rev Immunol* 7: 532-542, 2007. <https://doi.org/10.1038/nri2115>

- KRÜGER K, MOOREN FC: Exercise-induced leukocyte apoptosis. *Exercise Immunol Rev* 20, 2014.
- LACINA P, MRAVCOVÁ L, VÁVROVÁ M: Application of comprehensive two-dimensional gas chromatography with mass spectrometric detection for the analysis of selected drug residues in wastewater and surface water. *J Environ Sci* 25: 204-212, 2013. [https://doi.org/10.1016/S1001-0742\(12\)60006-0](https://doi.org/10.1016/S1001-0742(12)60006-0)
- LAINÉ L: Nonsteroidal anti-inflammatory drug gastropathy. *Gastrointest Endosc Clin North America* 6: 489-504, 1996. [https://doi.org/10.1016/S1052-5157\(18\)30351-9](https://doi.org/10.1016/S1052-5157(18)30351-9)
- LIM M, LIM PL, GUPTA R., BOELSTERLI UA: Critical role of free cytosolic calcium, but not uncoupling, in mitochondrial permeability transition and cell death induced by diclofenac oxidative metabolites in immortalized human hepatocytes. *Toxicol Appl Pharmacol* 217: 322-331, 2006. <https://doi.org/10.1016/j.taap.2006.09.012>
- LIU YJ, DU JL, CAO LP, JIA R, SHEN YJ, ZHAO CY, XU PP, YIN GJ: Anti-inflammatory and hepatoprotective effects of *Ganoderma lucidum* polysaccharides on carbon tetrachloride-induced hepatocyte damage in common carp (*Cyprinus carpio* L.). *Int Immunopharmacol* 25: 112-120, 2015. <https://doi.org/10.1016/j.intimp.2015.01.023>
- LONAPPAN L, BRAR SK, DAS RK, VERMA M, SURAMPALLI RY: Diclofenac and its transformation products: environmental occurrence and toxicity - a review. *Environ Int* 96: 127-138, 2016. <https://doi.org/10.1016/j.envint.2016.09.014>
- MARSIK P, REZEK J, ŽIDKOVÁ M, KRAMULOVÁ B, TAUCHEN J, VANĚK T: Non-steroidal anti-inflammatory drugs in the watercourses of Elbe basin in Czech Republic. *Chemosphere* 171: 97-105, 2017. <https://doi.org/10.1016/j.chemosphere.2016.12.055>
- MARTINEZ LL, APARECIDA DE OLIVEIRA M, FORTES ZB: Influence of verapamil and diclofenac on leukocyte migration in rats. *Hypertension* 34: 997-1001, 1999. <https://doi.org/10.1161/01.HYP.34.4.997>
- MAY JE, XU J, MORSE HR, AVENT ND, DONALDSON C: Toxicity testing: the search for an in vitro alternative to animal testing. *Brit J Biomed Sci* 66: 160-165, 2009. <https://doi.org/10.1080/09674845.2009.11730265>
- MCGETTIGAN P, HENRY D: Use of non-steroidal anti-inflammatory drugs that elevate cardiovascular risk: an examination of sales and essential medicines lists in low-, middle-, and high-income countries. *PLoS Med* 10(2): e1001388, 2013. <https://doi.org/10.1371/journal.pmed.1001388>
- MEZZELANI M, GORBI S, DA ROS, Z, FATTARINI D, D'ERRICO G, MILAN M, BARGELLONI L, REGOLI F: Ecotoxicological potential of non-steroidal anti-inflammatory drugs (NSAIDs) in marine organisms: Bioavailability, biomarkers and natural occurrence in *Mytilus galloprovincialis*. *Marine Environ Res* 121: 31-39, 2016. <https://doi.org/10.1016/j.marenvres.2016.03.005>
- MORVAN C LE, TROUTAUD D, DESCHAUX P: Differential effects of temperature on specific and nonspecific immune defences in fish. *J Exp Biol* 201: 165-168, 1998.
- MURRAY MD, BRATER DC: Renal toxicity of the nonsteroidal anti-inflammatory drugs. *Ann Rev Pharmacol Toxicol* 33: 435-465, 1993. <https://doi.org/10.1146/annurev.pa.33.040193.002251>
- NĚMCOVÁ M: Bats cell culture: in vitro cytotoxicity model. Brno, 2018. University of Veterinary and Pharmaceutical Sciences Brno. Faculty of Veterinary Hygiene and Ecology. Master thesis.
- NEUHEIMER AB, THRESHER RE, LYLE JM, SEMMENS JM: Tolerance limit for fish growth exceeded by warming waters. *Nat Clim Change* 1: 110-113, 2011. <https://doi.org/10.1038/nclimate1084>
- NEUMANN NF, STAFFORD JL, BARREDA D, AINSWORTH AJ, BELOSEVIC M: Antimicrobial mechanisms of fish phagocytes and their role in host defense. *Dev Comp Immunol* 25: 807-825, 2001. [https://doi.org/10.1016/S0145-305X\(01\)00037-4](https://doi.org/10.1016/S0145-305X(01)00037-4)
- NICOTERA P, LEIST M, MANZO L: Neuronal cell death: a demise with different shapes. *Trends Pharmacol Sci* 20: 46-51, 1999. [https://doi.org/10.1016/S0165-6147\(99\)01304-8](https://doi.org/10.1016/S0165-6147(99)01304-8)
- NILES AL, MORAVEC RA, RISS TL: In vitro viability and cytotoxicity testing and same-well multi-parametric combinations for high throughput screening. *Curr Chem Genomics* 3: 33, 2009. <https://doi.org/10.2174/1875397300903010033>
- ORBACH SM, LESS RR, KOTHARI A, RAJAGOPALAN P: In vitro intestinal and liver models for toxicity testing. *ACS Biomater Sci Eng* 3: 1898-1910, 2017. <https://doi.org/10.1021/acsbiomaterials.6b00699>

- OSICKOVA J, BANDOUCHOVA H, KOVACOVA V, KRAL J, NOVOTNY L, ONDRACEK K, POHANKA M, SEDLACKOVA J, SKOCHOVA H, VITULA F, PIKULA J: Oxidative stress and liver damage in birds exposed to diclofenac and lead. *Acta Veterinaria Brno* 83: 299-304, 2014. <https://doi.org/10.2754/avb201483040299>
- OWA FD: Water pollution: sources, effects, control and management. *Medit J Soc Sci* 4: 65, 2013. <https://doi.org/10.5901/mjss.2013.v4n8p65>
- PASKOVA V, PASKEROVA H, PIKULA J, BANDOUCHOVA H, SEDLACKOVA J, HILSCHEROVA K: Combined exposure of Japanese quails to cyanotoxins, Newcastle virus and lead: Oxidative stress responses. *Ecotoxicol Environ Saf* 74: 2082-2090, 2011. <https://doi.org/10.1016/j.ecoenv.2011.07.014>
- PONSODA X, BORT R, JOVER R, GOMEZ-LECHON MJ, CASTELL JV: Molecular mechanism of diclofenac hepatotoxicity: Association of cell injury with oxidative metabolism and decrease in ATP levels. *Toxicol in vitro* 9: 439-444, 1995. [https://doi.org/10.1016/0887-2333\(95\)00035-7](https://doi.org/10.1016/0887-2333(95)00035-7)
- SCHWAIGER J, FERLING H, MALLOW U, WINTERMAYR H, NEGELE RD: Toxic effects of the non-steroidal anti-inflammatory drug diclofenac. Part I: histopathological alterations and bioaccumulation in rainbow trout. *Aqua Toxicol* 68: 141-150, 2004. <https://doi.org/10.1016/j.aquatox.2004.03.014>
- SHEN S, MARCHICK MR, DAVIS MR, DOSS GA, POHL LR: Metabolic activation of diclofenac by human cytochrome P450 3A4: role of 5-hydroxydiclofenac. *Chem Res Toxicol* 12, 214-222, 1999. <https://doi.org/10.1021/tx9802365>
- SMITH SM, WUNDER MB, NORRIS D A, SHELLMAN YG: A simple protocol for using a LDH-based cytotoxicity assay to assess the effects of death and growth inhibition at the same time. *PloS one* 6(11): e26908, 2011. <https://doi.org/10.1371/journal.pone.0026908>
- STEPANOVA S, PRASKOVA E, CHROMCOVA L, PLHALOVA L, PROKES M, BLAHOVA J, SVOBODOVA Z: The effects of diclofenac on early life stages of common carp (*Cyprinus carpio*). *Environ Toxicol Pharmacol* 35: 454-460, 2013. <https://doi.org/10.1016/j.etap.2012.09.011>
- STEPHENSON NG: Effects of temperature on reptilian and other cells. *Development* 16: 455-467, 1966. [https://doi.org/10.1016/0042-207X\(66\)91752-0](https://doi.org/10.1016/0042-207X(66)91752-0)
- SYED M, SKONBERG C, HANSEN SH: Mitochondrial toxicity of diclofenac and its metabolites via inhibition of oxidative phosphorylation (ATP synthesis) in rat liver mitochondria: Possible role in drug induced liver injury (DILI). *Toxicol in vitro* 31: 93-102, 2016. <https://doi.org/10.1016/j.tiv.2015.11.020>
- TANG W, STEARNS RA, BANDIERA SM, ZHANG Y, RAAB C, BRAUN MP, DEAN DC, PANG J, LEUNG KH, DOSS GA, STRAUSS JR, KWEI GY, RUSHMORE TH, CHIU SL, BAILLIE TA. Studies on cytochrome P-450-mediated bioactivation of diclofenac in rats and in human hepatocytes: identification of glutathione conjugated metabolites. *Drug Metab Dispos* 27: 365-372, 1999.
- TERNES TA: Occurrence of drugs in German sewage treatment plants and rivers. *Water Res* 32: 3245-3260, 1998. [https://doi.org/10.1016/S0043-1354\(98\)00099-2](https://doi.org/10.1016/S0043-1354(98)00099-2)
- TIXIER C, SINGER HP, OELLERS S, MÜLLER SR: Occurrence and fate of carbamazepine, clofibrac acid, diclofenac, ibuprofen, ketoprofen, and naproxen in surface waters. *Environ Sci Technol* 37: 1061-1068, 2003. <https://doi.org/10.1021/es025834r>
- TURVEY SE, BROIDE DH: Innate immunity. *J Allergy Clin Immunol* 125 (Suppl 2): S24-S32, 2010. <https://doi.org/10.1016/j.jaci.2009.07.016>
- VAN LEEUWEN JS, VREDENBURG G, DRAGOVIC S, TJONG TJ, VOS JC, VERMEULEN NP: Metabolism related toxicity of diclofenac in yeast as model system. *Toxicol Lett* 200: 162-168, 2011. <https://doi.org/10.1016/j.toxlet.2010.11.010>
- WILHELM I, FAZAKAS C, KRIZBAI IA: In vitro models of the blood-brain barrier. *Acta Neurobiol Exp* 71: 113-128, 2011.
- ZINSSTAG J, SCHELLING E, WALTNER-TOEWS D, TANNER M: From "one medicine" to "one health" and systemic approaches to health and well-being. *Preventive Vet Med* 101: 148-156, 2011. <https://doi.org/10.1016/j.prevetmed.2010.07.003>
- ZUCCATO E, CALAMARI D, NATANGELO M, FANELLI R: Presence of therapeutic drugs in the environment. *Lancet* 355(9217): 1789-1790, 2000. [https://doi.org/10.1016/S0140-6736\(00\)02270-4](https://doi.org/10.1016/S0140-6736(00)02270-4)