

A Comparison of Portal Vein Embolization With Poly(2-hydroxyethylmethacrylate) and a Histoacryl/Lipiodol Mixture in Patients Scheduled for Extended Right Hepatectomy

J. H. PEREGRIN¹, R. JANOUŠEK¹, D. KAUTZNEROVÁ¹, M. OLIVERIUS², E. STICOVÁ³, M. PŘÁDNÝ⁴, J. MICHÁLEK⁴

¹Department of Diagnostic and Interventional Radiology, Institute for Clinical and Experimental Medicine, Prague, Czech Republic, ²Department of Transplant Surgery, Institute for Clinical and Experimental Medicine, Prague, Czech Republic, ³Department of Clinical and Transplant Pathology, Institute for Clinical and Experimental Medicine, Prague, Czech Republic, ⁴Institute of Macromolecular Chemistry, Czech Academy of Sciences, Prague, Czech Republic

Received January 13, 2015

Accepted April 28, 2015

On-line June 5, 2015

Summary

To determine whether PHEMA [poly(2-hydroxyethylmethacrylate)] is suitable for portal vein embolization in patients scheduled to right hepatectomy and whether it is as effective as the currently used agent (a histoacryl/lipiodol mixture). Two groups of nine patients each scheduled for extended right hepatectomy for primary or secondary hepatic tumor, had right portal vein embolization in an effort to induce future liver remnant (FLR) hypertrophy. One group had embolization with PHEMA, the other one with the histoacryl/lipiodol mixture. In all patients, embolization was performed using the right retrograde transhepatic access. Embolization was technically successful in all 18 patients, with no complication related to the embolization agent. Eight patients of either group developed FLR hypertrophy allowing extended right hepatectomy. Likewise, one patient in each group had recanalization of a portal vein branch. Histology showed that both embolization agents reach the periphery of portal vein branches, with PHEMA penetrating somewhat deeper into the periphery. PHEMA has been shown to be an agent suitable for embolization in the portal venous system comparable with existing embolization agent (histoacryl/lipiodol mixture).

Key words

Extended right hepatectomy • Portal vein embolization • Embolization-induced left liver lobe hypertrophy

Corresponding author

J. Peregrin, Department of Diagnostic and Interventional Radiology, Institute for Clinical and Experimental Medicine, Vídeňská 1958/9, 140 21 Prague 4, Czech Republic. E-mail: Jan.Peregrin@seznam.cz

Introduction

Occasionally, extended right hepatectomy is the only therapeutic option for the treatment of hepatic malignancies. Its use is limited by the size of the future liver remnant (FLR) needed to maintain liver function at the necessary level. While there has been ongoing lively debate regarding the extent of resection, most authors accept that FLR volumes below 20-25 % of total liver volume (TLV) in patients with intact liver, and FLR volumes below 30-40 % in patients with chronic liver disease or those after extensive chemotherapy are unable to maintain the liver function needed for homeostasis (Abdalla *et al.* 2001, Azoulay *et al.* 2000, Zorzi *et al.* 2007). The current strategy used to increase the percentage of FLR is portal vein embolization in the region to be resected; however, the procedure has been shown to induce hypertrophy of the non-embolized hepatic segment. The first paper reporting induction of FLR hypertrophy following ligation of a portal vein

branch dates back to 1920 (Rous and Larimore 1920). The first to use this technique in clinical practice was Kinoshita (Kinoshita *et al.* 1986) embolizing portal vein branches in a liver segment to be resected thus inducing FLR hypertrophy. The technique has been accepted since, with a variety of embolization agents (van Lienden *et al.* 2013, Denys *et al.* 2012); however, there is no evidence that the outcomes with a particular agent would be clearly superior to those of other ones. Our study was designed to test embolization with PHEMA, an agent used in other branches of medicine (and indications), and to compare the outcome with that of a mixture of lipiodol (Lipiodol Ultra-fluide, Guerbet, France) and histoacryl a (n-butyl cyanoacrylate) (Histoacryl, B. Braun Medical, Germany) currently used for embolization in the Czech Republic.

A brief history of use of PHEMA in medicine

Large mesh size hydrogels derived from 2-hydroxyethyl methacrylate (HEMA) were developed in the early 1960s. Thanks to their properties (optical, biocompatibility, and availability) they were used to manufacture hydrogel soft contact lenses. The agent was approved by the US Food and Drug Administration (FDA) for this purpose in 1972 and also launched on the international market by Bausch&Lomb (Efron 2010, Horák 1992).

At present, HEMA-based hydrogels are used to produce contact lenses, intraocular lenses, implants for soft tissue reconstruction, dressings and bandages for rapid healing of common wounds as well as deep trophic defects and burns, plates for cell cultures and subsequent transplantation (keratinocytes), and carriers for tissue engineering (porous gels). There have been literature reports of their applications as blood detoxicators, artificial corneas, vitreous replacement, breast implants, hemodialysis membranes, swellable implants for the treatment of post-traumatic male incontinence, and so on (Institute of Macromolecular Chemistry 2003, Brynda *et al.* 1985).

PHEMA was used with success for renal tumor embolization as early as the 1990s. The result of a joint project of Institute for Clinical and Experimental Medicine (IKEM) with the Institute of Macromolecular Chemistry of the Czech Academy of Sciences was an agent based on PHEMA dissolved in 70 % ethanol and mixable with a non-ionic contrast agent up to a 1:1 ratio allowing monitoring of the course of embolization by fluoroscopy. PHEMA dissolved in alcohol and mixed with a contrast was applied (using 4-5 F catheters) as

a viscous liquid to shrink, upon contact with an aqueous medium (that is, also with blood), forming an indissoluble polymer (Fig. 1).



Fig. 1. Precipitation of PHEMA injected to water.

As PHEMA is biologically inert and stable, the effect of embolization can be expected to be a permanent one. The clinical aim of the project is to evaluate the use of PHEMA as an embolization agent for occlusion of the portal venous system in patients scheduled for liver resection with predicted too small FLR. Demonstration of the utility of PHEMA for the above procedure would allow us expand our options in the pre-operative prepping of patients with liver malignancies.

Material and Methods

Patients were divided into two groups, one with embolization using the traditional technique (histoacryl/lipiodol mixture), and the other one with PHEMA. Embolization was performed using PHEMA solutions (at a concentration of 10.95 mass % and kinematic viscosity of $82 \times 10^{-6} \text{ m}^2 \text{ s}^{-1}$) in 70 % ethanol supplied by GEL-MED International, Prague, Czech Republic (Group 1: 9 patients). As a rule, PHEMA was mixed at a 1:1 ratio with a conventional iodinated contrast agent (Optiray 350, Hennef, Germany). Group 2 was also made up of 9 patients receiving embolization with a histoacryl/lipiodol mixture at ratios of 8:1 to 10:1 (Table 1). All patients enrolled into the study were indicated for extended right hepatectomy and right portal vein embolization. The decision to indicate the patients for embolization was made during an interdisciplinary consultation when planning liver resection. The decision about the embolization agent to be used was not made by

Table 1. Group of patients characteristics: KT III – Klatskin tumor III, MCRCa – colorectal carcinoma metastasis, HCC – hepatocellular carcinoma, FLR hypertrophy – change of FLR after embolization in percents or ml.

Histoacryl / Lipiodol	Age (years)	Weeks post-E	TLV (ml)	FLR (ml)	FLR (%)	FLR post-E (ml)	FLR post-E (%)	Hypertrophy of FLR (%)	Reason for not performing resection
SV♂	53	16	1406	286	20.3%	457	32.5%	59.8%	
MV♀	68	4	1016	232	22.8%	250	24.6%	7.8%	
ZF♂	60	20	1224	150	12.3%	236	19.3%	57.3%	Insufficient FLR volume
LS♀	62	10	1776	309	17.4%	446	25.1%	44.3%	
AL♀	64	7	1145	300	26.2%	566	49.4%	88.7%	
HV♀	73	9	2131	621	29.1%	795	37.3%	28.0%	
PS♂	70	9	1897	307	16.2%	300	15.8%	-2.3%	Tumor generalization
JP♂	61	6	1308	426	32.6%	670	51.2%	57.3%	Tumor generalization
SK♂	66	5	2276	563	24.7%	616	27.1%	9.4%	
mean	64	10	1575	355	22.4%	482	31.4%	38.9%	
SD	6	5	430	145	6.1%	185	11.8%	28.4%	
PHEMA									
JH♂	68	6	1142	305	26.7%	348	30.5%	14.1%	
AK♀	60	10	1304	300	23.0%	360	27.6%	20.0%	
JM♂	54	7	1630	320	19.6%	410	25.2%	28.1%	
DC♀	65	3	1855	490	26.4%	570	30.7%	16.3%	
MP♂	45	5	1485	386	26.0%	492	33.1%	27.5%	
ZS♀	65	20	1248	176	14.1%	343	27.5%	94.9%	
JN♂	67	8	1529	214	14.0%	423	27.7%	97.7%	Tumor generalization
VH♂	54	10	1909	355	18.6%	395	20.7%	11.3%	Insufficient FLR volume
JM♂	71	6	1361	320	23.5%	410	30.1%	28.1%	
mean	61	8	1496	318	21.3%	417	28.1%	37.6%	
SD	8	5	250	86	4.7%	69	3.4%	31.9%	

regular randomization. When Principal Investigator was present in Cath-lab, PHEMA was used, otherwise histoacryl/lipiodol was employed, but the groups of patients did not differ in their main characteristics (Table 1). The embolization was performed using ipsilateral lobe puncture *via* retrograde catheterization and was finished after the right side of the portal venous system was completely filled with the embolization agent (followed by fluoroscopy). Based on the portal venous system anatomy, the physician performing the catheterization decided whether or not to embolize the fourth hepatic segment.

Embolization technique

Both materials were injected by 4-5 F catheters under fluoroscopic control (histoacryl/lipiodol mixture has higher density and therefore it is better “visible”). The filling of portal vein branches was followed by fluoroscopy and the injection was interrupted when the filling was complete to avoid reflux to the nontarget branches. PHEMA compared to histoacryl/lipiodol does not stick to the vessel wall or catheter and the injection could be easily repeated.

Amount of embolizing material used

In average 27 ml (15-40 ml) PHEMA plus the same amount of Optiray 350 were used, whereas 9.5 ml (8-13 ml) of histoacryl/lipiodol mixture 1:10-1:15 were given in average.

In most cases, the embolization tract was occluded with surgical gelatin (Geli Putty, Gelita Medical GmbH, Eberbach, Germany), less often using metal coils (William Cook Europe, Bjaeverskov, Denmark). After embolization, patients experiencing post-procedural pain received analgesics and/or other sedatives as needed.

Total liver volume (TLV) was calculated using CT volumetry with standard Volume software (Siemens, Erlangen, Germany) from 8-mm cross sections. In patients with definable liver tumor (i.e. non-functioning parenchyma), its volume was determined using the same volumetric program with the tumor volume subsequently subtracted from TLV.

As a rule, FLR volume was calculated using CT volumetry both prior to and after an average 8-10 weeks post-embolization, both in absolute numbers (ml) and as percentage: $FLR \% = 100 \times FLR / TLV$ (Table 1). Based on the volume parameters, some patients were subsequently scheduled for right liver lobe resection.

Histomorphological evaluation of the resected liver tissue was performed in 6 patients after embolization with a histoacryl/lipiodol mixture and in 7 patients after PHEMA embolization. In addition to tumors assessment each liver resected tissue was histologically assessed. At least four representative samples of non-neoplastic liver parenchyma were obtained from each resection specimen and the tissue was routinely processed by the standard paraffin technique after 4 % paraformaldehyde fixation. The sections (4 μ m) were stained with hematoxylin and eosin (HE), Sirius red, orcein, Schmorl's method, periodic acid-Schiff (PAS) reaction after diastase digestion, and Prussian blue.

Proliferative activity of hepatocytes was detected immunohistochemically with a primary mouse monoclonal antibody raised against the Ki-67 antigen (clone MIB-1, DAKO, Glostrup, Denmark). Additionally, TUNEL (Terminal deoxynucleotidyl transferase-mediated dUTP-biotin Nick End Labeling; Roche Diagnostics GmbH, Mannheim, Germany) assay was performed to detect apoptosis in paraffin-embedded sections. Quantitative assessment of proliferative activity and apoptosis was performed using an Olympus BX41 light microscope in at least 4500 (Ki-67) and 1500 (TUNEL) hepatocytes in randomly selected high-power fields (400 \times). Positive hepatocytes were defined as those with dark brown stained nuclei and the results were expressed as a proliferation and apoptotic index, e.g. a ratio (expressed as a percentage) of Ki-67 and TUNEL-positive hepatocytes to the total number of hepatocytes, respectively.

Results

Embolization was performed with angiographically documented right portal venous system occlusion in all cases (Figs 2 and 3). There were no procedure-related complications except for one case of bleeding managed conservatively. The outcome of embolization in terms of change of FLR volume calculated for both groups is shown in Table 1. No patient developed post-hepatectomy liver failure due to insufficient function of the remnant liver parenchyma. Three patients in the histoacryl/lipiodol group and two in the PHEMA group did not eventually have hepatectomy, one for insufficient FLR hypertrophy in each group, and the remaining ones for tumor generalization.

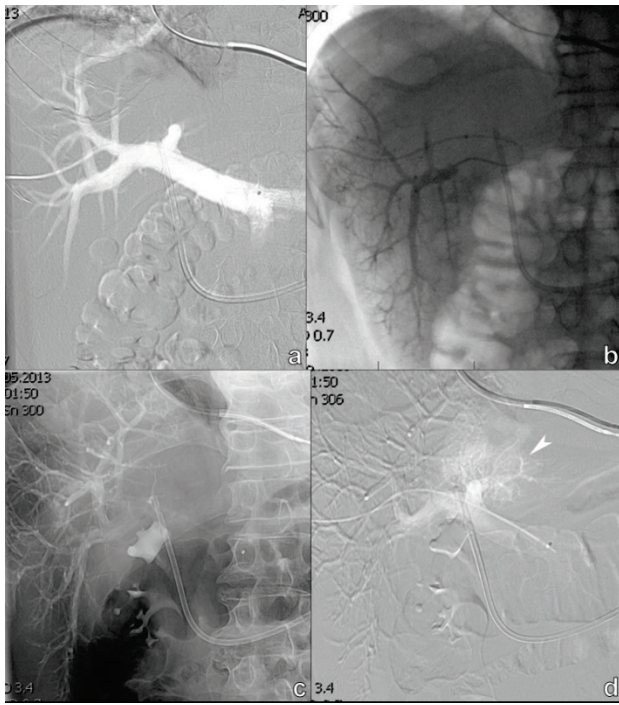


Fig. 2. Portal vein angiogram, catheter inserted percutaneously from the right side (a). Injection of contrast-labelled PHEMA into the portal vein (b). PHEMA fills the right-side portal venous system (c). Control angiogram documents occlusion of the right-side portal venous system, with only portal vein branches for the left lobe filling ◀ (d).



Fig. 3. Portal vein angiogram, catheter inserted percutaneously from the right side (a). Contrast injected into a retrograde accessed right portal vein (b). Control angiogram documents occlusion of the right-side portal venous system with the histoacryl/lipiodol mixture, with only portal vein branches for the left lobe filling (c). The histoacryl/lipiodol mixture fills the right-side portal venous system (d).

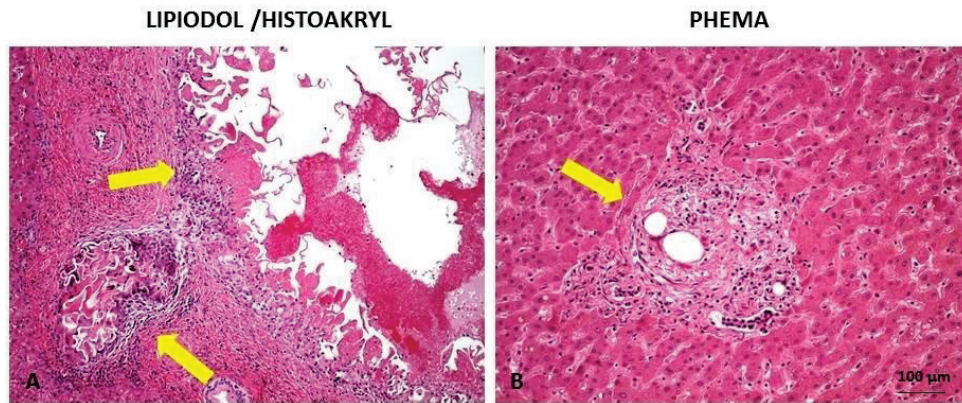


Fig. 4. Detail of a portal vein branch with embolized agent. The histoacryl/lipiodol mixture (A) occludes, compared with PHEMA (B), larger-caliber portal vein branches (arrows); a granulomatous foreign-body type reaction is evident around the embolized agent; however, the reaction is minimal after PHEMA embolization. HE, original magnification $\times 100$.

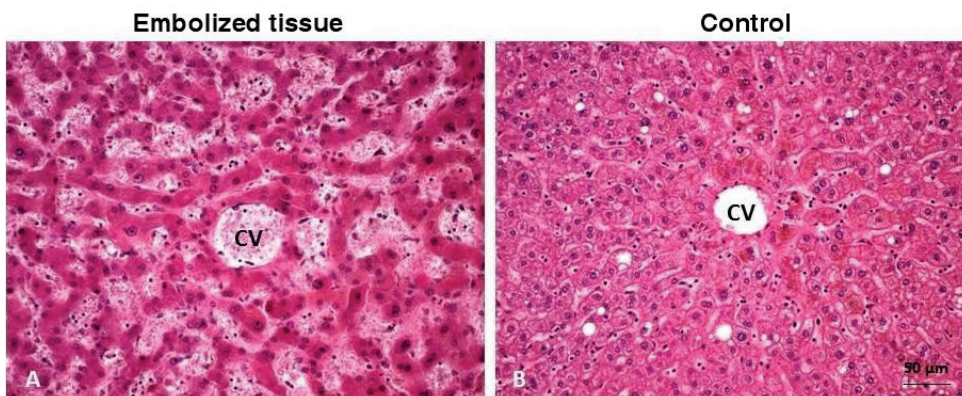


Fig. 5. Histomorphological changes in the liver parenchyma post-embolization. Sinusoidal dilatation and congestion in the centrilobular zone with mild atrophy of hepatocytes in the embolized tissue (A), compared to the non-embolized control (B). CV – central vein, HE, original magnification $\times 200$.

Histology

The histoacryl/lipiodol mixture occluded branches of portal veins $1608 \pm 1279 \mu\text{m}$ (range 230-3960 μm) in diameter and induced a marked foreign body giant-cell granulomatous reaction. PHEMA occluded peripheral smaller-caliber portal vein branches $90 \pm 74 \mu\text{m}$ (range 10-290 μm) in diameter. The giant-cell granulomatous reaction to PHEMA was minimal compared to the histoacryl/lipiodol mixture and it was expressed only focally (Fig. 4).

Centrilobular sinusoidal dilation and congestion with atrophy of hepatocytes in zone 3 of the liver lobule was detected in both groups of patients (Fig. 5). Furthermore, centrilobularly accentuated mixed micro- and macrovesicular steatosis involving 10 % and 50 % of hepatocytes in two patients in histoacryl/lipiodol group, and 10 %, 10 % and 20 % of hepatocytes in three patients after PHEMA embolization was found. Confluent necrosis of liver parenchyma was not observed in any of the patients.

Hepatocyte proliferative activity of the liver parenchyma embolized with either the histoacryl/lipiodol mixture or PHEMA was low, with a proliferation index of 0.59 % and 0.52 %, respectively. In the control non-embolized parenchyma, the index of proliferative activity was 1.17 %.

By contrast, the embolized liver parenchyma displayed a higher apoptotic index compared to the non-embolized tissue, being 5.78 % in the histoacryl/lipiodol mixture group, 8.83 % in PHEMA group, and 1.75 % in the control non-embolized group. In agreement with an earlier report (Harada *et al.* 1997), centrilobular accumulation of apoptotic hepatocytes after portal vein embolization was discernible in both groups of patients (not shown).

Discussion

Surgical removal of liver tumors, either primary or secondary, often remains the only therapeutic option giving patients some hope for long-term survival. For a long time, one of the limiting factors was the FLR volume. At the same time, it is a well-known fact that the risk of liver failure after resection as well as total post-procedural morbidity correlate with the liver parenchymal volume left after surgical resection (Ribero *et al.* 2007, Vauthey *et al.* 2000). The only clinical available technique for increasing the liver parenchymal volume to be left after resection (i.e. FLR) is occlusion of the portal

venous system in the area to be resected. The idea of portal vein embolization was developed in Japan in the late 1980s based on two publications. The first report documented observation of lobar atrophy of the liver due to cholangiocarcinoma invading the portal vein (Takayasu *et al.* 1986). The other report described lobar atrophy of the liver following portal vein branches embolization in an effort to limit intraportal spread of hepatocellular carcinoma (Kinoshita *et al.* 1986). At the same time, the authors documented an increase in the volume of the liver segments with patent portal veins over time.

The technique of portal vein embolization gained widespread acceptance, first in Japan, followed by Europe (de Baere *et al.* 1993) and North America (Abdalla *et al.* 2002). Essentially, the procedure involves occlusion of the portal vein branches in the liver segments to be resected thus completely rerouting blood flow through the portal vein to FLR branches (Denys *et al.* 2000). The actual mechanism of liver regeneration following portal vein embolization is a complex process not fully understood yet. Histologically, portal vein embolization induces atrophy of the embolized liver segment as the outcome of simultaneous hepatocyte apoptosis and atrophy. Non-embolized liver segments show intensive mitotic activity as early as days after portal vein embolization and, at the same time, hepatocyte hypertrophy reflected in an increase in FLR volume within weeks post-embolization (Harada *et al.* 1997, Fujii *et al.* 2000, Komori *et al.* 2006).

The relevant literature contains a number of papers reporting the use of various types of embolization agents or combinations thereof (surgical gelatin, metal coils, Amplatz occluder, ethanol, histoacryl mixed with lipiodol, thrombin). None of the above modalities has been shown to be superior to the other therapeutic options. While a combination of cyanoacrylate with lipiodol seems to induce the greatest FLR hypertrophy, the outcomes have never been statistically significant (Van Lienden *et al.* 2013, de Baere *et al.* 1993, Abulkuhr *et al.* 2008, Bent *et al.* 2009, Guiu *et al.* 2013). In our study, the alcohol-based PHEMA solution was chosen assuming it would reach the portal venous system distally, similar to the histoacryl/lipiodol mixture (as confirmed by histology – PHEMA penetrated even deeper in the portal vein branches than the histoacryl/lipiodol mixture; Fig. 4) and enhanced by the action of alcohol on the endothelium. The agent did indeed meet our expectations as we were able to occlude

properly the portal venous system with the occlusion, if performed appropriately in terms of its technical aspect, being permanent in all but one case resulting in FLR hypertrophy exceeding the original TLV value by more than 5 %. To confirm that deeper penetration of the agent means as well bigger FLR hypertrophy would require much bigger study. There were no complications related to the type of technique of embolization agent application; only in two cases was partial recanalization of the portal venous system documented, most likely due to incomplete embolization (in fact, of one portal vein branch in one PHEMA group patient and two portal vein branches in the histoacryl/lipiodol mixture group; he was a male patient (patient JP♂) not developing left lobe hypertrophy at all, Table 1). The rate of FLR is consistent with literary data although, needless to say, the outcomes are affected by the technique of FLR calculation or different indication criteria for embolization. No significant clinical or histological differences between the

two embolization materials were documented.

It can be thus reasonably concluded that PHEMA dissolved in alcohol is a suitable agent for portal venous system embolization in patients scheduled for extended hepatectomy, and is likely to be suitable also for other types of embolization. Large clinical studies are obviously warranted to support this claim.

Conflict of Interest

There is no conflict of interest.

Acknowledgements

Approved by the Ethics Committee of the Institute for Clinical and Experimental Medicine and Thomayer Hospital on 18 December 2009. The study was supported by project NT 11273-4/2010 awarded by the Internal Grant Agency and project 13-00939S of the Grant Agency of the Czech Republic.

References

- ABDALLA EK, HICKS ME, VAUTHEY JN: Portal vein embolization: rationale, technique and future prospects. *Br J Surg* **88**: 165-175, 2001.
- ABDALLA EK, BARNETT CC, DOHERTY D, CURLEY SA, VAUTHEY JN: Extended hepatectomy in patients with hepatobiliary malignancies with and without preoperative portal vein embolization. *Arch Surg* **137**: 675-680, 2002.
- ABULKHIR A, LIMONGELLI P, HEALEY AJ, DAMRAH O, TAIT P, JACKSON J, HABIB N, JIAO LR: Preoperative portal vein embolization for major liver resection: a meta-analysis. *Ann Surg* **247**: 49-57, 2008.
- AZOULAY D, CASTAING D, SMAIL A, ADAM R, CAILLIEZ V, LAURENT A, LEMOINE A, BISMUTH H: Resection of nonresectable liver metastases from colorectal cancer after percutaneous portal vein embolization. *Ann Surg* **231**: 480-486, 2000.
- BENT CL, LOW D, MATSON MB, RENFREW I, FOTHERINGHAM T: Portal vein embolization using a nitinol plug (Amplatzer vascular plug) in combination with histoacryl glue and iodinated oil: adequate hypertrophy with a reduced risk of nontarget embolization. *Cardiovasc Intervent Radiol* **32**: 471-477, 2009.
- BRYNDA E, ŠTOL M, CHYTRÝ V, CÍFKOVÁ R: The removal of residuals and oligomers from poly (2-hydroxyethylmethacrylate). *J Biomed Mater Res* **19**: 1169-1179, 1985.
- DE BAERE T, ROCHE A, VAVASSEUR D, THERASSE E, INDUSHEKAR S, ELIAS D, BOGNEL C: Portal vein embolization: utility for inducing left hepatic lobe hypertrophy before surgery. *Radiology* **188**: 73-77, 1993.
- DENYS AL, ABEHSERA M, LELOUTRE B, SAUVANET A, VILGRAIN V, O'TOOLE D, BELGHITI J, MENU Y: Intrahepatic hemodynamic changes following portal vein embolization: a prospective Doppler study. *Eur Radiol* **10**: 1703-1707, 2000.
- DENYS A, PRIOR J, BIZE P, DURAN R, DE BAERE T, HALKIC N, DEMARTINES N: Portal vein embolization: what do we know? *Cardiovasc Intervent Radiol* **35**: 999-1008, 2012.
- EFRON N: *Contact Lens Practice*. EFRON N (ed), Butterworth-Heinemann, Oxford, 2010, p. 474.
- FUJII Y, SHIMADA H, ENDO I, KAMIYAMA M, KAMIMUKAI N, TANAKA K, KUNISAKI C, SEKIDO H, TOGO S, NAGASHIMA Y: Changes in clinicopathological findings after portal vein embolization. *Hepatogastroenterology* **47**: 1560-1563, 2000.

-
- GUIU B, BIZE P, GUNTHERN D, DEMARTINES N, HALKIC N, DENYS A: Portal vein embolization before right hepatectomy: improved results using n-butyl-cyanoacrylate compared to microparticles plus coils. *Cardiovasc Intervent Radiol* **36**: 1306-1312, 2013.
- HARADA H, IMAMURA H, MIYAGAWA S, KAWASAKI S: Fate of the human liver after hemihepatic portal vein embolization: cell kinetic and morphometric study. *Hepatology* **26**: 1162-1170, 1997.
- HORÁK D: Use of poly(2-hydroxyethylmethacrylate) in medicine (in Czech). *Chem listy* **86**: 681-691, 1992.
- INSTITUTE OF MACROMOLECULAR CHEMISTRY AS CR: Hydrogel implant for urine incontinency treatment and its preparation (in Czech). CZ Patent No. 291150. 2002-12-11. 6. www.gelmed.cz 7. www.amicare.cz
- KINOSHITA H, SAKAI K, HIROHASHI K, IGAWA S, YAMASAKI O, KUBO S: Preoperative portal vein embolization for hepatocellular carcinoma. *World J Surg* **10**: 803-808, 1986.
- KOMORI K, NAGINO M, NIMURA Y: Hepatocyte morphology and kinetics after portal vein embolization. *Br J Surg* **93**: 745-751, 2006.
- RIBERO D, ABDALLA EK, MADOFF DC, DONADON M, LOYER EM, VAUTHEY JN: Portal vein embolization before major hepatectomy and its effects on regeneration, resectability and outcome. *Br J Surg* **94**: 1386-1394, 2007.
- ROUS P, LARIMORE LD: Relation of the portal blood to liver maintenance: a demonstration of liver atrophy conditional on compensation. *J Exp Med* **31**: 609-632, 1920.
- TAKAYASU K, MURAMATSU Y, SHIMA Y, MORIYAMA N, YAMADA T, MAKUUCHI M: Hepatic lobar atrophy following obstruction of the ipsilateral portal vein from hilar cholangiocarcinoma. *Radiology* **160**: 389-393, 1986.
- VAN LIENDEN KP, VAN DEN ESSCHERT JW, DE GRAAF W, BIPAT S, LAMERIS JS, VAN GULIK TM, VAN DELDEN OM: Portal vein embolization before liver resection: a systematic review. *Cardiovasc Intervent Radiol* **36**: 25-34, 2013.
- VAUTHEY JN, CHAOUI A, DO KA, BILIMORIA MM, FENSTERMACHER MJ, CHARNSANGAVEJ C, HICKS M, ALSFASSER G, LAUWERS G, HAWKINS IF, CARIDI J: Standardized measurement of the future liver remnant prior to extended liver resection: methodology and clinical associations. *Surgery* **127**: 512-519, 2000.
- ZORZI D, LAURENT A, PAWLIK TM, LAUWERS GY, VAUTHEY JN, ABDALLA EK: Chemotherapy-associated hepatotoxicity and surgery for colorectal liver metastases. *Br J Surg* **94**: 274-286, 2007.
-