



Workshop

5.—7. 4. 2022

**Fast, easy and elegant
solution of LIGHTSHEET
on confocal Leica
STELLARIS systems**

Registration

Register as soon as possible,
capacity is limited. Registration
is required!

If you want to have your own
samples, please provide this infor-
mation when registering.



More here: www.pragolab.cz
Login form [here](#).

Dear partners, users, friends,

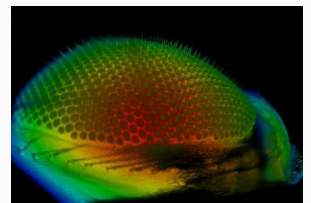
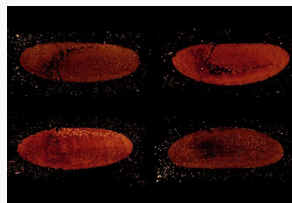
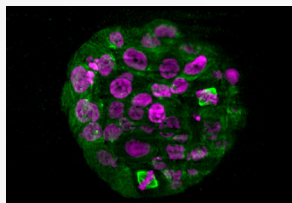
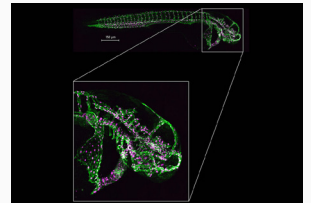
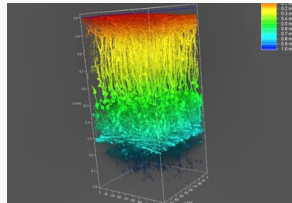
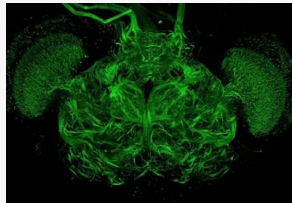
Pragolab s.r.o., Leica Microsystems and the Microscopic Core Facility
at the Institute of Physiology CAS and the Institute of Molecular Genetics
CAS invite you to the first Leica LIGHTSHEET workshop in the Czech Republic.

Is your focus on 3D cultures, unstained specimens, clearing organs, adherent
specimens, plant specimens such as roots, leaves, cells, or do you study
Drosophila melanogaster or fish model development? This unique workshop
focused on preparation, scanning and analysis is just for you.

You can look forward to practical demonstrations of Leica STELLARIS
systems with the DLS LIGHTSHEET module and a practical introduction of
the new Leica STELLARIS FALCON platform.

Where?

Research area Krč — Institute of Physiology CAS
and Institute of Molecular Genetics CAS
Vítězská 1083
142 20 Prague 4





Workshop

5.—7. 4. 2022

Fast, easy and elegant
solution of LIGHTSHEET
on confocal Leica
STELLARIS systems

Registration

Register as soon as possible,
capacity is limited. Registration
is required!

If you want to have your own
samples, please provide this infor-
mation when registering.



More here: www.pragolab.cz
Login form [here](#).

Detailed program of each sample:

1. Leica STELLARIS FALCON — Institute of Molecular Genetics CAS
Practical examples: Ivan Novotný

Introduction of Leica STELLARIS platform
HyD-S, tauSENSE, FLIM module
Practical examples for your samples

2. Leica STELLARIS FALCON DLS — Institute of Physiology CAS
Practical examples: Andreas Fulterer

Introduction of LightSheet DLS module for Leica STELLARIS
LightSheet technology and sample preparation
Practical examples for your samples

Practical examples (max. 5 person):

Place:
Institute of Molecular Genetics CAS
System:
STELLARIS FALCON

5. 4. Tuesday

09:30—11:30 UMG SLOT 1
13:00—15:00 UMG SLOT 2

6. 4. Wednesday

09:30—11:30 UMG SLOT 3
13:00—15:00 UMG SLOT 4

7. 4. Thursday

09:30—11:30 UMG SLOT 5
13:00—15:00 UMG SLOT 6

Place:
Institute of Physiology CAS
System:
STELLARIS FALCON LightSheet DLS

5. 4. Tuesday

09:30—11:30 FGU SLOT 1
13:00—15:00 FGU SLOT 2

6. 4. Wednesday

09:30—11:30 FGU SLOT 3
13:00—15:00 FGU SLOT 4

7. 4. Thursday

09:30—11:30 FGU SLOT 5
13:00—15:00 FGU SLOT 6