

Viability of Human Arterial Grafts Monitored by Comet Assay

Alexander PILIN¹, Ivan MAZURA¹, Radka LAINKOVÁ², Myroslav SALMAY², Pavel MĚŘIČKA³, Ondřej PECHA⁵, Libor JANOŮŠEK⁴, Tomáš GRUS², Rudolf ŠPUNDA², Jaroslav LINDNER², Miroslav ŠPAČEK²

¹Institute of Forensic Medicine and Toxicology, General University Hospital and First Faculty of Medicine, Charles University, Prague, Czech Republic, ²2nd Dept. of Surgery-Dept. of Cardiovascular Surgery, First Faculty of Medicine, Charles University and General University Hospital, Prague, Czech Republic, ³Tissue Bank, University Hospital Hradec Králové, Czech Republic, ⁴Technology Centre of the Czech Academy of Sciences, Department of Strategic Studies, Prague, Czech Republic, ⁵Department of Transplantation Surgery, Institute for Clinical and Experimental Medicine, Prague, Czech Republic

Received December 12, 2022

Accepted November 2, 2023

Summary

An analytical method for studying DNA degradation by electrophoresis after cell lysis and visualization of DNA fragments with fluorescent dye, comet assay, was used to evaluate the viability of the endothelial layer of human arterial grafts with the aim of identifying the procedure that will least damage the tissue before cryopreservation. Four groups of samples were studied: cryopreserved arterial grafts that were thawed in two different ways, slowly lasting 2 hours or rapidly for approx. 7 minutes. Arterial grafts that were collected as part of multiorgan procurement with minimal warm ischemia time. Cadaveric grafts were taken as part of the autopsy, so they have a more extended period of warm ischemia. The HeadDNA (%) parameter and others commonly used parameters like TailDNA (%), TailMoment, TailLength, OliveMoment, TailMoment to characterize the comet were used to assess viability in this study. The ratio of non-decayed to decayed nuclei was determined from the values found. This ratio for cadaveric grafts was 0.63, for slowly thawed cryopreserved grafts 2.9, for rapidly thawed cryopreserved grafts 1.9, and for multi-organ procurement grafts 0.68. The results of the study confirmed the assumption that the allografts obtained from cadaveric donors are the least suitable. On the other hand, grafts obtained from multiorgan donors are better in terms of viability monitored by comet assay.

Keywords

Arterial grafts • Cryopreservation • Cadaveric • Multiorgan procurement • Viability • Comet assay

Corresponding author

Miroslav Špaček, 2nd Dept. of Surgery-Dept. of Cardiovascular Surgery, First Faculty of Medicine, Charles University and General

University Hospital, U Nemocnice 2, Prague 2, 128 08, Czech Republic. E-mail: miroslav.spacek@vfn.cz

Introduction

Pathological changes in the arteries are among the most common causes of sudden death or a life-threatening condition, such as arterial obturation or rupture in the case of an aneurysm. Vascular surgery treats given conditions and often uses artificial vascular prostheses to replace blood vessels. However, e.g., in case of infection, the replacement must be explanted and replaced with another infection-resistant biological graft [1]. Such a solution uses a vascular allograft, i.e., allogeneic arterial transplantation. The demand for arterial replacements and the development of the program of cryopreserved grafts in the Czech Republic brings questions related to the preservation of the quality of grafts through the process of cryopreservation and subsequent thawing, as well as the search for qualitatively optimal sources of these grafts - i.e., the comparison of cadaveric donor grafts with grafts obtained as part of multiorgan procurement [2].

Different experiences with the postoperative course, especially after the implantation of cadaveric grafts, were the impetus for research aimed at comparing the properties of fresh grafts taken immediately during multiorgan sampling, cryopreserved in a tissue bank after

several years of storage in liquid nitrogen vapor after thawing, and cadaveric arterial allografts in terms of viability [3], morphology, physical properties, and thawing protocols. This work follows up with previous experimental transplantations in animals, which pointed to the essential factor of the length of ischemia of the graft for its quality and related rejection after its transplantation [4,5].

This study aimed at the use of the comet assay to evaluate the viability of the endothelium of human arterial grafts of the three groups mentioned. The Comet assay (also known as Single cell gel electrophoresis - SCGE) is an analytical method for studying DNA degradation by electrophoresis after cell lysis and visualization of DNA fragments with fluorescent dye [6-9]. Depending on various factors such as autolysis, toxic substances effect, tissue ischemia, and the time since thawing or collection, the nuclear DNA breaks down, and its fragments travel in the electric field, creating a comet image with a head and tail of various sizes. The assumption is that the degree of degradation of nuclear DNA indicates cell viability and, thus, the usability of the graft, i.e., preserving its properties

to the maximum extent.

Materials and Methods

We included arterial grafts explanted from the donors for the analysis as follows:

- Cryopreserved arterial grafts: 20 samples were thawed in two different ways, slowly lasting two hours or rapidly for approximately seven minutes. These grafts were taken as part of multiorgan procurement and frozen as soon as possible at -190 °C through cryopreservation.

- Arterial grafts that were collected as part of multiorgan procurement: 12 samples, i.e with minimal warm ischemia time.

- Cadaveric grafts: 15 samples. The grafts were taken as part of the autopsy, so they have a more extended period of warm ischemia.

Aorta or artery samples were stored in Custodiol® HTK Solution after collection or thawing until processing in the laboratory. The detailed characteristics of the examined grafts are in the Tables 1-3.

Table 1. Characteristics CRYOPRESERVED ARTERIAL GRAFTS n.1-20

Graft No.	Gender	Age	Graft Type	Storage (Months)	Thawing	Warm Ischemia	Cold Ischemia
1	F	56	thoracic aorta	81	slow	60 min	28 h 2 min
2	M	49	thoracic aorta	81	slow	60 min	28 h 40 min
3	M	27	thoracic aorta	82	fast	50 min	14 h 31 min
4	M	58	thoracic aorta	82	fast	60 min	21 h 50 min
5	F	56	thoracic aorta	81	slow	60 min	24 h 17 min
6	M	37	thoracic aorta	71	slow	1 h 35 min	24 h 40 min
7	M	38	thoracic aorta	72	fast	1 h 37 min	8 h 22 min
8	M	33	thoracic aorta	64	fast	60 min	12 h 5 min
9	M	27	abdominal aorta	81	slow	50 min	11 h 40 min
10	M	27	abdominal aorta	81	slow	50 min	11 h 50 min
11	F	36	a. femoralis	88	fast	1 h 47 min	9 h 3 min
12	M	61	a. femoralis	84	fast	60 min	17 h 18 min
13	M	65	thoracic aorta	72	slow	1 h 57 min	22 h 15 min
14	M	61	a. femoralis	84	slow	60 min	18 h 30 min
15	M	67	a. femoralis	84	slow	58 min	20 h 30 min
16	M	40	abdominal aorta	81	fast	1 h 40 min	15 h 48 min
17	M	40	abdominal aorta	81	fast	1 h 40 min	15 h 58 min
18	M	72	abdominal aorta	6	slow	60 min	19 h 47 min
19	F	73	abdominal aorta	2	fast	60 min	13 h 40 min
20	M	21	abdominal aorta	8	fast	38 min	6 h 57 min

Table 2. Characteristics of FRESHARTERIAL MULTIORGAN DONORS GRAFTS n.21-32

Graft No.	Gender	Age	Graft Type	Warm Ischemia	Cold Ischemia
21	M	45	thoracic aorta	60 min	12 h 18 min
22	M	67	thoracic aorta	60 min	20 h 45 min
23	M	52	thoracic aorta	60 min	39 h 38 min
24	M	23	thoracic aorta	90 min	2 h 15 min
25	M	23	a. iliaca	90 min	2 h 20 min
26	M	23	a. iliaca	90 min	2 h 25 min
27	F	44	thoracic aorta	60 min	21 h 03 min
28	F	44	a. femoralis	60 min	21 h 08 min
29	F	44	a. femoralis	60 min	21 h 13 min
30	M	76	thoracic aorta	50 min	41 h 1 min
31	M	76	a. femoralis	50 min	41 h 11 min
32	M	76	a. femoralis	50 min	41 h 21 min

Table 3. Characteristics of CADAVERIC ARTERIAL GRAFTS n.33-47

Graft No.	Gender	Age	Graft Type	Warm Ischemia	Cold Ischemia
33	M	46	a. iliaca	38 h 3 min	23 h 35 min
34	M	46	a. iliaca	38 h 3 min	23 h 40 min
35	M	46	abdominal aorta	38 h 3 min	23 h 45 min
36	M	76	thoracic aorta	63 h 45 min	23 h
37	M	70	thoracic aorta	36 h 23 min	22 h 50 min
38	M	70	abdominal aorta	36 h 28 min	22 h 50 min
39	M	76	a. iliaca	77 h 15 min	22 h 45 min
40	M	76	thoracic aorta	77 h 15 min	22 h 50 min
41	M	79	thoracic aorta	75 h 30 min	23 h 10 min
42	M	79	a. carotis	75 h 30 min	23 h 20 min
43	M	70	abdominal aorta	57 h 45 min	24 h 50 min
44	M	70	abdominal aorta	57 h 55 min	24 h 45 min
45	M	70	thoracic aorta	58 h 5 min	24 h 40 min
46	M	79	a. carotis	32 h 40 min	45 min
47	M	79	a. carotis	32 h 55 min	35 min

Vessels were first cut and thoroughly rinsed in HBSS Modified. The endothelium was obtained by peeling off an amount of endothelial layer of approximately 2×1 mm, which was gently cupped. Places without atherosclerotic changes were searched on vessels that were affected by atherosclerosis. A portion of the endothelial blank was incubated for 30 minutes in 3 ml of HBSS with Ca²⁺ and Mg²⁺ with the addition of collagenase I in a ratio of 1:2 at a temperature of 37 °C. After digestion, the visible remnants of the endothelial blank were removed, and the cell suspension was centrifuged for 15 minutes at 4000 rpm (Digital Minifuge Centrifuge). The incubation solution was aspirated, and the sedimented cells were

rinsed twice with HBSS and centrifuged again for 15 and 5 minutes at 4000 rpm (Digital Minifuge Centrifuge).

After thoroughly aspirating the HBSS after the last centrifugation, 10 µl of PBS and 40 µl of low melting agarose were added to the cell pellet. The suspension was gently mixed, and 2 × 5 µl of this mixture was then dropped onto an NMA-coated microscope slide prewarmed to 37 °C. The endothelium suspension was processed by the alkaline comet test method. Briefly, we present the procedure: after dropping the cell suspension mixture in low-melting agarose onto microscope slides and covered with coverslips, the preparation was cooled on ice. When the LMA had solidified, the coverslips were

torn off, and the preparation was placed in histological cuvettes with lysis solution for 1 hour at a temperature of 4 °C. The unfolding phase of DNA followed after lysis in the electrophoretic buffer for 20 minutes at laboratory temperature.

Electrophoresis was performed in a BIO-RAD Sub-Cell GT, PowerPac, at 25 volts, 300 mA for 20 minutes. Due to the heating of the electrolyte (avoidance of gradual heating of the low melting agarose), the electrophoresis was performed in the refrigerator at a temperature of 4 °C. After electrophoresis, and the gels were briefly rinsed in neutralization buffer and stained with 1-2 µl of SYBR Gold staining solution. Preparations were viewed in an Axiomat fluorescence microscope, Carl Zeiss, with a 450-490/520 nm excitation/emission filter at 200× magnification. The resulting comets were photographed with a Lucia QI825 camera and evaluated with the Lucia Comet Assay Analysis software (Laboratory Imaging s.r.o., Prague)

Used chemicals

Collagenase I: Sigma-Aldrich, PN SCR103); DABCO: ROTH, PN 0718.1; DMSO: Sigma-Aldrich, D4540; EDTA disodium: Sigma Aldrich, PN E5513; Glycerine: Roth, PN 7533.1; HCL: LACH:NER, PN UN1789; KCL: Sigma-Aldrich, PN P5405; LMA: Sigma-Aldrich, PN A9414; NMA: Sigma-Aldrich, PN A9539; Na₂HPO₄: Sigma-Aldrich, PN S5136; SDS: Amresco, PN 0227; NaOH: Penta, PN 15760-31000; SYBR™ Gold Nucleic Acid (10,000X Concentrate in DMSO, Thermo Fisher Scientific PN: S11494); TrisHCL: Amresco, PN 0234; Trisma base: Sigma-Aldrich 93362; Triton: ROTH, 3051.4

Used Software

Lucia Comet Assay Analysis software (Laboratory Imaging s.r.o., Prague, CZ); Excel, Microsoft; STATA 16 SWInstruments: Digital Minifuge Centrifuge GDC006, ES; Hank's Balanced Solution Modified with calcium, with magnesium without phenol red (Sigma-Aldrich, PN 55037C)

Statistical analysis

Descriptive statistics and ICC (intraclass correlation) estimates were conducted using STATA 16 [10] statistical package. Within-level and between-level covariance matrices were estimated using the lavaan library [11] in R. The results were considered significant if $p < 0.05$.

Results

Present data were hierarchically structured. Nuclei at level-1 (within-level) were nested within samples at level-2 (between-level). The degree of dependency in data was measured by the intraclass correlation coefficient ICC. The values of ICC are between 0 and 1 and express the amount of variability situated at level-2 compared to the total variability. The values of ICC close to 0 (0.05 or lower) indicate no variability between samples, and data can be disaggregated to the within-level and use a traditional single-level approach. Similarly, the values of ICC close to 1 (0.95 or higher) show no variability observed at the within-level, and data can be further aggregated to the between-level as means, medians, or percentages and use a common single-level approach at level-2.

A total of 7 non-redundant variables were observed at level-1: The values of these variables are associated with nuclei and vary within a given sample. We adopted terminology from the latent variable modelling methodology. According to this paradigm, viability is considered a latent variable (theoretical construct) reflected in mentioned seven manifest variables (empirical indicators). Thus, it is assumed that all seven variables were highly correlated. We followed the Muthén's approach [12] and decomposed the total covariance matrix to the within-level and between-level covariance matrices. Moreover, respective correlations were calculated and presented as joined covariance-correlation matrices.

Several covariate (independent) variables were considered at level-2: warm ischemia time, cold ischemia time, and dummy-coded groups. These variables didn't vary within samples and were joined to the between-level covariance matrix.

Descriptive statistics using the single-level approach are presented in Table 4 (endothelial cells). Data are expressed as means and standard errors of the mean (SEM). The last columns of both tables are the ICC values. The results indicate that there is substantial variation located at both levels; thus, both levels must be considered here. Tables 3-6 represent covariances and respective correlations. ICCs can also be calculated from these matrices using relevant variance on the diagonals.

Another view on the results gives parameter HeadDNA (%). The interval of preservation of nuclear DNA in the interval of up to 90 % [90,100], i.e., a decrease of no more than 10 % of the total amount, was

also chosen as a criterion. The ratio of non-decayed to decayed was established and it means the higher ratio, the better result.

Cryopreserved arterial grafts

The preliminary single-level analysis results are presented first for better insight into the data. Seventeen cryopreserved arterial grafts were evaluated, of which 9/8 were performed using the slow/fast thawing method. In the group of rapidly thawed samples, 351 cores were evaluated, of which 66 % were in the interval [90,100] and 34 % in the interval [0,90), i.e., with the decay of more than 90 %. The ratio of non-decayed to decayed was 1.9. In the slowly thawed group, 409 cores were evaluated, of which 74 % were in the interval [90,100] and 26 % in the interval (0,90) and the ratio of non-decayed to decayed was 2.9.

Multiorgan procurement arterial grafts

A total of 10 samples were evaluated. Five hundred

seventy-two nuclei were evaluated, of which 40 % were in the interval [90,100] and 60 % were in the interval (0,90). The ratio of non-decayed to decayed was 0.67.

Cadaveric arterial grafts

A total of 15 samples were evaluated. Three hundred eighty-seven nuclei were assessed, of which 39 % were in the interval [90,100] and 61 % were in the interval [0,90). The ratio of non-decayed to decayed nuclei was determined from the values found. This ratio for cadaveric samples was 0.63 as far as for endothelial cells.

The degree of association between independent covariate variables and manifest variable at level-2 is presented in Table 6. Significant negative correlations between dummy-coded Fast thawed cryopreserved arterial grafts and slowly thawed cryopreserved arterial grafts groups and Head radius and Head area variables indicate significantly lower Head radius and Head area values within these groups.

Table 4. Descriptive statistics, single-level, endothelial cells (35 clusters)

Variable	Fast (N=351)	Slow (N=409)	Multi (N=572)	Cadaver (N=387)	Total sample (N=1719)	ICC
<i>Tail DNA (%)</i>	29.8 (2.22)	21.9 (1.83)	35.0 (1.53)	31.9 (1.75)	30.1 (0.91)	0.436
<i>Sum intensities</i>	381.0 (40.07)	333.0 (46.25)	425.9 (14.63)	571.3 (30.60)	427.4 (16.21)	0.361
<i>Head radius</i>	14.2 (0.90)	12.4 (0.66)	19.0 (0.28)	18.7 (0.42)	16.4 (0.28)	0.277
<i>Tail length</i>	39.5 (3.70)	28.8 (2.95)	49.0 (1.84)	39.2 (1.93)	40.1 (1.29)	0.581
<i>Olive moment</i>	23.1 (2.28)	16.5 (1.80)	19.1 (1.08)	14.6 (1.02)	18.3 (0.76)	0.552
<i>Head area</i>	1135.8 (194.52)	772.0 (142.63)	1217.8 (38.61)	1233.7 (66.51)	1098.6 (55.96)	0.158
<i>Tail area</i>	3488.6 (404.80)	2236.6 (302.86)	2326.6 (105.47)	2164.1 (128.38)	2505.9 (119.20)	0.519
<i>Time of warm ischemia</i>	1.2 (0.02)	1.1 (0.02)	1.0 (0.01)	50.5 (0.96)	12.2 (0.54)	NA
<i>Time of cold ischemia</i>	14.9 (0.22)	20.5 (0.30)	25.2 (0.59)	15.8 (0.54)	19.9 (0.27)	NA

Data are expressed as mean (SEM). ICC = Intraclass Correlation Coefficient

Table 5. Within-level covariance-correlation matrix, endothelial cells

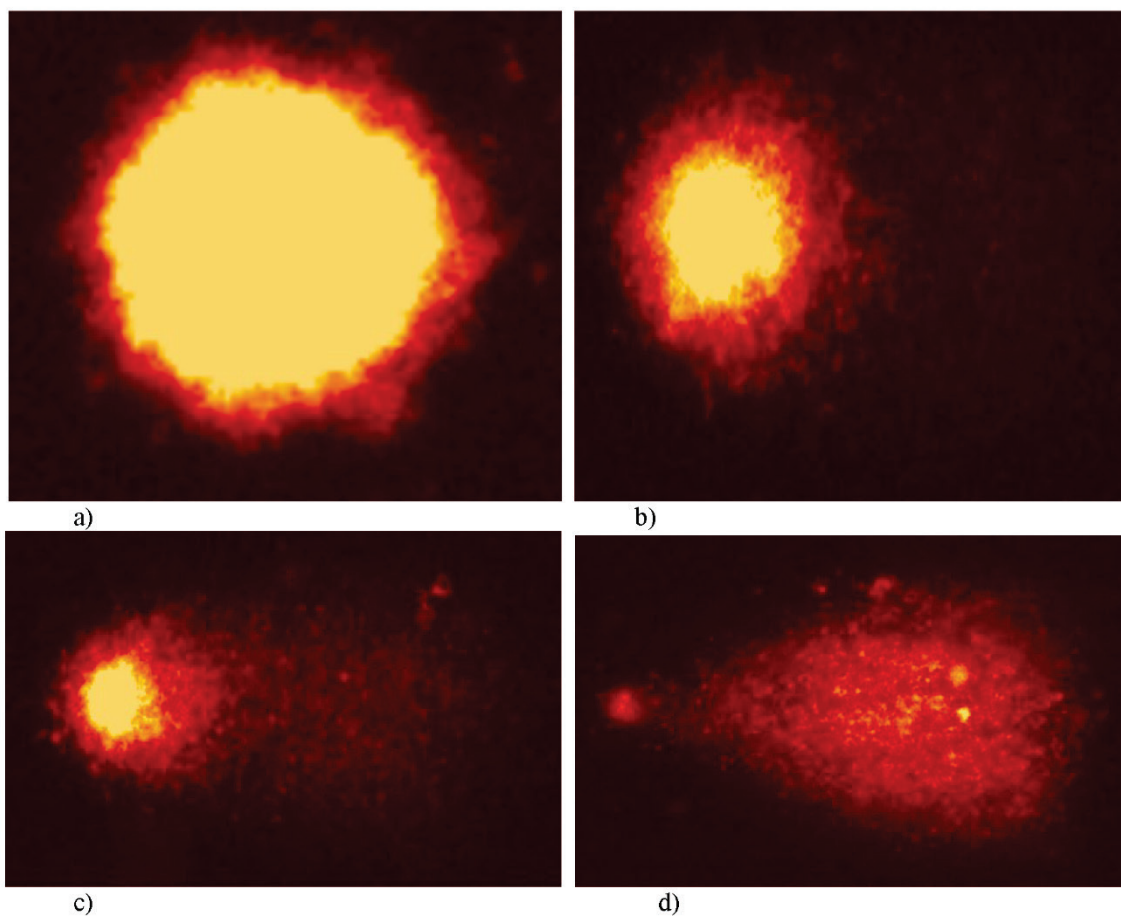
	Tail DNA	Sum int	Head radius	Tail length	Olive moment	Head area	Tail area
<i>Tail DNA (%)</i>	780.0	<i>0.29</i>	<i>-0.30</i>	<i>0.79</i>	<i>0.81</i>	<i>-0.29</i>	<i>0.60</i>
<i>Sum intensities</i>	4424.7	288482.1	<i>0.27</i>	<i>0.52</i>	<i>0.45</i>	<i>0.19</i>	<i>0.70</i>
<i>Head radius</i>	-83.9	1468.0	101.0	<i>-0.26</i>	<i>-0.33</i>	<i>0.92</i>	<i>-0.21</i>
<i>Tail length</i>	753.7	9614.7	-88.3	1168.2	<i>0.94</i>	<i>-0.32</i>	<i>0.88</i>
<i>Olive moment</i>	474.9	5130.7	-69.1	678.3	441.3	<i>-0.36</i>	<i>0.86</i>
<i>Head area</i>	-17008.9	217792.1	19698.5	-23081.0	-16107.1	4539461.2	<i>-0.30</i>
<i>Tail area</i>	57441.8	1288205.0	-7136.9	102035.2	61358.7	-2157342.0	11580227.0

Bold entries on the diagonal are within-level variances, covariances are in the lower-left triangle and respective correlations (italic) are in upper-right triangle. All correlations are significant at p<0.05 level

Table 6. Between-level covariance-correlation matrix, endothelial cells

	Tail DNA	Sum int	Head radius	Tail length	Olive moment	Head area	Tail area
<i>Tail DNA (%)</i>	603.7	<i>0.68</i>	<i>0.60</i>	<i>0.91</i>	<i>0.88</i>	<i>0.56</i>	<i>0.75</i>
<i>Sum intensities</i>	6765.8	163114.8	<i>0.87</i>	<i>0.80</i>	<i>0.78</i>	<i>0.94</i>	<i>0.88</i>
<i>Head radius</i>	92.2	2186.7	38.7	<i>0.68</i>	<i>0.58</i>	<i>0.92</i>	<i>0.69</i>
<i>Tail length</i>	896.3	13019.5	170.5	1619.7	<i>0.96</i>	<i>0.72</i>	<i>0.91</i>
<i>Olive moment</i>	504.6	7315.0	83.6	903.4	543.7	<i>0.68</i>	<i>0.94</i>
<i>Head area</i>	12619.5	348738.1	5292.5	26635.1	14677.6	851770.9	<i>0.85</i>
<i>Tail area</i>	65276.0	1254985.0	15202.8	129701.2	77362.0	2784172.0	12501433.0

Bold entries on the diagonal are within-level variances, covariances are in the lower-left triangle and respective correlations (italic) are in upper-right triangle. All correlations are significant at $p < 0.05$ level



	HeadDNA (%)	TailDNA (%)	Suma intenzit	Head radius	Tail length	Tail moment	Olive moment	Head area	Tail area
a	98.97	1.03	302.25	18.11	7.12	0.07	0.19	1043.14	128.37
b	84.72	15.28	388.73	19.1	31.41	4.8	4.27	1232.45	1281.01
c	60.1	39.6	561	20.52	56.03	22.39	14.95	1390.29	2713.67
d	2.94	97.06	1245.9	11.74	97.8	94.93	57.09	412.91	6525.75

Fig. 1. Typical shape of non-decayed nuclei (**a**) a decayed nuclei in different stage of degradation (**b**: mild, **c**: moderate, **d**: advanced).

Table 7. Correlations at level-2 between independent variables and dependent variables endothelial cells

	Fast thawed	Slow thawed	Multiorgan donors	Cadaver donors	Warm ischaemia	Cold ischaemia	Fast thawed	Slow thawed
<i>Tail DNA (%)</i>	-0.07	-0.12	0.19	-0.01	-0.05	0.06	-0.07	-0.12
<i>Sum intensities</i>	-0.13	-0.08	0.04	0.16	0.11	0.10	-0.13	-0.08
<i>Head radius</i>	-0.25	-0.27	0.33	0.16	0.12	0.14	-0.25	-0.27
<i>Tail length</i>	-0.07	-0.10	0.19	-0.03	-0.03	0.15	-0.07	-0.10
<i>Olive moment</i>	0.05	-0.01	0.06	-0.10	-0.11	0.13	0.05	-0.01
<i>Head area</i>	-0.05	-0.13	0.13	0.04	0.01	0.08	-0.05	-0.13
<i>Tail area</i>	0.08	0.00	0.00	-0.07	-0.07	0.13	0.08	0.00

Red values are significant at $p < 0.05$

On the contrary, positive correlations between the multi-group and Head radius (0.60) and Head area (0.61) reflect significantly higher values of the Head radius within the multi-group compared to other groups. The significant differences in Head radius across groups were also confirmed using the nested ANOVA omnibus test with $p < 0.05$ (results not shown).

Discussion

SCGE is used as an analytical method in various scientific fields, e.g., pharmacology, to test the effectiveness and safety of drugs, genotoxicity, and ecotoxicology. It is also used to determine time since death [13], where DNA degradation was found to be dependent on time since death. The repair of cells after the harmful effect of various external agents, e.g. from donor exposure to irradiation, and application of drugs, is commonly studied using the comet test. DNA repair after exposure to these agents is reported to occur relatively rapidly.

The result of the study confirmed the assumption that the least suitable from the point of view of DNA degradation are arterial grafts obtained from the bodies of deceased persons. At the same time, the use of grafts from multiorgan procurement is slightly better. The best results can be obtained using cryopreserved, slowly thawed grafts, probably because of the shortest warm and cold graft ischemia times achieved. It is evident that if there is no suitable recipient of graft at the time of removal during the multiorgan collection of organs, the best is to perform cryopreservation instead of keeping it, e.g., in a cardioplegic solution for a longer time.

This study is part of large project where other methods are simultaneously used on the same samples (mechanical testing, Cell Viability Assessment Using

Fluorescence Vital Dyes and Confocal Microscopy, thawing protocols test in arterial samples etc.).

However, cell viability using SCGE is rarely tested, and it needs to be well-known to what extent the cell can regenerate degraded DNA. Collins [14] states that only cells should be used for experiments with comet assay cells where DNA degradation is zero or no more than 10 % before the damage. Bankoglu *et al.* [15] states that, depending on the concentration of the agent inducing DNA degradation, the percentage of DNA in the tail of the comet increases, and non-vital cells increase, as well as the number of lost cells and apoptotic cells. Interestingly, however, after the DNA-degrading agent's removal, at least partial DNA repair occurred within a few hours. These and similar studies are performed on cell cultures by adding hydrogen peroxide, etoposide, methyl methanesulfonate, or irradiation. All these experiments use standard and well defined experimental conditions. However, no analysis has been performed on human material under different tissue preservation conditions. According to our opinion degradation of nuclear DNA monitored by comet assay on fresh peripheral blood mononuclear cell is quite fast due to autolysis. The autolysis of samples from cadavers and probably of samples from multiorgan procurement even they stay in Custodiol is main problem. The autolysis is the process which hardly can be controlled or stopped. This represents limitation of this study. In our experiment, samples of grafts were used - cryopreserved arteries, collected during multiorgan procurement and dead bodies (cadaveric), from which endothelium was isolated [16]. Both non-decayed and decayed nuclear DNA in varying degrees of decay were detected in all samples. The presence of degraded endothelial nucleus can be caused by autolytic processes, especially in cadaveric and multiorgan allografts, due to the time

between the removal of the vessel from the body to the beginning of laboratory processing (cold ischemia). It may simulate the time which elapses until the graft is implanted to the patient after its removal from the donor. The assumption is that samples where non-decayed nuclei predominate are more suitable for allograft implantation. It means the time from collection to processing of samples according the comet assay plays a valuable role.

Conclusion

Based on the results of our study, it can be concluded that the most suitable grafts for clinical use are cryopreserved grafts that have been slowly thawed. In this subgroup we can see the shortest ischaemic time of the samples. The lowest degree of endothelial damage is also associated with a lower degree of rejection after vascular graft transplantation. There is no disruption of the basement membrane and no exposure of the tunica media antigenic layer, which are powerful triggers of

rejection. In addition to the origin of the allogeneic grafts, the handling of the grafts in the period before the actual transplantation is also very important as we can see comparing groups of slowly and rapidly thawed samples.

Abbreviations

DABCO: 1,4-Diazabicyclo[2.2.2]octane; DMSO: Dimethyl sulfoxide; HBSS: Hank's Balanced Solution with calcium, with magnesium without phenol red; LMA: low gelling agarose; NMA: normal melting agarose; PN: product number; PBS: phosphate buffer solution; SDS: sodium dodecyl sulphate.

Conflict of Interest

There is no conflict of interest.

Acknowledgements

This article was supported by the Ministry of Health of the Czech Republic (MH CZ-DRO, General University Hospital in Prague—VFN, 00064165).

References

1. Špaček M, Měříčka P, Janoušek L, Štádler P, Adamec M, Vlachovský R, Guňka I, Navrátil P, Thieme F, Špunda R, Burkert J, Staffa R, Němec P, Lindner J. Current vascular allograft procurement, cryopreservation and transplantation techniques in the Czech Republic. *Adv Clin Exp Med.* 2019;28:529-534. <https://doi.org/10.17219/acem/90037>
2. Špaček M, Měříčka P, Janoušek L, Štádler P, Adamec M, Vlachovský R, Guňka I, Navrátil P, Thieme F, Mitáš P, Špunda R, Špatenka J, Staffa R, Němec P, Lindner J. Organization model for allotransplantations of cryopreserved vascular grafts in Czech Republic. *Cell Tissue Bank.* 2018;19:437-445. <https://doi.org/10.1007/s10561-018-9691-4>
3. Měříčka P, Janoušek L, Benda A, Lainková R, Sabó J, Dalecká M, Prokšová P, Salmay M, Špunda R, Pecha O, Jandová M, Gregor J, Štěrba L, Špaček M, Lindner J. Cell viability assessment using fluorescence vital dyes and confocal microscopy in evaluating freezing and thawing protocols used in cryopreservation of allogeneic venous grafts. *Int J Mol Sci.* 2021;22:10653. <https://doi.org/10.3390/ijms221910653>
4. Špunda R, Hrubý J, Měříčka P, Mlček M, Pecha O, Splith K, Schmelzle M, Krenzien F, Lindner J, Matia I, Spacek M. Immunosuppressive protocols with tacrolimus after cryopreserved aortal allotransplantation in rats. *PLoS One.* 2018;13:e0201984. <https://doi.org/10.1371/journal.pone.0201984>
5. Hrubý J, Špunda R, Měříčka P, Mlček M, Pecha O, Splith K, Schmelzle M, Krenzien F, Lindner J, Špaček M, Matia I. Influence of the new standardized clinical cryopreservation/slow thawing protocol on immunogenicity of arterial allografts in rats. *PLoS One.* 2020;15:e0230234. <https://doi.org/10.1371/journal.pone.0230234>
6. Singh NP, McCoy MT, Ticce RR, Schneider EL. A simple technique for the quantitation of low levels of DNA damage in individual cells. *Experimental Cell Research.* 1988;175:184-191. [https://doi.org/10.1016/0014-4827\(88\)90265-0](https://doi.org/10.1016/0014-4827(88)90265-0)
7. Kumaravel T, Vilhar B, Faux S, Jha A. Comet Assay measurements: a perspective. *Cell Biology and Toxicology* 2009, 25:53-56. <https://doi.org/10.1007/s10565-007-9043-9>
8. Nandhakumar S, Parasuraman S, Shanmugam M, Ramachandra Rao K, et al. Evaluation of DNA damage using single-cell gel electrophoresis (Comet Assay). *J Pharmacol Pharmacotherapeut,* 2011, 2:107-111. <http://doi.org/10.4103/0976-500X.81903>

-
9. Møller P, Azqueta A, Boutet-Robinet E, Koppen G, Bonassi S, Milič M, et al. Minimum Information for Reporting on the Comet Assay (MIRCA): recommendations for describing comet assay procedures and results. *Nat Protoc.* 2020;15:3817-3826. <https://doi.org/10.1038/s41596-020-0398-1>
 10. StataCorp. 2019. *Stata Statistical Software: Release 16*. College Station, TX: StataCorp LLC.
 11. Rosseel Y, Lavaan. An R Package for Structural Equation Modeling. *Journal of Statistical Software.* 2012;48,1-36. <https://doi.org/10.18637/jss.v048.i02>
 12. Muthén B. Multilevel covariance structure analysis. J. Hox & I. Kreft (eds.). In: *Multilevel Modeling, a special issue of Sociological Methods & Research.* 1994;22,376-398. <https://doi.org/10.1177/0049124194022003006>
 13. Johnson LA, Ferris JA. Analysis of postmortem DNA degradation by single-cell gel electrophoresis. *Forensic Sci. International.* 2002;126:43-47. [https://doi.org/10.1016/S0379-0738\(02\)00027-0](https://doi.org/10.1016/S0379-0738(02)00027-0)
 14. Collins A.R. The comet assay for DNA damage and repair. Principles, applications, and limitations. *Mol Biotechnol* 2004;26:249-261. <https://doi.org/10.1385/MB:26:3:249>
 15. Bankoglu, E.E., Schuele, C. & Stopper, H. Cell survival after DNA damage in the comet assay. *Arch Toxicol.* 2021; 95,3803-3813. <https://doi.org/10.1007/s00204-021-03164-3>
 16. Špaček M, Měříčka P, Janoušek L, Dalecká M, Benda A, Krs O, Slížová D, Špunda R, Hrubý J, Matia I, Honegrová B, Lindner J. Comparison of different thawing protocols in human cryopreserved venous grafts. *Ann Vasc Surg.* 2020;64:347-354. <https://doi.org/10.1016/j.avsg.2019.11.026>
-